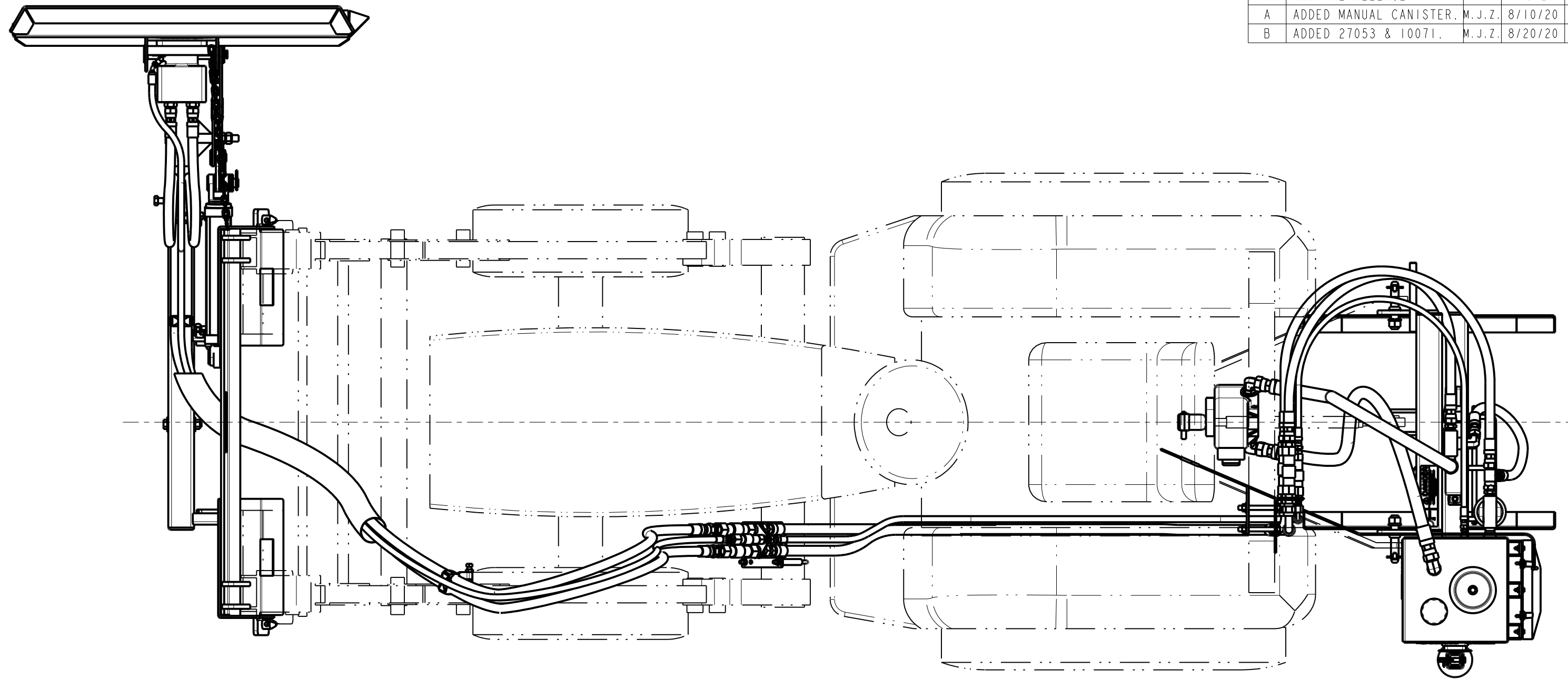


DWG. NO.	27000			REV.	B
REV	CHANGE	BY	DATE	ECN	
IR	INITIAL RELEASE	C.K.N.	6/8/20	1759	
A	ADDED MANUAL CANISTER.	M.J.Z.	8/10/20	1776	
B	ADDED 27053 & 10071.	M.J.Z.	8/20/20	1777	



KUBOTA L2501 CONFIGURATION

- SHEET 2 - KUBOTA B.O.M. & FRONT END COMPONENTS
- SHEET 3 - KUBOTA FRONT & REAR VIEWS
- SHEET 4 - KUBOTA SIDE VIEW
- SHEET 5 - VARIOUS KUBOTA VIEWS
- SHEET 6 - JOHN DEERE CONFIGURATION - TOP VIEW
- SHEET 7 - J.DEERE B.O.M. & FRONT END COMPONENTS

- SHEET 8 - J.DEERE FRONT & REAR VIEWS
- SHEET 9 - JOHN DEERE SIDE VIEW
- SHEET 10 - VARIOUS JOHN DEERE VIEWS
- SHEET 11 - SHIPPING ARRANGEMENT

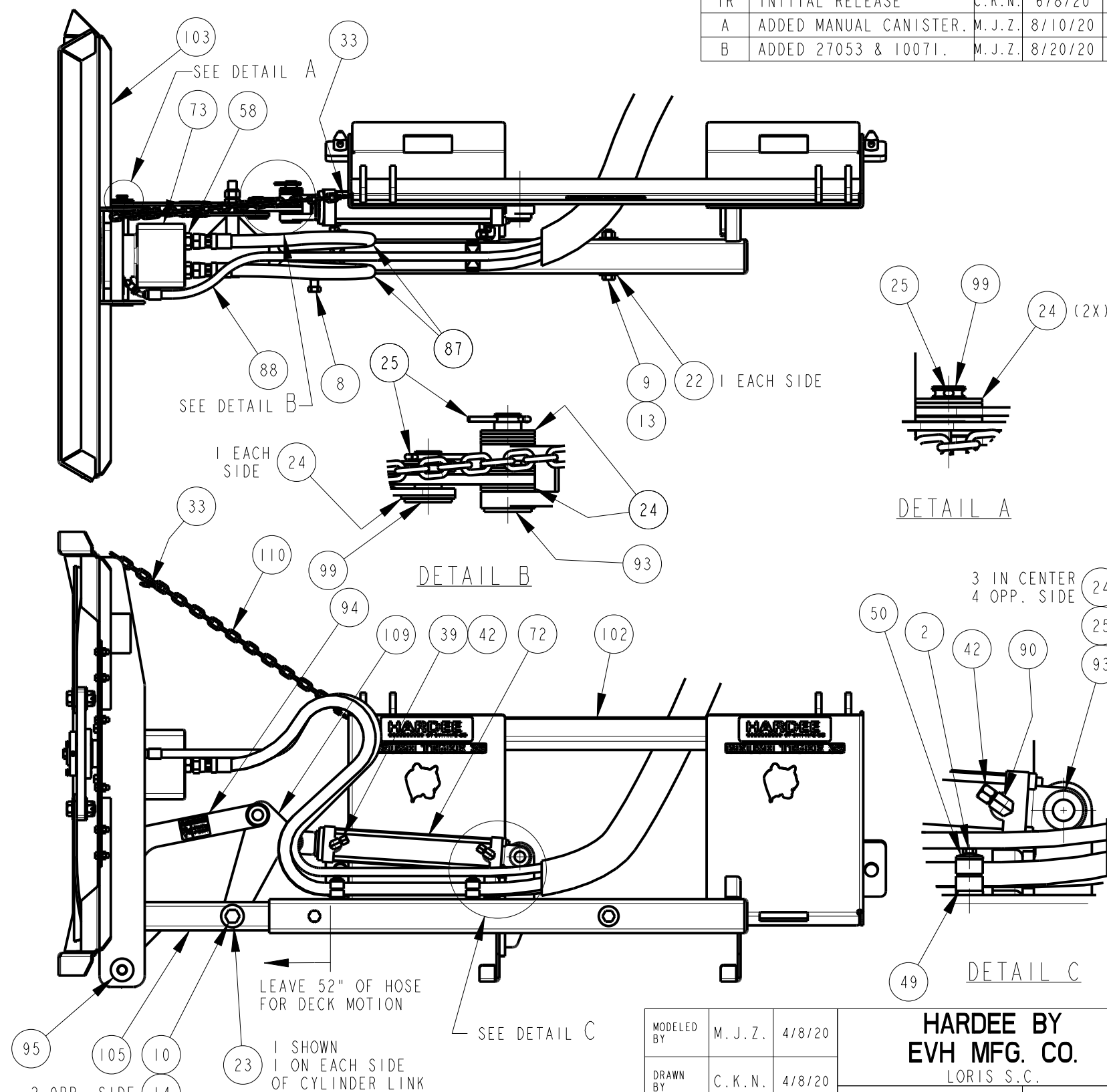
All Dimensions in Inches Unless Otherwise Specified
 Dimensions in [] are in Millimeters
 Tolerance Unless Otherwise Specified
 Fractional Dimensions: 1/16" Angular Dimensions: 1°
 Decimal Dim. to Limits Shown All Holes to be +0 -1/32"

MODELED BY	M. J. Z.	4/8/20	HARDEE BY EVH MFG. CO. LORIS S.C.	
CHECKED BY	C. K. N.	4/24/20		
MATERIAL	R.M.N. N/A		DESCRIPTION	SHEET 1 of 11
Manufactured By: EVH Mfg. Co., LLC			BRUSH TIGER - 35, COMPLETE	
DO NOT SCALE	B	DWG. NO.	27000	

Item	Part Number	Qty.	Description	54	15853	2	YELLOW REFLECTOR DECAL
				55	15860	6	U-NUT, 1/4"-20
1	10002	12	Hex Bolt, 1/4"-20 X 1" Gr.5 PLATED	56	15910	46	HOSE SLEEVE
2	10014	3	Hex Bolt 5/16" X 2-1/4" gr.5 Plated	57	16011	1	Fitting, 12 R6X-S Swivel Nut Run Tee
3	10029	2	Hex Bolt 3/8"-16 x 1-1/4 gr.5 plated	58	16012	6	Fitting, 12 F50X-S Strt. Thread Conn.
4	10031	2	Hex Bolt 3/8" X 1" GRADE 5 PLATED	59	16191	1	16-M-JIC X 16-M-NPT 90 Deg. Elbow
5	10071	2	Hex Bolt, 1/2" X 1" GR.5 PLATED	60	16395	2	BULKHEAD 1/2" M-JIC w/LOCKNUT
6	10077	1	HEX BOLT 1/2" X 4" GR.5 PLATED	61	16449	1	HOSE ASSY, 1"- TANK TO PUMP
7	10078	2	1/2 X 4 1/2 Hex Bolt (Gr.5 Plated)	62	16450	1	HOSE ASSY, 3/4", PUMP TO REL. VALVE
8	10091	1	Hex Bolt 5/8" X 1-1/2" GR.5 PLATED	63	16451	1	HOSE ASSY, 3/4", FILTER TO R. VALVE
9	10096	1	Hex Bolt 5/8"-11 X 4" Gr.5 PLATED	64	16460	1	OD BUSHING, 1-1/4" - MITI MIKE
10	10121	1	Hex Bolt 3/4" X 8" Gr.5 PLATED	65	16463	1	HYDRAULIC PUMP - MITI MIKE
11	10153	8	Lock Nut, 1/4" Plated	66	16467	1	FILTER KIT-M.MIKE(16469 FIL.REPLACE)
12	10162	2	3/8" Hex Nut (Gr.5 Plated)	67	16562	1	FAN FOR HYDRAULIC OIL TANK-MITI MIKE
13	10166	1	LOCK NUT, 5/8"-11 PLATED	68	16565	1	4-M-NPT X 6-M-JIC 45 DEG ELBOW
14	10168	2	3/4"-10 Locknut (Gr.5 Plated)	69	16566	1	4-M-NPT X 6-M-JIC (STRAIGHT)
15	10175	6	3/8"-16 Locknut (Gr.5 Plated)	70	16569	1	WIRING HARNESS, FAN
16	10176	7	1/2" Locknut (Gr.5 Plated)	71	16652	1	PTO ADAPTER
17	10182	4	Lockwasher 3/8 plated	72	16752	1	2-1/2" Cylinder (20-1/4" to 30-1/4")
18	10184	4	Lockwasher 1/2 plated	73	16861	1	MOTOR - MITI MIKE
19	10200	16	1/4" Plated Flatwasher	74	16894	2	CLAMP, 5" U-BOLT W/GUILLOTINE
20	10202	12	3/8" Flatwasher (Plated)	75	16896	4	COUPLER, #12, FLUSHFACE FEMALE THD.
21	10204	6	1/2 USS Flatwasher (Plated)	76	16897	4	NIPPLE, #12, FLUSHFACE FEMALE THD.
22	10205	2	5/8" Flatwasher (Plated)	77	16898	2	COUPLER, #8, FLUSHFACE FEMALE THREAD
23	10206	7	FLATWASHER, 3/4" PLATED	78	16899	2	NIPPLE, #8, FLUSHFACE FEMALE THREAD
24	10207	21	FLATWASHER, 1" PLATED	79	16900	2	O-RING, #8 (.644 I.D. X .087)
25	10252	5	Cotter Pin 3/16" X 2" Plated	80	16901	4	O-RING, #12 (.924 I.D. X .116)
26	10307	2	CATEGORY I HITCH PIN	81	16902	1	HOSE ASSY, 3/4",.52", COUPLER TO TANK
27	10339	2	POP RIVET	82	16903	1	HOSE ASSY, 3/4",.47", R. VALVE TO TANK
28	10346	2	3 pt. Snap Pin (Lynch Pin)	83	16904	1	HOSE ASSY, 3/8",.60", COUPLER TO TANK
29	10375	1	RELIEF VALVE	84	16905	1	HOSE ASSY, 3/4",.85", BLKHD TO BLKHD
30	10390	4	Clip Pin (1/8 x 2)	85	16906	1	HOSE ASSY, 3/4",.80", BLKHD TO BLKHD
31	10393	3	UNIVERSAL CLIP PIN	86	16907	1	HOSE ASSY, 3/8",.80", BLKHD TO BLKHD
32	10501	1	FLOW EZY BREATHER	87	16909	2	HOSE ASSY, 3/4",.201", FRONT P. & RET.
33	10841	3	QUICK LINK, 3/16' SCREW	88	16910	1	HOSE ASSY, 3/8",.209", FRONT C. DRAIN
34	11001	1	Decal, Danger - Rotating Blades	89	16911	4	BULKHEAD, 3/4" M-JIC W/LOCKNUT
35	11002	1	Decal, Danger - Keep Clear	90	16914	1	6-M-NPT X 6-M-JIC 90 EL W/.047 REST.
36	11005	1	Decal, Warning - Thrown Objects	91	16915	3	DECAL, SMALL HARDEE LOGO
37	11032	4	DECAL, SMALL HARDEE LOGO	92	16916	3	DECAL, SMALL HARDEE LOGO
38	11727	1	SERIAL NUMBER PLATE	93	25724	2	WELDMENT, CYLINDER PIN
39	11872	1	6-M-NPT X 6-M-JIC 90 Deg. Elbow	94	26890	1	WELDMENT- DECK LINK
40	13675	1	3/4" NPT X 3" METAL NIPPLE	95	26903	1	WELDMENT - PIN - MITI MIKE
41	13717	1	1" NPT THREADED COUPLING	96	26925	1	OIL TANK WELDMENT - MITI MIKE
42	13899	2	#6 JIC CAP	97	26931	1	BLADE HOLDER ASSEMBLY, MITI MIKE
43	13974	1	16-M-JIC X 16-M-NPT 90 Deg. Elbow	98	26932	2	WELDMENT- STAND - MITI MIKE
44	13975	1	12-M-ORB X 12-M-JIC 90 Deg. Elbow	99	26944	2	WELDMENT - PIN - MITI MIKE
45	13976	2	12-M-JIC X 12-M-NPT 90 Deg. Elbow	100	26948	1	WELDMENT - Flat, Pump Stabilizer
46	13978	2	STRAIGHT, 12-M-JIC X 12-M-NPT	101	26954	1	PLATE - FAN MOUNT/SHROUD
47	13981	2	8-M-ORB X 8-M-JIC Straight	102	27010	1	BRUSH TIGER FRONT MOUNT - SS QA
48	15256	2	Hex Bolt, 1/4" X 2-3/8" Gr.5 Plated	103	27011	1	DECK WELDMENT - BRUSH TIGER
49	15292	3	3/4" HOSE CLAMP BODY, TWIN	104	27012	1	HITCH FRAME WELDMENT - BRUSH TIGER
50	15293	3	Cover Plate - Twin, Group 2	105	27013	1	EXTENSION ARM WELDMENT - BRUSH TIGER
51	15465	2	Tubing Insert, 3" Sqr. X 5-8 Gage	106	27029	1	BLADE SHIELD, BRUSH TIGER
52	15845	1	DECAL KIT, HYDRAULIC	107	27030	1	TEE WELDMENT, STABILIZING FOOT - BT
53	15852	2	RED REFLECTOR DECAL				

[TABLE CONTINUED ON SHEET 3]

DWG. NO.	27000	REV.	B	
REV	CHANGE	BY	DATE	ECN
IR	INITIAL RELEASE	C.K.N.	6/8/20	1759
A	ADDED MANUAL CANISTER.	M.J.Z.	8/10/20	1776
B	ADDED 27053 & 10071.	M.J.Z.	8/20/20	1777

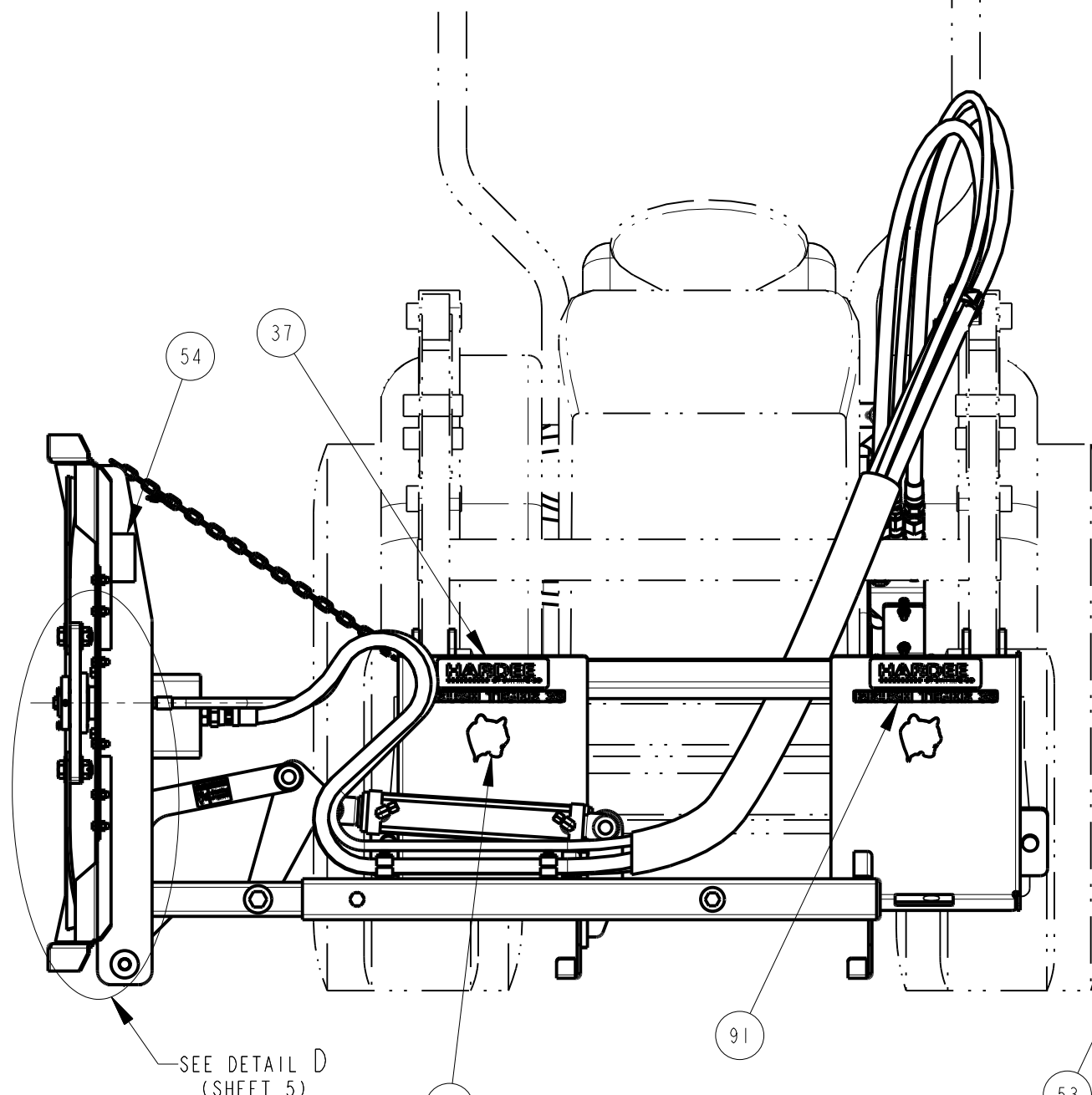


All Dimensions in Inches Unless Otherwise Specified
 Dimensions in [] are in Millimeters
 Tolerance Unless Otherwise Specified
 Fractional Dimensions ± 1/16" Angular Dimensions ± 1°
 Decimal Dim. to Limits Shown All Holes to be +0 -1/32"

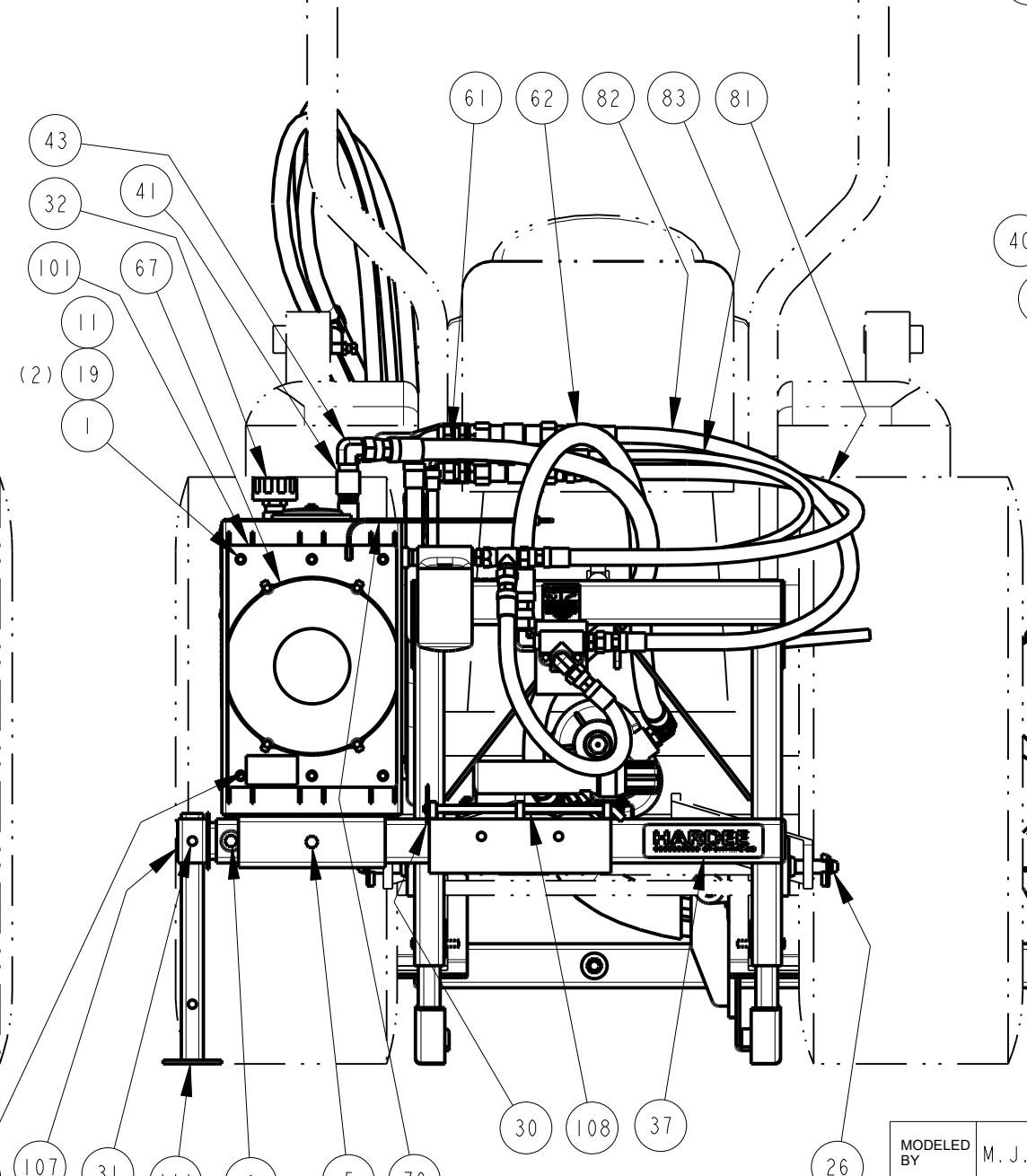
MODELED BY	M.J.Z.	4/8/20	HARDEE BY EVH MFG. CO. LORIS S.C.	
DRAWN BY	C.K.N.	4/8/20		
MATERIAL	R.M.N. N/A		DESCRIPTION	SHEET 2 of 11
Manufactured By:	EVH Mfg. Co., LLC		BRUSH TIGER - 35, COMPLETE	
DO NOT SCALE	B DWG SIZE	DWG. NO.	27000	

108	27035	1	ROD, WEIGHT RETAINING - BRUSH TIGER
109	27037	1	LINK, CYLINDER - SKID STEER QA - BT
110	27038	1	CHAIN, SHIPPING (30"LEN.)-B.TIGER
111	27040	1	STAND WELDMENT, STABILIZING FOOT-BT
112	27042	1	CLAMP WELDMENT, HOSE, LEFT - B.TIGER
113	27043	1	BRACKET, HOSE SUPPORT - BRUSH TIGER
114	27044	2	BRACKET, BULKHEAD SUPPORT - B.TIGER
115	27045	1	CLAMP PLATE, BULKHEAD SUPPORT - BT
116	27053	1	BLADE WASHER - BRUSH TIGER
117	15845-2	1	DANGER DECAL (KIT 15845)

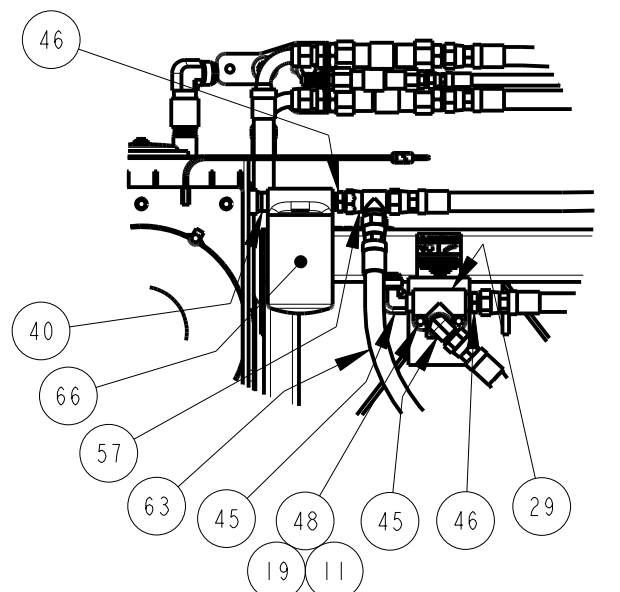
DWG. NO.	27000	REV.	B	
REV	CHANGE	BY	DATE	ECN
IR	INITIAL RELEASE	C.K.N.	6/8/20	1759
A	ADDED MANUAL CANISTER.	M.J.Z.	8/10/20	1776
B	ADDED 27053 & 10071.	M.J.Z.	8/20/20	1777



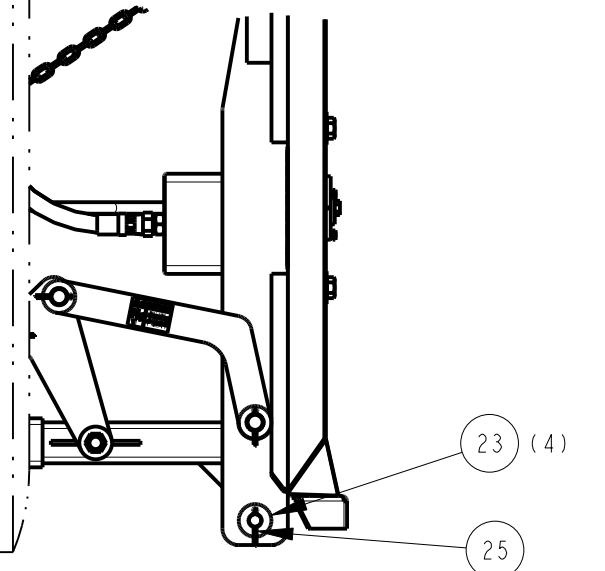
KUBOTA FRONT VIEW



KUBOTA REAR VIEW



REAR COMPONENTS DETAIL
(2 PUMP HOSES NOT SHOWN)



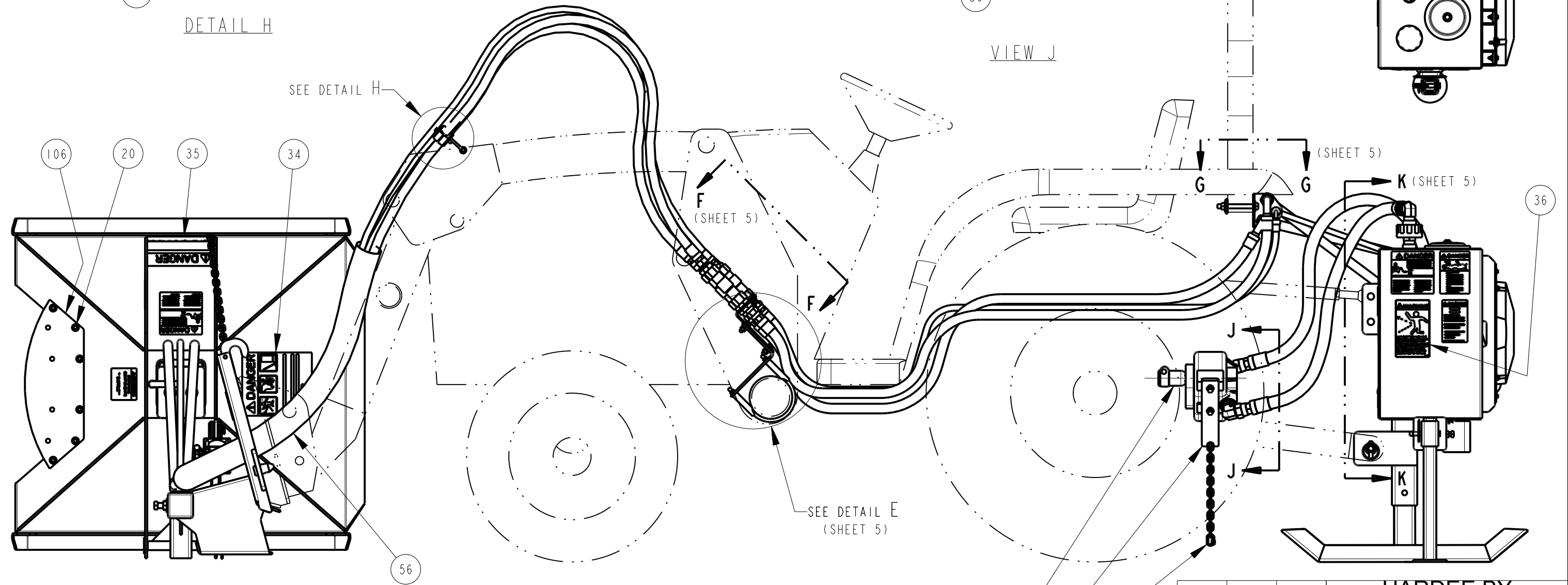
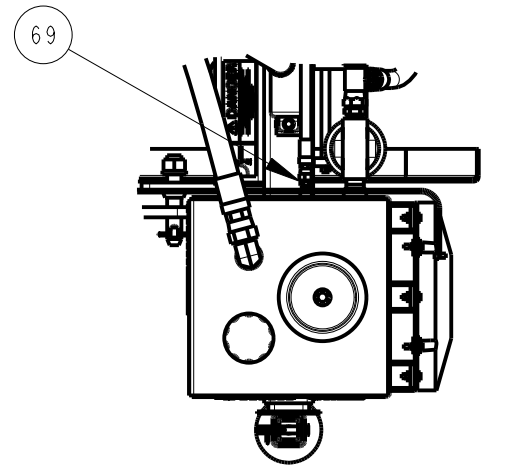
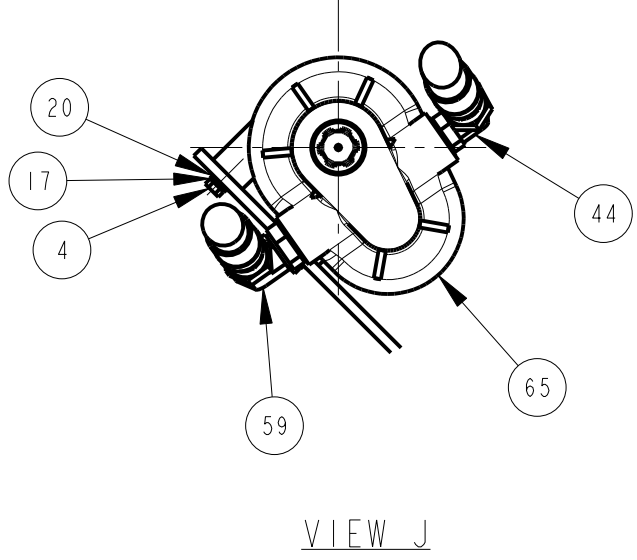
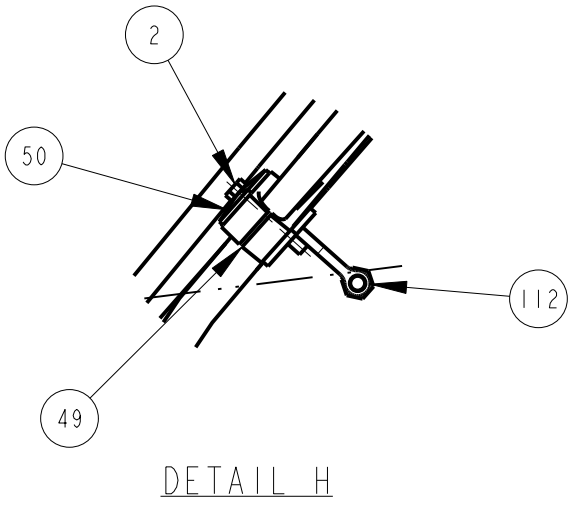
SEE DETAIL D
(SHEET 5)

All Dimensions in Inches Unless Otherwise Specified
Dimensions in [] are in Millimeters
Tolerance Unless Otherwise Specified
Fractional Dimensions: 1/16"
Decimal Dim. to Limits Shown
Angular Dimensions: 1°
All Holes to be +0 -1/32"

MODELED BY	M. J. Z.	4/8/20
CHECKED BY	C. K. N.	4/24/20
MATERIAL	R.M.N.	N/A
Manufactured By: EVH Mfg. Co., LLC		

HARDEE BY EVH MFG. CO. LORIS S.C.	
DESCRIPTION	SHEET 3 of 11
BRUSH TIGER - 35, COMPLETE	
DO NOT SCALE	B DWG. NO. 27000

DWG. NO.	27000			REV.	B
REV	CHANGE	BY	DATE	ECN	
IR	INITIAL RELEASE	C.K.N.	6/8/20	1759	
A	ADDED MANUAL CANISTER.	M.J.Z.	8/10/20	1776	
B	ADDED 27053 & 10071.	M.J.Z.	8/20/20	1777	



All Dimensions in Inches Unless Otherwise Specified
 Dimensions in [] are in Millimeters
 Tolerance Unless Otherwise Specified
 Fractional Dimensions: 1/16" Angular Dimensions: 1°
 Decimal Dim. to Limits Shown All Holes to be +0 -1/32"

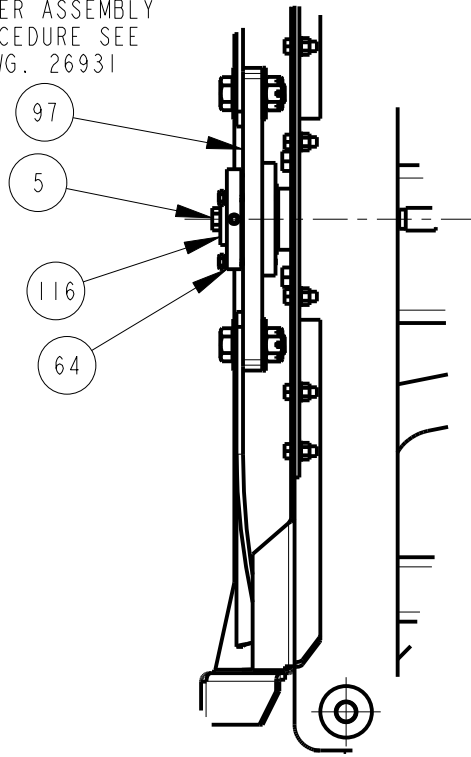
MODELED BY	M. J. Z.	4/8/20
CHECKED BY	C. K. N.	4/24/20

MATERIAL	R.M.N.
	N/A

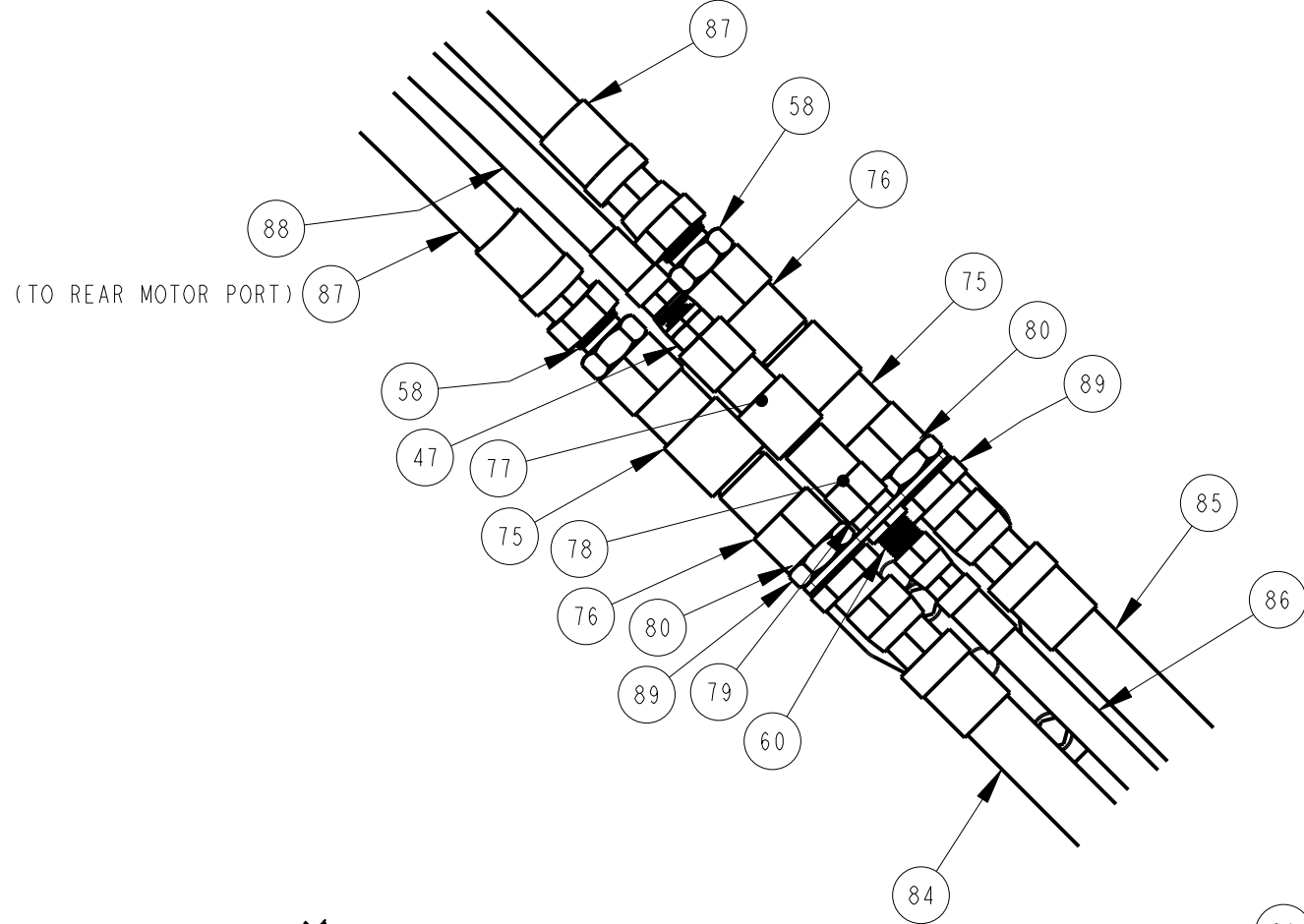
Manufactured By:
 EVH Mfg. Co., LLC

HARDEE BY EVH MFG. CO. LORIS S.C.	
DESCRIPTION	SHEET 4 of 11
BRUSH TIGER - 35, COMPLETE	
DO NOT SCALE	B DWG. NO. 27000

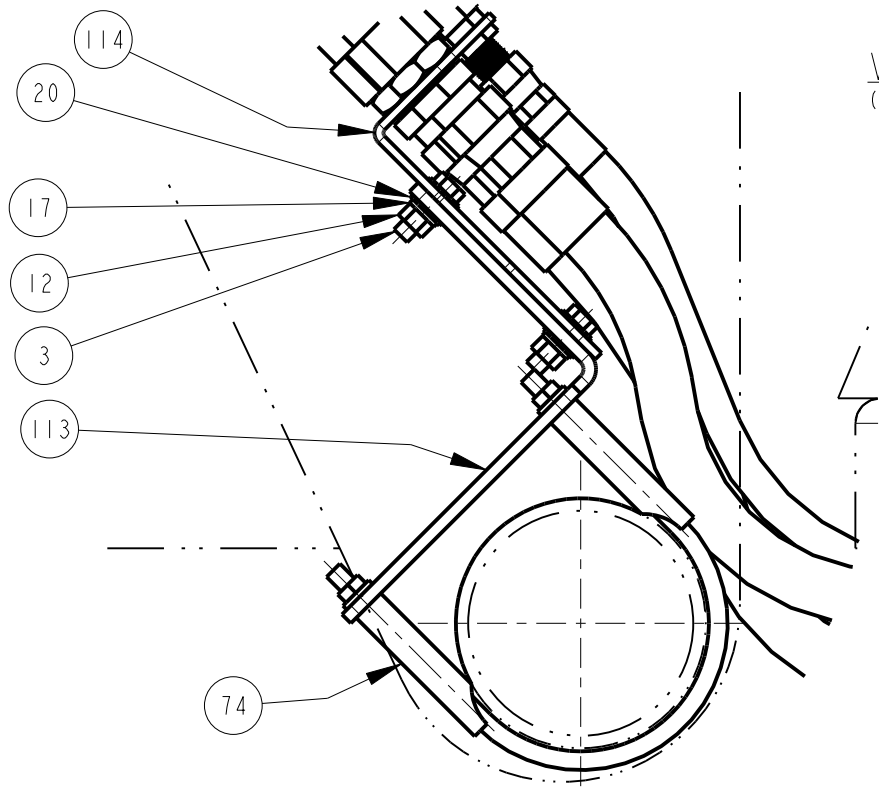
FOR BLADE
HOLDER ASSEMBLY
PROCEDURE SEE
DWG. 26931



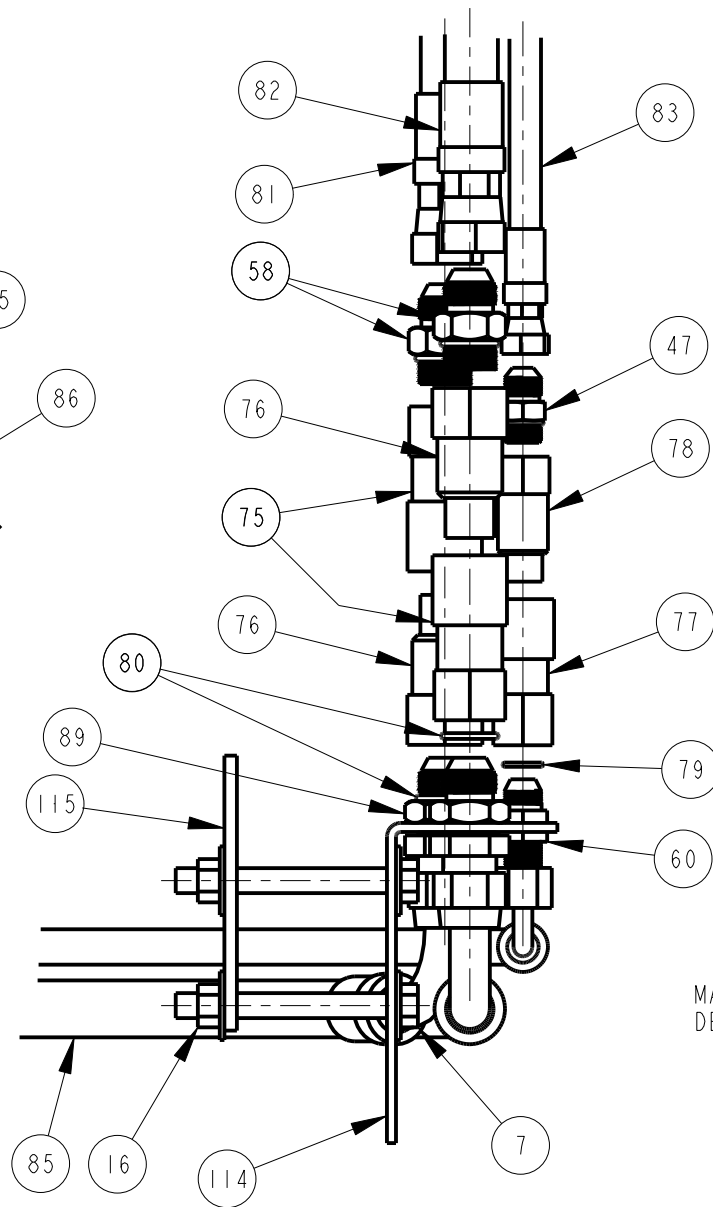
DETAIL D
(SHEET 3)



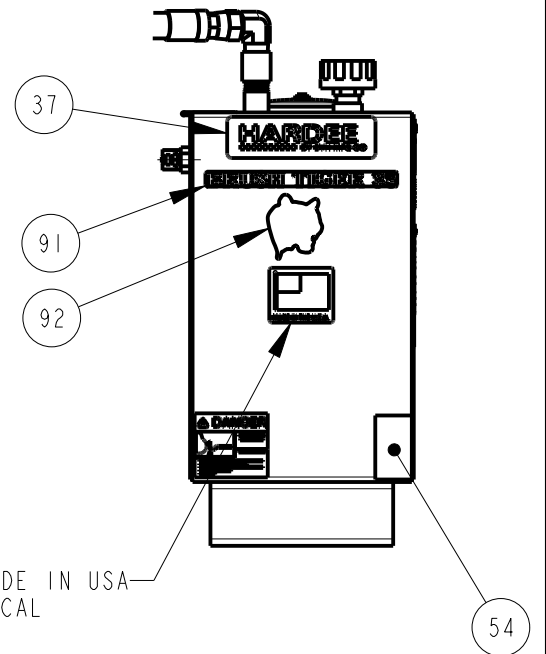
VIEW F
(SHEET 4)



DETAIL E
(SHEET 4)



VIEW G
(SHEET 4)



VIEW K
(SHEET 4)

DWG. NO.	27000		REV. B	
REV	CHANGE	BY	DATE	ECN
IR	INITIAL RELEASE	C.K.N.	6/8/20	1759
A	ADDED MANUAL CANISTER.	M.J.Z.	8/10/20	1776
B	ADDED 27053 & 10071.	M.J.Z.	8/20/20	1777

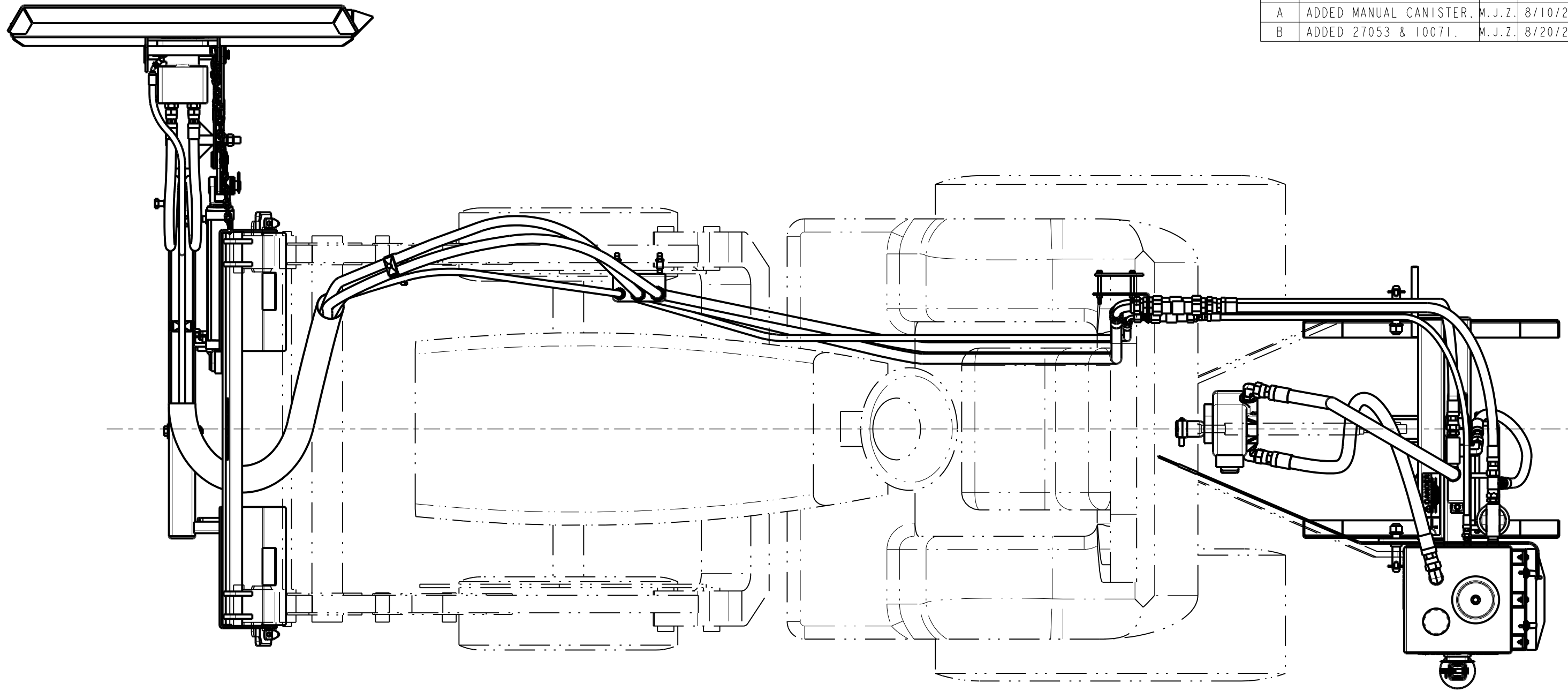
MADE IN USA
DECAL

All Dimensions in Inches Unless Otherwise Specified
Dimensions in [] are in Millimeters
Tolerance Unless Otherwise Specified
Fractional Dimensions: 1/16"
Decimal Dim. to Limits Shown
Angular Dimensions: 1°
All Holes to be +0 -1/32"

MODELED BY	M. J. Z.	4/8/20
CHECKED BY	C. K. N.	4/24/20
MATERIAL	R.M.N.	N/A
Manufactured By: EVH Mfg. Co., LLC		

HARDEE BY EVH MFG. CO. LORIS S.C.	
DESCRIPTION	SHEET 5 of 11
BRUSH TIGER - 35, COMPLETE	
DO NOT SCALE	B DWG. NO. 27000

DWG. NO.	27000			REV.	B
REV	CHANGE	BY	DATE	ECN	
IR	INITIAL RELEASE	C.K.N.	6/8/20	1759	
A	ADDED MANUAL CANISTER.	M.J.Z.	8/10/20	1776	
B	ADDED 27053 & 10071.	M.J.Z.	8/20/20	1777	



JOHN DEERE 3025E CONFIGURATION
(DECAL LOCATIONS SAME AS KUBOTA)

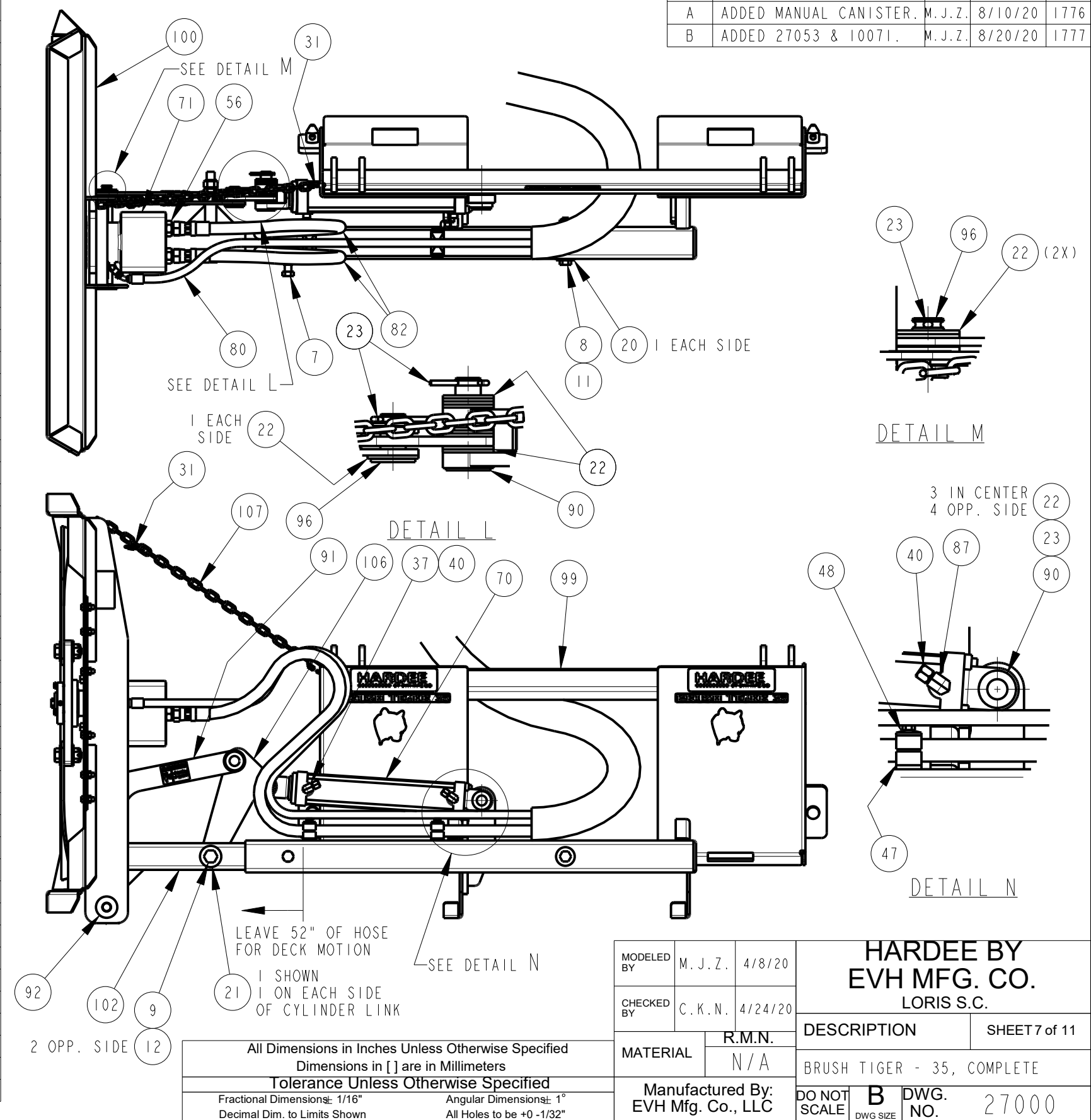
All Dimensions in Inches Unless Otherwise Specified
Dimensions in [] are in Millimeters
Tolerance Unless Otherwise Specified
Fractional Dimensions: 1/16" Angular Dimensions: 1°
Decimal Dim. to Limits Shown All Holes to be +0 -1/32"

MODELED BY	M. J. Z.	4/8/20	HARDEE BY EVH MFG. CO. LORIS S.C.	
CHECKED BY	C. K. N.	4/24/20		
MATERIAL	R.M.N.	N/A	DESCRIPTION	SHEET 6 of 11
Manufactured By: EVH Mfg. Co., LLC			BRUSH TIGER - 35, COMPLETE	
DO NOT SCALE	B	DWG. NO.	27000	
	DWG SIZE			

Item	Part Number	Qty.	Description	54	15910	46	HOSE SLEEVE
				55	16011	1	Fitting, 12 R6X-S Swivel Nut Run Tee
1	10002	12	Hex Bolt, 1/4"-20 X 1" Gr.5 PLATED	56	16012	6	Fitting, 12 F50X-S Strt. Thread Conn.
2	10014	3	Hex Bolt 5/16" X 2-1/4" gr.5 Plated	57	16191	1	16-M-JIC X 16-M-NPT 90 Deg. Elbow
3	10031	2	Hex Bolt 3/8" X 1" GRADE 5 PLATED	58	16395	2	BULKHEAD 1/2" M-JIC w/LOCKNUT
4	10036	2	HEX BOLT 3/8" X 3-1/2" GR.5 PLATED	59	16449	1	HOSE ASSY, 1"- TANK TO PUMP
5	10071	2	Hex Bolt, 1/2" X 1" GR.5 PLATED	60	16450	1	HOSE ASSY, 3/4", PUMP TO REL. VALVE
6	10077	1	HEX BOLT 1/2" X 4" GR.5 PLATED	61	16451	1	HOSE ASSY, 3/4", FILTER TO R. VALVE
7	10091	1	Hex Bolt 5/8" X 1-1/2" GR.5 PLATED	62	16460	1	QD BUSHING, 1-1/4" - MITI MIKE
8	10096	1	Hex Bolt 5/8"-11 X 4" Gr.5 PLATED	63	16463	1	HYDRAULIC PUMP - MITI MIKE
9	10121	1	Hex Bolt 3/4" X 8" Gr.5 PLATED	64	16467	1	FILTER KIT-M.MIKE(16469 FIL.REPLACE)
10	10153	8	Lock Nut, 1/4" Plated	65	16562	1	FAN FOR HYDRAULIC OIL TANK-MITI MIKE
11	10166	1	LOCK NUT, 5/8"-11 PLATED	66	16565	1	4-M-NPT X 6-M-JIC 45 DEG ELBOW
12	10168	2	3/4"-10 Locknut (Gr.5 Plated)	67	16566	1	4-M-NPT X 6-M-JIC (STRAIGHT)
13	10175	8	3/8"-16 Locknut (Gr.5 Plated)	68	16569	1	WIRING HARNESS, FAN
14	10176	5	1/2" Locknut (Gr.5 Plated)	69	16652	1	PTO ADAPTER
15	10182	2	Lockwasher 3/8 plated	70	16752	1	2-1/2" Cylinder (20-1/4" to 30-1/4")
16	10184	4	Lockwasher 1/2 plated	71	16861	1	MOTOR - MITI MIKE
17	10200	16	1/4" Plated Flatwasher	72	16892	2	C-CLAMP W/ LOCKNUT, HOSE SUPPORT
18	10202	12	3/8" Flatwasher (Plated)	73	16896	4	COUPLER, #12, FLUSHFACE FEMALE THD.
19	10204	2	1/2 USS Flatwasher (Plated)	74	16897	4	NIPPLE, #12, FLUSHFACE FEMALE THD.
20	10205	2	5/8" Flatwasher (Plated)	75	16898	2	COUPLER, #8, FLUSHFACE FEMALE THREAD
21	10206	7	FLATWASHER, 3/4" PLATED	76	16899	2	NIPPLE, #8, FLUSHFACE FEMALE THREAD
22	10207	20	FLATWASHER, 1" PLATED	77	16900	2	O-RING, #8 (.644 I.D. X .087)
23	10252	5	Cotter Pin 3/16" X 2" Plated	78	16901	4	O-RING, #12 (.924 I.D. X .116)
24	10307	2	CATEGORY I HITCH PIN	79	16902	1	HOSE ASSY, 3/4",.52", COUPLER TO TANK
25	10339	2	POP RIVET	80	16903	1	HOSE ASSY, 3/4",.47", R. VALVE TO TANK
26	10346	2	3 pt. Snap Pin (Lynch Pin)	81	16904	1	HOSE ASSY, 3/8",.60", COUPLER TO TANK
27	10375	1	RELIEF VALVE	82	16909	2	HOSE ASSY, 3/4",.201", FRONT P.& RET.
28	10390	4	Clip Pin (1/8 x 2)	83	16910	1	HOSE ASSY, 3/8",.209", FRONT C. DRAIN
29	10393	3	UNIVERSAL CLIP PIN	84	16911	4	BULKHEAD, 3/4" M-JIC W/LOCKNUT
30	10501	1	FLOW EZY BREATHER	85	16912	2	HOSE ASM, 3/4", 101", BLKHD TO BLKHD
31	10841	3	QUICK LINK, 3/16" SCREW	86	16913	1	HOSE ASSY, 3/8", 80", BLKHD TO BLKHD
32	11001	1	Decal, Danger - Rotating Blades	87	16914	1	6-M-NPT X 6-M-JIC 90 EL W/.047 REST.
33	11002	1	Decal, Danger - Keep Clear	88	16915	3	DECAL, SMALL HARDEE LOGO
34	11005	1	Decal, Warning - Thrown Objects	89	16916	3	DECAL, SMALL HARDEE LOGO
35	11032	4	DECAL, SMALL HARDEE LOGO	90	25724	2	WELDMENT, CYLINDER PIN
36	11727	1	SERIAL NUMBER PLATE	91	26890	1	WELDMENT- DECK LINK
37	11872	1	6-M-NPT X 6-M-JIC 90 Deg. Elbow	92	26903	1	WELDMENT - PIN - MITI MIKE
38	13675	1	3/4" NPT X 3" METAL NIPPLE	93	26925	1	OIL TANK WELDMENT - MITI MIKE
39	13717	1	1" NPT THREADED COUPLING	94	26931	1	BLADE HOLDER ASSEMBLY, MITI MIKE
40	13899	2	#6 JIC CAP	95	26932	2	WELDMENT- STAND - MITI MIKE
41	13974	1	16-M-JIC X 16-M-NPT 90 Deg. Elbow	96	26944	2	WELDMENT - PIN - MITI MIKE
42	13975	1	12-M-ORB X 12-M-JIC 90 Deg. Elbow	97	26948	1	WELDMENT - Flat, Pump Stabilizer
43	13976	2	12-M-JIC X 12-M-NPT 90 Deg. Elbow	98	26954	1	PLATE - FAN MOUNT/SHROUD
44	13978	2	STRAIGHT, 12-M-JIC X 12-M-NPT	99	27010	1	BRUSH TIGER FRONT MOUNT - SS QA
45	13981	2	8-M-ORB X 8-M-JIC Straight	100	27011	1	DECK WELDMENT - BRUSH TIGER
46	15256	2	Hex Bolt, 1/4" X 2-3/8" Gr.5 Plated	101	27012	1	HITCH FRAME WELDMENT - BRUSH TIGER
47	15292	3	3/4" HOSE CLAMP BODY, TWIN	102	27013	1	EXTENSION ARM WELDMENT - BRUSH TIGER
48	15293	3	Cover Plate - Twin, Group 2	103	27029	1	BLADE SHIELD, BRUSH TIGER
49	15465	2	Tubing Insert, 3" Sqr. X 5-8 Gage	104	27030	1	TEE WELDMENT, STABILIZING FOOT - BT
50	15845	1	DECAL KIT, HYDRAULIC	105	27035	1	ROD, WEIGHT RETAINING - BRUSH TIGER
51	15852	2	RED REFLECTOR DECAL	106	27037	1	LINK, CYLINDER - SKID STEER QA - BT
52	15853	2	YELLOW REFLECTOR DECAL	107	27038	1	CHAIN, SHIPPING (30"LEN.)-B.TIGER
53	15860	6	U-NUT, 1/4"-20				

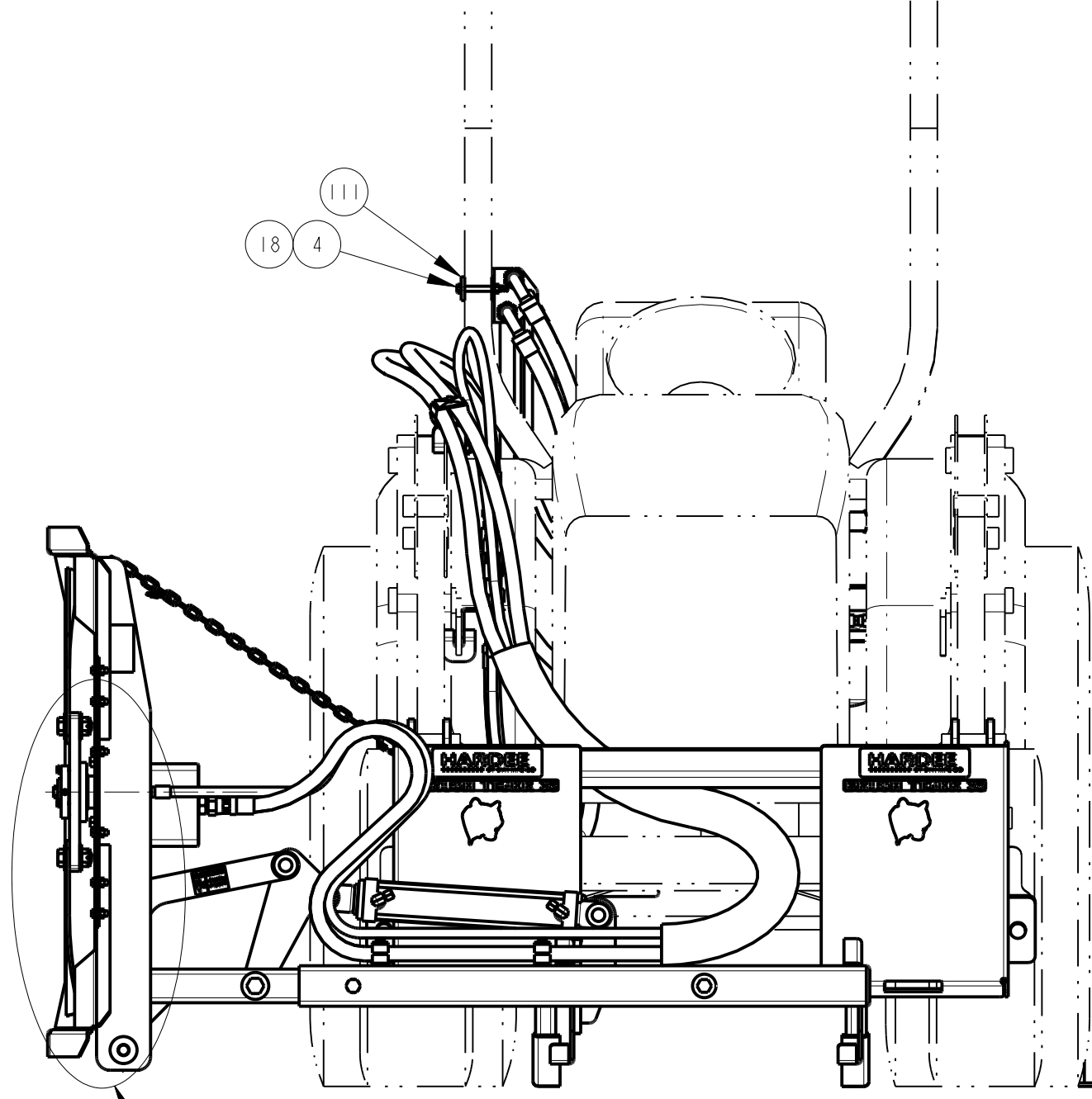
[TABLE CONTINUED ON SHEET 8]

DWG. NO.	27000	REV.	B	
REV	CHANGE	BY	DATE	ECN
IR	INITIAL RELEASE	C.K.N.	6/8/20	1759
A	ADDED MANUAL CANISTER.	M.J.Z.	8/10/20	1776
B	ADDED 27053 & 10071.	M.J.Z.	8/20/20	1777



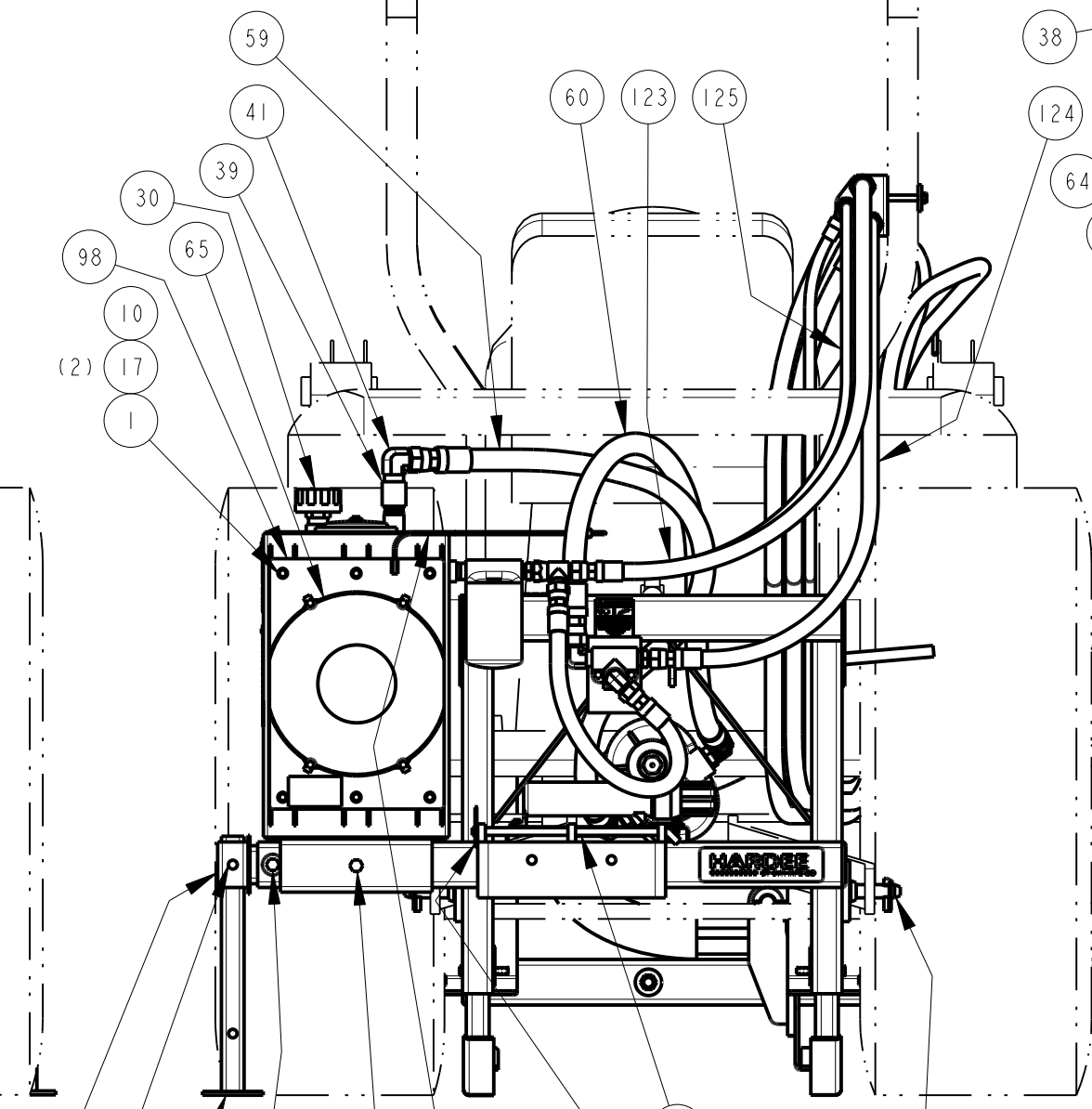
108	27039	1	CLAMP WELDMENT, HOSE, RIGHT- B.TIGER
109	27040	1	STAND WELDMENT, STABILIZING FOOT-BT
110	27044	1	BRACKET, BULKHEAD SUPPORT - B.TIGER
111	27045	1	CLAMP PLATE, BULKHEAD SUPPORT - BT
112	27046	1	BRACKET, BULKHEAD INLINE SPRT., B.T.
113	27053	1	BLADE WASHER - BRUSH TIGER
114	15845-2	1	DANGER DECAL (KIT 15845)

DWG. NO.	27000	REV.	B	
REV	CHANGE	BY	DATE	ECN
IR	INITIAL RELEASE	C.K.N.	6/8/20	1759
A	ADDED MANUAL CANISTER.	M.J.Z.	8/10/20	1776
B	ADDED 27053 & 10071.	M.J.Z.	8/20/20	1777

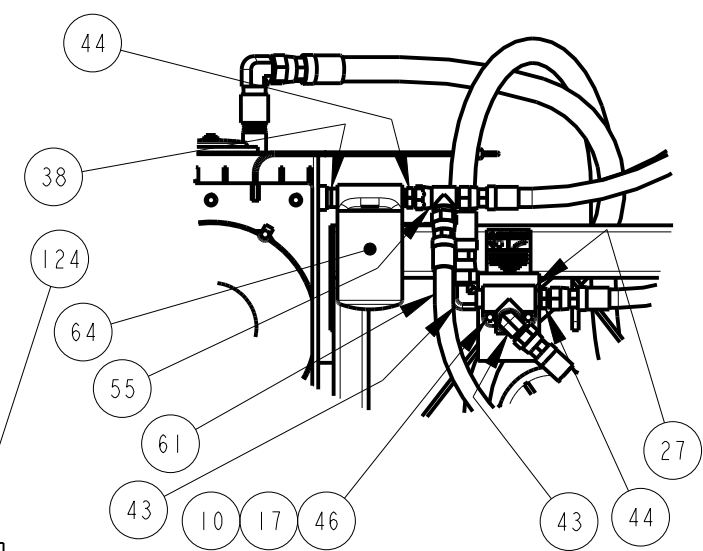


SEE DETAIL P
(SHEET 10)

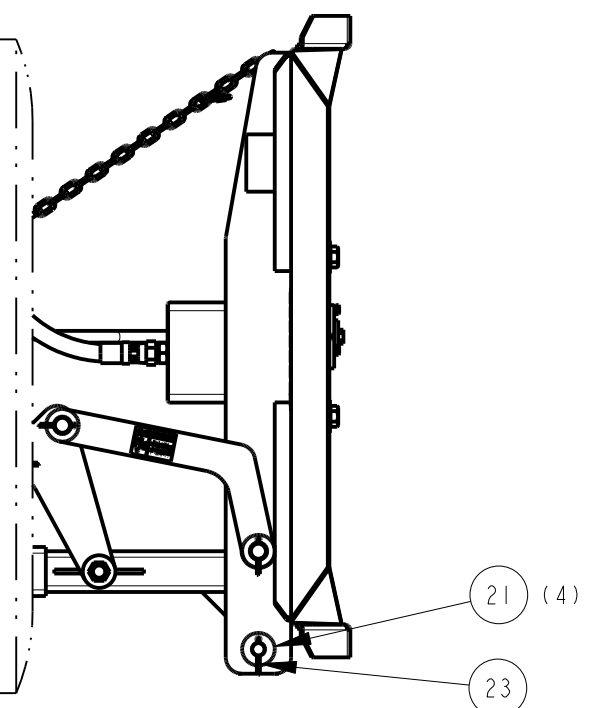
J. DEERE FRONT VIEW



J. DEERE REAR VIEW



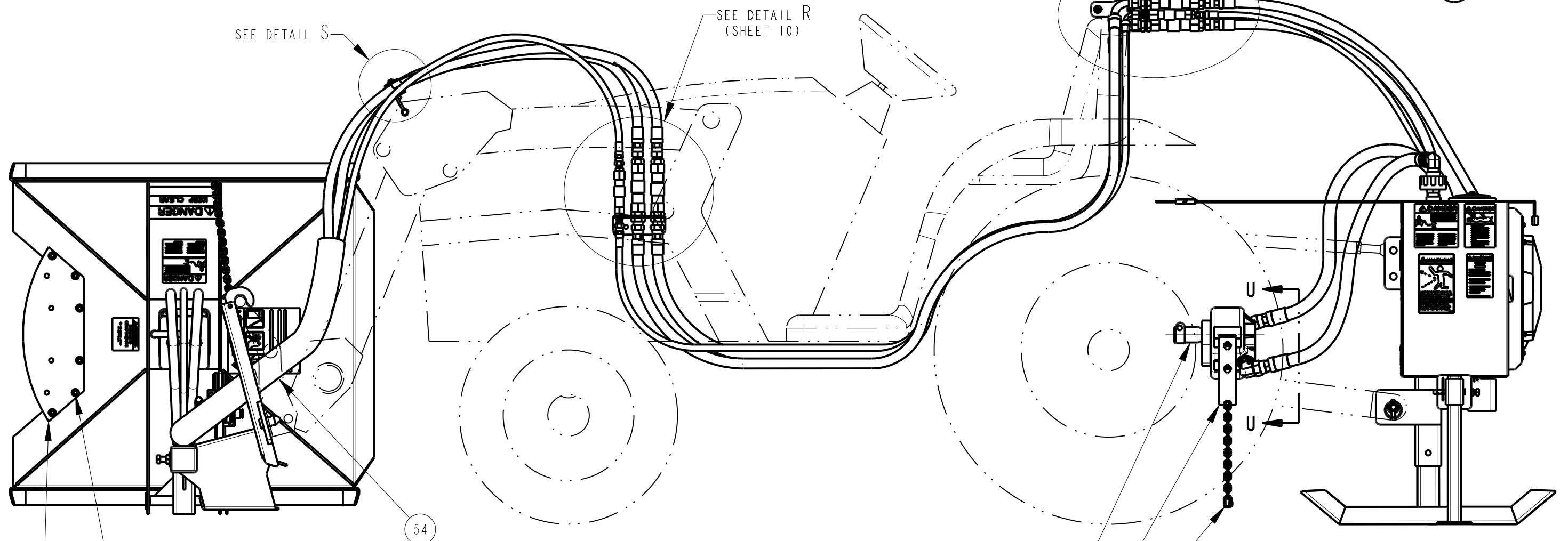
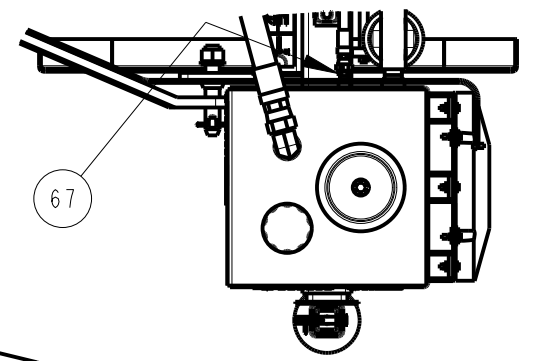
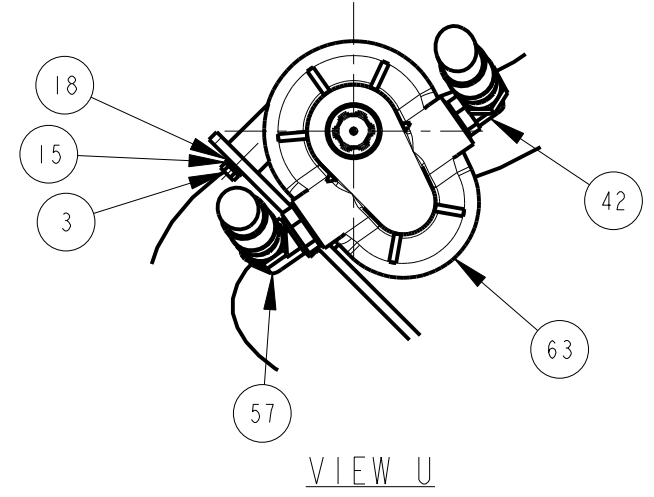
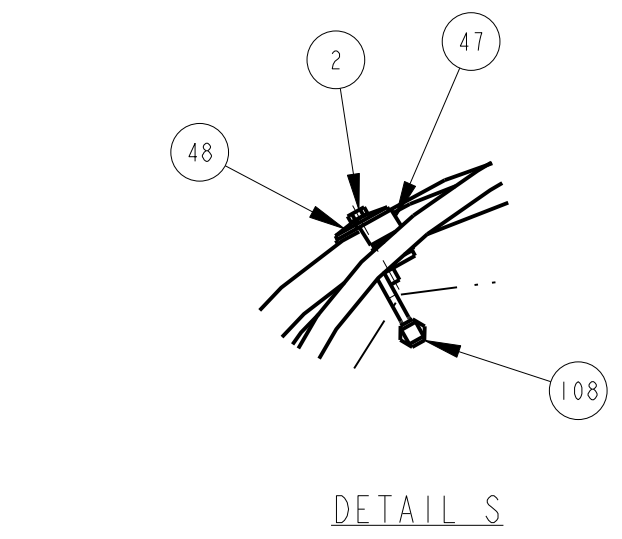
REAR COMPONENTS DETAIL



All Dimensions in Inches Unless Otherwise Specified
Dimensions in [] are in Millimeters
Tolerance Unless Otherwise Specified
Fractional Dimensions: 1/16"
Decimal Dim. to Limits Shown
Angular Dimensions: 1°
All Holes to be +0 -1/32"

MODELED BY	M. J. Z.	4/8/20	HARDEE BY EVH MFG. CO. LORIS S.C.	
CHECKED BY	C. K. N.	4/24/20		
MATERIAL	R.M.N.	N/A	DESCRIPTION	SHEET 8 of 11
Manufactured By: EVH Mfg. Co., LLC			BRUSH TIGER - 35, COMPLETE	
DO NOT SCALE	B DWG SIZE	DWG. NO.	27000	

DWG. NO.	27000		REV.	B	
REV	CHANGE	BY	DATE	ECN	
IR	INITIAL RELEASE	C.K.N.	6/8/20	1759	
A	ADDED MANUAL CANISTER.	M.J.Z.	8/10/20	1776	
B	ADDED 27053 & 10071.	M.J.Z.	8/20/20	1777	



All Dimensions in Inches Unless Otherwise Specified
 Dimensions in [] are in Millimeters
 Tolerance Unless Otherwise Specified
 Fractional Dimensions: 1/16" Angular Dimensions: 1°
 Decimal Dim. to Limits Shown All Holes to be +0 -1/32"

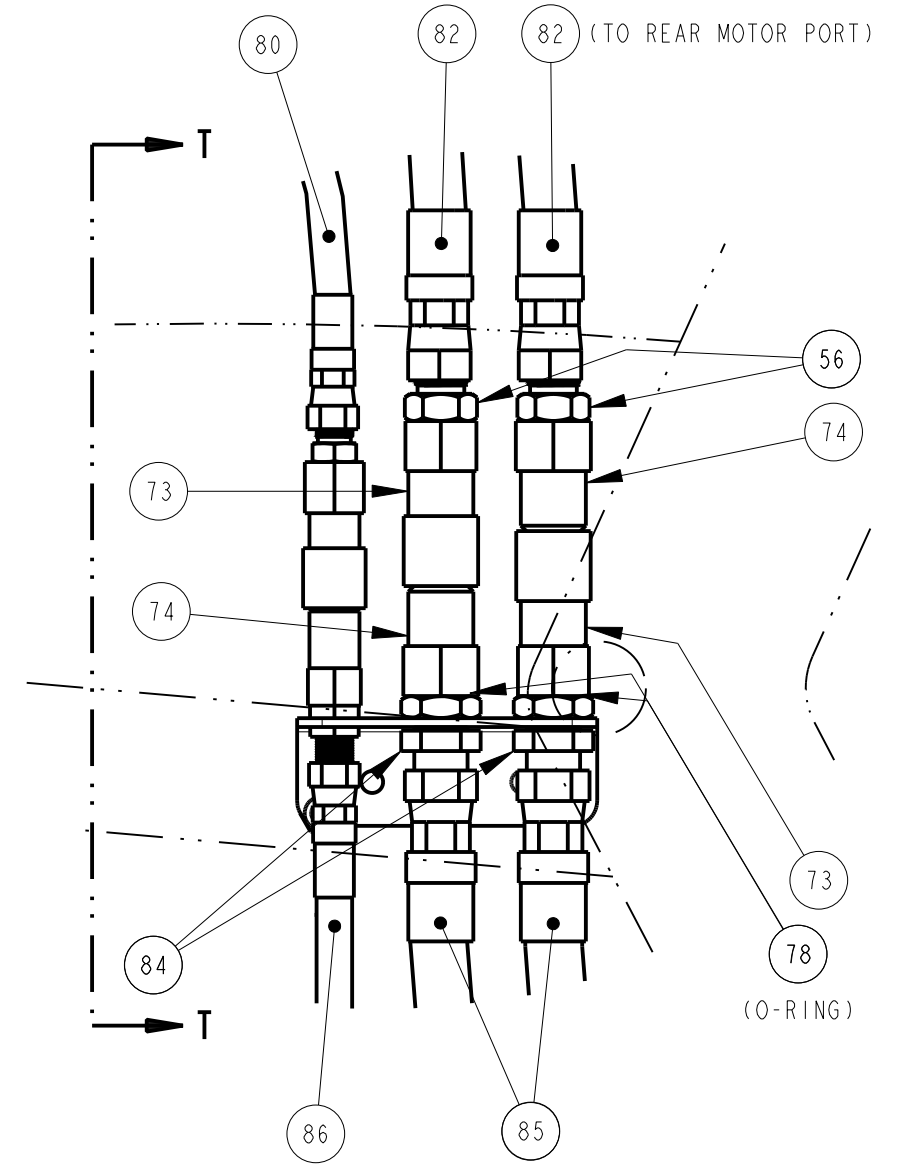
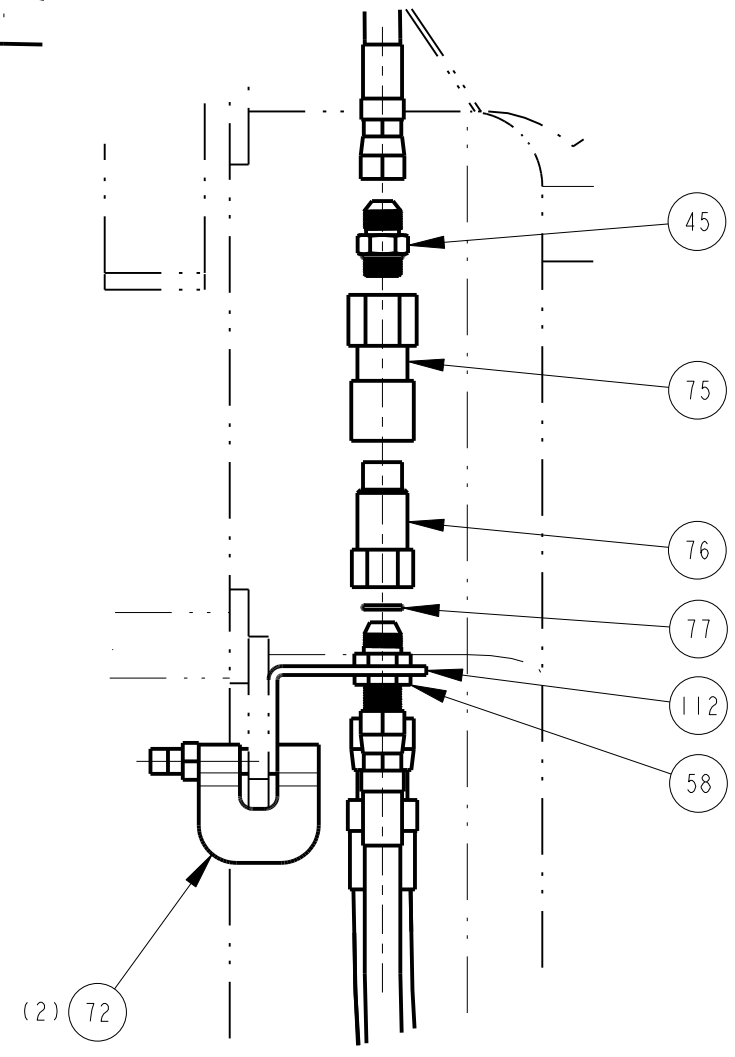
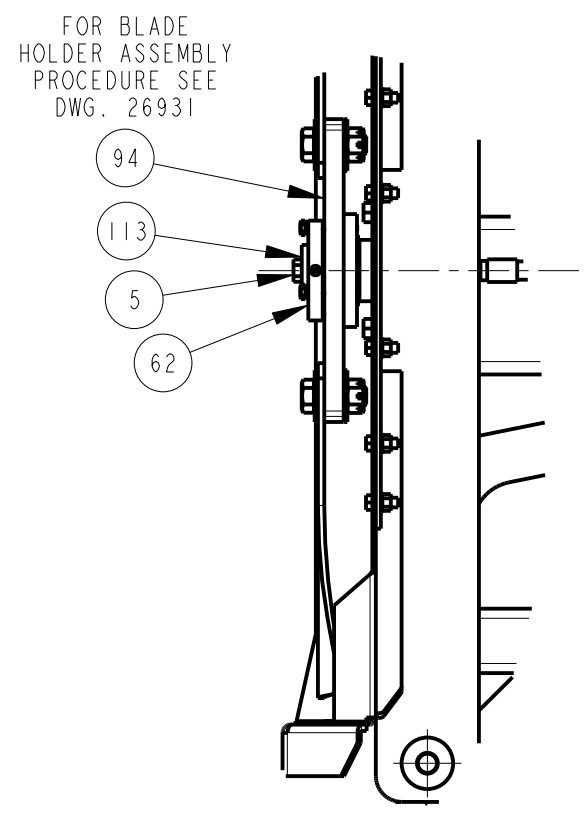
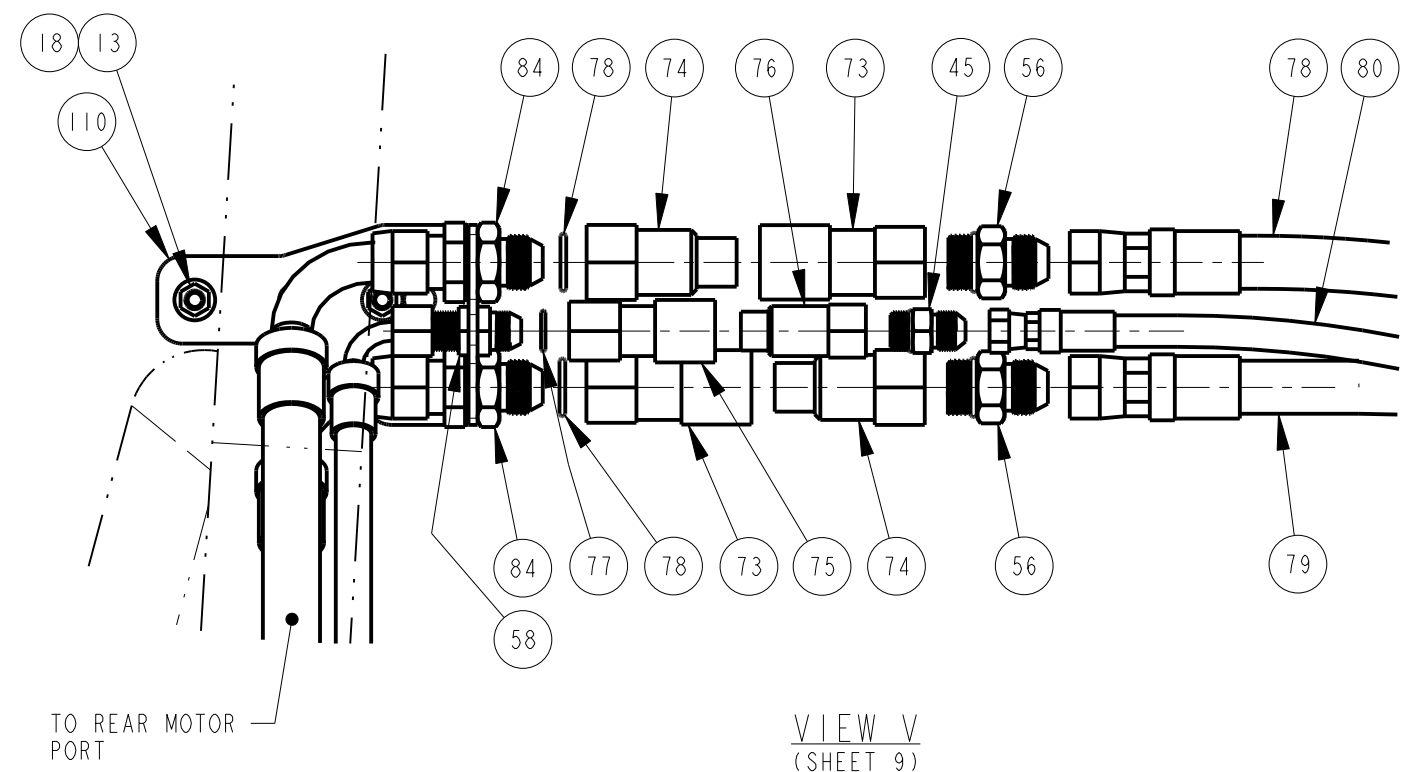
MODELED BY	M. J. Z.	4/8/20
CHECKED BY	C. K. N.	4/24/20

MATERIAL	R.M.N.
	N/A

Manufactured By:
 EVH Mfg. Co., LLC

HARDEE BY EVH MFG. CO. LORIS S.C.	
DESCRIPTION	SHEET 9 of 11
BRUSH TIGER - 35, COMPLETE	
DO NOT SCALE	DWG. NO. 27000

DWG. NO.	27000	REV.	B
REV	CHANGE	BY	DATE ECN
IR	INITIAL RELEASE	C.K.N.	6/8/20 1759
A	ADDED MANUAL CANISTER.	M.J.Z.	8/10/20 1776
B	ADDED 27053 & 10071.	M.J.Z.	8/20/20 1777

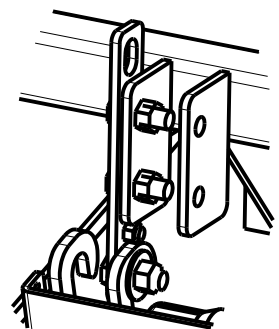
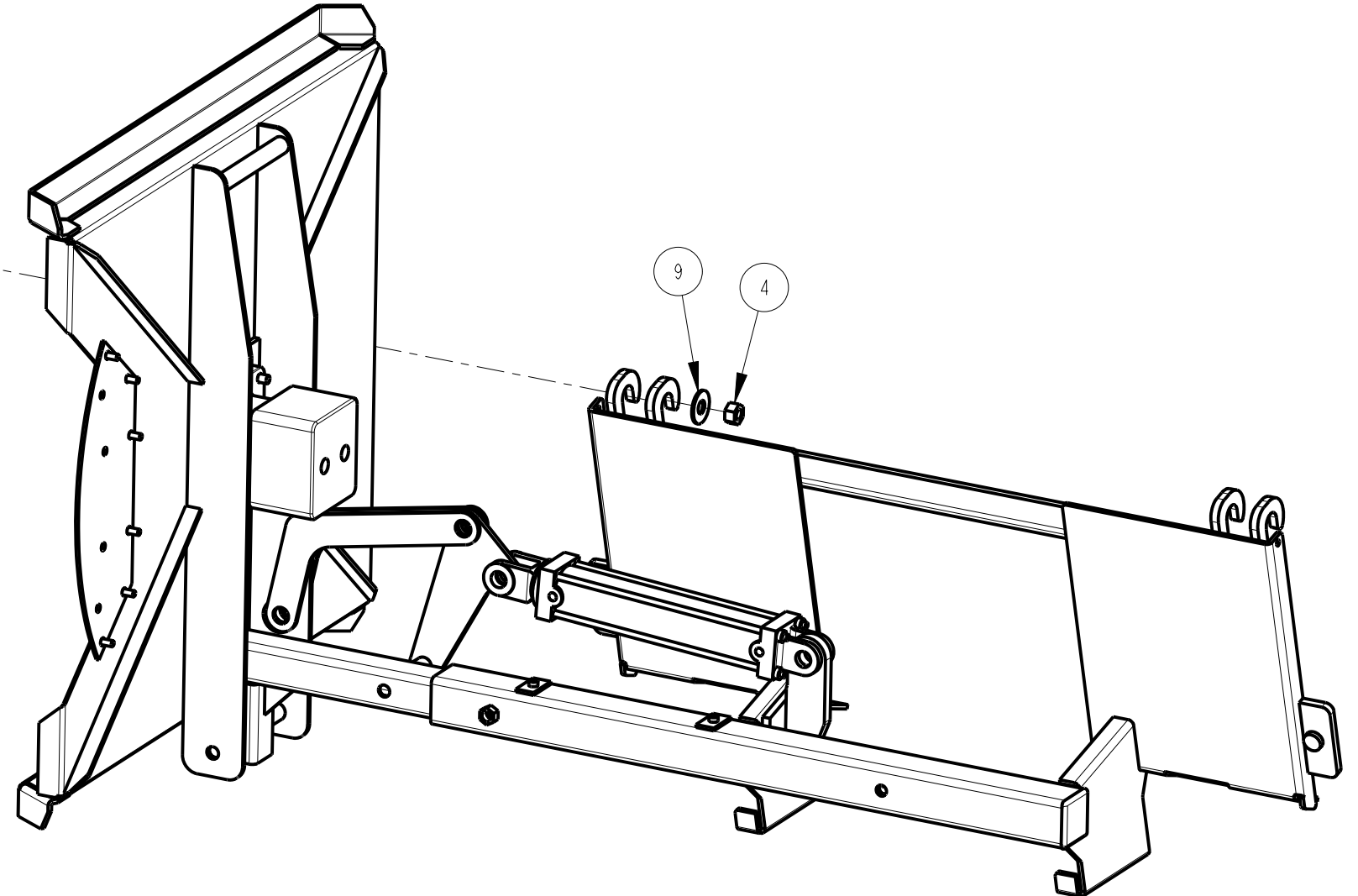
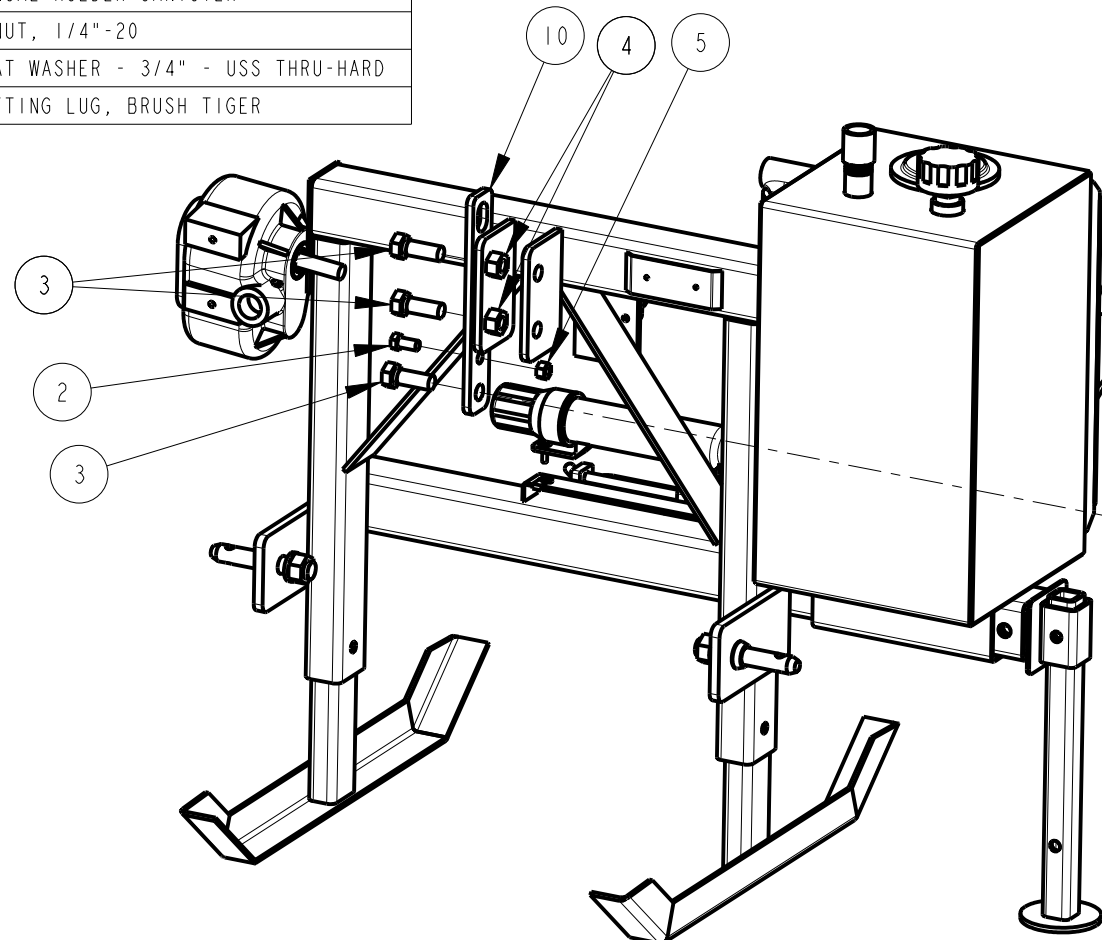


All Dimensions in Inches Unless Otherwise Specified
 Dimensions in [] are in Millimeters
 Tolerance Unless Otherwise Specified
 Fractional Dimensions: 1/16" Angular Dimensions: 1°
 Decimal Dim. to Limits Shown All Holes to be +0 -1/32"

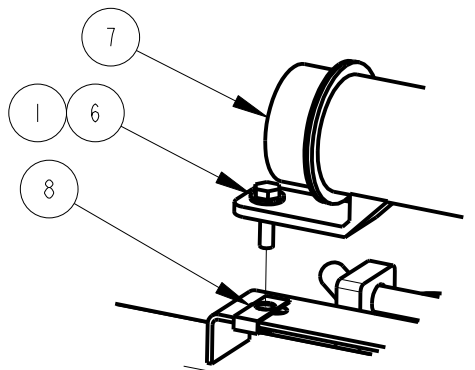
MODELED BY	M. J. Z.	4/8/20	HARDEE BY EVH MFG. CO. LORIS S.C.	
CHECKED BY	C. K. N.	4/24/20		
MATERIAL	R.M.N.	N/A	DESCRIPTION	SHEET 10 of 11
Manufactured By: EVH Mfg. Co., LLC			BRUSH TIGER - 35, COMPLETE	
DO NOT SCALE	B	DWG. NO.	27000	

Item	Part Number	Qty.	Description
1	10002	2	Hex Bolt, 1/4"-20 X 1" Gr.5 PLATED
2	10071	1	Hex Bolt, 1/2" X 1" GR.5 PLATED
3	10111	3	Hex Bolt 3/4"-10 X 2" gr.5 Plated
4	10167	3	3/4" HEX NUT (Gr.5 PLATED)
5	10176	1	1/2" Locknut (Gr.5 Plated)
6	10200	2	1/4" Plated Flatwasher
7	15854	1	MANUAL HOLDER CANISTER
8	15860	2	U-NUT, 1/4"-20
9	16475	1	FLAT WASHER - 3/4" - USS THRU-HARD
10	27019	1	LIFTING LUG, BRUSH TIGER

DWG. NO.	27000		REV.	B
REV	CHANGE	BY	DATE	ECN
IR	INITIAL RELEASE	C.K.N.	6/8/20	1759
A	ADDED MANUAL CANISTER.	M.J.Z.	8/10/20	1776
B	NO CHANGES ON THIS SHEET.	M.J.Z.	8/20/20	1777



LIFTING LUG DETAIL



CANISTER MOUNTING
(CAP NOT SHOWN)

SHIPPING ARRANGEMENT

All Dimensions in Inches Unless Otherwise Specified
 Dimensions in [] are in Millimeters
 Tolerance Unless Otherwise Specified
 Fractional Dimensions: 1/16" Angular Dimensions: 1°
 Decimal Dim. to Limits Shown All Holes to be +0 -1/32"

MODELED BY	M. J. Z.	4/8/20	HARDEE BY EVH MFG. CO. LORIS S.C.	
CHECKED BY	C. K. N.	4/24/20		
MATERIAL	R.M.N.	N/A	DESCRIPTION	SHEET 11 of 11
Manufactured By: EVH Mfg. Co., LLC			BRUSH TIGER - 35, COMPLETE	
DO NOT SCALE	B	DWG. NO.	27000	

Item	Part Number	Qty.	Description
1	10071	1	Hex Bolt, 1/2" X 1" GR.5 PLATED
2	16460	1	QD BUSHING, 1-1/4" - MITI MIKE
3	16474	2	Slotted Hex Nut - Zinc-Plated Grade 5 Steel
4	16475	4	FLAT WASHER - 3/4" - USS THRU-HARD
5	16476	2	COIL SPRING PIN - 1/8" HEAVY DUTY- 1-1/4" LONG
6	16477	2	BLADE, MITI MIKE
7	16570	1	BOLT KIT, Replacement for Blade Holder Bushing
8	26929	1	BLADE HOLDER WELDMENT
9	26952	2	BOLT- BLADE - MITI MIKE
10	26965	1	SHAFT KEY, MITI MIKE MOTOR
11	27053	1	BLADE WASHER - BRUSH TIGER

10071 & 16460 - NOT PART OF 26931 - REPLACEMENT PARTS ONLY

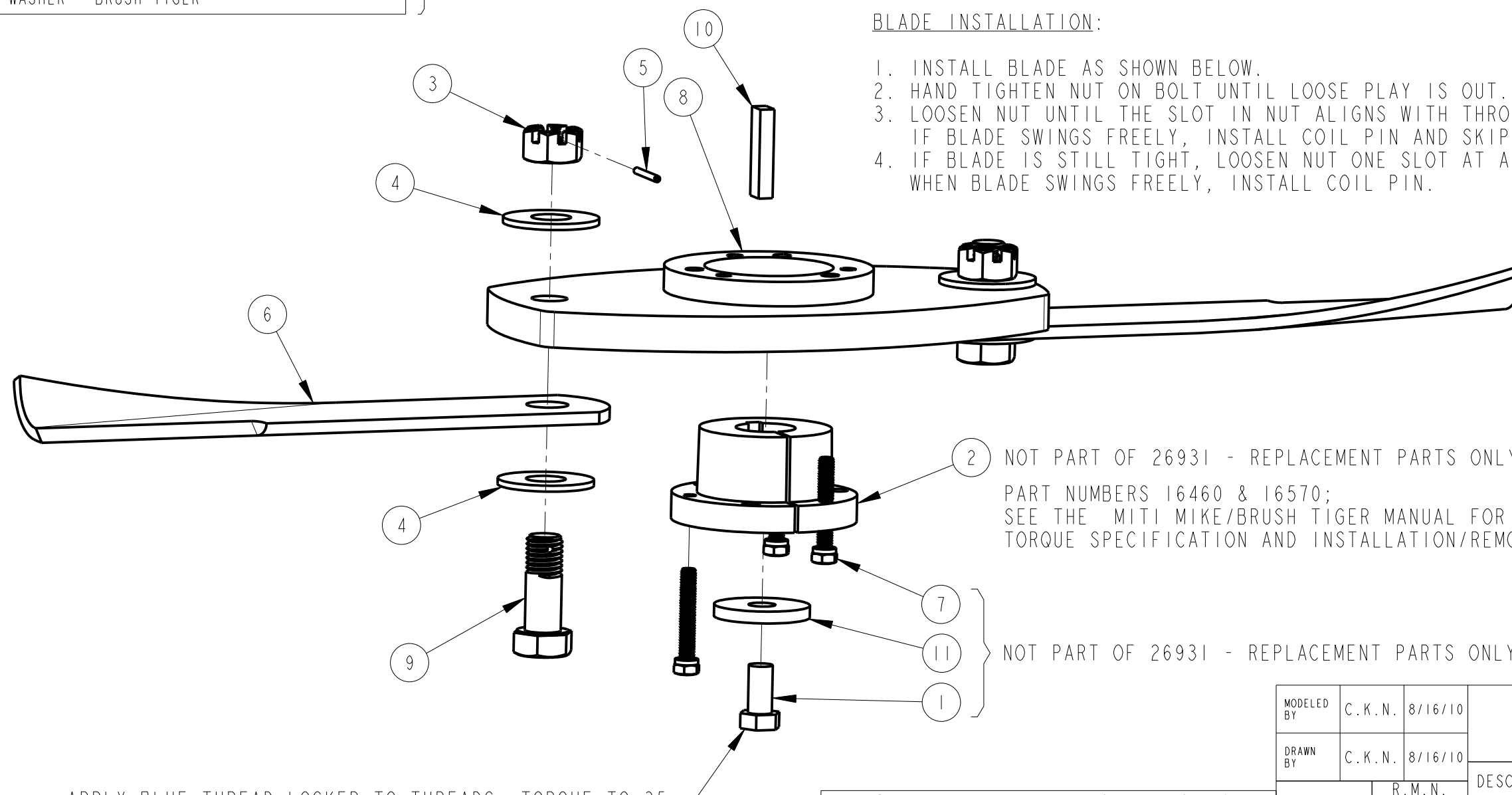
16570 - NOT PART OF 26931 - REPLACEMENT PARTS ONLY

26965 & 27053 - NOT PART OF 26931 - REPLACEMENT PARTS ONLY

DWG. NO.	26931			REV.	A
REV	CHANGE	BY	DATE	ECN	
IR	INITIAL RELEASE	C.K.N.	8/16/10	---	
A	ADDED P/N 10071 & 27053.	M.J.Z.	8/20/20	1777	

BLADE INSTALLATION:

1. INSTALL BLADE AS SHOWN BELOW.
2. HAND TIGHTEN NUT ON BOLT UNTIL LOOSE PLAY IS OUT.
3. LOOSEN NUT UNTIL THE SLOT IN NUT ALIGNS WITH THROUGH HOLE IN BOLT. IF BLADE SWINGS FREELY, INSTALL COIL PIN AND SKIP STEP 4.
4. IF BLADE IS STILL TIGHT, LOOSEN NUT ONE SLOT AT A TIME AND RETRY. WHEN BLADE SWINGS FREELY, INSTALL COIL PIN.



2 NOT PART OF 26931 - REPLACEMENT PARTS ONLY
PART NUMBERS 16460 & 16570;
SEE THE MITI MIKE/BRUSH TIGER MANUAL FOR RECOMMENDED
TORQUE SPECIFICATION AND INSTALLATION/REMOVAL PROCEDURES

7, 11, 1 NOT PART OF 26931 - REPLACEMENT PARTS ONLY

APPLY BLUE THREAD LOCKER TO THREADS. TORQUE TO 35 FT-LBS. WAIT 24 HOURS BEFORE OPERATING CUTTER.

All Dimensions in Inches Unless Otherwise Specified
Dimensions in [] are in Millimeters
Tolerance Unless Otherwise Specified
Fractional Dimensions ± 1/16" Angular Dimensions ± 1°
Decimal Dim. to Limits Shown All Holes to be +0 -1/32"

MODELED BY	C.K.N.	8/16/10	HARDEE BY EVH MFG. CO. LORIS S.C.	
DRAWN BY	C.K.N.	8/16/10		
MATERIAL	R.M.N.	N/A	DESCRIPTION	SHEET 1 of 1
Manufactured By: EVH Mfg. Co., LLC			BLADE HOLDER ASSEMBLY, MITI MIKE	
DO NOT SCALE	B	DWG. NO.	26931	