

| ITEM NO. | PART NUMBER | QTY REQD. | NOMENCLATURE OR DESCRIPTION |
|----------|-------------|-----------|-----------------------------|
| 1 | 40251 | 1 | FRAME WELDMENT |
| 2 | 40179 | 1 | SCARIFIER LOCK WELDMENT |
| 3 | 40162 | 2 | SCARIFIER LOCK |
| 4 | 40309 | 1 | RIGHT SIDE "A" FRAME |
| 5 | 40354 | 1 | LEFT SIDE "A" FRAME |
| 6 | 40166 | 1 | HITCH PIPE |
| 7 | 40167 | 2 | "A" FRAME BRACE |
| 8 | 40207 | 2 | LOCKING PIN |
| 9 | 10431 | 2 | 60" CUTTING EDGE |
| 10 | 10485 | 5 | ADJUSTABLE SCARIFIER |
| 11 | 10346 | 6 | THREE POINT SNAP PIN |
| 12 | 10464 | 2 | CATEGORY 1 & 2 HITCH PIN |
| 13 | 10232 | 4 | COTTER PIN (3/32" X 3/4") |
| 14 | 10116 | 1 | HEX BOLT (3/4" X 4 1/2") |
| 15 | 10111 | 6 | HEX BOLT (3/4" X 2") |
| 16 | 10168 | 7 | LOCK NUT (3/4" PLATED) |
| 17 | 10264 | 14 | PLOW BOLT (5/8" X 2") |
| 18 | 10166 | 14 | LOCK NUT (5/8" PLATED) |
| 19 | 11131 | 2 | H/W LOGO DECAL (5" X 16") |
| 20 | 11010 | 1 | H/W LOGO DECAL (4" X 12") |
| 21 | 11128 | 1 | MODEL # DECAL (2" X 5") |
| 22 | 11727 | 1 | SERIAL NUMBER PLATE |
| 23 | 10339 | 2 | RIVET FOR SERIAL # PLATE |
| 24 | 10335 | .5GAL. | RED PAINT |
| 25 | 11636 | 1 | DECAL SAFETY SHEET |
| 26 | 11850 | 1 | WEB DECAL |
| 27 | 15852 | 2 | RED REFLECTOR DECAL |

| DWG. NO. | | | REV. | |
|--------------|------------------------------|--------|----------|------|
| 40145 | | | E | |
| REV | CHANGE | BY | DATE | ECN |
| IR | INITIAL RELEASE | J.D.S. | 2/2/96 | --- |
| A | 1/2" LOWER TUBE & NEW LOCK | M.J.T. | 12/16/98 | 0541 |
| B | ADD SAFETY,MODEL&LOGO DECALS | M.J.T. | 8/3/99 | 0654 |
| C | NEW TWO HOLE A-FRAME DESIGN | T.O.B. | 3/7/00 | 0754 |
| D | LENGTHEN HITCH BAR | T.O.B. | 4/25/00 | 0789 |
| E | CHANGE SERIAL # PLATE | T.R.M. | 6/9/00 | 0792 |

ADD THIS REVISION AT NEXT DRAWING CHANGE

See ECR Change #0980 for Details
Add Qty. (1) Each 15852, 15853

All Dimensions in Inches Unless Otherwise Specified
Dimensions in [] are in Millimeters

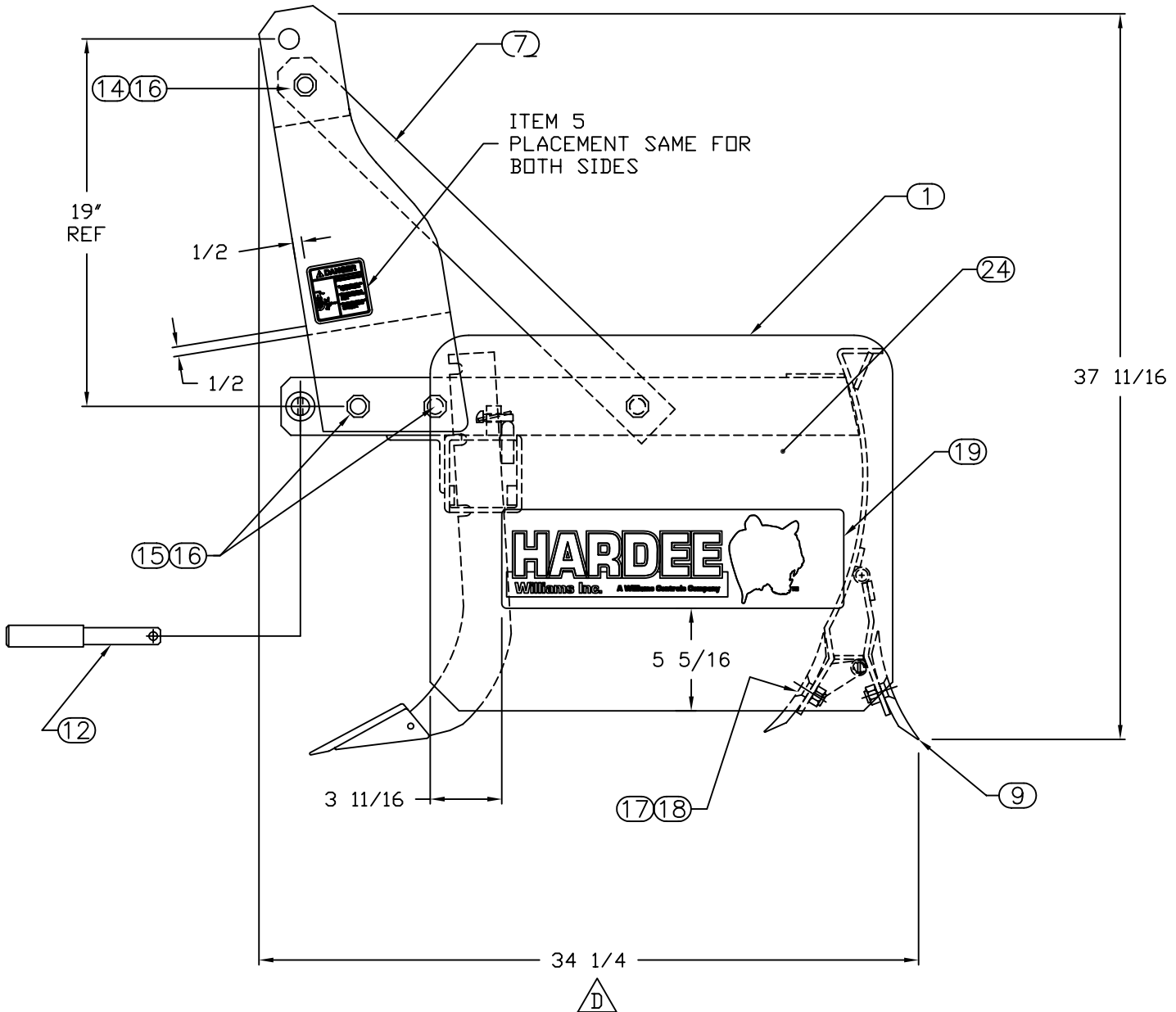
Tolerances Unless Otherwise Specified
Fractional Dimensions $\pm 1/16"$ Angular Dimensions $\pm 1^\circ$
Decimal Dim. to Limits Shown All holes to be $^{+0}_{-1/32}$

| | | | | |
|--|--------|----------|--|------------|
| DRAWN BY | M.J.T | 12/16/98 | HARDEE BY EVH MFG. CO. LORIS S.C. | |
| CHECKED BY | | | APPLICATION | OLD PART # |
| MATERIAL | R.M.N. | | ASH60 | |
| MANUFACTURED BY: HARDEE MFG. CO., LLC | | | DESCRIPTION ASH 60 BOX SCRAPER ASSEMBLY | |
| DO NOT SCALE | A | DWG. NO. | SHT. 1 OF 4 40145 | |

**ADD THIS REVISION AT NEXT
DRAWING CHANGE**

See ECR Change #0980 for Details
Add Qty. (1) Each 15852, 15853

| DWG. NO. 40145 | | | REV. E | |
|-----------------------|---------------------------------|--------|---------------|------|
| REV | CHANGE | BY | DATE | ECN |
| IR | INITIAL RELEASE | JDS | 2/2/96 | --- |
| A | 1/2 LOWER SQ. TUBE & NEW LOCK | M.A. | 4/22/98 | 0541 |
| B | ADD SAFETY, MODEL & LOGO DECALS | M.J.T. | 8/3/99 | 0654 |
| C | NEW TWO HOLE A-FRAME DESIGN | T.O.B. | 3/7/00 | 0754 |
| D | LENGTHEN HITCH BAR | T.O.B. | 4/25/00 | 0789 |
| E | CHANGE SERIAL # PLATE | T.R.M. | 6/9/00 | 0792 |



| | | | | |
|--|--------|--------|--|--------------------|
| DRAWN BY | JDS | 2/2/96 | HARDEE BY EVH MFG. CO. LORIS S.C. | |
| CHECKED BY | | | APPLICATION ASH60 | OLD PART # ---- |
| MATERIAL | R.M.N. | | DESCRIPTION ASH60 BOX SCRAPER ASSEMBLY | |
| MANUFACTURED BY: HARDEE MFG. CO., LLC | | | DO NOT SCALE | A DWG SIZE |
| | | | DWG. NO. 40145 | |
| | | | SHT 2 OF 4 | |

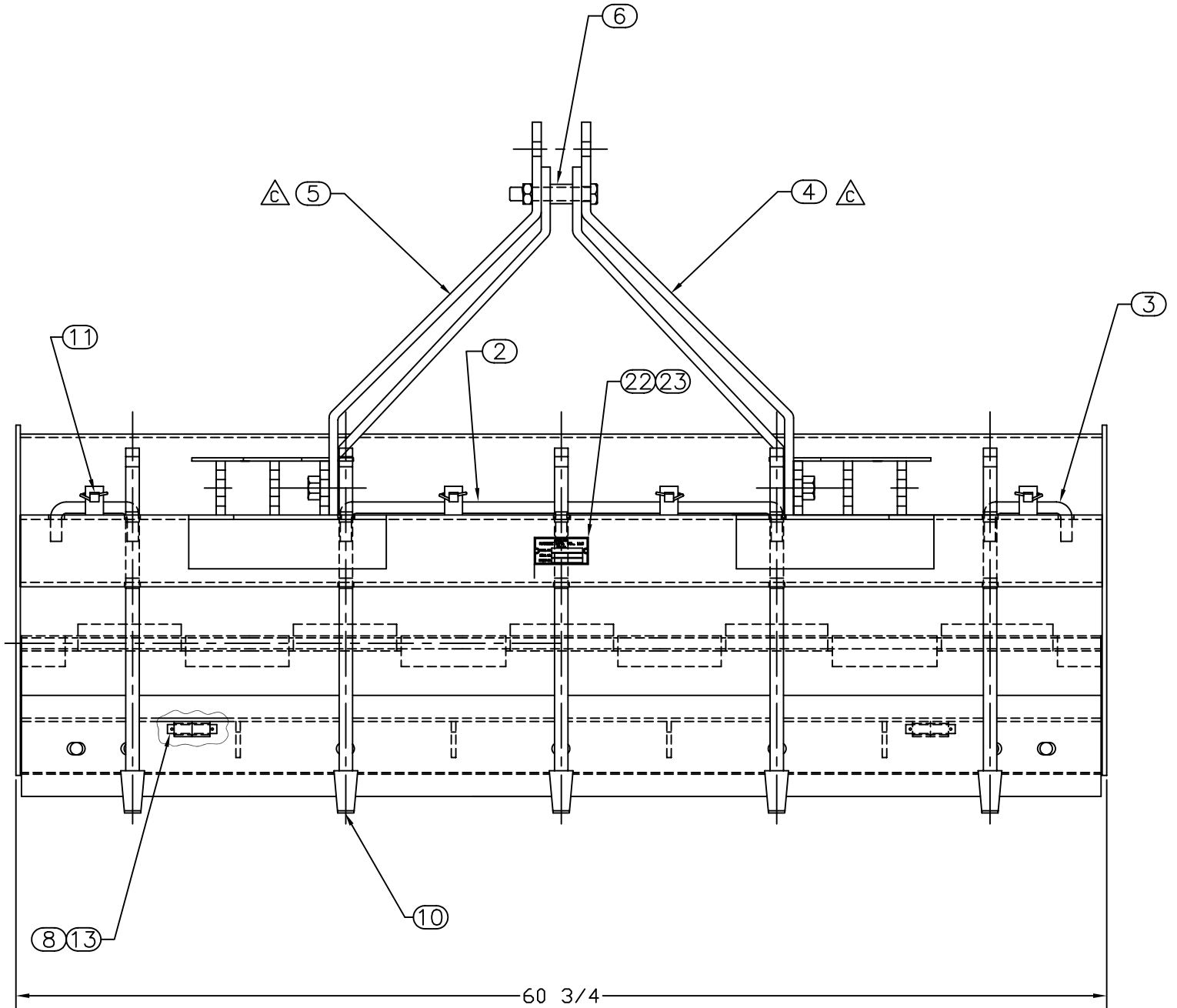
All Dimensions in Inches Unless Otherwise Specified
Dimensions in [] are in Millimeters

Tolerances Unless Otherwise Specified
Fractional Dimensions $\pm 1/16"$ Angular Dimensions $\pm 1^\circ$
Decimal Dim. to Limits Shown All holes to be $\begin{matrix} +0 \\ -1/32 \end{matrix}$

**ADD THIS REVISION AT NEXT
DRAWING CHANGE**

See ECR Change #0980 for Details
Add Qty. (1) Each 15852, 15853

| DWG. NO. | | | REV. | |
|----------|---------------------------------|--------|---------|------|
| 40145 | | | E | |
| REV | CHANGE | BY | DATE | ECN |
| IR | INITIAL RELEASE | JDS | 2/2/96 | --- |
| A | 1/2 LOWER SQ. TUBE & NEW LOCK | M.A. | 4/22/98 | 0541 |
| B | ADD SAFETY, MODEL & LOGO DECALS | M.J.T. | 8/3/99 | 0654 |
| C | NEW TWO HOLE A-FRAME DESIGN | T.O.B. | 3/7/00 | 0754 |
| D | LENGTHEN HITCH BAR | T.O.B. | 4/25/00 | 0789 |
| E | CHANGE SERIAL # PLATE | T.R.M. | 6/9/00 | 0792 |



| | | |
|------------|-----|--------|
| DRAWN BY | JDS | 2/2/96 |
| CHECKED BY | | |

**HARDEE BY
EVH MFG. CO.
LORIS S.C.**

MATERIAL R.M.N.

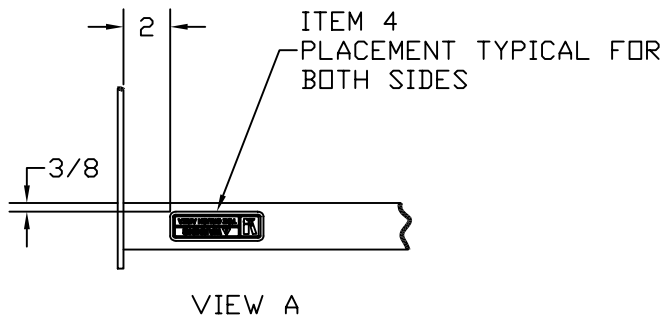
| | |
|--|------------|
| APPLICATION | OLD PART # |
| ASH60 | --- |
| DESCRIPTION ASH60 BOX SCRAPER ASSEMBLY | |

All Dimensions in Inches Unless Otherwise Specified
Dimensions in [] are in Millimeters

Tolerances Unless Otherwise Specified
Fractional Dimensions $\pm 1/16"$ Angular Dimensions $\pm 1^\circ$
Decimal Dim. to Limits Shown All holes to be $\begin{matrix} +0 \\ -1/32 \end{matrix}$

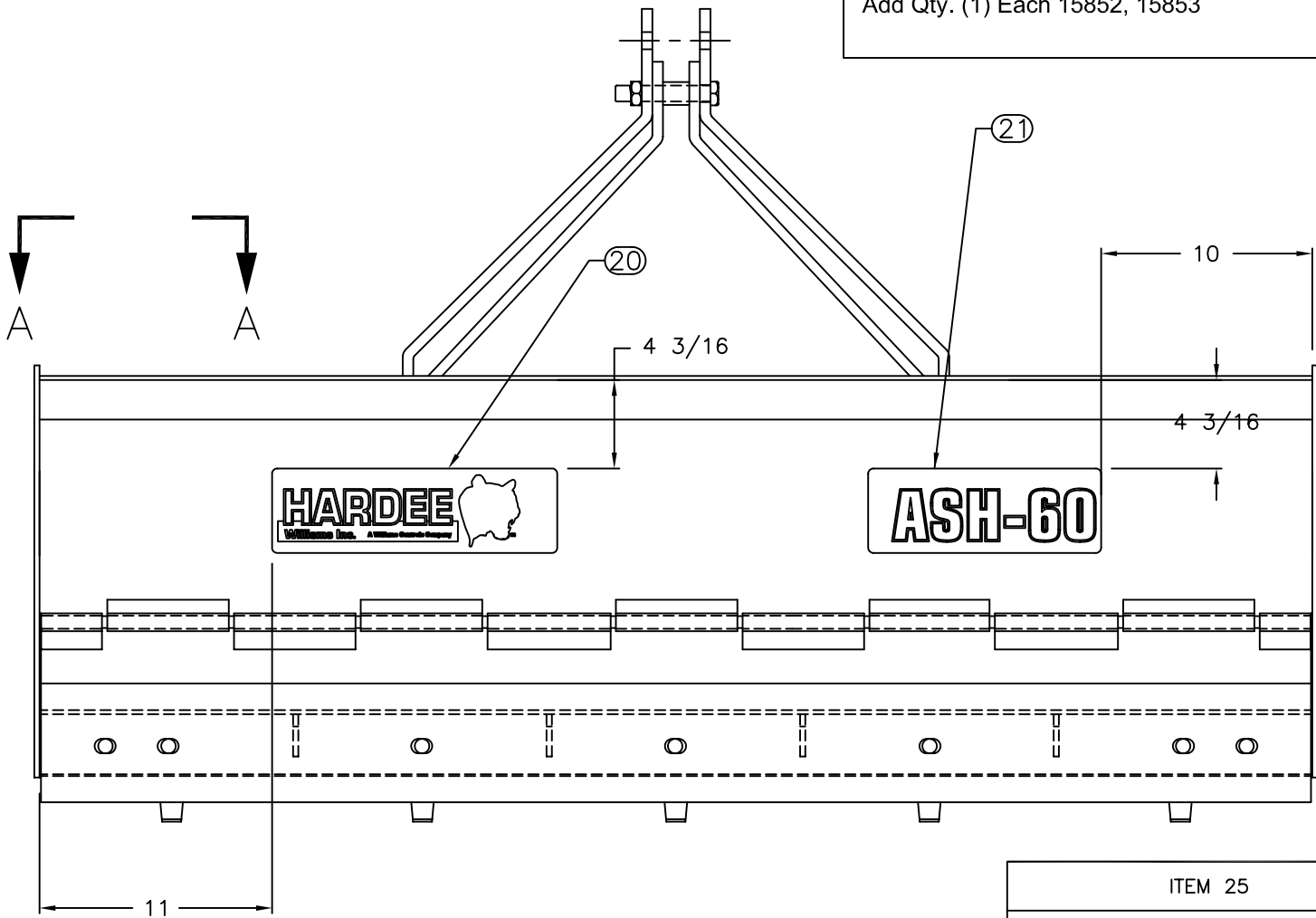
| | | |
|--------------|---|------------------|
| DO NOT SCALE | A | DWG. NO. |
| | | SHT 3 OF 4 40145 |

| | | | | |
|----------|---------------------------------|--------|---------|------|
| DWG. NO. | | | REV. | |
| 40145 | | | E | |
| REV | CHANGE | BY | DATE | ECN |
| IR | INITIAL RELEASE | JDS | 2/2/96 | ---- |
| A | 1/2 LOWER SQ. TUBE & NEW LOCK | M.A. | 4/22/98 | 0541 |
| B | ADD SAFETY, MODEL & LOGO DECALS | M.J.T. | 8/3/99 | 0654 |
| C | NEW TWO HOLE A-FRAME DESIGN | T.O.B. | 3/7/00 | 0754 |
| D | LENGTHEN HITCH BAR | T.O.B. | 4/25/00 | 0789 |
| E | CHANGE SERIAL # PLATE | T.R.M. | 6/9/00 | 0792 |



ADD THIS REVISION AT NEXT DRAWING CHANGE

See ECR Change #0980 for Details
Add Qty. (1) Each 15852, 15853



| | |
|-------------------|-----------------------------|
| ITEM 25 | |
| DECAL USAGE CHART | |
| QTY REQD. | NOMENCLATURE OR DESCRIPTION |
| 2 | ITEM 4 |
| 2 | ITEM 5 |

| | | | | |
|--|--------|----------|--|--|
| DRAWN BY | M.J.T. | 12/15/98 | HARDEE BY EVH MFG. CO. LORIS S.C. | |
| CHECKED BY | | | | |
| MATERIAL | R.M.N. | | APPLICATION | OLD PART # |
| MANUFACTURED BY: HARDEE MFG. CO., LLC | | | ASH60 | ---- |
| | | | DESCRIPTION | ASH60 BOX SCRAPER DECAL PLACEMENT SHEET |
| DO NOT SCALE | A | DWG. NO. | 40145 | |
| | | | SHT 4 OF 4 | |

All Dimensions in Inches Unless Otherwise Specified
Dimensions in [] are in Millimeters

Tolerances Unless Otherwise Specified
Fractional Dimensions $\pm 1/16"$
Decimal Dim. to Limits Shown

Angular Dimensions $\pm 1^\circ$
All holes to be $+0/-1/32$