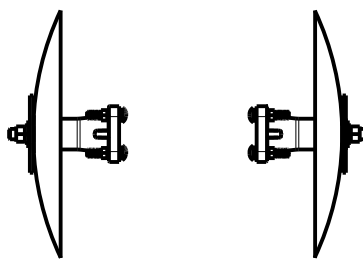


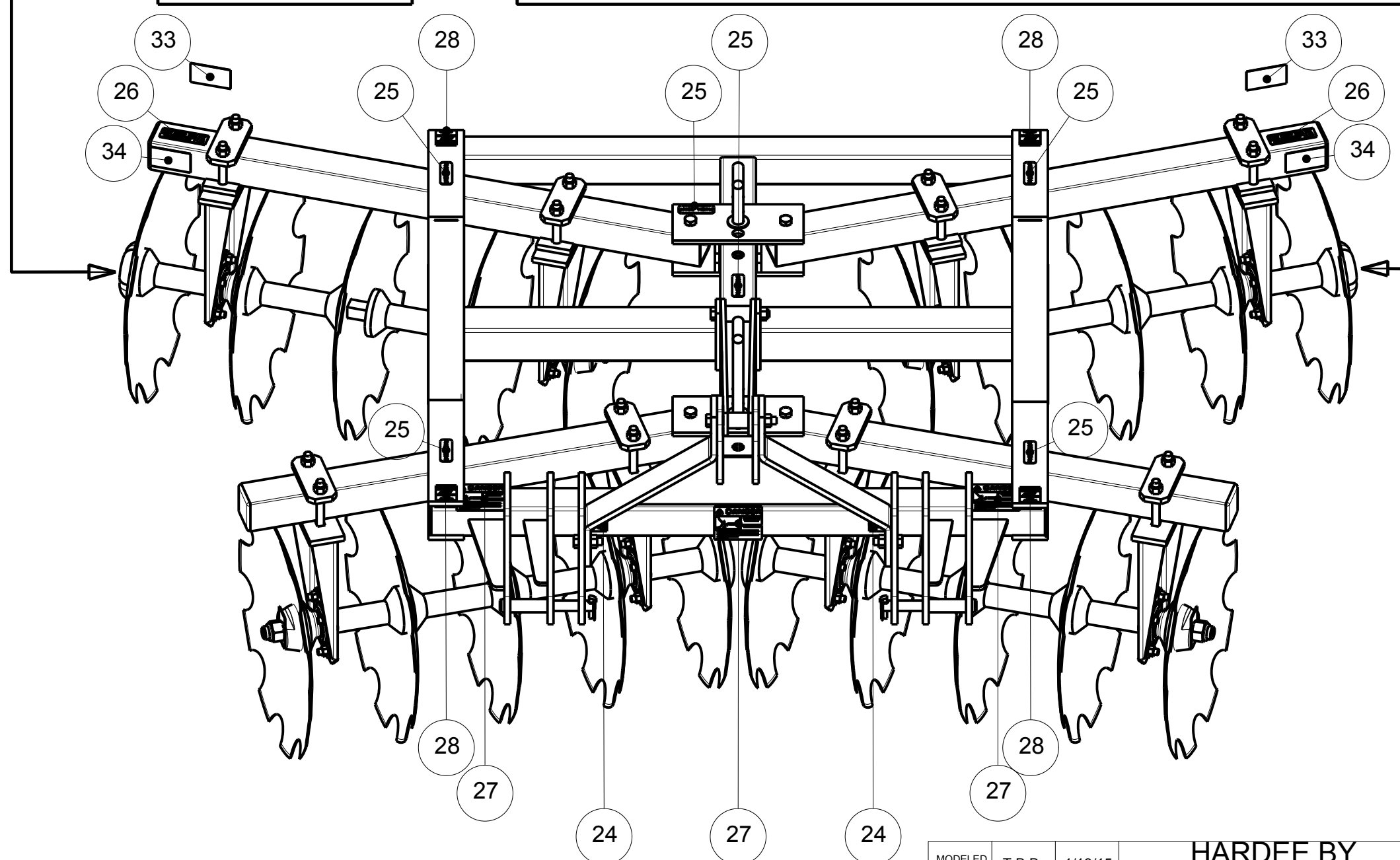
| Item | Part Number | Qty. | Description |
|------|-------------|------|---|
| 1 | 10092 | 2 | Hex Bolt 5/8 x 2 gr.5 plated |
| 2 | 10097 | 1 | Hex Bolt 5/8"-11 x 4 1/2" gr.5 Plated |
| 3 | 10098 | 4 | HEX BOLT (5/8"-11 X 5" GR. 5 PLATED) |
| 4 | 10099 | 1 | Hex Bolt 5/8" X 5 1/2" gr.5 Plated |
| 5 | 10166 | 24 | Lock Nut 5/8"-11 plated |
| 6 | 10172 | 4 | Hex Head Lock-Nut (1-1/8") |
| 7 | 10176 | 32 | 1/2" Locknut (Gr.5 Plated) |
| 8 | 10274 | 32 | Carriage Head Bolt (1/2" X 1-1/4" Gr. 5 Plated) |
| 9 | 10339 | 2 | Pop Rivet |
| 10 | 10346 | 2 | 3 pt. Snap Pin (Lynch Pin) |
| 11 | 10464 | 2 | Category I and II Hitch Pin |
| 12 | 10901 | 2 | Bumper Cap (Front) |
| 13 | 10903 | 8 | Sealed Axle Bearing |
| 14 | 10904 | 16 | Bearing Retainer |
| 15 | 10906 | 8 | Bearing Spacer |
| 16 | 10907 | 4 | Nut Washer |
| 17 | 10910 | 20 | 22" Disc Blade 1-1/8" Hole |
| 18 | 10918 | 8 | Half Spool |
| 19 | 10919 | 8 | 9" Full Spool |
| 20 | 10920 | 4 | 40" Gang Bolt |
| 21 | 11032 | 3 | Small Hardee Logo Decal |
| 22 | 11061 | 2 | Decal For D-20-2022 |
| 23 | 11636 | 1 | DECAL, Landscape & Disc Harrow Kit |
| 24 | 11636-1 | 2 | WARNING DECAL (KIT 11636) |
| 25 | 11636-3 | 6 | WARNING DECAL (KIT 11636) |
| 26 | 11636-4 | 2 | WARNING DECAL (KIT 11636) |
| 27 | 11636-5 | 3 | DANGER DECAL (KIT 11636) |
| 28 | 11636-7 | 4 | WARNING DECAL (KIT 11636) |
| 29 | 11727 | 1 | Serial Number Plate |
| 30 | 11850 | 2 | Web Site Decal |
| 31 | 15450 | 16 | Carriage Head Bolt (5/8" X 5" Gr. 5 Plated) |
| 32 | 15465 | 4 | Tubing Insert, 3" Sqr. X 5-8 Gage |
| 33 | 15852 | 2 | Red Reflector Decal |
| 34 | 15853 | 2 | Yellow Reflector Decal |
| 35 | 60023 | 8 | Clamp Cap |
| 36 | 60024 | 4 | Gang Tie Plate Weldment |
| 37 | 60029 | 1 | 11" Gang Pin Weldment |
| 38 | 60037 | 4 | Nut Lock |
| 39 | 60038 | 1 | 15" Gang Pin Weldment |
| 40 | 60080 | 2 | 40" GANG BEAM |
| 41 | 60081 | 2 | Bumper Cap, Slotted (Rear) |
| 42 | 60119 | 2 | 48" GANG BEAM |
| 43 | 60124 | 1 | D-20 Main Frame Weldment |
| 44 | 60126 | 1 | A-Frame Weldment |
| 45 | 60134 | 1 | A Frame Brace Weldment |
| 46 | 60275 | 4 | Left Axle Hanger Assembly |
| 47 | 60276 | 4 | Right Axle Hanger Assembly |

OPTION - Extension:
Furrow Filler P/N: 60383



Disc Harrow D20-2022

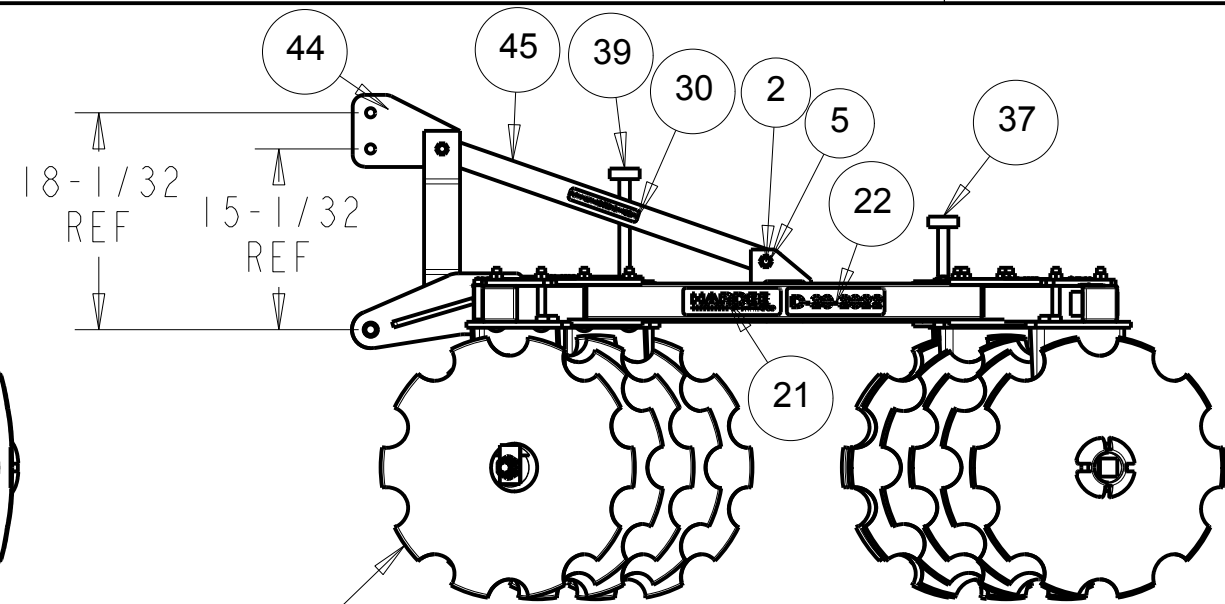
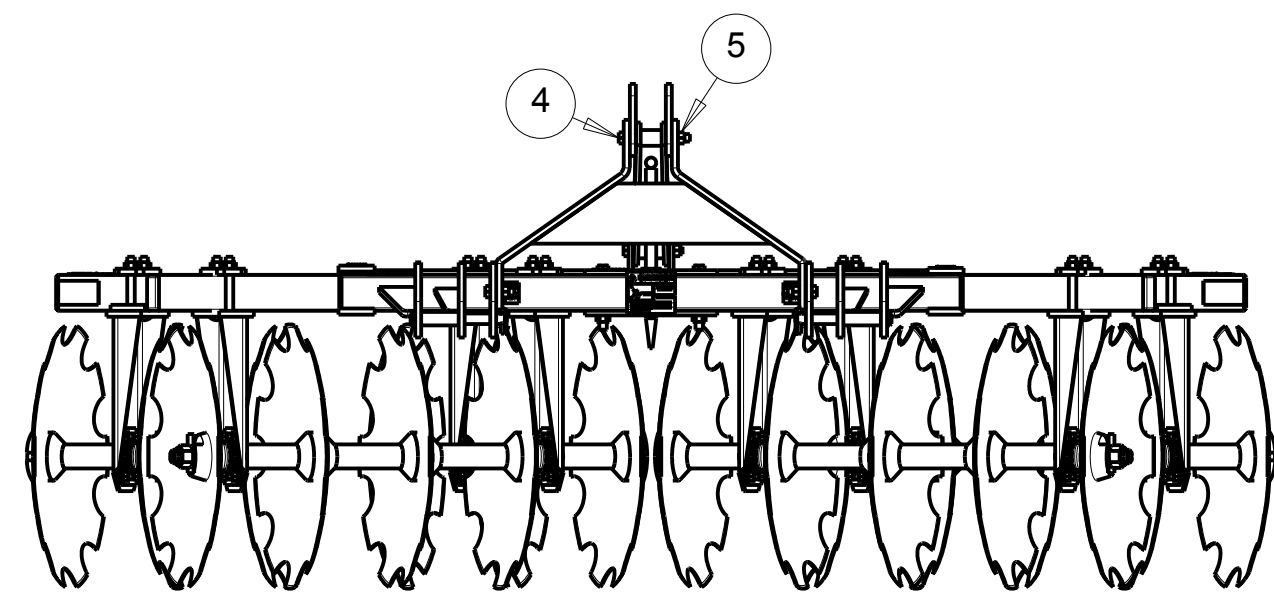
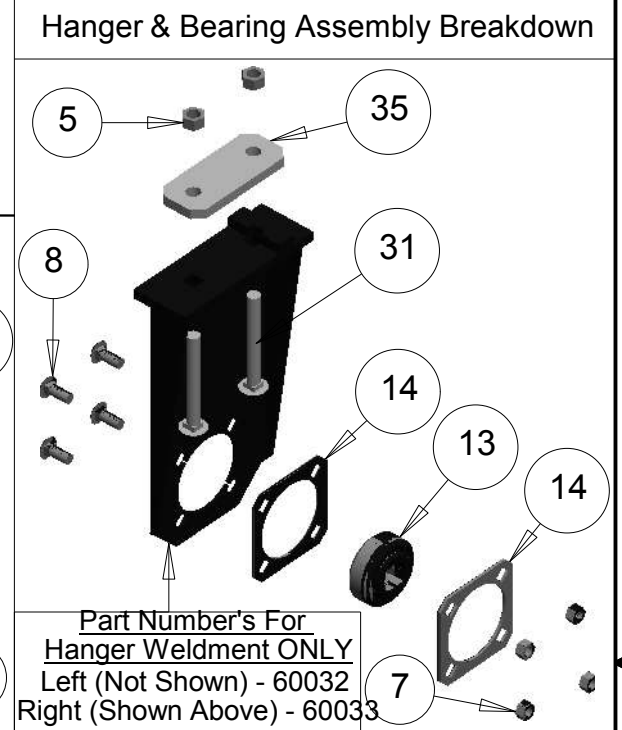
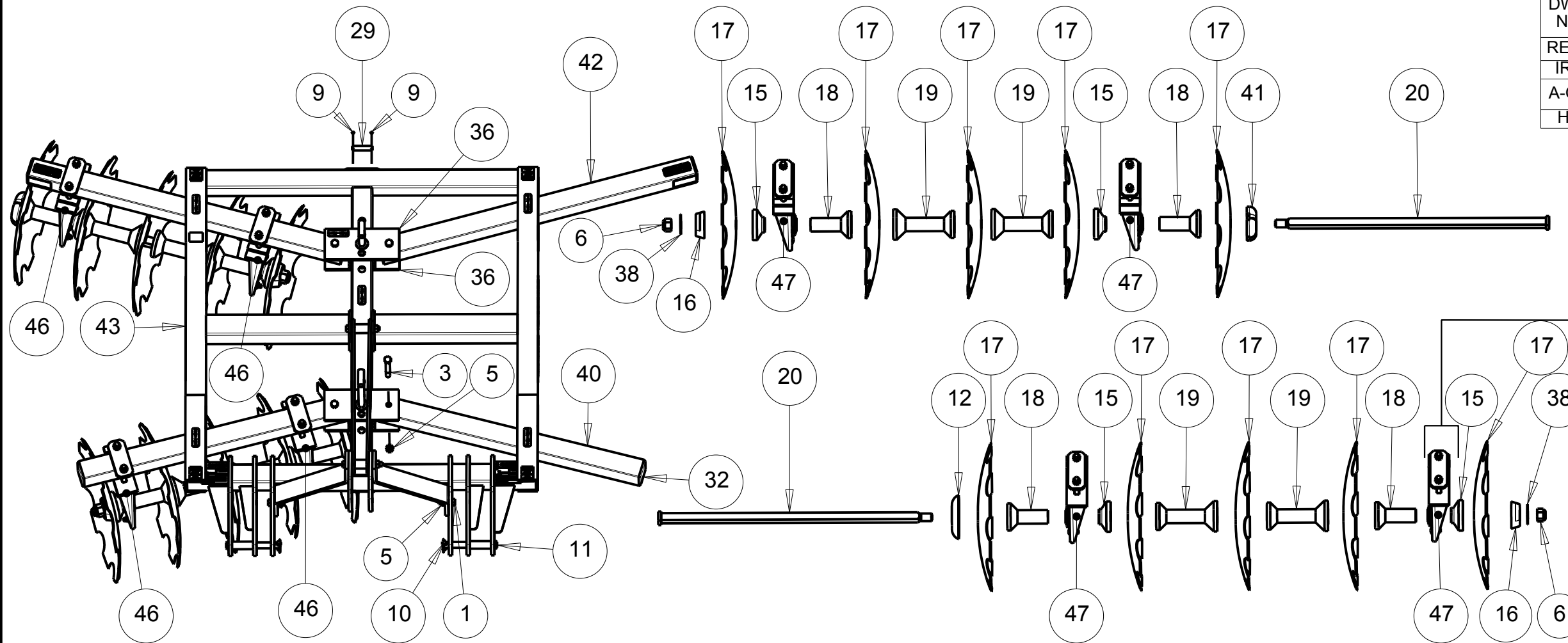
| | | | | |
|----------|--|--------|---------|------|
| DWG. NO. | 60125 | | REV. | H |
| REV | CHANGE | BY | DATE | ECN |
| IR | INITIAL RELEASE | M.J.T. | 5/21/99 | --- |
| A-G | ***These Revisions Can Be Located On Older Drawings If Needed*** | N/A | N/A | N/A |
| H | Re-Drawn& Modeled In Creo 2.0 | T.B.B. | 1/13/15 | 1644 |



All Dimensions in Inches Unless Otherwise Specified
Dimensions in [] are in Millimeters
Tolerance Unless Otherwise Specified
Fractional Dimensions ± 1/16"
Decimal Dim. to Limits Shown
Angular Dimensions ± 1°
All Holes to be +0 -1/32"

| | | | | |
|---------------------------------------|--------|----------|---|--------------|
| MODELED BY | T.B.B. | 1/13/15 | HARDEE BY EVH MFG. CO. LORIS S.C. | |
| CHECKED BY | C.K.N. | 1/13/15 | | |
| MATERIAL | R.M.N. | N/A | DESCRIPTION | SHEET 1 of 2 |
| Manufactured By: EVH Mfg. Co., LLC | | | D20-2022 Complete Assembly | |
| DO NOT SCALE | B | DWG. NO. | 60125 | |

| | | | | |
|----------|--|--------|---------|------|
| DWG. NO. | 60125 | | REV. | H |
| REV | CHANGE | BY | DATE | ECN |
| IR | INITIAL RELEASE | M.J.T. | 5/21/99 | --- |
| A-G | ***These Revisions Can Be Located On Older Drawings If Needed*** | N/A | N/A | N/A |
| H | Re-Drawn & Modeled In Creo 2.0 | T.B.B. | 1/13/15 | 1644 |



Note:
 Blades are staggered along placement of axle.
 (Blade are places 90° from the one before it.)

All Dimensions in Inches Unless Otherwise Specified
 Dimensions in [] are in Millimeters
 Tolerance Unless Otherwise Specified
 Fractional Dimensions ± 1/16"
 Decimal Dim. to Limits Shown
 Angular Dimensions ± 1°
 All Holes to be +0 -1/32"

| | | | |
|---------------------------------------|---------------|----------------------------|--|
| MODELED BY | T.B.B. | 1/13/15 | HARDEE BY EVH MFG. CO. LORIS S.C. |
| CHECKED BY | C.K.N. | 1/13/15 | |
| MATERIAL | R.M.N. N/A | DESCRIPTION SHEET 2 of 2 | |
| Manufactured By: EVH Mfg. Co., LLC | | D20-2022 Complete Assembly | |
| DO NOT SCALE | B DWG SIZE | DWG. NO. | 60125 |