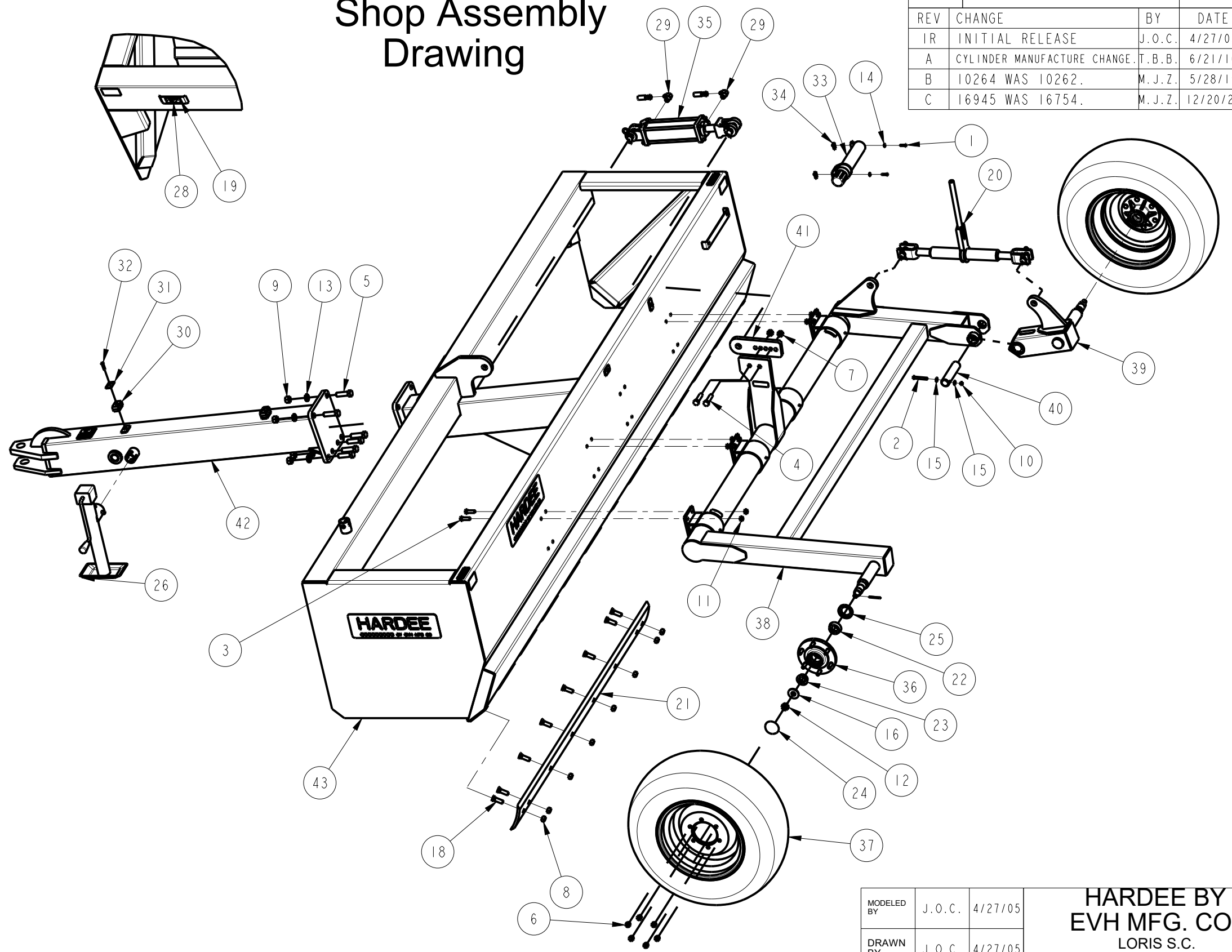


Item	Part Number	Qty.	Description
1	10002	2	HEX BOLT, 1/4-20 X 1 Gr.5 PLATED
2	10034	1	HEX BOLT, 3/8" x 2-1/2" Gr.5 PLATED
3	10072	16	HEX BOLT, 1/2 x 1 1/2 Gr.5 PLATED
4	10093	2	HEX BOLT, 5/8" X 2-1/2" Gr.5 PLATED
5	10112	6	HEX BOLT, 3/4" X 2-1/2" Gr.5 PLATED
6	10150	12	LUG NUT (1/2" - 20 UNF)
7	10156	2	Nylon Lock Nut, 5/8" Plated
8	10166	16	LOCKNUT, 5/8"-11 PLATED
9	10167	6	HEX NUT, 3/4" (Gr.5 PLATED)
10	10175	1	LOCKNUT, 3/8"-16 Gr.5 PLATED
11	10176	16	LOCKNUT, 1/2" (Gr.5 PLATED)
12	10179	2	CASTLE NUT, 3/4" Gr.5 Fine Thread
13	10186	6	LOCK WASHER, 3/4" PLATED
14	10200	2	FLATWASHER, 1/4" PLATED
15	10202	2	FLATWASHER, 3/8" PLATED
16	10206	2	FLATWASHER, 3/4" PLATED
17	10252	2	COTTER PIN, 3/16" X 2" PLATED
18	10264	16	Plow Bolt 5/8 x 2 Gr.5 Plated
19	10339	2	POP RIVET
20	10343	1	RATCHET JACK
21	10432	2	72" CUTTING EDGE
22	10437	2	INNER BEARING
23	10438	2	OUTER BEARING
24	10439	2	DUST CAP
25	10440	2	GREASE SEAL
26	10618	1	JACK, 10"
27	10924	2	3/8" X 163" HYD. HOSE (NOT SHOWN)
28	11727	1	SERIAL NUMBER PLATE
29	13905	2	ELBOW, 6-M-JIC X 8-M-NPT
30	15291	2	5/8" Tube Clamp Set - Twin, Polypropylene
31	15293	2	COVER PLATE - Twin, Group 2
32	15294	2	HEX BOLT, 5/16"-18 X 1-1/4" Gr.5 Plated
33	15854	1	MANUAL HOLDER CANISTER
34	15860	2	U-NUT, 1/4"-20 UNC
35	16945	1	CYLINDER, 3" X 8"
36	25203	2	WHEEL HUB W/ HARDWARE
37	30324	2	11L X 15 Tire, Tube and Rim
38	40433	1	Tailwheel Frame Weldment
39	40451	1	TILT ARM WELDMENT
40	40456	1	Pin, Tilt Arm
41	40457	1	Cylinder Adjusting Bracket
42	40458	1	Tongue Weldment, Standard
43	40490	1	Frame Weldment, PTS 144
44	11636-5	1	DANGER DECAL (KIT 11636)

Shop Assembly Drawing



DWG. NO.	40401		REV. C		
REV	CHANGE	BY	DATE	ECN	
IR	INITIAL RELEASE	J.O.C.	4/27/05	---	
A	CYLINDER MANUFACTURE CHANGE	T.B.B.	6/21/16	1655	
B	10264 WAS 10262.	M.J.Z.	5/28/19	1747	
C	16945 WAS 16754.	M.J.Z.	12/20/24	1789	

All Dimensions in Inches Unless Otherwise Specified
Dimensions in [] are in Millimeters
Tolerance Unless Otherwise Specified
Fractional Dimensions: 1/16" Angular Dimensions: 1°
Decimal Dim. to Limits Shown All Holes to be +0 -1/32"

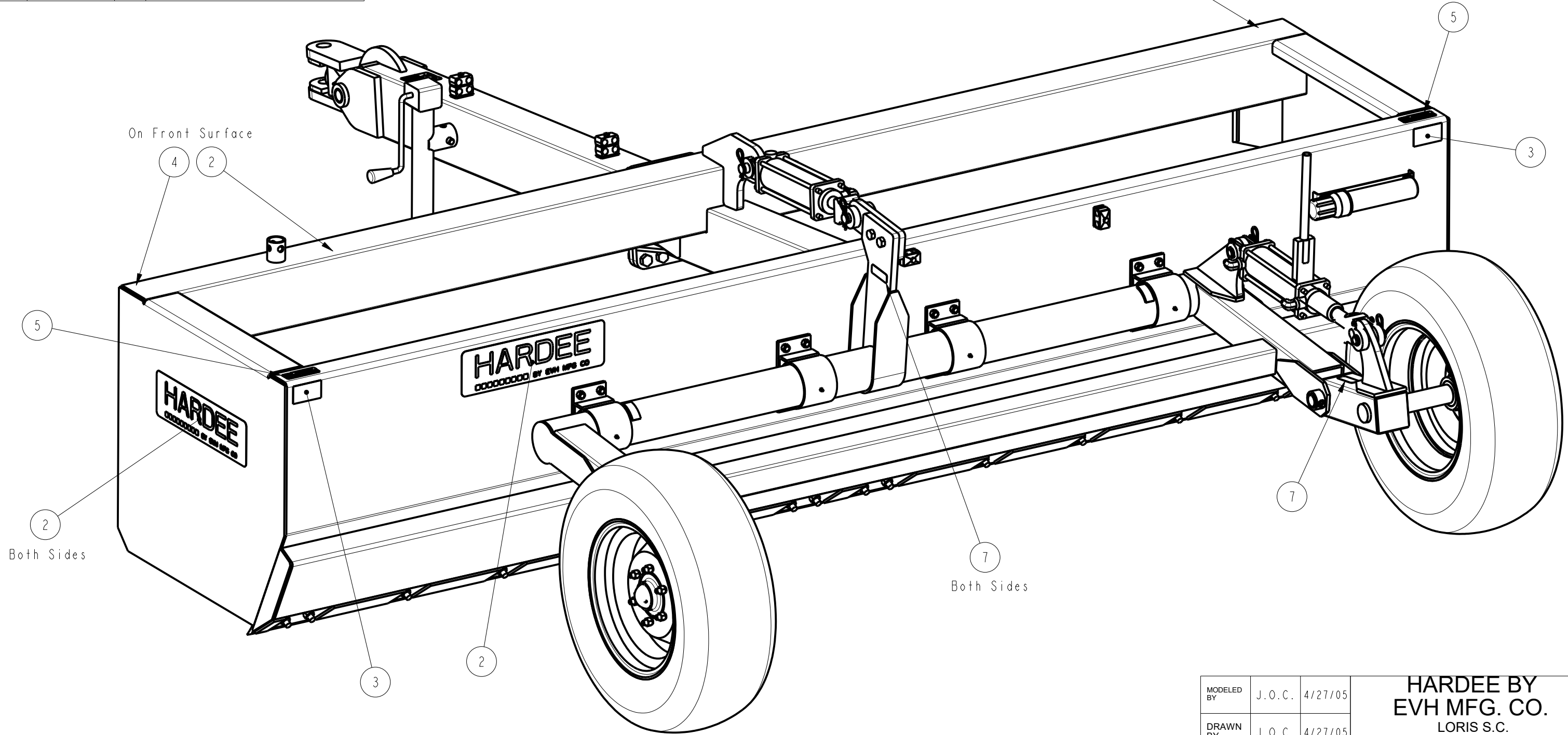
MODELED BY	J.O.C.	4/27/05	HARDEE BY EVH MFG. CO. LORIS S.C.	
DRAWN BY	J.O.C.	4/27/05		
MATERIAL	R.M.N.	N/A	DESCRIPTION	SHEET 1 of 3
Manufactured By: EVH Mfg. Co., LLC			PTS 144 COMPLETE	
DO NOT SCALE	B DWG SIZE	DWG. NO. 40401		

Item	Part Number	Qty.	Description
1	10252	2	COTTER PIN, 3/16" X 2" PLATED
2	11131	4	DECAL, HARDEE BY EVH MFG (5 X 16)
3	15852	2	RED REFLECTOR DECAL
4	15853	2	YELLOW REFLECTOR DECAL
5	11636-4	2	WARNING DECAL (KIT 11636)
6	11636-5	1	DANGER DECAL (KIT 11636)
7	11636-ITEM_3	3	PINCH POINT DECAL (3 X 1)

DWG. NO.	40401			REV.	C
REV	CHANGE	BY	DATE	ECN	
IR	INITIAL RELEASE	J.O.C.	4/27/05	---	
A	CYLINDER MANUFACTURE CHANGE	T.B.B.	6/21/16	1655	
B	CHANGES ARE ON SHEETS 1 & 3.	M.J.Z.	5/28/19	1747	
C	CHANGES ARE ON SHEETS 1 & 3.	M.J.Z.	12/20/24	1789	

Decal Placement Drawing

On Front Surface



On Front Surface

Both Sides

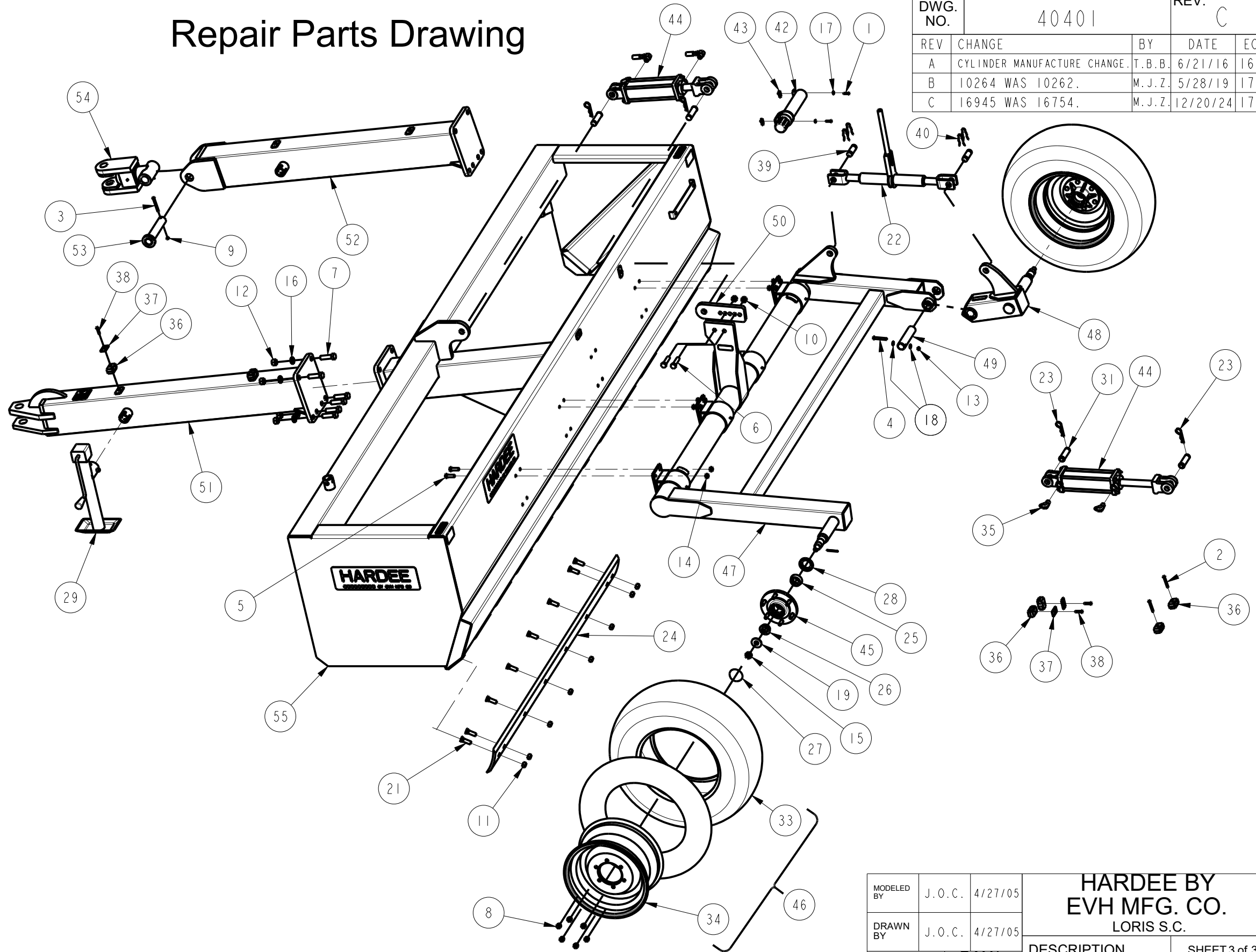
Both Sides

MODELED BY	J.O.C.	4/27/05	HARDEE BY EVH MFG. CO. LORIS S.C.	
DRAWN BY	J.O.C.	4/27/05		
MATERIAL	R.M.N.	N/A	DESCRIPTION	SHEET 2 of 3
Manufactured By: EVH Mfg. Co., LLC			PTS 144 COMPLETE	
Fractional Dimensions: 1/16" Decimal Dim. to Limits Shown			DO NOT SCALE	DWG. NO. 40401 B DWG SIZE

All Dimensions in Inches Unless Otherwise Specified
 Dimensions in [] are in Millimeters
 Tolerance Unless Otherwise Specified
 Angular Dimensions: 1°
 All Holes to be +0 -1/32"

Item	Part Number	Qty.	Description
1	10002	2	HEX BOLT, 1/4-20 X 1 Gr.5 PLATED
2	10014	2	HEX BOLT, 5/16" X 2-1/4" Gr.5 Plated
3	10021	1	HEX BOLT, 5/16" X 3" Gr.5 PLATED
4	10034	1	HEX BOLT, 3/8" x 2-1/2" Gr.5 PLATED
5	10072	16	HEX BOLT, 1/2 x 1 1/2 Gr.5 PLATED
6	10093	2	HEX BOLT, 5/8" X 2-1/2" Gr.5 PLATED
7	10112	6	HEX BOLT, 3/4" X 2-1/2" Gr.5 PLATED
8	10150	12	LUG NUT (1/2" - 20 UNF)
9	10154	1	LOCKNUT, 5/16"-18 PLATED
10	10156	2	Nylon Lock Nut, 5/8" Plated
11	10166	16	LOCKNUT, 5/8"-11 PLATED
12	10167	6	HEX NUT, 3/4" (Gr.5 PLATED)
13	10175	1	LOCKNUT, 3/8"-16 Gr.5 PLATED
14	10176	16	LOCKNUT, 1/2" (Gr.5 PLATED)
15	10179	2	CASTLE NUT, 3/4" Gr.5 Fine Thread
16	10186	6	LOCK WASHER, 3/4" PLATED
17	10200	2	FLATWASHER, 1/4" PLATED
18	10202	2	FLATWASHER, 3/8" PLATED
19	10206	2	FLATWASHER, 3/4" PLATED
20	10252	2	COTTER PIN, 3/16" X 2" PLATED
21	10264	16	Plow Bolt 5/8 x 2 Gr.5 Plated
22	10343	1	RATCHET JACK
23	10391	4	CLIP PIN (Hairpin) 3/16 X 3-1/4"
24	10432	2	72" CUTTING EDGE
25	10437	2	INNER BEARING
26	10438	2	OUTER BEARING
27	10439	2	DUST CAP
28	10440	2	GREASE SEAL
29	10618	1	JACK, 10"
30	10924	2	3/8" X 163" HYD. HOSE (NOT SHOWN)
31	10927	4	1" X 3" Cylinder Pin
32	11842	2	Tube for 9.5L x 15 Tire
33	11843	2	11L X 15 TIRE
34	13277	2	Wheel, 15" x 8", 6 Lug
35	13905	4	ELBOW, 6-M-JIC X 8-M-NPT
36	15291	6	5/8" Tube Clamp Set - Twin, Polypropylene
37	15293	4	COVER PLATE - Twin, Group 2
38	15294	4	HEX BOLT, 5/16"-18 X 1-1/4" Gr.5 Plated
39	15447	2	1" X 2-13/16" PIN
40	15448	4	Clip for 15447 Ratchet Jack Pin - INACTIVE
41	15471	2	3/8" X 228" Hyd. Hose W/ 6-F-JIC X 8-M-NPT
42	15854	1	MANUAL HOLDER CANISTER
43	15860	2	U-NUT, 1/4"-20 UNC
44	16945	2	CYLINDER, 3" X 8"
45	25203	2	WHEEL HUB W/ HARDWARE
46	30324	2	11L X 15 Tire, Tube and Rim
47	40433	1	Tailwheel Frame Weldment
48	40451	1	TILT ARM WELDMENT
49	40456	1	Pin, Tilt Arm
50	40457	1	Cylinder Adjusting Bracket
51	40458	1	Tongue Weldment, Standard
52	40459	1	Tongue Weldment, Swivel
53	40468	1	Pin Weldment, Swivel Hitch
54	40472	1	Swivel Hitch Weldment
55	40490	1	Frame Weldment, PTS 144

Repair Parts Drawing



DWG. NO.	40401			REV.	C
REV	CHANGE	BY	DATE	ECN	
A	CYLINDER MANUFACTURE CHANGE	T.B.B.	6/21/16	1655	
B	10264 WAS 10262.	M.J.Z.	5/28/19	1747	
C	16945 WAS 16754.	M.J.Z.	12/20/24	1789	

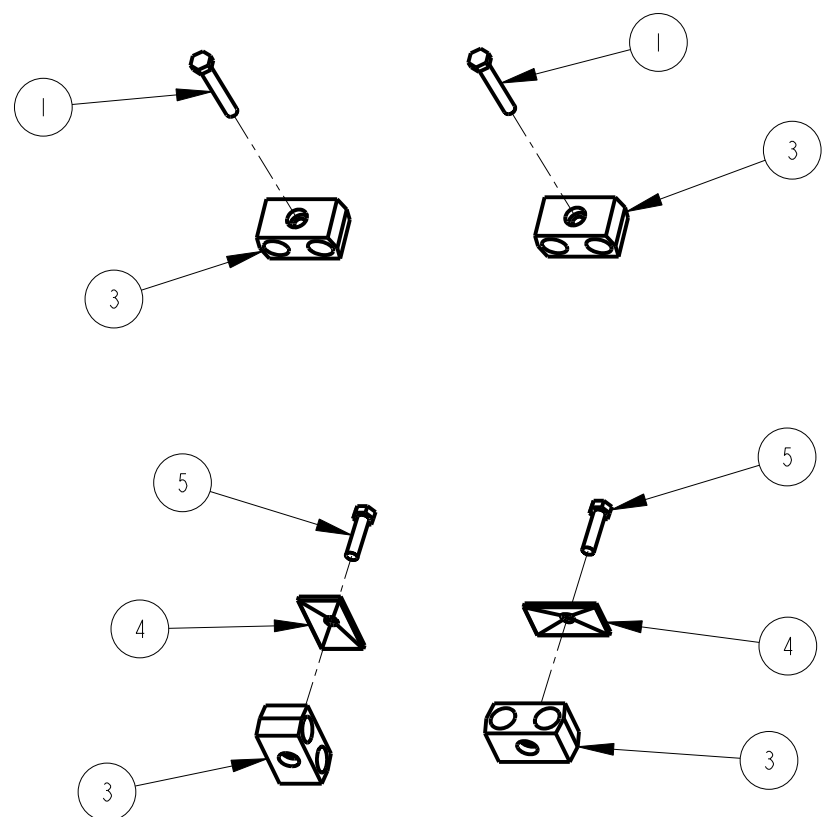
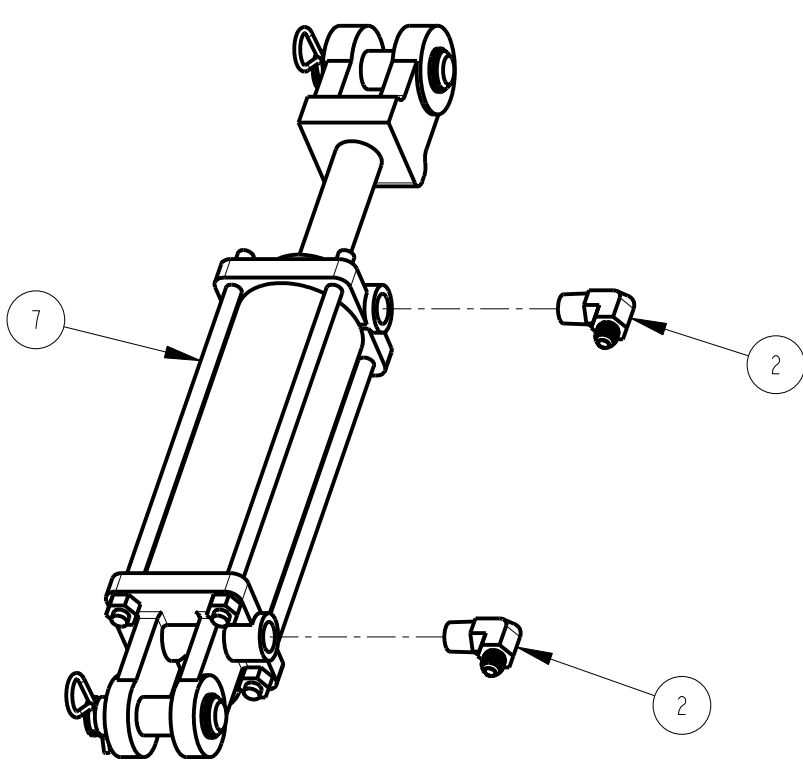
All Dimensions in Inches Unless Otherwise Specified
 Dimensions in [] are in Millimeters
 Tolerance Unless Otherwise Specified
 Fractional Dimensions: 1/16"
 Decimal Dim. to Limits Shown
 Angular Dimensions: 1°
 All Holes to be +0 -1/32"

Drafting Note:
 Balloons 29 & 46 Are Created Objects.

MODELED BY	J.O.C.	4/27/05	HARDEE BY EVH MFG. CO. LORIS S.C.	
DRAWN BY	J.O.C.	4/27/05		
MATERIAL	R.M.N.	N/A	DESCRIPTION	SHEET 3 of 3
Manufactured By: EVH Mfg. Co., LLC			PTS 144 COMPLETE	
DO NOT SCALE	B	DWG. NO.	40401	

Item	Part Number	Qty.	Description
1	10014	2	HEX BOLT, 5/16" X 2-1/4" Gr.5 Plated
2	13905	2	ELBOW, 6-M-JIC X 8-M-NPT
3	15291	4	5/8" Tube Clamp Set - Twin, Polypropylene
4	15293	2	COVER PLATE - Twin, Group 2
5	15294	2	HEX BOLT, 5/16"-18 X 1-1/4" Gr.5 Plated
6	15471	2	3/8" X 228" Hyd. Hose W/ 6-F-JIC X 8-M-NPT
7	16945	1	CYLINDER, 3" X 8"

DWG. NO.	40403			REV.	B
REV	CHANGE	BY	DATE	ECN	
IR	INITIAL RELEASE	J.O.C.	5/19/05	---	
A	CYLINDER MANUFACTURE CHANGE	T.B.B.	6/21/16	1655	
B	16945 WAS 16754.	M.J.Z.	12/20/24	1789	



All Dimensions in Inches Unless Otherwise Specified
 Dimensions in [] are in Millimeters
Tolerance Unless Otherwise Specified
 Fractional Dimensions $\pm 1/16"$ Angular Dimensions $\pm 1^\circ$
 Decimal Dim. to Limits Shown All Holes to be $+0 -1/32"$

MODELED BY	J.O.C.	5/19/05
CHECKED BY	J.O.C.	5/19/05

**HARDEE BY
 EVH MFG. CO.
 LORIS S.C.**

MATERIAL	R.M.N.
	N/A

DESCRIPTION SHEET 1 of 1

TILT CYLINDER OPTION

Manufactured By:
 EVH Mfg. Co., LLC

DO NOT SCALE DWG. NO. **40403**
 A DWG. SIZE