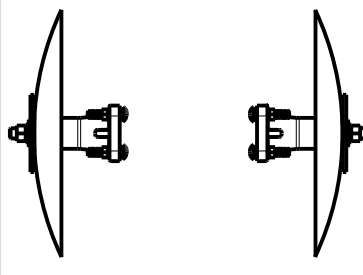


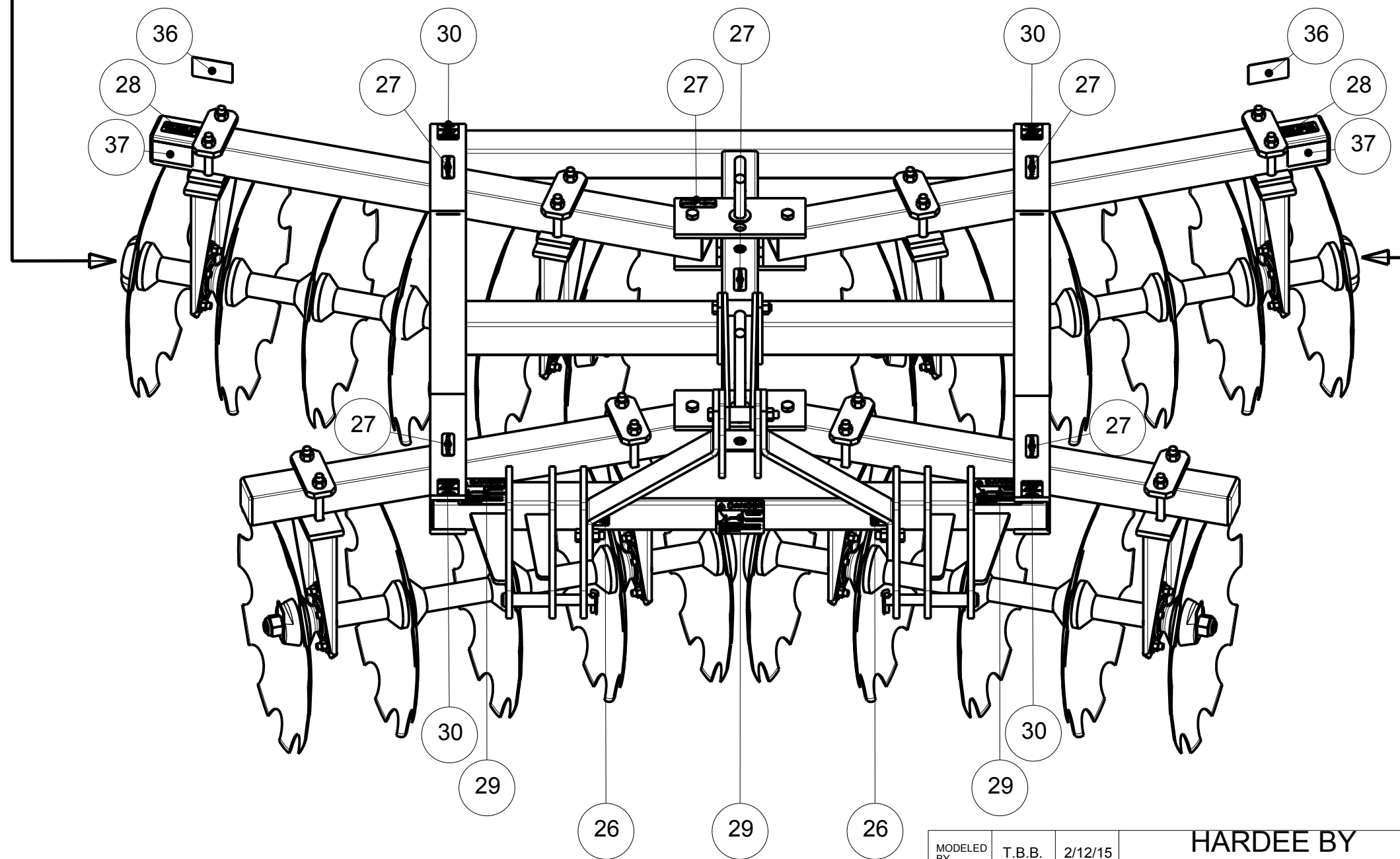
Item	Part Number	Qty.	Description
1	10092	2	Hex Bolt 5/8 x 2 gr.5 plated
2	10097	1	Hex Bolt 5/8"-11 x 4 1/2" gr.5 Plated
3	10098	4	HEX BOLT (5/8"-11 X 5" GR. 5 PLATED)
4	10099	1	Hex Bolt 5/8" X 5 1/2" gr.5 Plated
5	10166	24	Lock Nut 5/8"-11 plated
6	10172	4	Hex Head Lock-Nut (1-1/8")
7	10176	32	1/2" Locknut (Gr.5 Plated)
8	10274	32	Carriage Head Bolt (1/2" X 1-1/4" Gr. 5 Plated)
9	10339	2	Pop Rivet
10	10346	2	3 pt. Snap Pin (Lynch Pin)
11	10464	2	Category I and II Hitch Pin
12	10901	2	Bumper Cap (Front)
13	10902	4	4-1/2" Half Spool
14	10903	8	Sealed Axle Bearing
15	10904	16	Bearing Retainer
16	10905	6	7-1/2" Full Spool
17	10906	8	Bearing Spacer
18	10907	4	Nut Washer
19	10910	22	22" Disc Blade 1-1/8" Hole
20	10918	4	Half Spool
21	10919	4	9" Full Spool
22	10920	2	40" Gang Bolt
23	10921	2	41-1/4" Gang Bolt
24	11032	3	Small Hardee Logo Decal
25	11636	1	DECAL, Landscape & Disc Harrow Kit
26	11636-1	2	WARNING DECAL (KIT 11636)
27	11636-3	6	WARNING DECAL (KIT 11636)
28	11636-4	2	WARNING DECAL (KIT 11636)
29	11636-5	3	DANGER DECAL (KIT 11636)
30	11636-7	4	WARNING DECAL (KIT 11636)
31	11727	1	Serial Number Plate
32	11850	2	Web Site Decal
33	15258	2	Decal For D-20-2220
34	15450	16	Carriage Head Bolt (5/8" X 5" Gr. 5 Plated)
35	15465	4	Tubing Insert, 3" Sqr. X 5-8 Gage
36	15852	2	Red Reflector Decal
37	15853	2	Yellow Reflector Decal
38	60023	8	Clamp Cap
39	60024	4	Gang Tie Plate Weldment
40	60029	1	11" Gang Pin Weldment
41	60037	4	Nut Lock
42	60038	1	15" Gang Pin Weldment
43	60080	2	40" GANG BEAM
44	60081	2	Bumper Cap, Slotted (Rear)
45	60119	2	48" GANG BEAM
46	60124	1	D-20 Main Frame Weldment
47	60126	1	A-Frame Weldment
48	60134	1	A Frame Brace Weldment
49	60275	4	Left Axle Hanger Assembly
50	60276	4	Right Axle Hanger Assembly

OPTION - Extension:
Furrow Filler P/N: 60383



Disc Harrow D20-2222

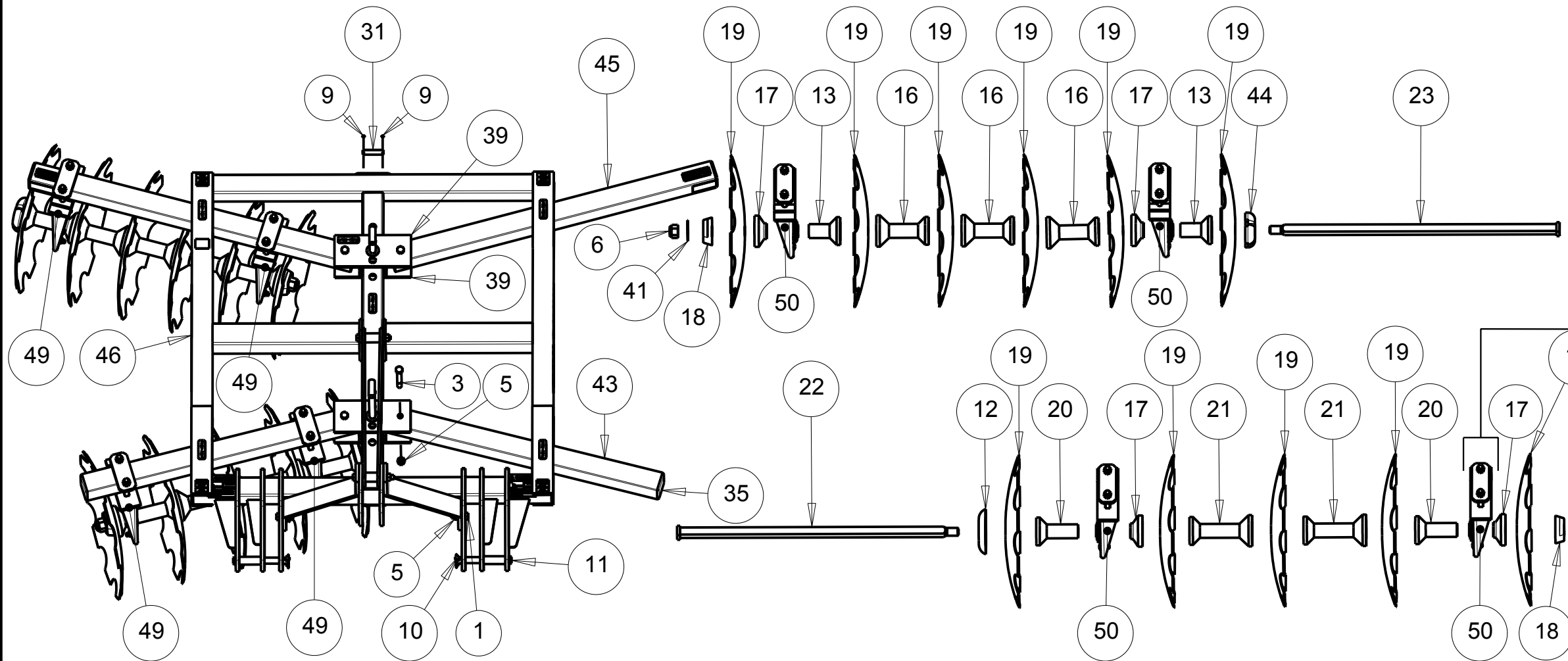
DWG. NO.	60131		REV.	H
REV	CHANGE	BY	DATE	ECN
IR	INITIAL RELEASE	M.J.T.	5/21/99	---
A-G	***These Revisions Can Be Located On Older Drawings If Needed***	N/A	N/A	N/A
H	Re-Drawn & Modeled In Creo 2.0	T.B.B.	1/13/15	1644



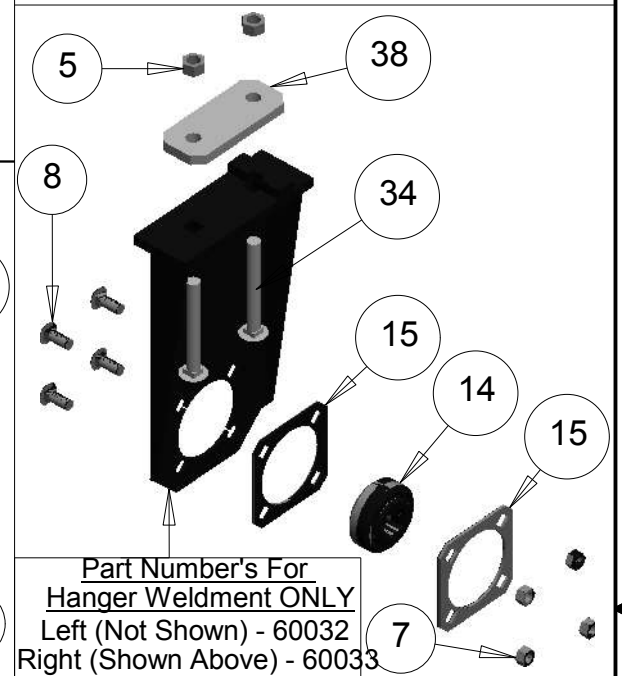
All Dimensions in Inches Unless Otherwise Specified
Dimensions in [] are in Millimeters
Tolerance Unless Otherwise Specified
Fractional Dimensions ± 1/16"
Decimal Dim. to Limits Shown
Angular Dimensions ± 1°
All Holes to be +0 -1/32"

MODELED BY	T.B.B.	2/12/15	HARDEE BY EVH MFG. CO. LORIS S.C.	
CHECKED BY	C.K.N.	2/12/15		
MATERIAL	R.M.N.	N/A	DESCRIPTION	SHEET 1 of 2
Manufactured By: EVH Mfg. Co., LLC			D20-2222 Complete Assembly	
DO NOT SCALE	B	DWG. NO.	60131	

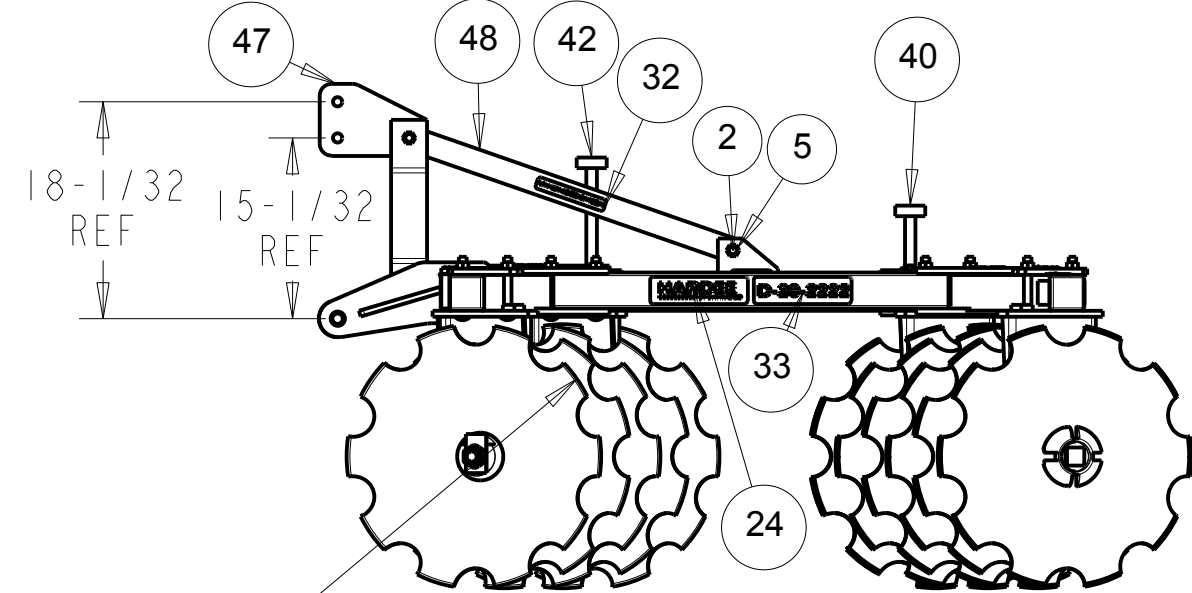
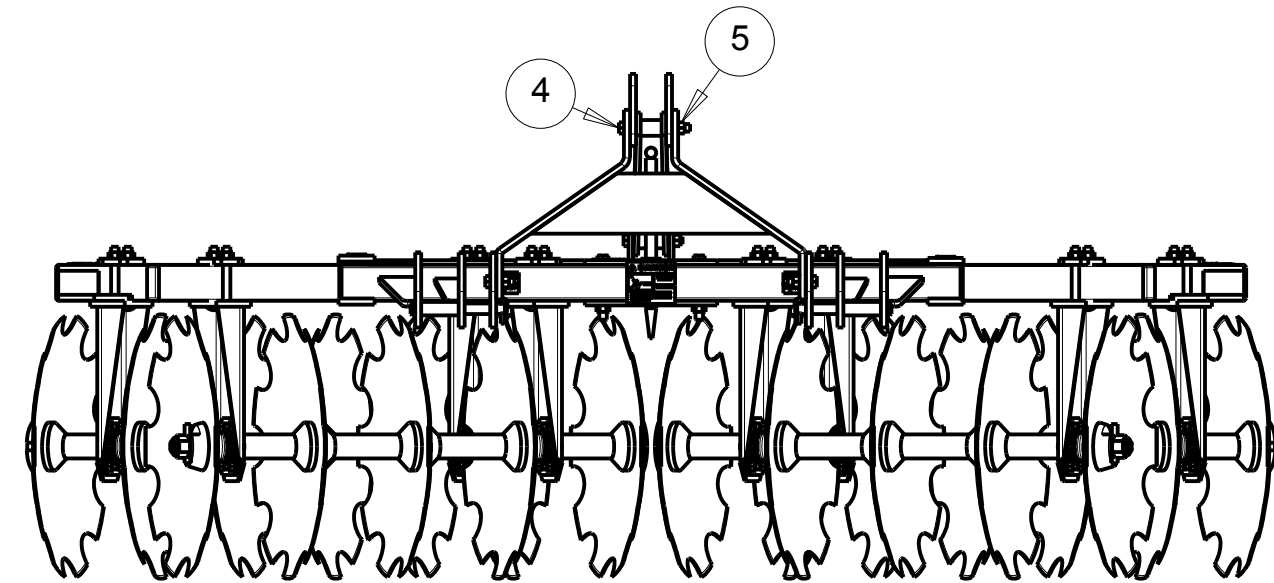
DWG. NO.	60131			REV.	H
REV	CHANGE	BY	DATE	ECN	
IR	INITIAL RELEASE	M.J.T.	5/21/99	---	
A-G	***These Revisions Can Be Located On Older Drawings If Needed***	N/A	N/A	N/A	
H	Re-Drawn & Modeled In Creo 2.0	T.B.B.	1/13/15	1644	



Hanger & Bearing Assembly Breakdown



Part Number's For Hanger Weldment ONLY
 Left (Not Shown) - 60032
 Right (Shown Above) - 60033



Note:
 Blades are staggered along placement of axle
 (Blade are places 90° from the one before it.)

All Dimensions in Inches Unless Otherwise Specified
 Dimensions in [] are in Millimeters
 Tolerance Unless Otherwise Specified
 Fractional Dimensions ± 1/16"
 Decimal Dim. to Limits Shown
 Angular Dimensions ± 1°
 All Holes to be +0 -1/32"

MODELED BY	T.B.B.	2/12/15	HARDEE BY EVH MFG. CO. LORIS S.C.	
CHECKED BY	C.K.N.	2/12/15		
MATERIAL	R.M.N.	N/A	DESCRIPTION	SHEET 2 of 2
Manufactured By: EVH Mfg. Co., LLC			D20-2222 Complete Assembly	
DO NOT SCALE	B	DWG. NO. 60131		