

ITEM NO.	PART NUMBER	QTY REQD.	NOMENCLATURE OR DESCRIPTION
1	24401	1	Deck Weldment
2	24381	1	Tailwheel Fork & Arm Assembly
3	24325	1	Blade Holder Sub Assembly
4	11174	1	Driveshaft
5	10102	1	5/8" X 7" Hex Bolt
6	10330	1	15" Solid Tire & Rim
7	24266	2	Strut
8	20035	1	Floating Linkage Weldment
9	24215	1	Floating Linkage Spacer
10	24386	2	A-Frame
11	11469	1	Retaining Ring (comes w/gearbox)
12	11171	1	1.47:1 Splineless Gearbox
13	10097	1	Hex Bolt (5/8" x 4 1/2" gr.5)
14	20036	1	Spindle Shaft Tube
15	10184	4	1/2" Lockwasher
16	10091	4	Hex Bolt (5/8" X 1 1/2" Gr.5 Plt)
17	10096	1	Hex Bolt (5/8" X 4" Gr.5 Plated)
18	10099	1	Hex Bolt (5/8" X 5-1/2" Gr.5 Plated)
19	11728	1	Fab Hub w/Grafoil Bushings
20	10166	12	Lock Nut (5/8" Plated)
21	10173	1	Castle Nut (comes with Gearbox)
22	10893	2	Tie Strap (18" Long)
23	10185	8	Lock Washer (5/8" Plated)
24	11779	2	Logo & Model # Decal for Panther 60
25	10246	1	Cotter Pin (3/16" X 1-1/4" Plated)
26	10307	2	Category 1 Hitch Pin
27	11727	1	Serial Number Plate
28	10339	2	Rivets for Serial Number Plate
29	10335	.75	Hardee Red Paint
30	10336	0.19	Gear Oil
31	10269	1	Hex Head Cap Screw (1/2"-13 UNC X 3 3/4" Grade 2 Zinc Plated)

All Dimensions in Inches Unless Otherwise Specified
Dimensions in [] are in Millimeters

Tolerances Unless Otherwise Specified
Fractional Dimensions ±1/16" Angular Dimensions ±1"
Decimal Dim. to Limits Shown All holes to be $\begin{matrix} +0 \\ -1/32 \end{matrix}$

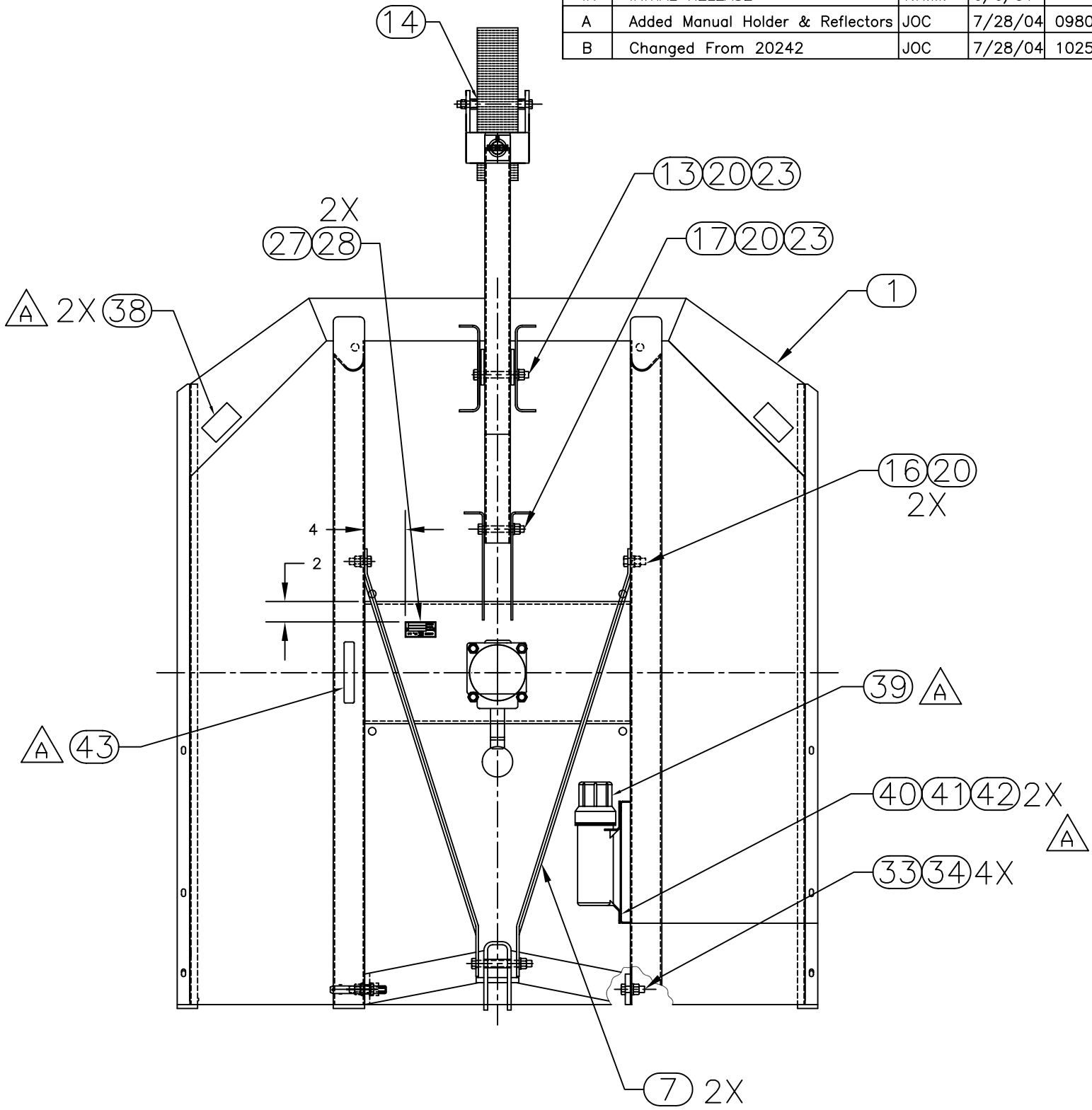
DWG. NO.			REV.	
24400			B	
REV	CHANGE	BY	DATE	ECN
IR	INITIAL RELEASE	T.R.M.	6/6/01	----
A	Added Manual Holder & Reflectors	JOC	7/28/04	0980
B	Changed From 20242	JOC	7/28/04	1025



32	10176	5	Lock Nut (1/2" Plated)
33	10110	4	Hex Bolt (3/4" X 1 1/2" Gr.5 Plated)
34	10168	4	Lock Nut (3/4" Plated)
35	11499	1	PATHFINDER DECAL SHEET
36	20030	2	Tailwheel Adjusting Bracket
37	11010	2	Hardee Logo Decal
38	15852	2	Decal - Red Reflectors
39	15854	1	Manual Holder
40	10002	2	Hex Bolt (1/4" X 1" Gr.5 Plated)
41	15860	2	U-Nut 1/4"-20
42	10200	2	Flat Washer (1/4" Plated)
43	11850	1	Web Site Decal

DRAWN BY	T.R.M.	6/6/01	EVH Manufacturing Co. LORIS S.C.	
CHECKED BY				
MATERIAL	R.M.N.		APPLICATION	OLD PART #
MANUFACTURED BY: HARDEE MFG. CO., LLC			PANTHER 60	
			DESCRIPTION	PANTHER 60 COMPLETE
DO NOT SCALE	A	DWG. NO.	SHEET 1 OF 5 24400	
	DWG SIZE			

DWG. NO.			REV.	
24400			B	
REV	CHANGE	BY	DATE	ECN
IR	INITIAL RELEASE	T.R.M.	6/6/01	---
A	Added Manual Holder & Reflectors	JOC	7/28/04	0980
B	Changed From 20242	JOC	7/28/04	1025



TOP VIEW

All Dimensions in Inches Unless Otherwise Specified
 Dimensions in [] are in Millimeters

Tolerances Unless Otherwise Specified
 Fractional Dimensions $\pm 1/16"$ Angular Dimensions $\pm 1^\circ$
 Decimal Dim. to Limits Shown All holes to be $^{+0}_{-1/32}$

DRAWN BY	T.R.M.	6/6/01
CHECKED BY		
MATERIAL	R.M.N.	
MANUFACTURED BY: HARDEE MFG. CO., LLC		

EVH Manufacturing Co. LORIS S.C.		APPLICATION	OLD PART #
		PANTHER 60	
DESCRIPTION		PANTHER 60 COMPLETE	
DO NOT SCALE	A DWG SIZE	DWG. NO.	SHEET 2 OF 5
		24400	24400

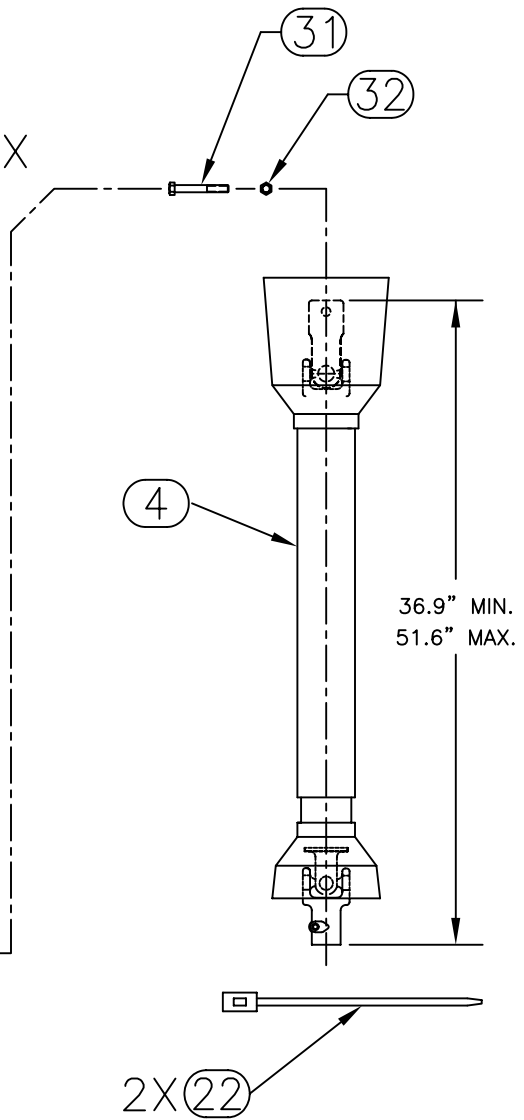
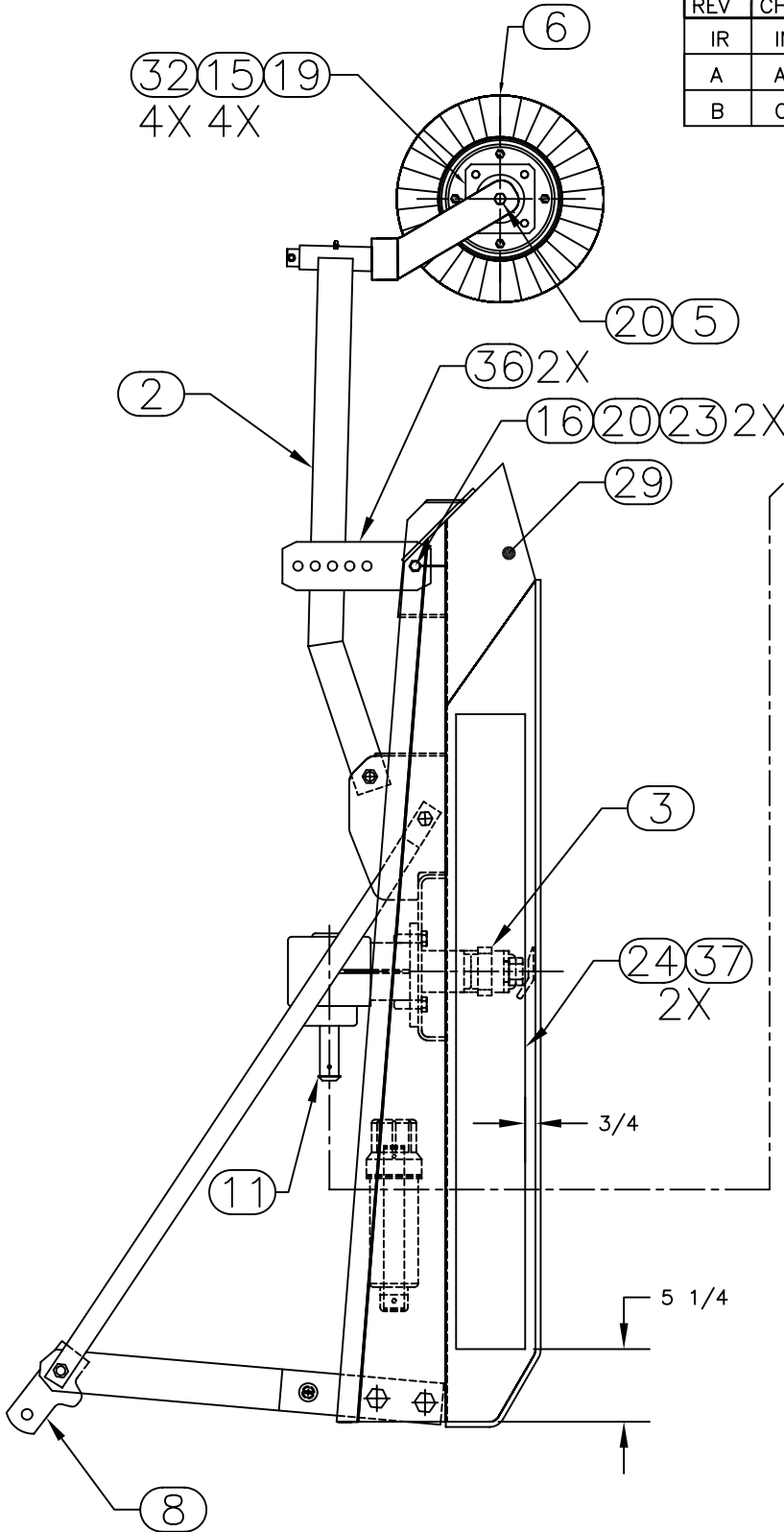
DWG. NO.

24400

REV.

B

REV	CHANGE	BY	DATE	ECN
IR	INITIAL RELEASE	T.R.M.	6/6/01	---
A	Added Manual Holder & Reflectors	JOC	7/28/04	0980
B	Changed From 20242	JOC	7/28/04	1025



SIDE VIEW

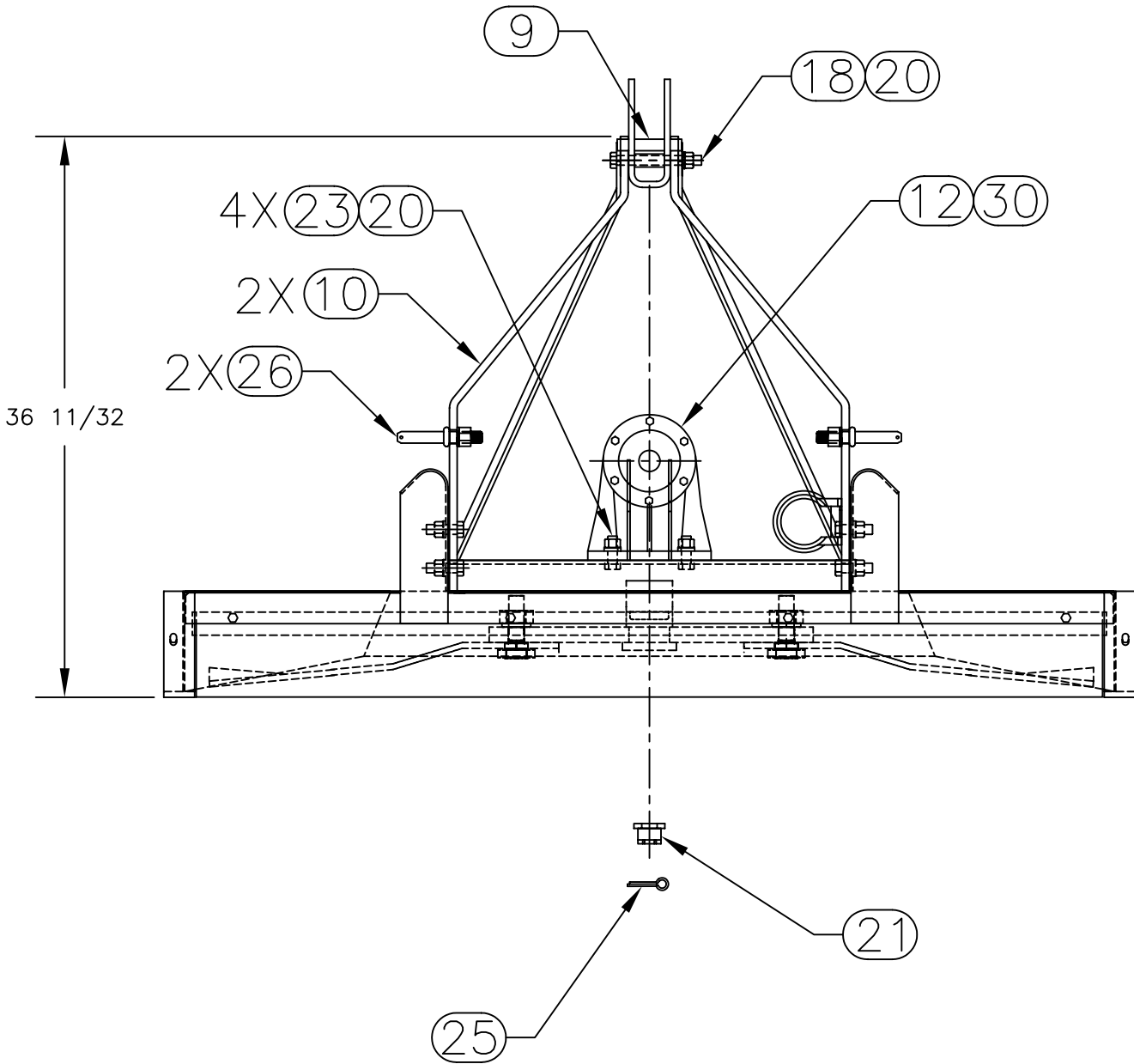
DRAWN BY	T.R.M.	6/6/01	EVH Manufacturing Co. LORIS S.C.	
CHECKED BY				
MATERIAL	R.M.N.		APPLICATION	OLD PART #
MANUFACTURED BY:			PANTHER 60	
HARDEE MFG. CO., LLC			DESCRIPTION	
			PANTHER 60 COMPLETE	
DO NOT SCALE	A	DWG. NO.	SHEET 3 OF 5	
	DWG SIZE	24400		

All Dimensions in Inches Unless Otherwise Specified
 Dimensions in [] are in Millimeters

Tolerances Unless Otherwise Specified
 Fractional Dimensions $\pm 1/16"$
 Decimal Dim. to Limits Shown

Angular Dimensions $\pm 1^\circ$
 All holes to be $+0$
 $-1/32$

DWG. NO.			REV.	
24400			B	
REV	CHANGE	BY	DATE	ECN
IR	INITIAL RELEASE	T.R.M.	6/6/01	---
A	Added Manual Holder & Reflectors	JOC	7/28/04	0980
B	Changed From 20242	JOC	7/28/04	1025



FRONT VIEW

DRAWN BY	T.R.M.	6/6/01	EVH Manufacturing Co. LORIS S.C.	
CHECKED BY				
MATERIAL	R.M.N.		APPLICATION	OLD PART #
MANUFACTURED BY: HARDEE MFG. CO., LLC			PANTHER 60	
			DESCRIPTION	PANTHER 60 COMPLETE
DO NOT SCALE	A	DWG. NO.	SHEET 4 OF 5 24400	
	DWG SIZE			

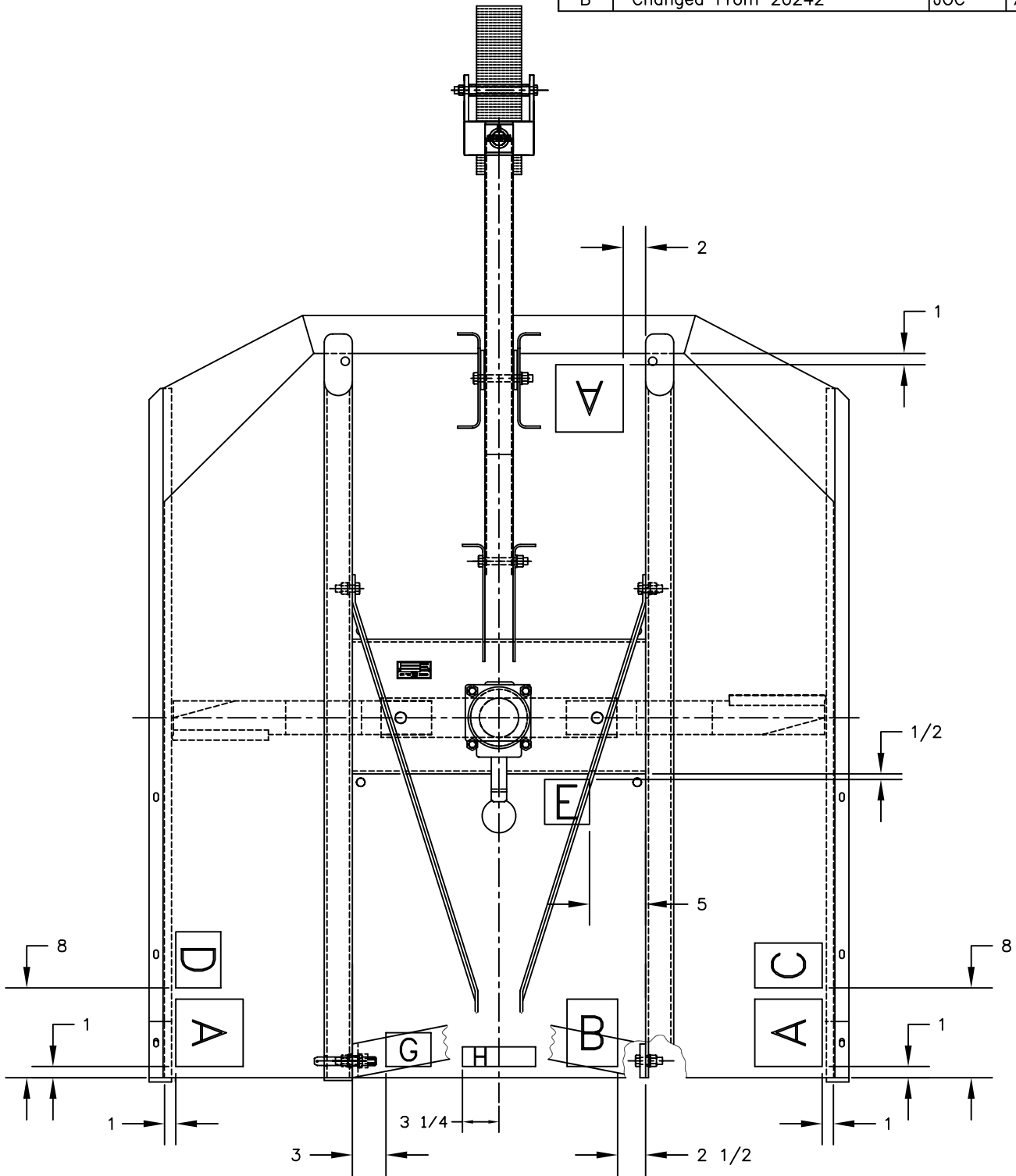
All Dimensions in Inches Unless Otherwise Specified
Dimensions in [] are in Millimeters

Tolerances Unless Otherwise Specified
Fractional Dimensions $\pm 1/16"$ Angular Dimensions $\pm 1^\circ$
Decimal Dim. to Limits Shown All holes to be $^{+0}_{-1/32}$

NOTES:

1. ALL DECALS MAKE UP ITEM 35.

DWG. NO.			REV.	
24400			B	
REV	CHANGE	BY	DATE	ECN
IR	INITIAL RELEASE	T.R.M.	6/6/01	----
A	Added Manual Holder & Reflectors	JOC	7/28/04	0980
B	Changed From 20242	JOC	7/28/04	1025



DRAWN BY	T.R.M.	6/6/01	EVH Manufacturing Co. LORIS S.C.	
CHECKED BY				
MATERIAL	R.M.N.		APPLICATION	OLD PART #
MANUFACTURED BY: HARDEE MFG. CO., LLC			PANTHER 60	
			DESCRIPTION	PANTHER 60
DO NOT SCALE	A	DWG. NO.	SHEET 5 OF 5	
	DWG SIZE	24400		

All Dimensions in Inches Unless Otherwise Specified
Dimensions in [] are in Millimeters

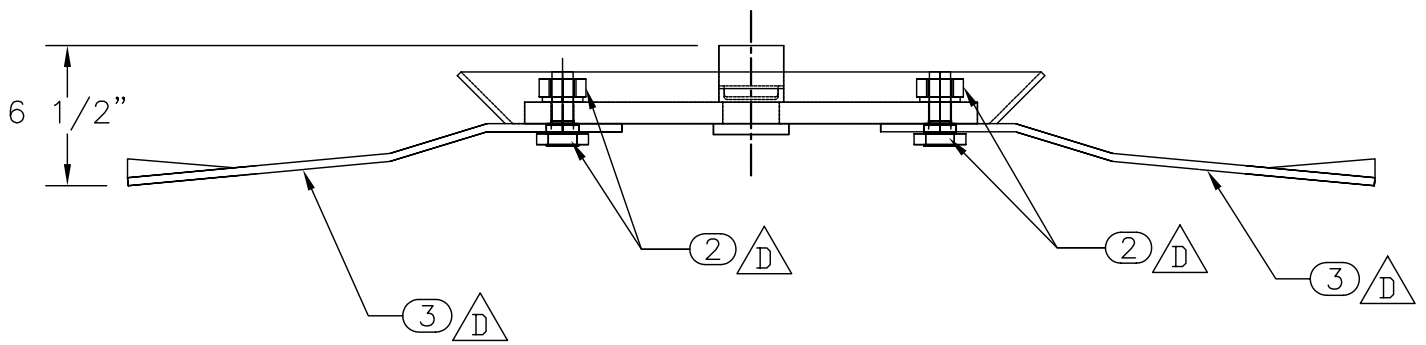
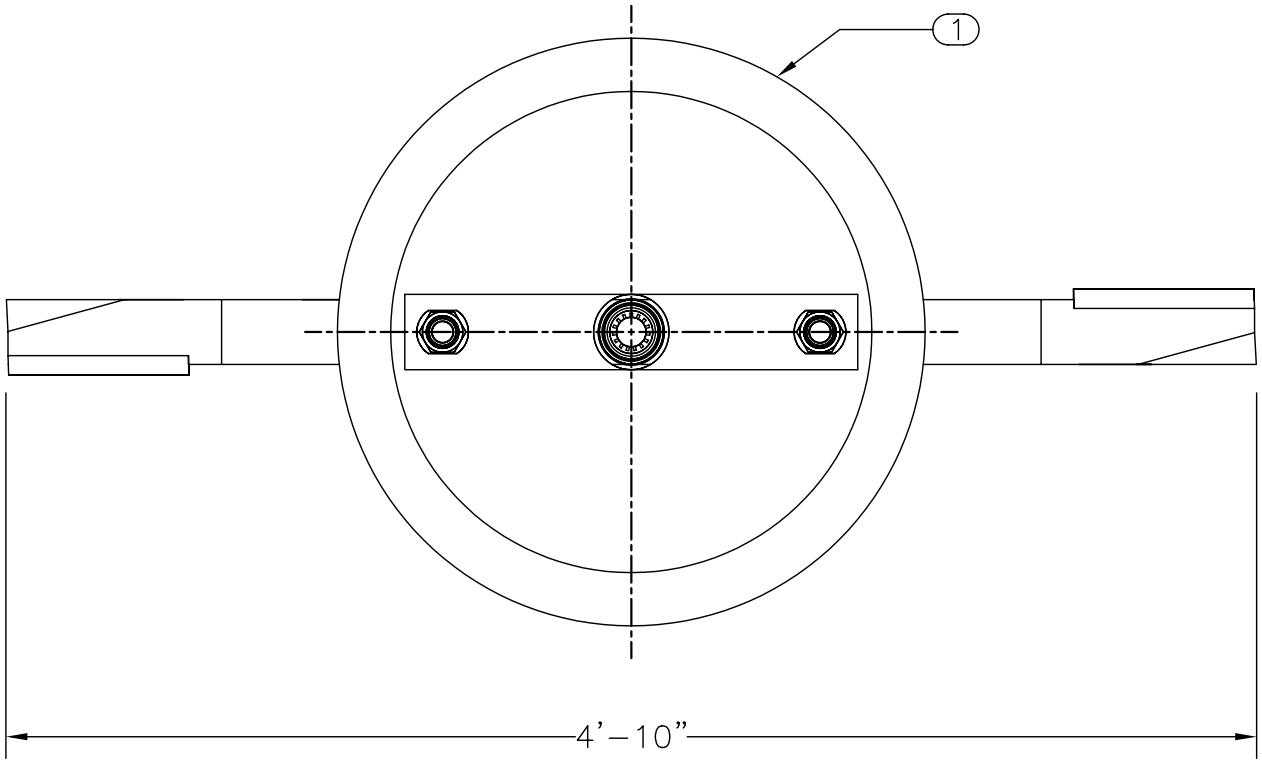
Tolerances Unless Otherwise Specified
Fractional Dimensions $\pm 1/16"$ Angular Dimensions $\pm 1^\circ$
Decimal Dim. to Limits Shown All holes to be $^{+0}_{-1/32}$

DO NOT SCALE A DWG SIZE DWG. NO. 24400 SHEET 5 OF 5

ITEM NO.	PART NUMBER	QTY REQD.	NOMENCLATURE OR DESCRIPTION
1	24311	1	BLADE HOLDER WELDMENT
2	24059	2	BLADE BOLT W/LOCKNUT
3	10308	2	BLADE



DWG. NO.			REV.	
24325			D	
REV	CHANGE	BY	DATE	ECN
IR	INITIAL RELEASE	W.E.S.	7/16/98	---
A	CHANGE HEIGHTH DIMENSION	M.J.T.	11/3/98	0523
B	CHANGE BLADE BOLT	M.J.T.	12/2/98	0534
C	CHANGE BLADE BOLT	T.R.M.	11/30/99	0674
D	REVISED B.O.M. LIST -REVISED CO. HEADER	T.A.S.	2/4/2011	1403



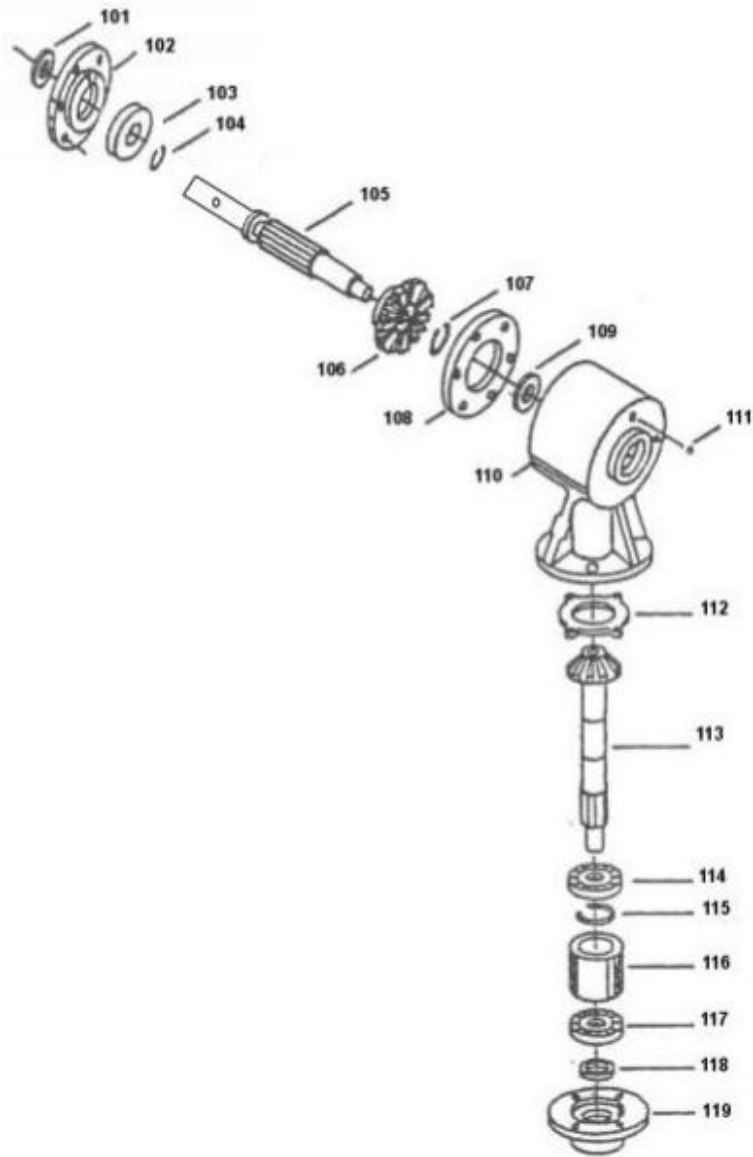
All Dimensions in Inches Unless Otherwise Specified
 Dimensions in [] are in Millimeters

Tolerances Unless Otherwise Specified
 Fractional Dimensions $\pm 1/16$ " Angular Dimensions $\pm 1^\circ$
 Decimal Dim. to Limits Shown All holes to be $\begin{matrix} +0 \\ -1/32 \end{matrix}$

DRAWN BY	J.CREEL	7/16/98	HARDEE EVH MFG CO. LORIS S.C.	
CHECKED BY				
MATERIAL	R.M.N.		APPLICATION	OLD PART #
MANUFACTURED BY: WILLIAMS AG GROUP			P-60	
			DESCRIPTION	P-60 BLADE HOLDER SUB ASSEMBLY
DO NOT SCALE	A	DWG. NO.	24325	
	DWG SIZE			

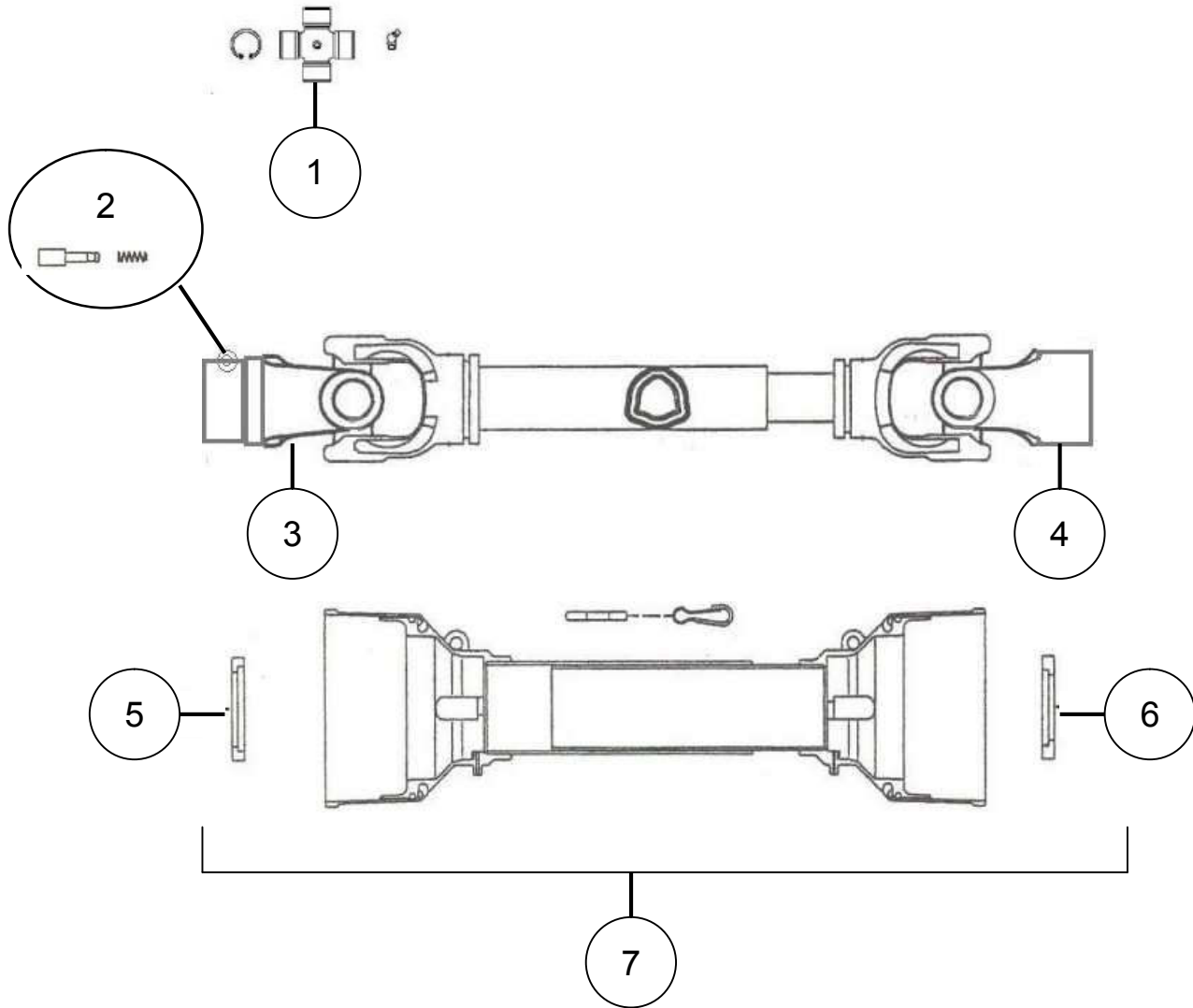
11171 Gearbox

(40 H.P. Gearbox 1:1.47 Ratio)



Key #	Part No.	Part Description	Key #	Part No.	Part Description
101	15688	Input seal	111	15664	Pressure relief plug
102	15689	Face plate	112	15753	Gasket
103	15750	Ball bearing	113	15754	Output shaft w/gear
104	15690	Retaining ring	114	15750	Ball bearing
105	15475	Input shaft	115	15695	Retaining ring
106	15751	Input gear	116	15696	Spacer
107	15695	Retaining ring	117	15750	Ball bearing
108	15691	Shim .004	118	15755	Output seal
109	15692	Ball bearing	119	15697	Bottom cap
110	15752	Housing			

11174 Driveshaft



Key #	Part No.	Description	Qty.
1	15112	Cross Kit (Series 4)	2
2	15579	Pin Kit	1
3	11436	Yoke	1
4	15111	Yoke	1
5	11552	O Bearing 4	1
6	11551	I Bearing 4	1
7	11743	Shield Kit	1