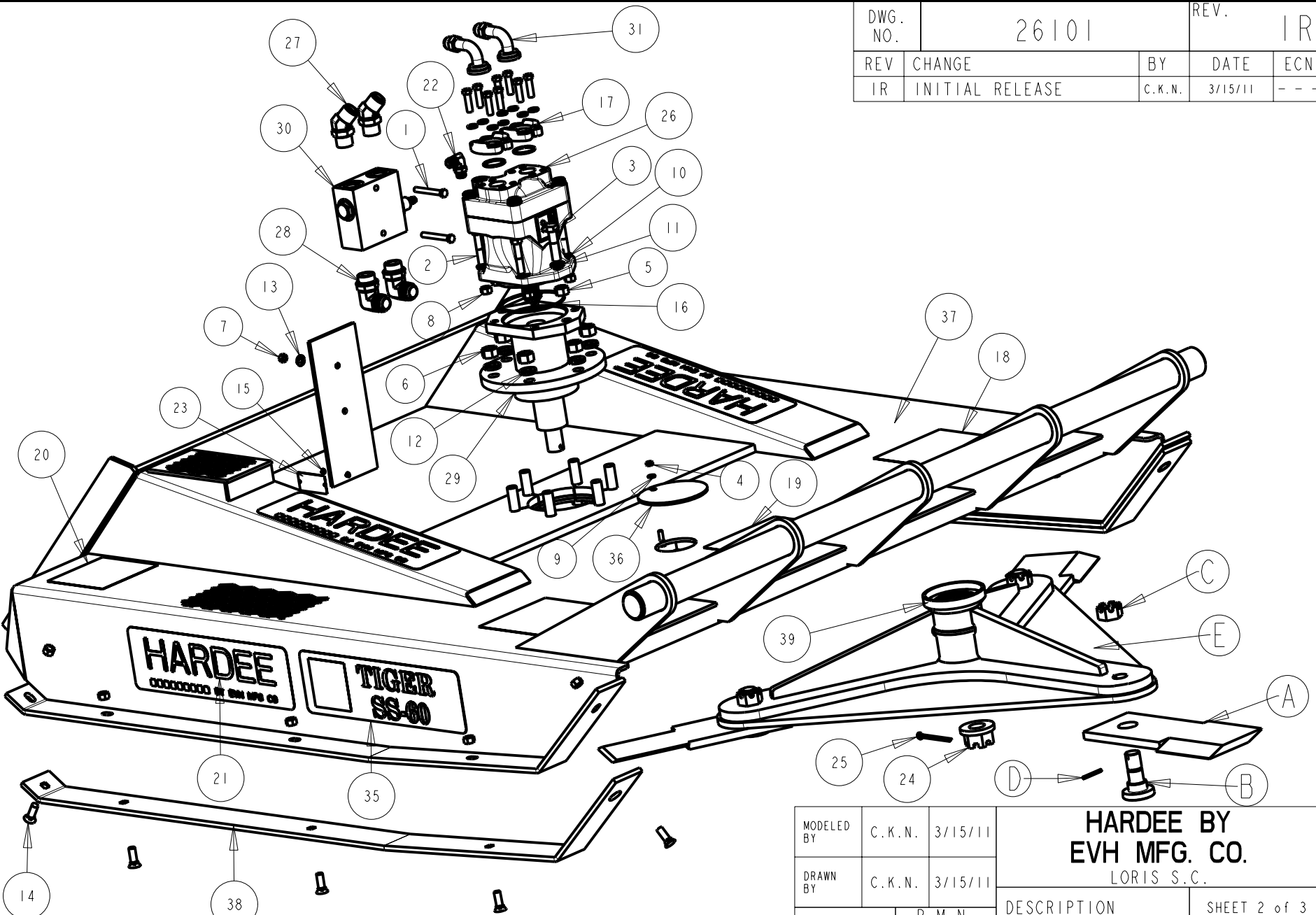


Item	Part Number	Qty.	Description				DWG. NO.	26101		REV.	IR	
1	10035	2	Hex Bolt 3/8" x 3" gr.5 plated	26	16060	1	HYDRAULIC MOTOR	REV	CHANGE	BY	DATE	ECN
2	10074	4	Hex Bolt 1/2 x 2-1/2 gr.5 plated	27	16078	2	45 Deg. Elbow - 1"	IR	INITIAL RELEASE	C.K.N.	3/15/11	- - -
3	10093	2	Hex Bolt 5/8" x 2-1/2" gr.5 plated	28	16191	2	16-M-JIC X 16-M-NPT 90 Deg. Elbow	<u>Parts for 26112</u> <u>Blade Holder with Blades</u>				
4	10154	1	Lock Nut 5/16" Plated	29	16579	1	Hydraulic Motor Housing Assembly	Item	Part Number	Qty.	Description	
5	10166	2	Lock Nut 5/8 plated	30	16592	1	RELIEF-VALVE W/ANTI-CAITATION & CHECK	A	15436	3	BLADE, 5/8" X 5"	
6	10168	6	3/4" Locknut (Gr.5 Plated)	31	16632	2	Flange Adaptor 90 Deg.	B	15437	3	Blade Bolt for 5/8" Thick Blades	
7	10175	2	3/8" Locknut (Gr.5 Plated)	32	16633	2	Hose, Valve-to-Motor, TIGER SS-60	C	16515	3	HEX NUT, Slotted, 1-1/8"-12	
8	10176	14	1/2" Locknut (Gr.5 Plated)	33	16634	2	Hose, Machine-to-Valve, TIGER SS-60	D	16517	3	COILED SPRING PIN, STEEL 3/16 X 2", Plain	
9	10181	1	Lockwasher 5/16" plated	34	16635	1	Hose, Case Drain, TIGER SS-60	E	26113	1	Blade Holder Weldment, TIGER SS-60	
10	10184	4	Lockwasher 1/2 plated	35	16640	2	Decal, TIGER SS-60					
11	10185	2	Lockwasher 5/8" Plated	36	20031	1	Access Cover					
12	10186	6	Lockwasher 3/4" Plated	37	26110	1	DECK WELDMENT - TIGER SS-60					
13	10202	2	3/8" Flatwasher (Plated)	38	26111	2	SLIDE - REPLACEABLE - SKID STEER					
14	10260	10	Plow Bolt 1/2" x 1-1/2" Gr.5 Plated	39	26112	1	BLADE HOLDER WITH BLADES, TIGER SS-60					
15	10339	2	Rivet For Serial Number Plate									
16	10388	1	O-Ring									
17	10872	2	Pressure Flange SET									
18	11001	2	Decal, Danger - Rotating Blades									
19	11002	1	Decal, Danger - Keep Clear									
20	11004	2	Decal, Caution - Operator's Manual									
21	11131	4	Large Hardee Logo Decal									
22	11505	1	8-M-ORB X 8-M-JIC 90 DEG.ELBOW									
23	11727	1	Serial Number Plate									
24	15481	1	Slotted Hex Nut 1-1/4" -18UNEF									
25	15968	1	Cotter Pin 1/4" x 3"									
				MODELED BY C.K.N. 3/15/11			HARDEE BY EVH MFG. CO. LORIS S.C.					
				DRAWN BY C.K.N. 3/15/11								
				MATERIAL R.M.N. N/A			DESCRIPTION		SHEET 1 of 3			
				Tolerance Unless Otherwise Specified Fractional Dimensions ± 1/16" Angular Dimensions ± 1° Decimal Dim. to Limits Shown All Holes to be +0 -1/32"			TIGER SS-60 Skid Steer, Complete Manufactured By: EVH Mfg. Co., LLC					
							DO NOT SCALE	A DWG. SIZE	DWG. NO. 26101			



DWG. NO.	26101		REV.	IR	
REV	CHANGE	BY	DATE	ECN	
IR	INITIAL RELEASE	C.K.N.	3/15/11	---	

All Dimensions in Inches Unless Otherwise Specified
 Dimensions in [] are in Millimeters
 Tolerance Unless Otherwise Specified
 Fractional Dimensions $\pm 1/16"$ Angular Dimensions $\pm 1^\circ$
 Decimal Dim. to Limits Shown All Holes to be $+0 -1/32"$

MODELED BY	C.K.N.	3/15/11	HARDEE BY EVH MFG. CO. LORIS S.C.		
DRAWN BY	C.K.N.	3/15/11			
MATERIAL	R.M.N. N/A		DESCRIPTION	SHEET 2 of 3	
Manufactured By: EVH Mfg. Co., LLC			TIGER SS-60 Skid Steer, Complete		
DO NOT SCALE	A DWG SIZE	DWG. NO.	26101		

Case Drain
Hose P/N 16635

Pressure Hose
P/N 16634

Return Hose
P/N 16634

Relief Valve set to 2700 PSI
P/N 16611

Valve to Motor Hoses
P/N 16633

Check Valve
P/N 16612

A1

B1

B2

A2

HYDRAULIC SCHEMATIC

DWG. NO.	26101		REV.		IR
REV	CHANGE	BY	DATE	ECN	
IR	INITIAL RELEASE	C.K.N.	3/15/11	---	

MODELED BY	C.K.N.	3/15/11	HARDEE BY EVH MFG. CO. LORIS S.C.		
DRAWN BY	C.K.N.	3/15/11			
MATERIAL	R.M.N. N/A		DESCRIPTION	SHEET 3 of 3	
Manufactured By: EVH Mfg. Co., LLC			Tiger SS-60 Skid Steer, Complete		
DO NOT SCALE	A DWG SIZE	DWG. NO.	26101		

All Dimensions in Inches Unless Otherwise Specified
Dimensions in [] are in Millimeters
Tolerance Unless Otherwise Specified
Fractional Dimensions ± 1/16"
Decimal Dim. to Limits Shown
Angular Dimensions ± 1°
All Holes to be +0 -1/32"