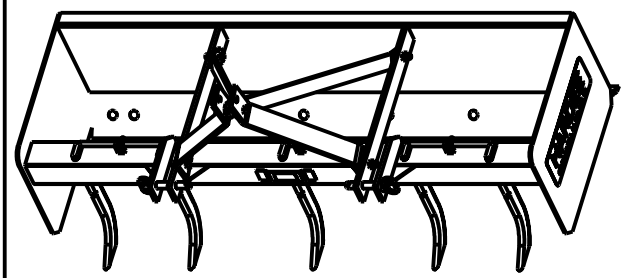
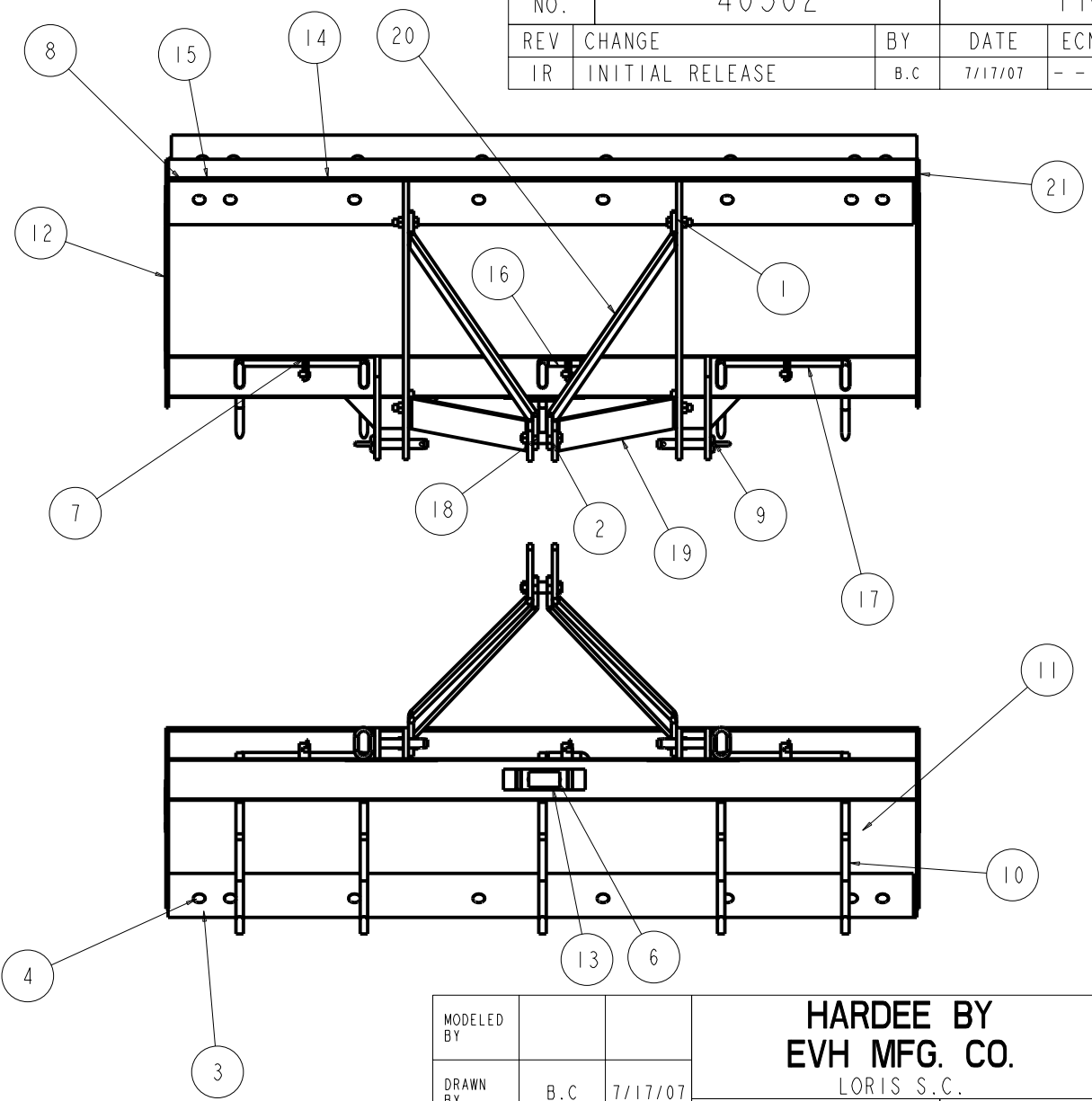


Item	Part Number	Qty.	Description
1	10092	4	Hex Bolt 5/8 x 2 gr.5 plated
2	10095	1	Hex Bolt 5/8" x 3 1/2" gr.5 Plated
3	10166	21	Lock Nut 5/8 plated
4	10262	16	Plow Bolt 5/8 x 1 1/2 Gr.5 Plated
5	10335	1	Hardee Red Paint
6	10339	2	Rivet For Serial Number Plate
7	10346	3	3 pt. Snap Pin (Lynch Pin)
8	10432	2	72 Cutting Edge
9	10469	2	Hitch Pin
10	10485	5	Scarifier
11	11010	1	Large Hardee Logo Decal
12	11131	2	Large Hardee Logo Decal
13	11727	1	Serial Number Plate
14	11858	1	Hardee Logo Decal
15	15852	2	Red Reflector Decal
16	40162	1	Scarifier Lock
17	40163	2	Scarifier Lock
18	40518	1	ES Hitch Spacer
19	40519	2	ES A-Frame (Clevis Style)
20	40520	2	ES Strut (Clevis Style)
21	40526	1	ES-72 Frame Weldment

DWG. NO.	40502			REV.	IR
REV	CHANGE	BY	DATE	ECN	
IR	INITIAL RELEASE	B.C	7/17/07	--	



All Dimensions in Inches Unless Otherwise Specified
 Dimensions in [] are in Millimeters
 Tolerance Unless Otherwise Specified
 Fractional Dimensions ± 1/16" Angular Dimensions ± 1°
 Decimal Dim. to Limits Shown All Holes to be +0 -1/32"

MODELED BY			HARDEE BY EVH MFG. CO. LORIS S.C.		
DRAWN BY	B.C	7/17/07			
MATERIAL	R.M.N. N/A		ES-72 ASSEMBLY		
Manufactured By: EVH Mfg. Co., LLC			DO NOT SCALE	A DWG. SIZE	DWG. NO. 40502