

Item	Part Number	Qty.	Description				
1	10035	2	Hex Bolt 3/8" x 3" gr.5 plated	26	16634	2	Hose, Machine-to-Valve, TIGER SS-60
2	10075	4	Hex Bolt 1/2 x 3 gr.5 plated	27	16640	2	Decal, TIGER SS-60
3	10154	1	LOCKNUT, 5/16"-18 PLATED	28	16775	2	ELBOW, Swivel Nut - 3/4" 90 Deg.,
4	10168	6	LOCKNUT, 3/4"-10 Gr.5 PLATED	29	16850	1	Hydraulic Motor (Low Flow)
5	10175	2	LOCKNUT, 3/8"-16 Gr.5 PLATED	30	20031	1	ACCESS COVER
6	10176	14	LOCKNUT, 1/2" (Gr.5 Plated)	31	26109	1	Motor Spacer - Low Flow SS
7	10181	1	LOCK WASHER, 5/16" PLATED	32	26110	1	DECK WELDMENT - TIGER SS-60
8	10184	4	LOCKWASHER, 1/2" PLATED	33	26111	2	SLIDE - REPLACEABLE - SKID STEER
9	10186	6	LOCK WASHER, 3/4" PLATED	34	26112	1	BLADE HOLDER WITH BLADES, TIGER SS-60
10	10202	2	FLATWASHER, 3/8" PLATED				
11	10260	10	PLOW BOLT, 1/2" X 1-1/2" Gr.5 PLATED				
12	10339	2	POP RIVET				
13	11001	2	Decal, Danger - Rotating Blades				
14	11002	1	Decal, Danger - Keep Clear				
15	11004	2	Decal, Caution - Operator's Manual				
16	11131	4	DECAL, HARDEE BY EVH MFG (5 X 16)				
17	11727	1	SERIAL NUMBER PLATE				
18	15481	1	Slotted Hex Nut 1-1/4" -18UNEF				
19	15968	1	COTTER PIN, 1/4" x 3"				
20	16012	2	Fitting, 12 F50X-S Strt. Thread Conn.				
21	16078	2	45 Deg. Elbow - 1"				
22	16086	2	REDUCER, 37 Deg. Flare (16-12 TRTXN-S)				
23	16191	2	16-M-JIC X 16-M-ORB 90 Deg. Elbow				
24	16579	1	HYDRAULIC MOTOR HOUSING ASM				
25	16592	1	RELIEF-VALVE W/ANTI-CAVITATION & CHECK				

DWG. NO.	26100			REV.	A
REV	CHANGE	BY	DATE	ECN	
IR	INITIAL RELEASE	C.K.N.	3/15/11	---	
A	Add 26109 remove 10388	C.K.N.	6/16/23	1815	

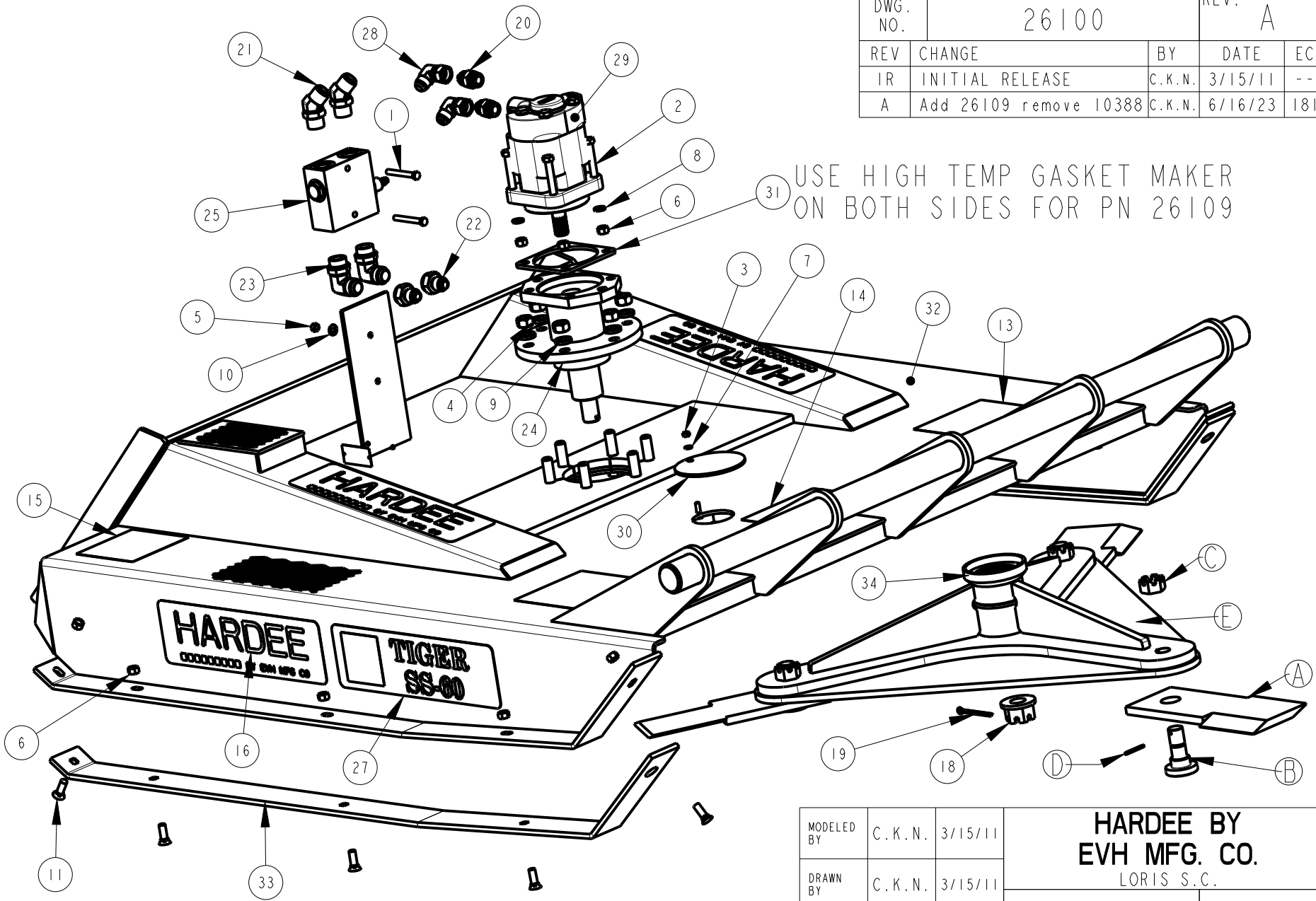
Parts for 26112 Blade Holder with Blades			
Item	Part Number	Qty.	Description
A	15436	3	BLADE, 5/8" X 5"
B	15437	3	Blade Bolt for 5/8" Thick Blades
C	16515	3	HEX NUT, Slotted, 1-1/8"-12
D	16517	3	COILED SPRING PIN, STEEL 3/16 X 2", Plain
E	26113	1	Blade Holder Weldment, TIGER SS-60

MODELED BY	C.K.N.	3/15/11	<b>HARDEE BY EVH MFG. CO.</b> LORIS S.C.	
DRAWN BY	C.K.N.	3/15/11		
MATERIAL	R.M.N.	N/A	DESCRIPTION	SHEET 1 of 3
Manufactured By:			TIGER SS-60 (Low Flow) (16-25GPM) Skid Steer, Complete	
EVH Mfg. Co., LLC			DO NOT SCALE	DWG. NO. 26100

All Dimensions in Inches Unless Otherwise Specified  
Dimensions in [ ] are in Millimeters  
Tolerance Unless Otherwise Specified  
Fractional Dimensions ± 1/16" Angular Dimensions ± 1°  
Decimal Dim. to Limits Shown All Holes to be +0 -1/32"

DWG. NO.	26100		REV. A	
REV	CHANGE	BY	DATE	ECN
IR	INITIAL RELEASE	C.K.N.	3/15/11	---
A	Add 26109 remove 10388	C.K.N.	6/16/23	1815

USE HIGH TEMP GASKET MAKER ON BOTH SIDES FOR PN 26109



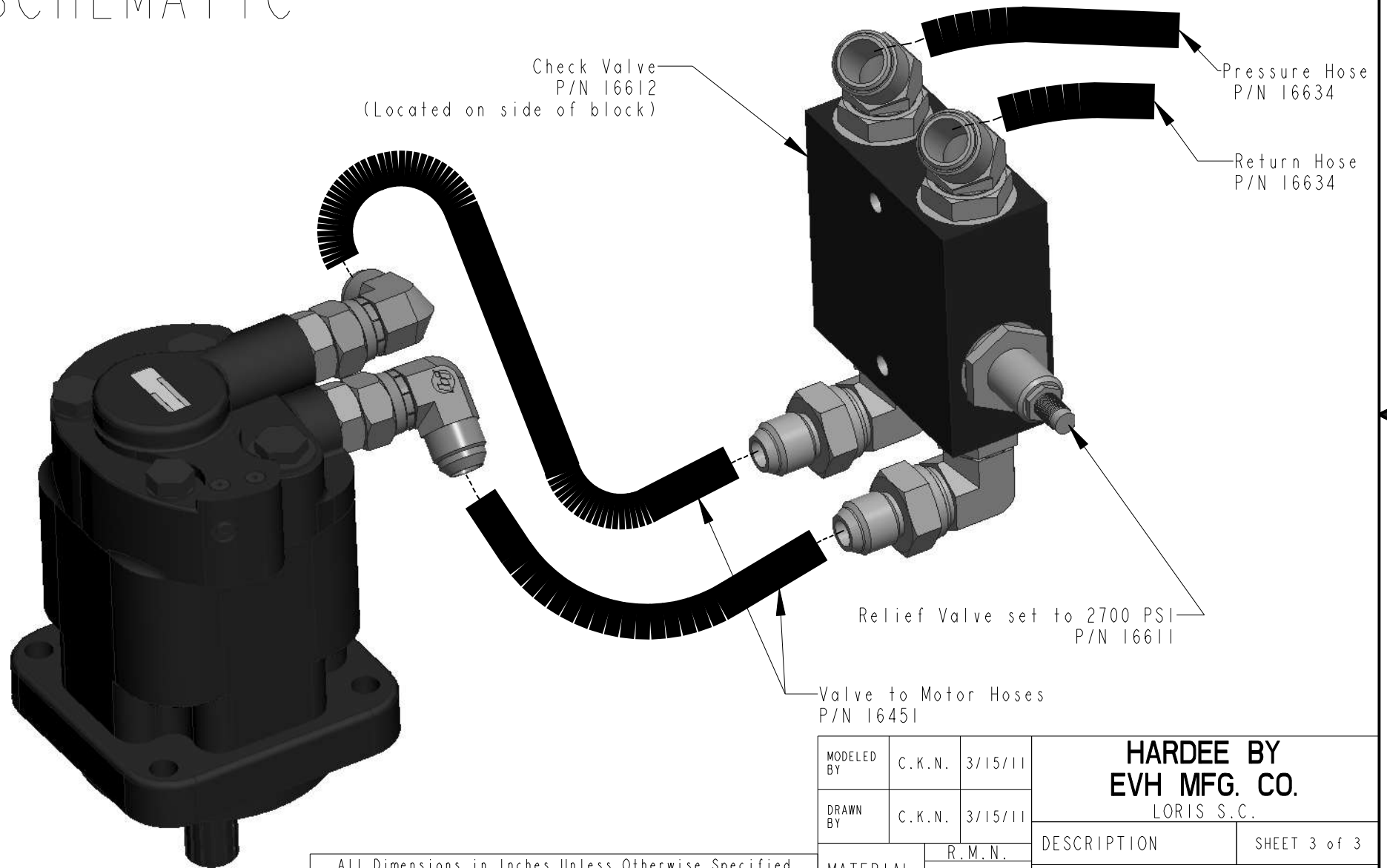
All Dimensions in Inches Unless Otherwise Specified  
 Dimensions in [ ] are in Millimeters  
 Tolerance Unless Otherwise Specified  
 Fractional Dimensions ± 1/16" Angular Dimensions ± 1°  
 Decimal Dim. to Limits Shown All Holes to be +0 -1/32"

MODELED BY	C.K.N.	3/15/11
DRAWN BY	C.K.N.	3/15/11
MATERIAL	R.M.N. N/A	
Manufactured By: EVH Mfg. Co., LLC		

<b>HARDEE BY EVH MFG. CO. LORIS S.C.</b>	
DESCRIPTION	SHEET 2 of 3
TIGER SS-60 (Low Flow) (16-25GPM) Skid Steer, Complete	
DO NOT SCALE	DWG. NO. 26100
A	DWG. SIZE

# HYDRAULIC SCHEMATIC

DWG. NO.	26100			REV.	A
REV	CHANGE	BY	DATE	ECN	
A	Add 26109 remove 10388	C.K.N.	6/16/23	1815	



All Dimensions in Inches Unless Otherwise Specified Dimensions in [ ] are in Millimeters	
Tolerance Unless Otherwise Specified	
Fractional Dimensions $\pm 1/16"$	Angular Dimensions $\pm 1^\circ$
Decimal Dim. to Limits Shown	All Holes to be $+0 -1/32"$

MODELED BY	C.K.N.	3/15/11	<b>HARDEE BY EVH MFG. CO.</b> LORIS S.C.	
DRAWN BY	C.K.N.	3/15/11		
MATERIAL	R.M.N.	N/A	DESCRIPTION	SHEET 3 of 3
Manufactured By:			TIGER SS-60 (Low Flow) (16-25GPM) Skid Steer, Complete	
DO NOT SCALE	A	DWG. NO.	26100	
	DWG SIZE			