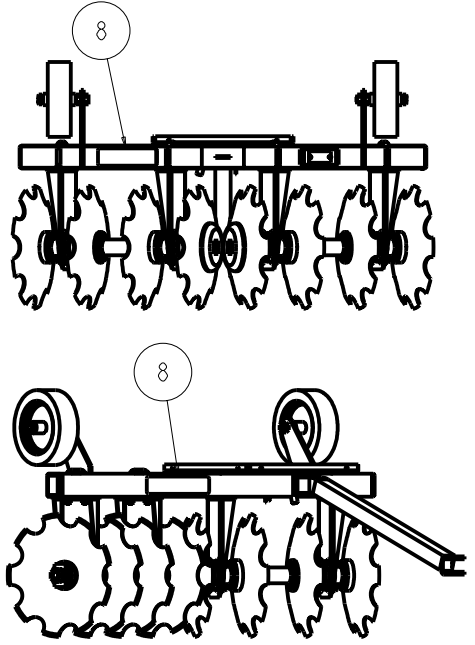
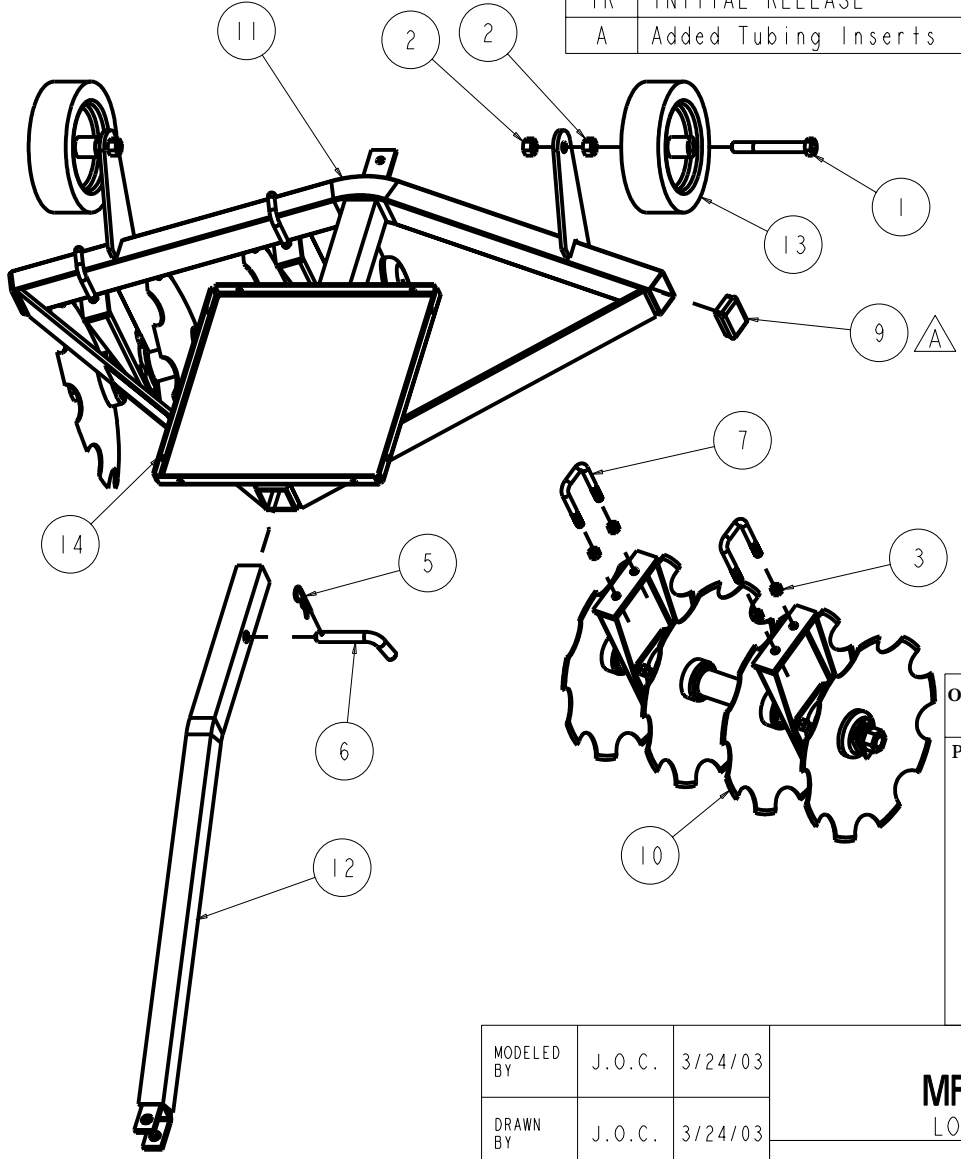


Item	Part Number	Qty.	Description
1	10119	2	Hex Bolt (3/4" X 6" Gr. 5 Plated)
2	10168	4	3/4"-10 Locknut (Gr.5 Plated)
3	10176	8	1/2" Locknut (Gr.5 Plated)
4	10335	1	Hardee Red Paint - (Not Shown)
5	10420	1	Clip Pin (3/16 x 3 3/4)
6	10445	1	3/4 Dia. Bent Hitch Pin
7	10855	4	U-Bolt, PLATED Sq 3-1/2" x 4"x 1/2" Dia
8	11032	2	Small Hardee Logo Decal
9	15464	2	Tubing Insert, 3" X 2" X 10 Gage
10	60504	2	D-10-1616 Gang Assembly
11	60751	1	D-3 Frame Weldment
12	60756	1	Tongue Weldment
13	60761	2	D-3 Wheel
14	60765	1	D-3 Weight Bracket Weldment

DWG. NO.	60750			REV.	A
REV	CHANGE	BY	DATE	ECN	
IR	INITIAL RELEASE	J.O.C.	3/24/03	--	
A	Added Tubing Inserts	J.O.C.	4/12/05	1057	



OPTIONAL - WEIGHT BRACKET PLATE
PART#- 60765

All Dimensions in Inches Unless Otherwise Specified
Dimensions in [] are in Millimeters
Tolerance Unless Otherwise Specified
Fractional Dimensions ± 1/16" Angular Dimensions ± 1°
Decimal Dim. to Limits Shown All Holes to be +0 -1/32"

MODELED BY	J.O.C.	3/24/03	EVH MFG. CO. LORIS S.C.		
DRAWN BY	J.O.C.	3/24/03			
MATERIAL	R.M.N. N/A		DESCRIPTION	SHEET 1 of 1	
Manufactured By: EVH Mfg. Co., LLC			D-3-816 Assembly	DO NOT SCALE	A
			DWG. NO.	60750	