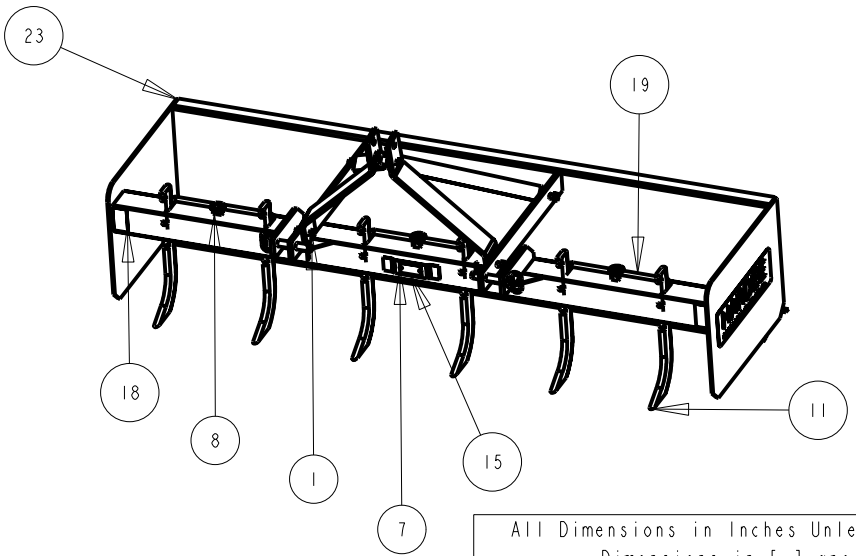
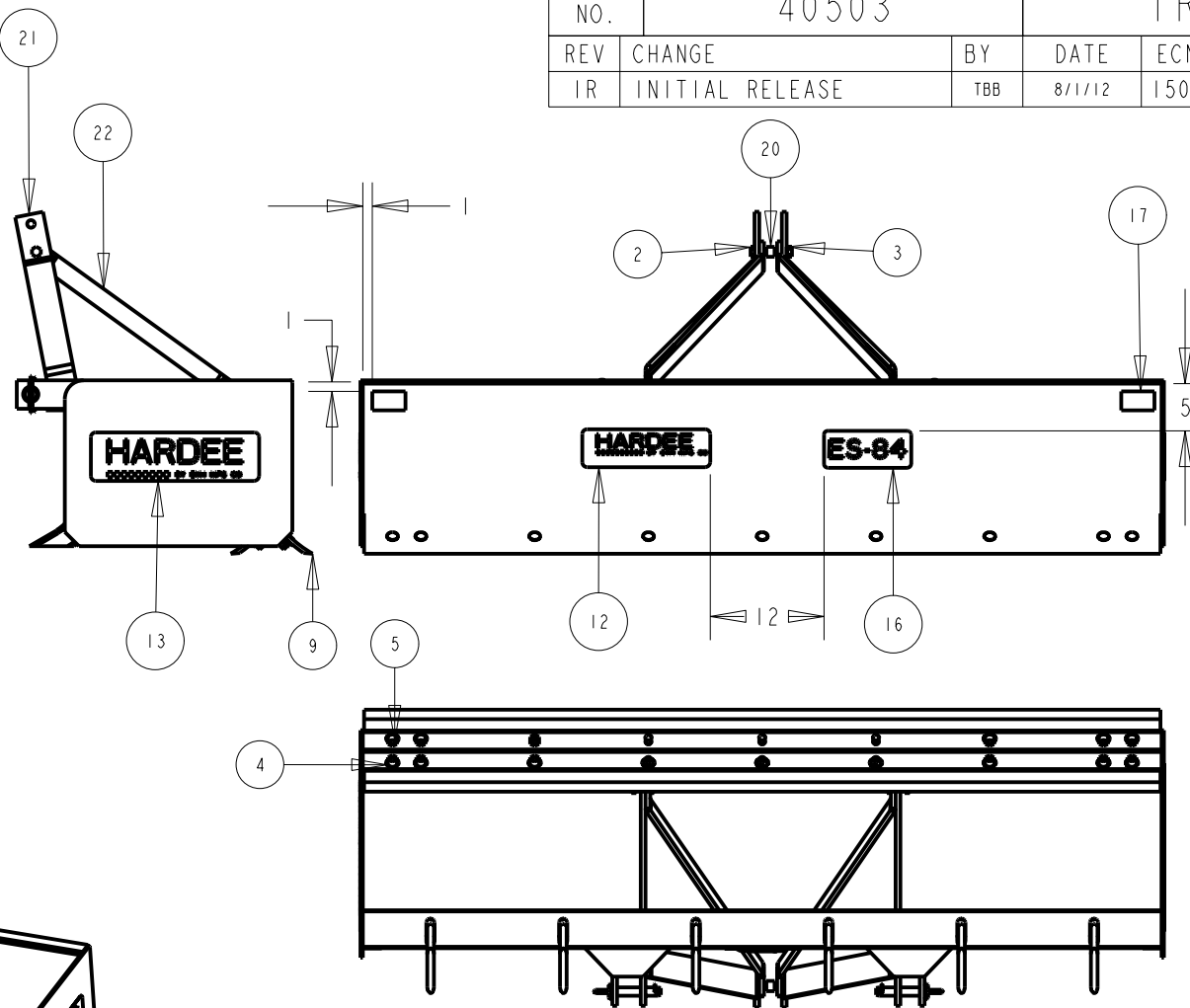


Item	Part Number	Qty.	Description
1	10092	4	Hex Bolt 5/8 x 2 gr.5 plated
2	10095	1	Hex Bolt 5/8" x 3 1/2" gr.5 Plated
3	10166	23	Lock Nut 5/8 plated
4	10212	18	FLAT WASHER 5/8" S.A.E. PLATED
5	10262	18	Plow Bolt 5/8 x 1 1/2 Gr.5 Plated
6	10335	1	Hardee Red Paint
7	10339	2	Rivet For Serial Number Plate
8	10346	3	3 pt. Snap Pin (Lynch Pin)
9	10433	2	84 Cutting Edge
10	10469	2	Hitch Pin
11	10485	6	Scarifier
12	11010	1	Large Hardee Logo Decal
13	11131	2	Large Hardee Logo Decal
14	11636	1	Safety Decal Sheet
15	11727	1	Serial Number Plate
16	11859	1	DECAL, MODEL ES-84
17	15852	2	Red Reflector Decal
18	15853	2	Yellow Reflector Decal
19	40304	3	SCARIFER LOCK AS BOX SCRAPER
20	40518	1	ES Hitch Spacer
21	40519	2	ES A-Frame (Clevis Style)
22	40520	2	ES Strut (Clevis Style)
23	40531	1	ES-84 FRAME WELDMENT

DWG. NO.	40503			REV.	IR
REV	CHANGE	BY	DATE	ECN	
IR	INITIAL RELEASE	TBB	8/1/12	1506	



All Dimensions in Inches Unless Otherwise Specified  
 Dimensions in [ ] are in Millimeters  
 Tolerance Unless Otherwise Specified  
 Fractional Dimensions ± 1/16" Angular Dimensions ± 1°  
 Decimal Dim. to Limits Shown All Holes to be +0 -1/32"

MODELED BY	TBB	8/1/12	<b>HARDEE BY EVH MFG. CO.</b> LORIS S.C.		
DRAWN BY	TBB	8/1/12			
MATERIAL	R.M.N. N/A		DESCRIPTION	SHEET 1 of 1	
Manufactured By: EVH Mfg. Co., LLC			ES-84 Complete	DO NOT SCALE	DWG. NO. 40503