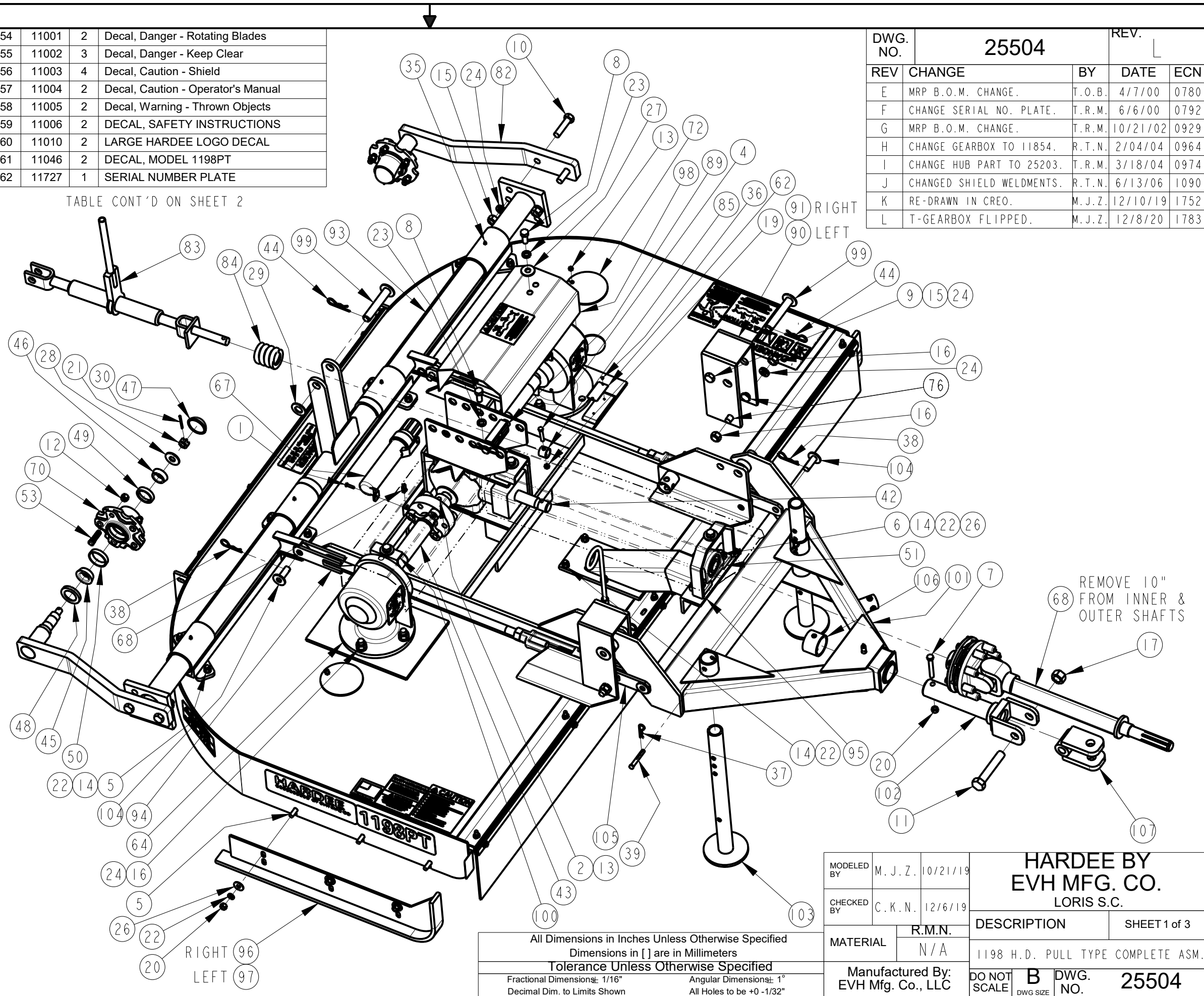


Item	Part Number	Qty.	Description
1	10002	2	HEX BOLT, 1/4-20 X 1" Gr.5 PLATED
2	10021	2	Hex Bolt, 5/16" X 3" gr.5 Plated
3	10032	16	Hex Bolt, 3/8 x 1-1/2 gr.5 plated
4	10033	1	HEX BOLT, 3/8" x 2-1/2" Gr.5 plated
5	10072	18	HEX BOLT, 1/2 x 1 1/2 Gr.5 PLATED
6	10073	2	HEX BOLT, 1/2 x 2 Gr.5 plated
7	10076	1	HEX BOLT, 1/2 X 3 1/2 Gr.5 Plated
8	10091	14	HEX BOLT, 5/8 X 1-1/2 GR.5 PLATED
9	10111	2	HEX BOLT, 3/4"-10 X 2" Gr.5 PLATED
10	10113	4	Hex Bolt 3/4" X 3" gr.5 Plated
11	10134	1	Hex Bolt, 1" x 5-1/2" Gr.5 Plated
12	10150	10	LUG NUT (1/2" - 20 UNF)
13	10154	4	LOCKNUT, 5/16"-18 PLATED
14	10164	14	1/2" Hex Nut (Gr.5 Plated)
15	10167	6	3/4" HEX NUT (Gr.5 PLATED)
16	10168	12	LOCKNUT, 3/4"-10 (Gr.5 Plated)
17	10169	1	HEX NUT, 1"-8 PLATED
18	10173	2	1" Castle Flange Nut
19	10175	17	LOCKNUT, 3/8"-16 (Gr.5 Plated)
20	10176	7	LOCKNUT, 1/2" (Gr.5 Plated)
21	10179	2	Castle Nut (3/4") Gr.5 Fine Thread
22	10184	20	LOCKWASHER, 1/2" PLATED
23	10185	14	LOCKWASHER, 5/8" PLATED
24	10186	16	LOCKWASHER, 3/4" PLATED
25	10202	32	FLATWASHER, 3/8" PLATED
26	10204	8	FLATWASHER, 1/2" USS PLATED
27	10205	12	FLATWASHER, 5/8" PLATED
28	10206	2	FLATWASHER, 3/4" PLATED
29	10207	1	FLATWASHER, 1" PLATED
30	10243	2	Cotter Pin, 5/32" X 2" Plated
31	10252	2	COTTER PIN, 3/16" X 2" PLATED
32	10311	4	BLADE BOLT NUT
33	10312	4	BLADE BOLT LOCKWASHER
34	10313	4	1 1/4" BLADE BOLT
35	10322	6	Grease Fitting, 1/4"-28 Thread
36	10339	2	POP RIVET
37	10390	2	CLIP PIN (1/8 x 2)
38	10391	5	Clip Pin (Hairpin) 3/16 X 3-1/4"
39	10393	2	UNIVERSAL CLIP PIN
40	10413	2	BLADE, COUNTERCLOCKWISE
41	10414	2	BLADE, CLOCKWISE
42	10415	1	T GEARBOX, RC-61
43	10417	2	OUTRIGGER SHAFT
44	10420	5	Clip Pin (3/16 x 3 3/4)
45	10437	2	INNER BEARING
46	10438	2	OUTER BEARING
47	10439	2	DUST CAP
48	10440	2	GREASE SEAL
49	10441	2	OUTER CUP FOR 10438 BEARING
50	10442	2	INNER CUP FOR 10437 BEARING
51	10615	1	PILLOW BLOCK, 1-1/2"
52	10618	1	JACK, 10"
53	10632	10	STUD, 1/2"-20 X 1-7/8" BLACK, GR. 8

54	11001	2	Decal, Danger - Rotating Blades
55	11002	3	Decal, Danger - Keep Clear
56	11003	4	Decal, Caution - Shield
57	11004	2	Decal, Caution - Operator's Manual
58	11005	2	Decal, Warning - Thrown Objects
59	11006	2	DECAL, SAFETY INSTRUCTIONS
60	11010	2	LARGE HARDEE LOGO DECAL
61	11046	2	DECAL, MODEL 1198PT
62	11727	1	SERIAL NUMBER PLATE

TABLE CONT'D ON SHEET 2

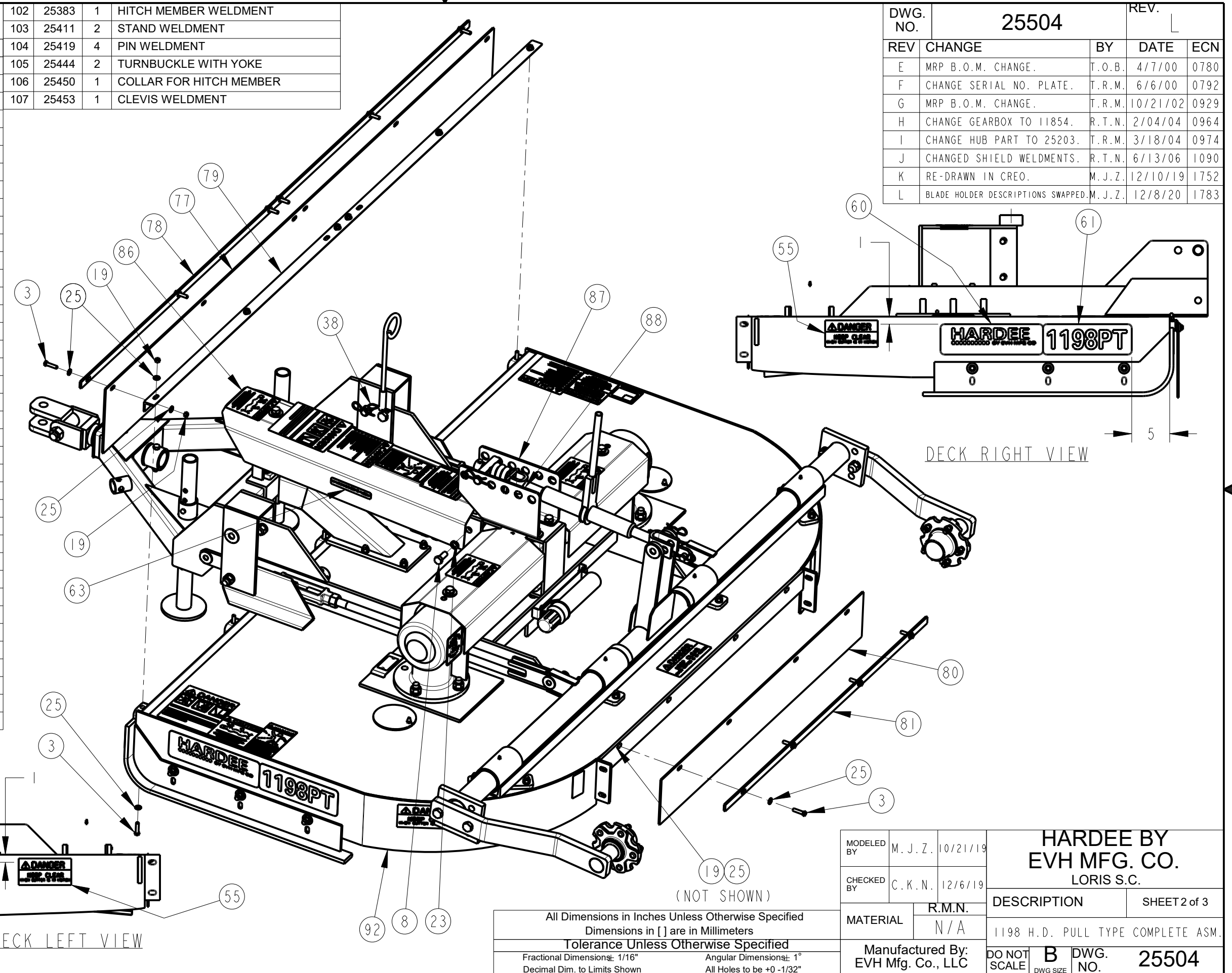


DWG. NO.	25504		REV.	L
REV	CHANGE	BY	DATE	ECN
E	MRP B.O.M. CHANGE.	T.O.B.	4/7/00	0780
F	CHANGE SERIAL NO. PLATE.	T.R.M.	6/6/00	0792
G	MRP B.O.M. CHANGE.	T.R.M.	10/21/02	0929
H	CHANGE GEARBOX TO 11854.	R.T.N.	2/04/04	0964
I	CHANGE HUB PART TO 25203.	T.R.M.	3/18/04	0974
J	CHANGED SHIELD WELDMENTS.	R.T.N.	6/13/06	1090
K	RE-DRAWN IN CREO.	M.J.Z.	12/10/19	1752
L	T-GEARBOX FLIPPED.	M.J.Z.	12/8/20	1783

All Dimensions in Inches Unless Otherwise Specified
 Dimensions in [] are in Millimeters
 Tolerance Unless Otherwise Specified
 Fractional Dimensions: 1/16"
 Decimal Dim. to Limits Shown
 Angular Dimensions: 1°
 All Holes to be +0 -1/32"

MODELED BY	M. J. Z.	10/21/19	HARDEE BY EVH MFG. CO. LORIS S.C.	
CHECKED BY	C. K. N.	12/6/19		
MATERIAL	R.M.N. N/A		DESCRIPTION	SHEET 1 of 3
Manufactured By: EVH Mfg. Co., LLC			DO NOT SCALE	B DWG. NO. 25504

Item	Part Number	Qty.	Description
63	11850	1	DECAL, WEB SITE
64	11854	2	GEARBOX, RC-61, RATIO 1:1.93
65	15852	2	RED REFLECTOR DECAL
66	15853	2	YELLOW REFLECTOR DECAL
67	15854	1	MANUAL HOLDER CANISTER
68	15860	2	U-NUT, 1/4"-20 UNC
69	15885	1	DRIVESHAFT, SPECIAL
70	16539	2	HUB COMPLETE W/BEARINGS
71	16840	4	DECAL, 5 YEAR GEARBOX WARRANTY
72	20031	2	ACCESS COVER
73	20236	2	BLADE HOLDER WELDMENT
74	20304	1	BLADE HOLDER W/BLADES, CCW
75	20305	1	BLADE HOLDER W/BLADES, CW
76	20356	4	Special Bolt, Cat. 1/2 Hitch-Hd. Grnd. Down
77	21016	1	SHIELDING, 6-HOLES, FRONT
78	21017	1	SHIELDING FLAT (FRONT)
79	21018	1	ANGLE, BELTING MOUNT
80	21023	1	SHIELDING, 4 HOLES, REAR
81	21024	1	SHIELDING, 5-HOLE, FRONT
82	21450	2	SPINDLE WELDMENT, TAILWHEEL
83	21461	1	TAIL WHEEL ADJUSTER WELDMENT
84	21465	1	SPRING
85	21468	1	COLLAR FOR HITCH MEMBER
86	21470	1	CENTER GEARBOX SHIELD
87	21477	1	LEFT HAND LINK STRAP
88	21478	1	RIGHT HAND LINK STRAP
89	21480	1	Long Trunnion Weldment
90	21541	1	WELDMENT, LEFT HITCH MOUNT
91	21548	1	WELDMENT, Right Hitch Mount
92	21575	1	DECK WELDMENT FOR 1198PT
93	21578	1	TAILWHEEL SECTION WELDMENT
94	21585	2	TURNBUCKLE WITH YOKE
95	21590	1	BEARING STAND WELDMENT
96	25042	1	Slide Weldment - Right Hand
97	25043	1	Slide Weldment - Left Hand
98	25051	2	LEFT & RIGHT GEARBOX SHIELD
99	25108	3	PIN WELDMENT
100	25285	2	SHIELD BRACKET WELDMENT
101	25369	1	HITCH WELDMENT, PULL TYPE

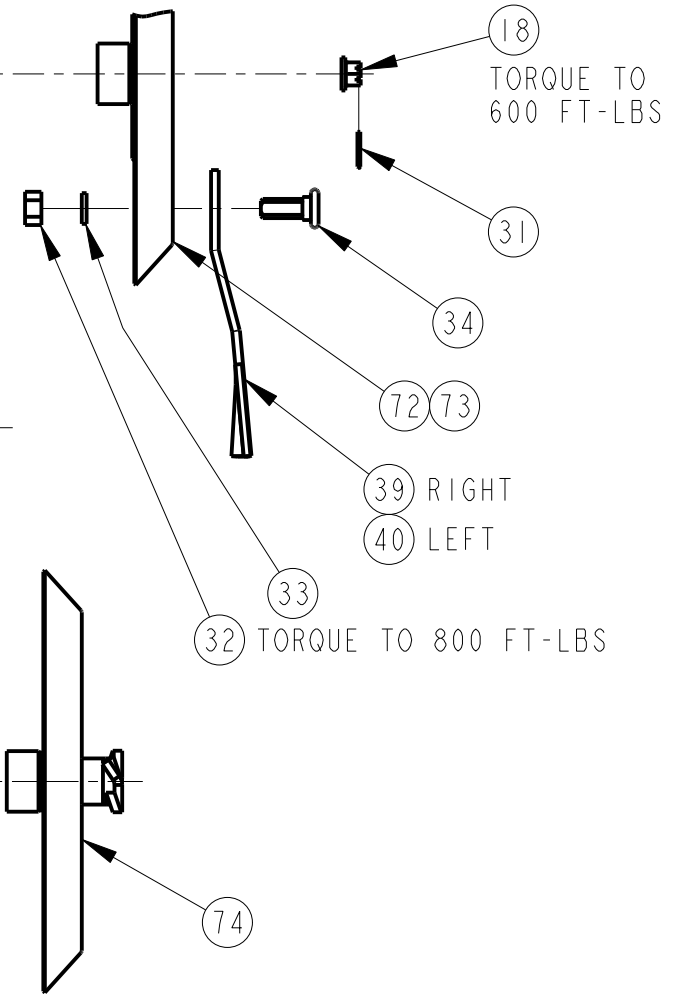
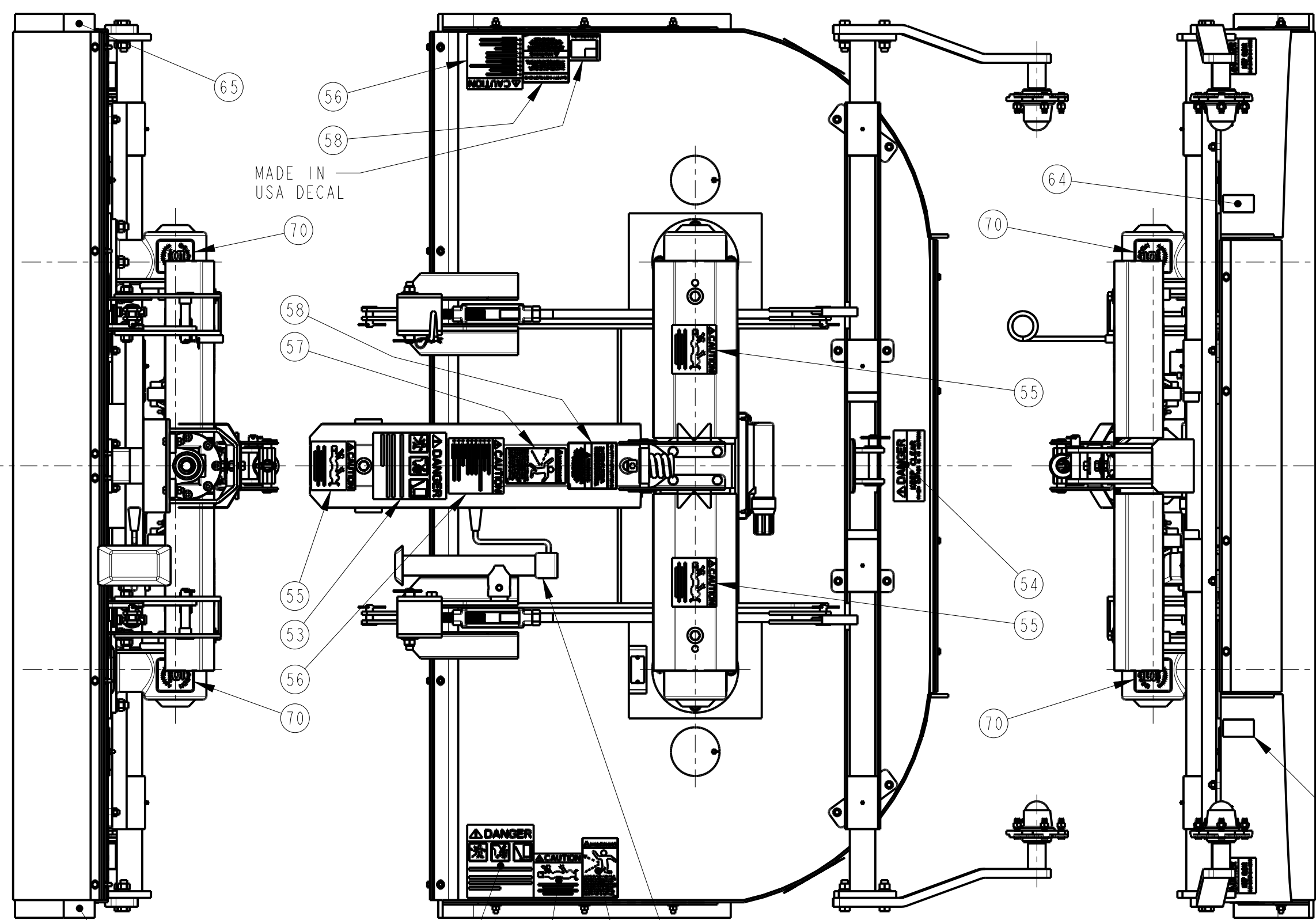


DWG. NO.	25504		REV.	L
REV	CHANGE	BY	DATE	ECN
E	MRP B.O.M. CHANGE.	T.O.B.	4/7/00	0780
F	CHANGE SERIAL NO. PLATE.	T.R.M.	6/6/00	0792
G	MRP B.O.M. CHANGE.	T.R.M.	10/21/02	0929
H	CHANGE GEARBOX TO 11854.	R.T.N.	2/04/04	0964
I	CHANGE HUB PART TO 25203.	T.R.M.	3/18/04	0974
J	CHANGED SHIELD WELDMENTS.	R.T.N.	6/13/06	1090
K	RE-DRAWN IN CREO.	M.J.Z.	12/10/19	1752
L	BLADE HOLDER DESCRIPTIONS SWAPPED.	M.J.Z.	12/8/20	1783

MODELED BY	M. J. Z.	10/21/19	HARDEE BY EVH MFG. CO. LORIS S.C.	
CHECKED BY	C. K. N.	12/6/19		
MATERIAL	R.M.N.	N/A	DESCRIPTION	SHEET 2 of 3
Manufactured By: EVH Mfg. Co., LLC			1198 H.D. PULL TYPE COMPLETE ASM.	
DO NOT SCALE	B	DWG. NO.	25504	

All Dimensions in Inches Unless Otherwise Specified
 Dimensions in [] are in Millimeters
 Tolerance Unless Otherwise Specified
 Fractional Dimensions: 1/16"
 Decimal Dim. to Limits Shown
 Angular Dimensions: 1°
 All Holes to be +0 -1/32"

DWG. NO.	25504			REV.	L
REV	CHANGE	BY	DATE	ECN	
E	MRP B.O.M. CHANGE.	T.O.B.	4/7/00	0780	
F	CHANGE SERIAL NO. PLATE.	T.R.M.	6/6/00	0792	
G	MRP B.O.M. CHANGE.	T.R.M.	10/21/02	0929	
H	CHANGE GEARBOX TO 11854.	R.T.N.	2/04/04	0964	
I	CHANGE HUB PART TO 25203.	T.R.M.	3/18/04	0974	
J	CHANGED SHIELD WELDMENTS.	R.T.N.	6/13/06	1090	
K	RE-DRAWN IN CREO.	M.J.Z.	12/10/19	1752	
L	LEFT & RIGHT BLADES SHOWN IMPROPERLY.	M.J.Z.	12/8/20	1783	



(HITCH & TAILWHEEL ADJUSTER NOT SHOWN)

51 NOT SHOWN ON OTHER SHEETS

All Dimensions in Inches Unless Otherwise Specified
 Dimensions in [] are in Millimeters
 Tolerance Unless Otherwise Specified
 Fractional Dimensions: 1/16" Angular Dimensions: 1°
 Decimal Dim. to Limits Shown All Holes to be +0 -1/32"

MODELED BY	M. J. Z.	10/21/19	HARDEE BY EVH MFG. CO. LORIS S.C.	
CHECKED BY	C. K. N.	12/6/19		
MATERIAL	R.M.N. N/A		DESCRIPTION	SHEET 3 of 3
Manufactured By: EVH Mfg. Co., LLC			1198 H.D. PULL TYPE COMPLETE ASM.	
DO NOT SCALE	B DWG SIZE	DWG. NO.	25504	