

ITEM NO.	PART NUMBER	QTY REQD.	NOMENCLATURE OR DESCRIPTION
1	24411	1	Deck Weldment
2	24381	1	Tailwheel Fork & Arm Assembly
3	24230	1	Blade Holder Sub Assembly
4	11174	1	DRIVESHAFT
5	11499	1	48" Panther Decal Sheet
6	20030	2	Tail Wheel Adjusting Bracket
7	24209	2	Strut
8	20035	1	Floating Linkage Weldment
9	24215	1	Floating Linkage Spacer
10	24386	2	A-Frame
11	11469	1	Retaining Ring (comes w/gearbox)
12	11172	1	1.93:1 Splineless Gearbox
13	10097	1	Hex Bolt (5/8" X 4 1/2" GR.5)
14	10102	1	5/8" X 7" Hex Bolt
15	11806	2	Logo & Model # Decal for Panther 48
16	10091	4	Hex Bolt (5/8" X 1 1/2" Gr.5)
17	10096	1	Hex Bolt (5/8" X 4" Gr.5 Plated)
18	10099	1	Hex Bolt (5/8" X 5-1/2" Gr.5 Plated)
19	10330	1	15" Solid Tire & Rim
20	10166	12	Lock Nut (5/8" Plated)
21	10173	1	Castle Nut (comes with Gearbox)
22	10893	2	TIE STRAP (18" LONG)
23	10185	8	Lock Washer (5/8" Plated)
24	20036	1	Spindle Shaft Tube
25	10246	1	Cotter Pin (3/16" X 1-1/4" Plated)
26	10307	2	Category 1 Hitch Pin
27	10184	4	1/2" Lockwashers
28	11728	1	Fab Hub w/Grafoil Bushings
29	10335	.75	Hardee Red Paint
30	10336	0.19	Gear Oil
31	10269	1	Hex Head Cap Screw (1/2"-13 UNC X 3 3/4" Grade 2 Zinc Plated)

DWG. NO.			REV.	
24410			IR	
REV	CHANGE	BY	DATE	ECN
IR	INITIAL RELEASE	T. NAIL	7/10/01	0905

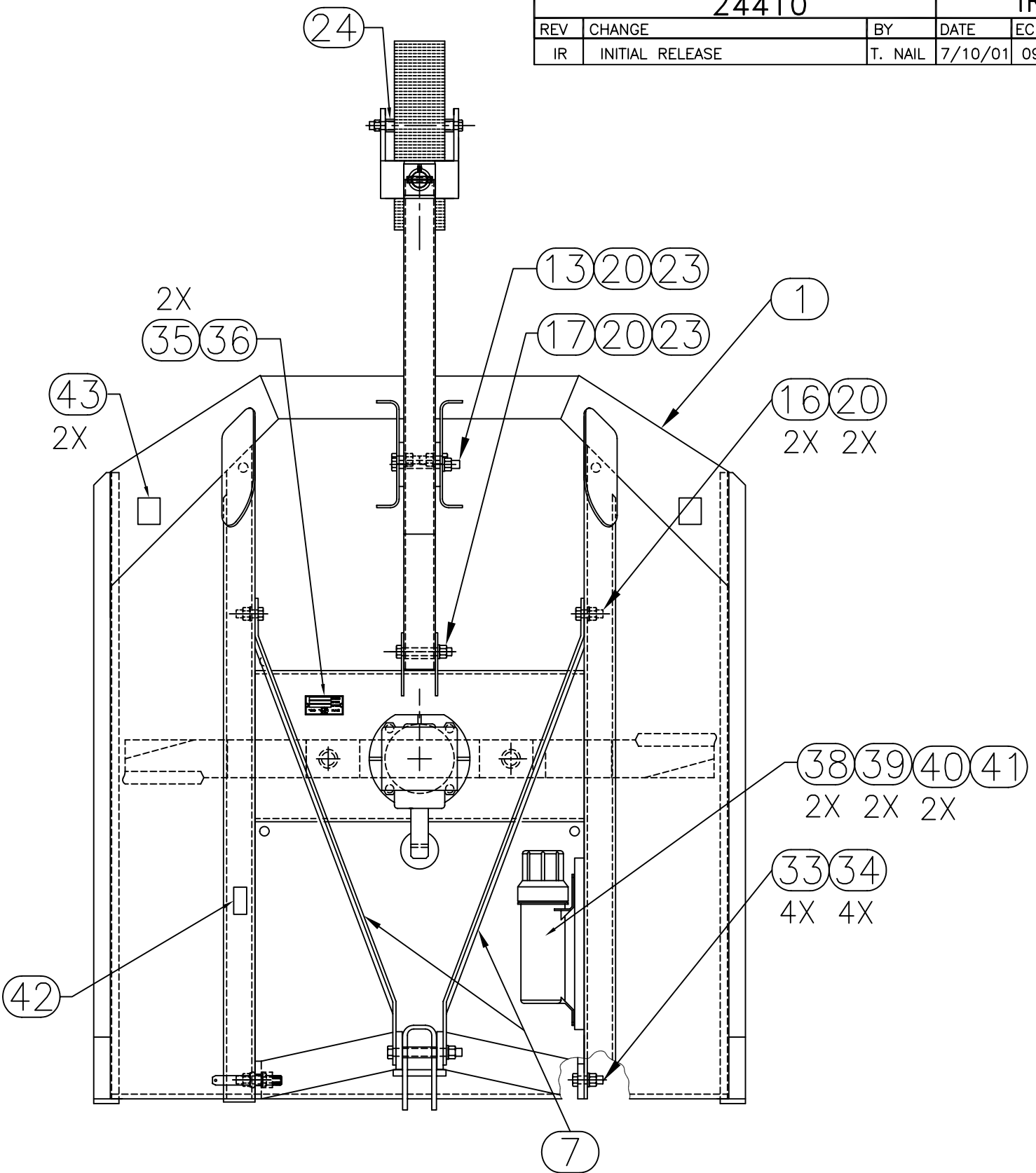
32	10176	5	Lock Nut (1/2" Plated)
33	10110	4	Hex Bolt (3/4" X 1 1/2" Gr.5 Plated)
34	10168	4	Locknut (3/4" plated)
35	10339	2	Rivets for Serial # Plate
36	11727	1	Serial # Plate
37	11010	2	Hardee Logo Decal
38	10002	2	Hex Bolt (1/4" X 1")
39	10200	2	Flat Washer (1/4")
40	15860	2	U-Nut (1/4")
41	15854	1	Manual Holder
42	11850	1	Website Decal
43	11852	2	Red Deflector

All Dimensions in Inches Unless Otherwise Specified
Dimensions in [] are in Millimeters

Tolerances Unless Otherwise Specified
Fractional Dimensions ±1/16" Angular Dimensions ±1"
Decimal Dim. to Limits Shown All holes to be $\begin{matrix} +0 \\ -1/32 \end{matrix}$

DRAWN BY	T. NAIL	7/10/01	HARDEE MFG. CO., LLC LORIS S.C.	
CHECKED BY				
MATERIAL	R.M.N.		APPLICATION	OLD PART #
MANUFACTURED BY: HARDEE MFG. CO., LLC			PANTHER 48	
			DESCRIPTION	PANTHER48 COMPLETE
DO NOT SCALE	A	DWG. NO.	SHEET 1 OF 5	
	DWG SIZE	24410		

DWG. NO.		24410		REV.		IR	
REV	CHANGE	BY	DATE	ECN			
IR	INITIAL RELEASE	T. NAIL	7/10/01	0905			



TOP VIEW

DRAWN BY	T. NAIL	7/10/01	HARDEE MFG. CO., LLC LORIS S.C.	
CHECKED BY				
MATERIAL	R.M.N.		APPLICATION	OLD PART #
MANUFACTURED BY: HARDEE MFG. CO., LLC			PANTHER 48	
			DESCRIPTION	PANTHER 48 COMPLETE
DO NOT SCALE	A	DWG. NO.	SHEET 2 OF 5	
	DWG SIZE	24410		

All Dimensions in Inches Unless Otherwise Specified
 Dimensions in [] are in Millimeters

Tolerances Unless Otherwise Specified
 Fractional Dimensions $\pm 1/16"$
 Decimal Dim. to Limits Shown

Angular Dimensions $\pm 1^\circ$
 All holes to be $\begin{matrix} +0 \\ -1/32 \end{matrix}$

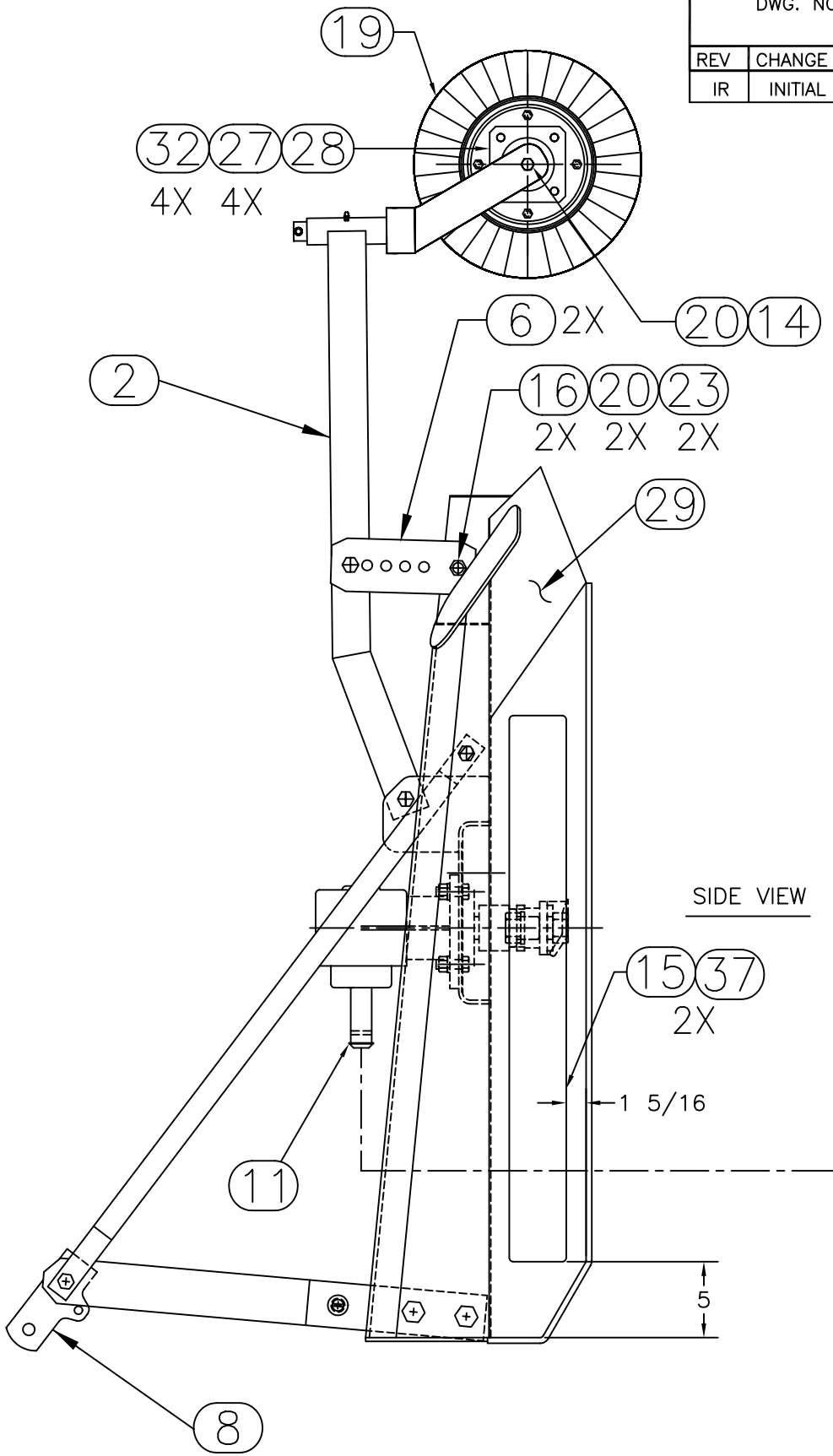
DWG. NO.

24410

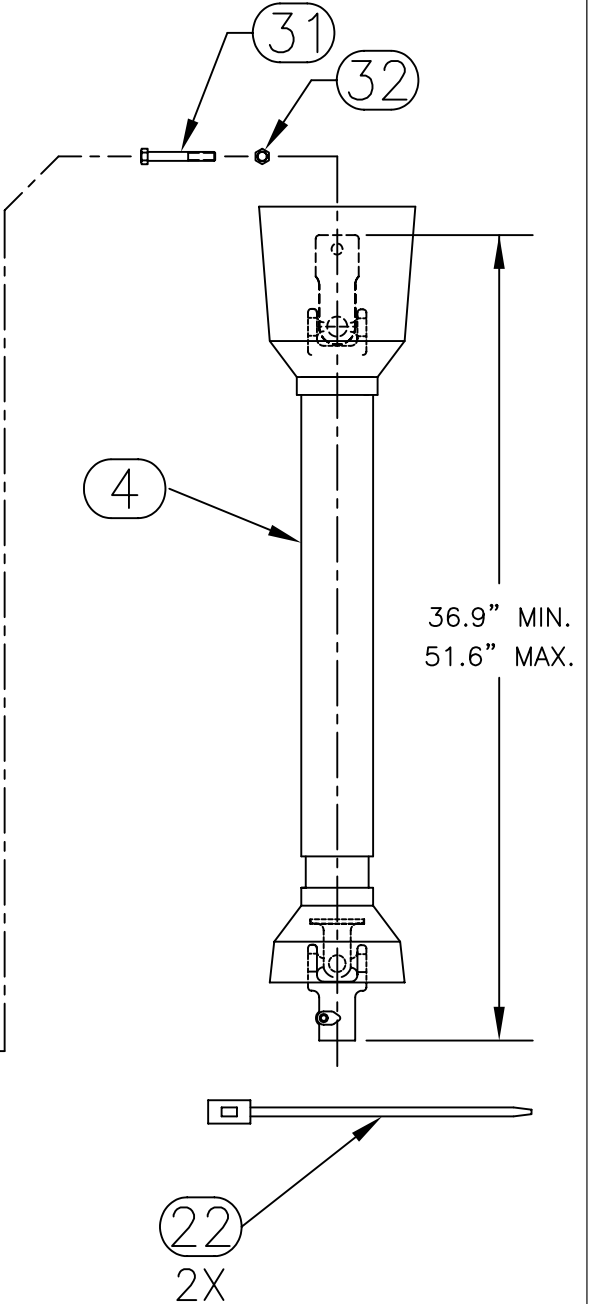
REV.

IR

REV	CHANGE	BY	DATE	ECN
IR	INITIAL RELEASE	T. NAIL	7/10/01	0905



SIDE VIEW



All Dimensions in Inches Unless Otherwise Specified
Dimensions in [] are in Millimeters

Tolerances Unless Otherwise Specified
Fractional Dimensions $\pm 1/16"$ Angular Dimensions $\pm 1^\circ$
Decimal Dim. to Limits Shown All holes to be $^{+0}_{-1/32}$

DRAWN BY	T. NAIL	7/10/01
CHECKED BY		
MATERIAL	R.M.N.	
MANUFACTURED BY: HARDEE MFG. CO., LLC		

<p>HARDEE MFG. CO., LLC LORIS S.C.</p>	
APPLICATION	OLD PART #
PANTHER 48	
DESCRIPTION	PANTHER 48 COMPLETE
DO NOT SCALE	DWG. NO. 24410
A	SHEET 3 OF 5
DWG SIZE	

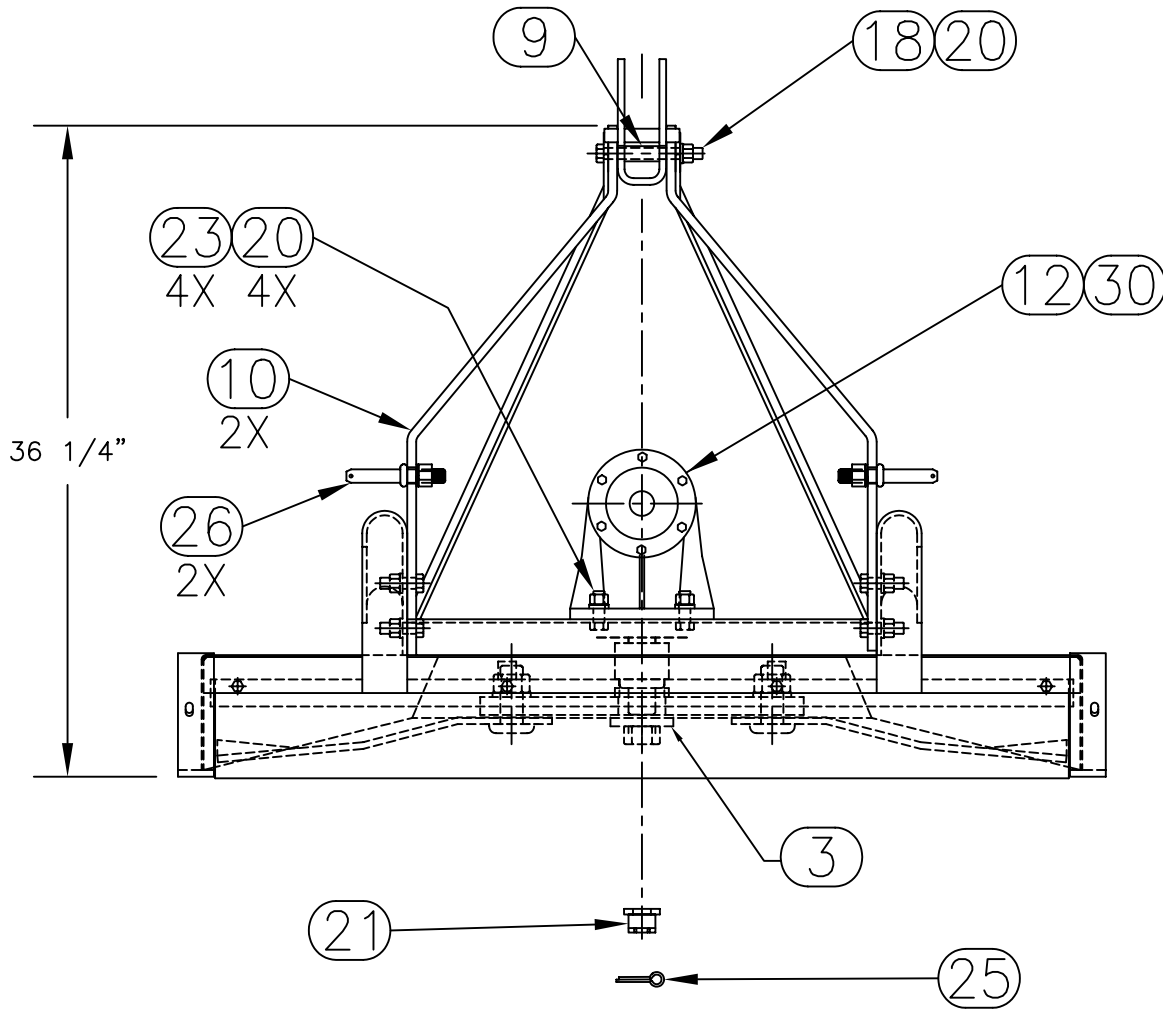
DWG. NO.

24410

REV.

IR

REV	CHANGE	BY	DATE	ECN
IR	INITIAL RELEASE	T. NAIL	7/10/01	0905



FRONT VIEW

DRAWN BY	T. NAIL	7/10/01
CHECKED BY		

HARDEE MFG. CO., LLC
LORIS S.C.

All Dimensions in Inches Unless Otherwise Specified
Dimensions in [] are in Millimeters

Tolerances Unless Otherwise Specified
Fractional Dimensions $\pm 1/16"$ Angular Dimensions $\pm 1^\circ$
Decimal Dim. to Limits Shown All holes to be $^{+0}_{-1/32}$

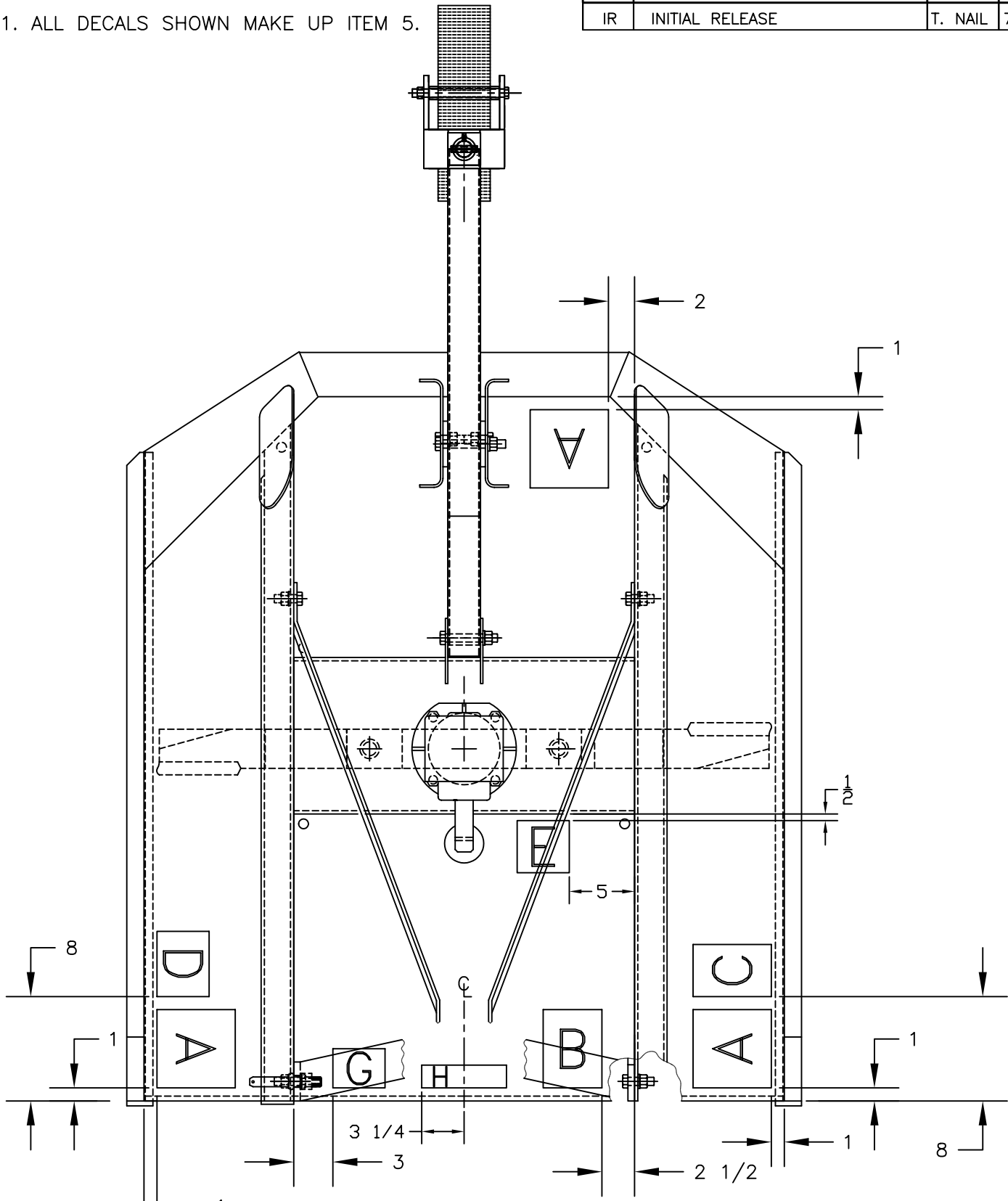
MATERIAL R.M.N.
MANUFACTURED BY:
HARDEE MFG. CO., LLC

APPLICATION	OLD PART #
PANTHER 48	
DESCRIPTION	PANTHER 48 COMPLETE
DO NOT SCALE	DWG. NO. 24410
A DWG SIZE	SHEET 4 OF 5

NOTES:

1. ALL DECALS SHOWN MAKE UP ITEM 5.

DWG. NO.		REV.	
24410		IR	
REV	CHANGE	BY	DATE
IR	INITIAL RELEASE	T. NAIL	7/10/01
		ECN	0905



DRAWN BY	T. NAIL	7/10/01	HARDEE MFG. CO., LLC LORIS S.C.	
CHECKED BY				
MATERIAL	R.M.N.		APPLICATION	OLD PART #
MANUFACTURED BY: HARDEE MFG. CO., LLC			PANTHER 48	
			DESCRIPTION	PANTHER 48 COMPLETE
DO NOT SCALE	A	DWG. NO.	SHEET 5 OF 5	
	DWG SIZE	24410		

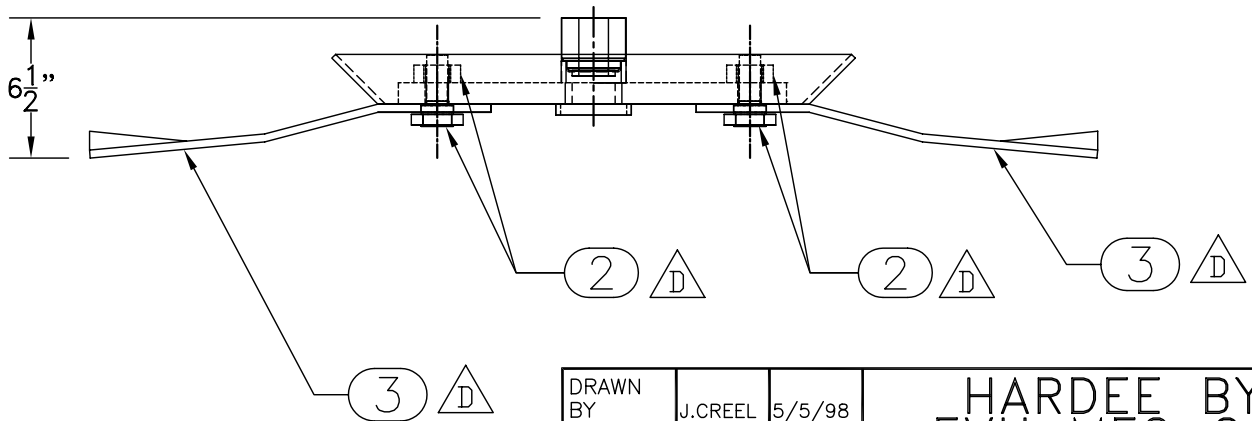
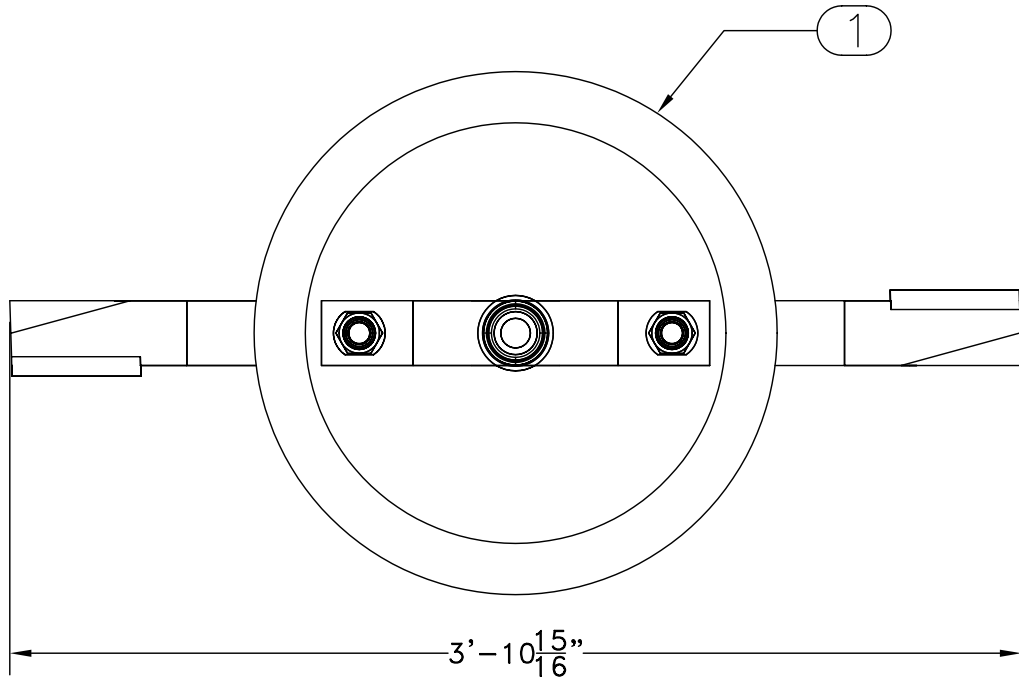
All Dimensions in Inches Unless Otherwise Specified
 Dimensions in [] are in Millimeters

Tolerances Unless Otherwise Specified
 Fractional Dimensions $\pm 1/16"$ Angular Dimensions $\pm 1^\circ$
 Decimal Dim. to Limits Shown All holes to be $+0$
 $-1/32$

ITEM NO.	PART NUMBER	QTY REQD.	NOMENCLATURE OR DESCRIPTION
1	24228	1	BLADE HOLDER WELDMENT
2	24059	2	BLADE BOLT W/LOCKNUT
3	10304	2	BLADE



DWG. NO.			REV.	
24230			D	
REV	CHANGE	BY	DATE	ECN
IR	INITIAL RELEASE	J.CREEL	5/5/98	---
A	CHANGE HEIGHT DIMENSION	M.J.T.	11/3/98	0523
B	CHANGE BLADE BOLT	M.J.T.	12/2/98	0534
C	CHANGE BLADE BOLT	T.R.M.	11/30/99	0674
D	REVISED B.O.M. LIST -REVISED CO. HEADER	T.A.S.	2/4/2011	1403



DRAWN BY	J.CREEL	5/5/98
CHECKED BY	C.K.N.	2/4/2011
MATERIAL	R.M.N.	
MANUFACTURED BY:	HARDEE BY EVH MFG. CO. LORIS S.C.	

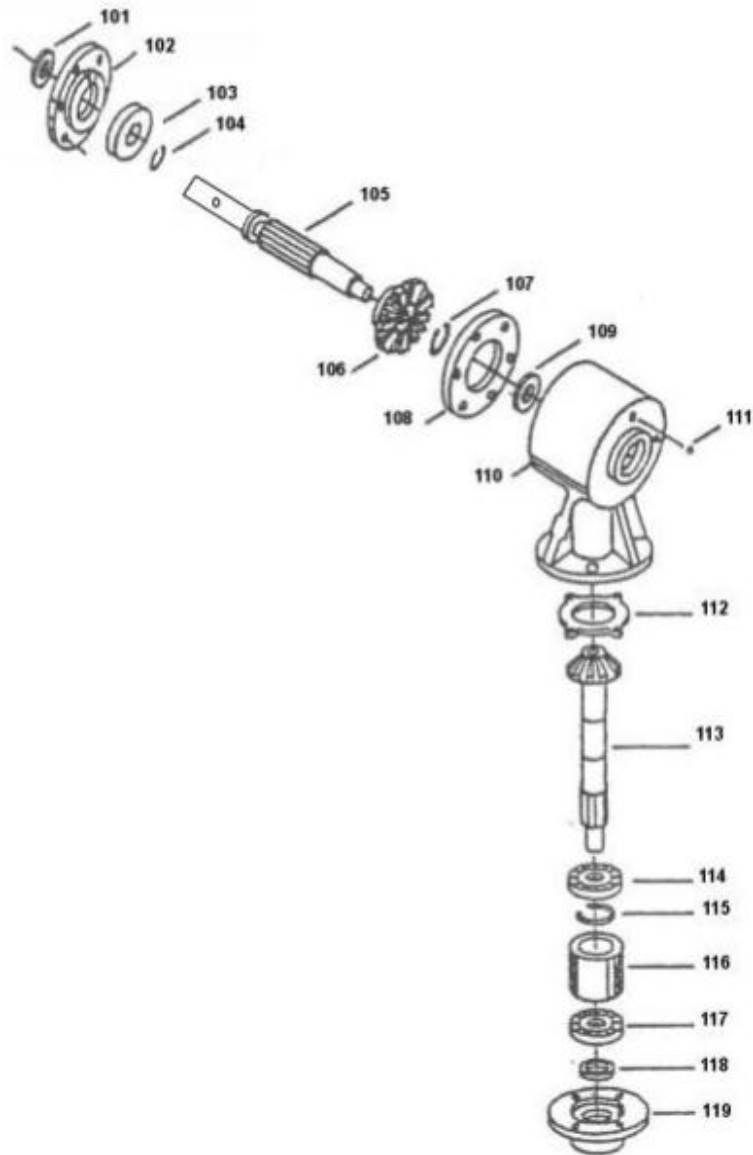
HARDEE BY EVH MFG CO. LORIS S.C.	
APPLICATION	OLD PART #
P-48	
DESCRIPTION:	P-48 BLADE HOLDER COMPLETE
DO NOT SCALE	DWG. NO.
A	24230
DWG SIZE	

All Dimensions in Inches Unless Otherwise Specified
Dimensions in [] are in Millimeters

Tolerances Unless Otherwise Specified
Fractional Dimensions $\pm 1/16$ " Angular Dimensions $\pm 1^\circ$
Decimal Dim. to Limits Shown All holes to be $\begin{matrix} +0 \\ -1/32 \end{matrix}$

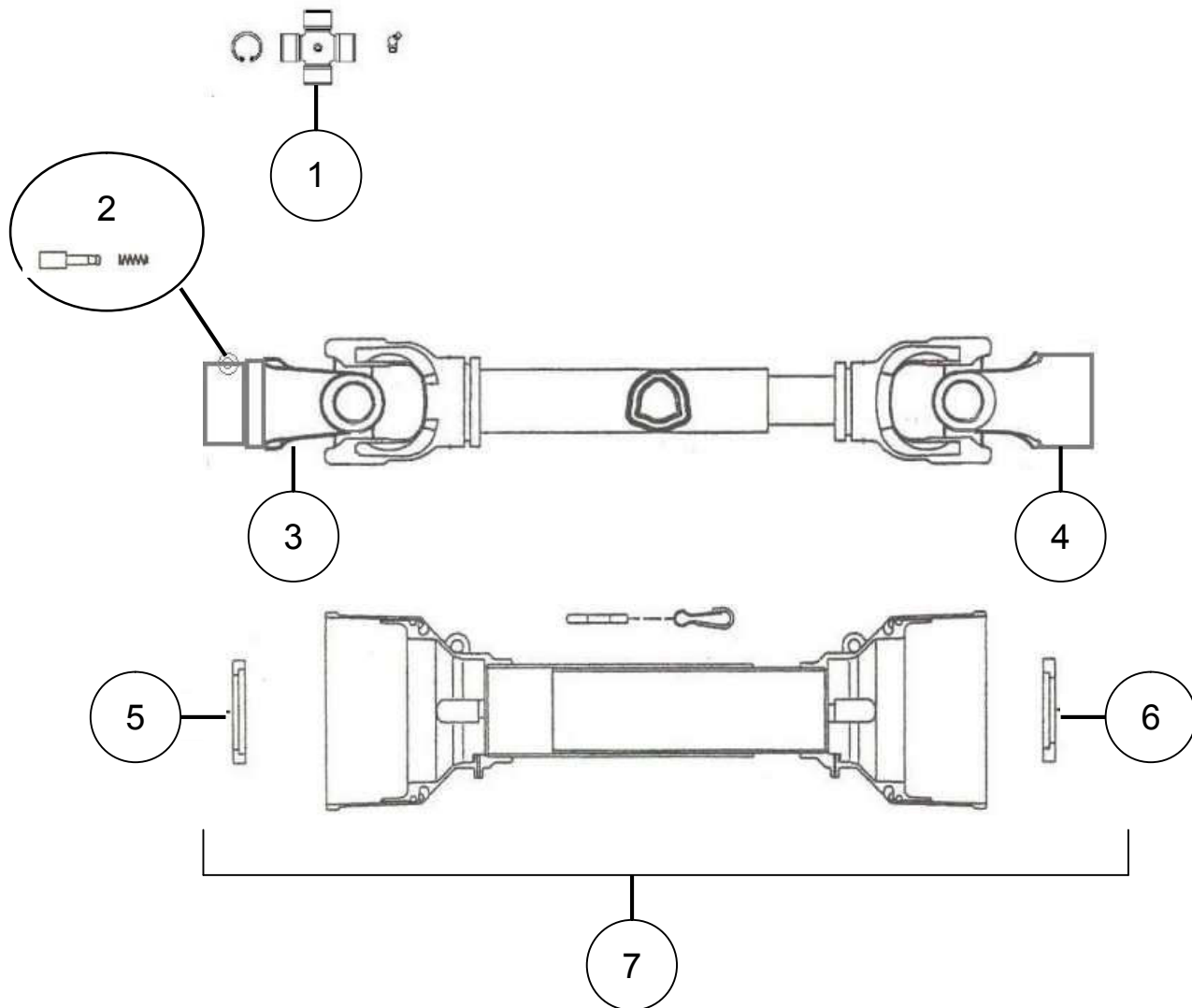
11172 Gearbox

(40 H.P. Gearbox 1:1.93 Ratio)



Key #	Part No.	Part Description	Key #	Part No.	Part Description
101	15688	Input seal	111	15664	Pressure relief plug
102	15689	Face plate	112	15753	Gasket
103	15750	Ball bearing	113	16017	Output shaft w/gear
104	15690	Retaining ring	114	15750	Ball bearing
105	15475	Input shaft	115	15695	Retaining ring
106	15545	Input gear	116	15696	Spacer
107	15695	Retaining ring	117	15750	Ball bearing
108	15691	Shim .004	118	15755	Output seal
109	15692	Ball bearing	119	15697	Bottom cap
110	15752	Housing			

11174 Driveshaft



Key #	Part No.	Description	Qty.
1	15112	Cross Kit (Series 4)	2
2	15579	Pin Kit	1
3	11436	Yoke	1
4	15111	Yoke	1
5	11552	O Bearing 4	1
6	11551	I Bearing 4	1
7	11743	Shield Kit	1