

ITEM NO.	PART NUMBER	QTY REQD.	NOMENCLATURE OR DESCRIPTION
1	10002	2	1/4" x 1" HEX BOLT
2	10015	4	5/16" X 1/2" HEX BOLT
3	10035	1	3/8" X 3" HEX BOLT
4	10091	2	5/8" X 1-1/2" HEX BOLT
5	10097	4	5/8" X 4-1/2" HEX BOLT
6	10111	4	3/4" X 2" HEX BOLT
7	10112	4	3/4" X 2-1/2" HEX BOLT
8	10117	1	3/4" X 5" HEX BOLT
9	10118	1	3/4" X 5-1/2" HEX BOLT
10	10154	2	5/16" LOCK NUT
11	10166	6	5/8" LOCK NUT
12	10168	12	3/4" LOCK NUT
13	10173	1	CASTLE NUT (1")
14	10175	1	3/8" LOCK NUT
15	10176	6	1/2" LOCK NUT
16	10181	4	5/16" LOCK WASHER
17	10182	1	3/8" LOCK WASHER
18	10186	4	3/4" LOCK WASHER
19	10200	2	1/4" FLAT WASHER
20	10201	4	5/16" FLAT WASHER
21	10243	1	5/32" X 2" COTTER PIN
22	10260	6	1/2" X 1-1/2" PLOW BOLT
23	10322	1	1/4" GREASE FITTING
24	10330	2	4"X8"X15" SOLID TIRE & RIM
25	10335	2.15	RED PAINT (GAL.)
26	10336	.38	GEAR OIL (GAL.)
27	10339	2	RIVET 1/8" X 3/8"
28	10327	1	GEARBOX - 90 HP
29	10342	2	CAT 2 HITCH PIN
30	10475	1	SHAFT CONE
31	11001	1	DANGER DECAL

DWG. NO.			REV.	
20391			IR	
REV	CHANGE	BY	DATE	ECN
IR	INITIAL RELEASE	B.C	6/22/07	---

32	11002	2	DECAL, DANGER KEEP CLEAR
33	11003	1	CAUTION DECAL
34	11004	1	CAUTION DECAL
35	11005	1	WARNING DECAL
36	11006	1	SAFETY DECAL
37	11131	2	LOGO DECAL
38	11511	2	MODEL # DECAL
39	11850	1	WEB DECAL
40	11727	1	SERIAL NUMBER PLATE
41	11567	1	BINACCCHI DRIVESHAFT
42	20031	1	ACCESS COVER
43	20187	2	TAILWHEEL FORK & ARM COMPLETE
44	20195	2	CUTTER TAILWHEEL HUB COMPLETE
45	15852	2	DECAL RED REFLECTOR
46	20301	1	BLADE HOLDER SUBASSEMBLY
47	20403	1	DECK WELDMENT, 1084W
48	20417	1	RIGHT SIDE A-FRAME WELDMENT
49	20418	1	LEFT SIDE A-FRAME WELDMENT
50	20426	1	CAT. 2 FLOATING LINKAGE
51	20491	2	FLAT STRUT
52	20439	2	A-FRAME BRACE
53	20440	2	REPLACEMENT SLIDE
54	20441	1	SPACER
55	15854	1	MANUAL HOLDER
56	15860	2	U-NUT
57	20901	1	FRONT BELTING KIT
58	20817	1	REAR BELTING KIT

All Dimensions in Inches Unless Otherwise Specified
Dimensions in [] are in Millimeters

Tolerances Unless Otherwise Specified
Fractional Dimensions ±1/16" Angular Dimensions ±1°
Decimal Dim. to Limits Shown All holes to be ⁺⁰/_{-1/32}

DRAWN BY	B.C	6/22/07	EVH MANUFACTURING CO LORIS S.C.	
CHECKED BY				
MATERIAL		R.M.N.	APPLICATION 1084W	OLD PART # N/A
MANUFACTURED BY: EVH MANUFACTURING CO			DESCRIPTION ASSEMBLY FOR 1084W	
DO NOT SCALE	A	DWG. NO.	SHT 1 OF 3 20391	

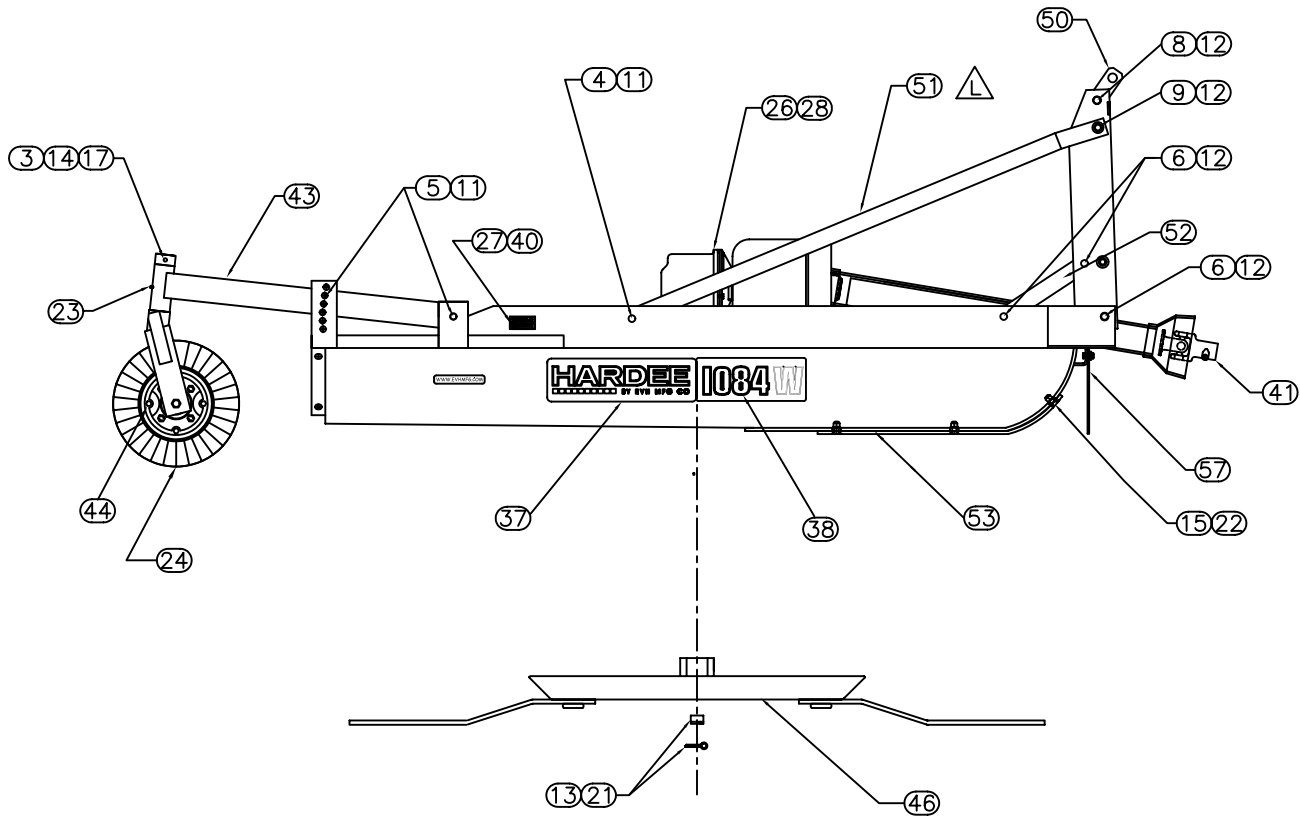
DWG. NO.

20391

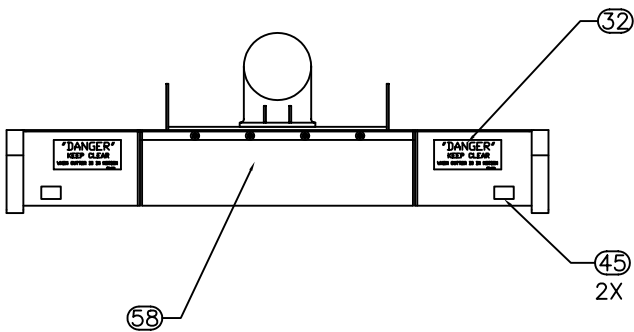
REV.

IR

REV	CHANGE	BY	DATE	ECN
IR	INITIAL RELEASE	B.C	6/22/07	---



R.H. SIDE VIEW



VIEW IS NOT TO SCALE
FOR DECAL PLACEMENT ONLY

DRAWN BY	B.C	6/22/07	EVH MANUFACTURING CO LORIS S.C.	
CHECKED BY				
MATERIAL	R.M.N.		APPLICATION	OLD PART #
MANUFACTURED BY: EVH MANUFACTURING CO			1084W	----
			DESCRIPTION	
			ASSEMBLY FOR 1084W	
DO NOT SCALE	A	DWG. NO.	20391	
		DWG SIZE	SHT 2 OF 3	

All Dimensions in Inches Unless Otherwise Specified
Dimensions in [] are in Millimeters

Tolerances Unless Otherwise Specified
Fractional Dimensions $\pm 1/16"$ Angular Dimensions $\pm 1^\circ$
Decimal Dim. to Limits Shown All holes to be $\begin{matrix} +0 \\ -1/32 \end{matrix}$

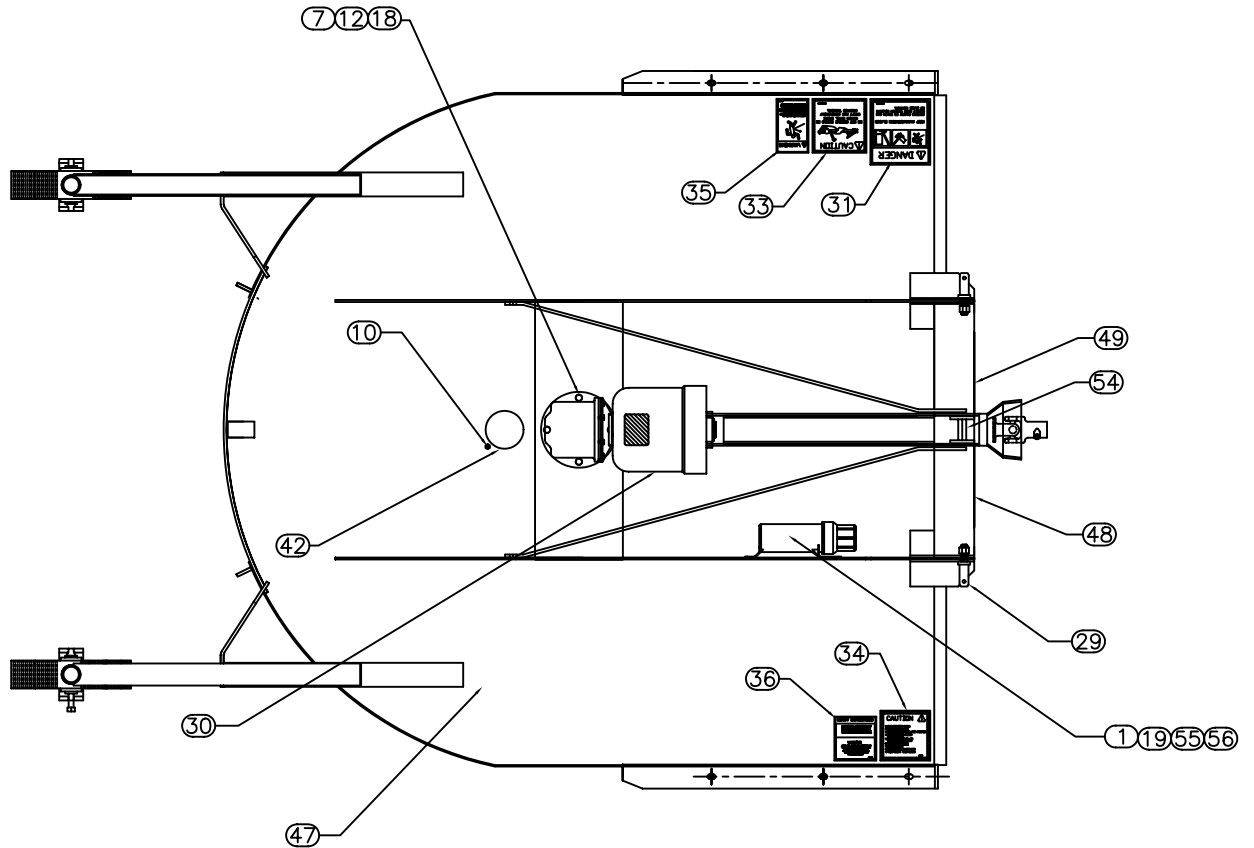
DWG. NO.

20391

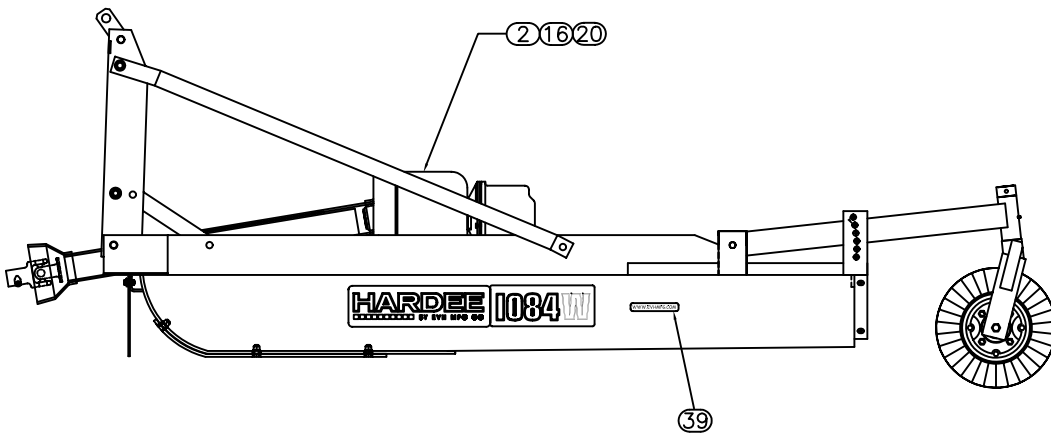
REV.

IR

REV	CHANGE	BY	DATE	ECN
IR	INITIAL RELEASE	B.C	6/22/07	---



TOP VIEW



L.H. SIDE VIEW
BLADE HOLDER OMITTED
FOR CLARITY

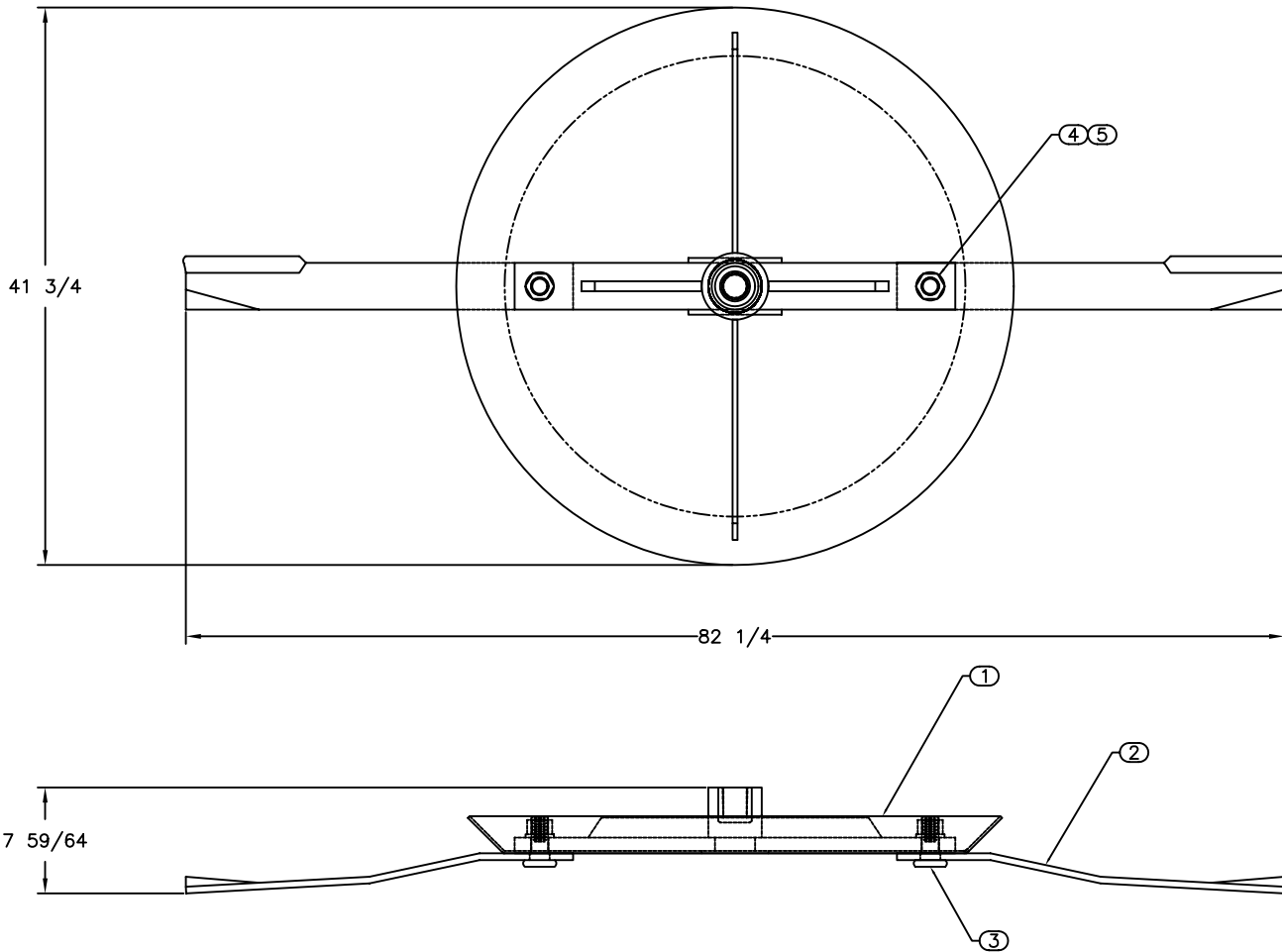
All Dimensions in Inches Unless Otherwise Specified
Dimensions in [] are in Millimeters

Tolerances Unless Otherwise Specified
Fractional Dimensions $\pm 1/16"$ Angular Dimensions $\pm 1^\circ$
Decimal Dim. to Limits Shown All holes to be $+0/-1/32$

DRAWN BY	B.C	6/22/07	EVH MANUFACTURING CO LORIS S.C.	
CHECKED BY				
MATERIAL	R.M.N.		APPLICATION	OLD PART #
MANUFACTURED BY: EVH MANUFACTURING CO			1084W	----
			DESCRIPTION	
DO NOT SCALE	A	DWG. NO.	20391	
	DWG SIZE	SHT 3 OF 3		

ITEM NO.	PART NUMBER	QTY REQD.	NOMENCLATURE OR DESCRIPTION
1	20543	1	BLADE HOLDER WELDMENT
2	10421	2	UP LIFT BLADE
3	10313	2	BLADE BOLT GR.8
4	10312	2	BLADE BOLT LOCKWASHER GR.8
5	10311	2	BLADE BOLT NUT GR.8

DWG. NO.			REV.	
20301			B	
REV	CHANGE	BY	DATE	ECN
IR	INITIAL RELEASE	M.J.T	11/4/97	----
A	CREATE VIEWS	M.J.T	6/11/98	0381
B	REMOVE BOLT FROM Q-HUB	T.O.B.	11/24/99	0670



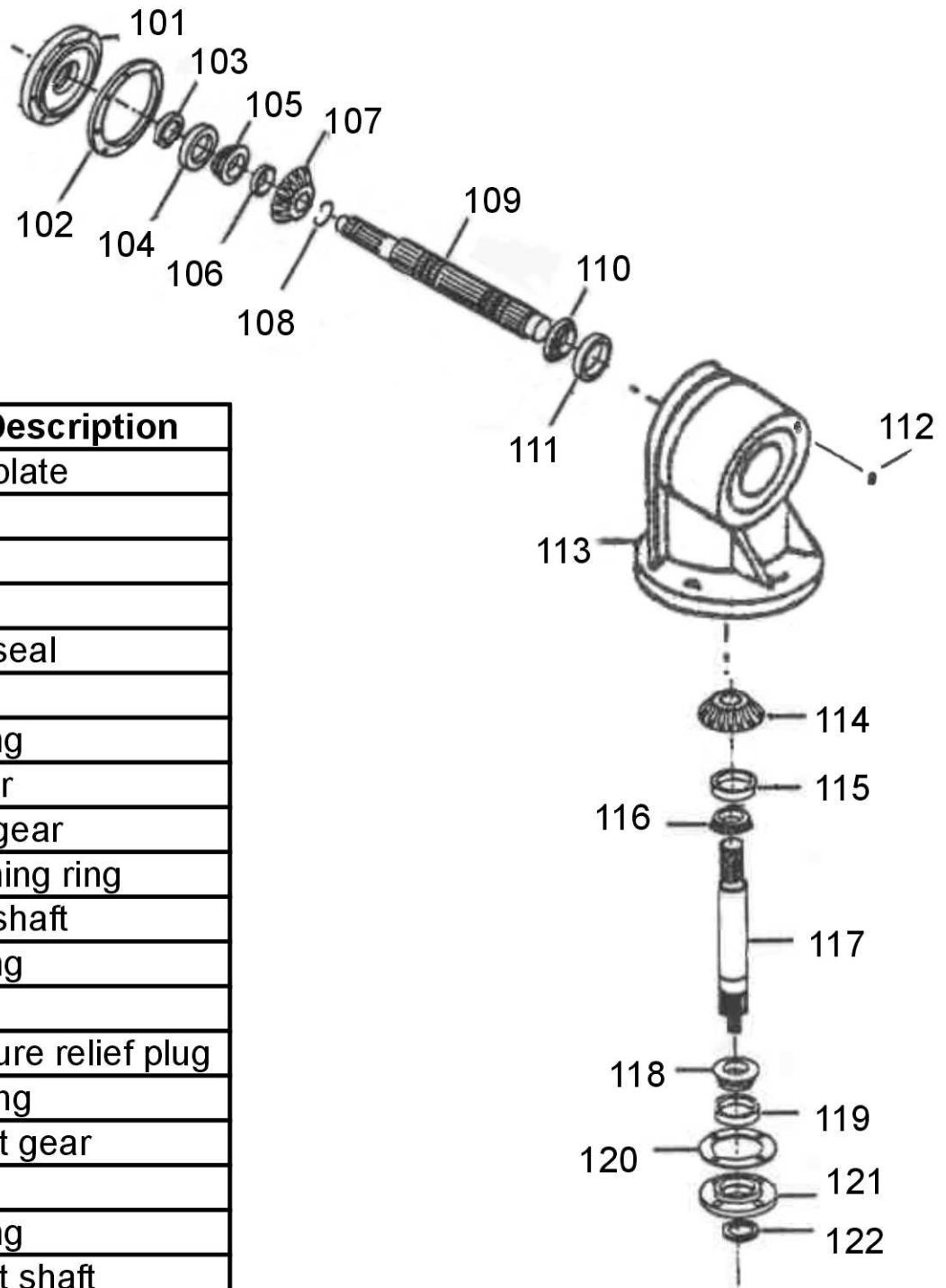
DRAWN BY	M.J.T	6/11/98	HARDEE BY EVH MFG CO LORIS S.C.	
CHECKED BY				
MATERIAL	R.M.N.		APPLICATION	OLD PART #
MANUFACTURED BY HARDEE WILLIAMS			DESCRIPTION BLADE HOLDER SUBASSEMBLY	
DO NOT SCALE	A	DWG. NO.	20301	
	DWG SIZE			

All Dimensions in Inches Unless Otherwise Specified
Dimensions in [] are in Millimeters

Tolerances Unless Otherwise Specified
Fractional Dimensions $\pm 1/16"$ Angular Dimensions $\pm 1^\circ$
Decimal Dim. to Limits Shown All holes to be $\begin{matrix} +0 \\ -1/32 \end{matrix}$

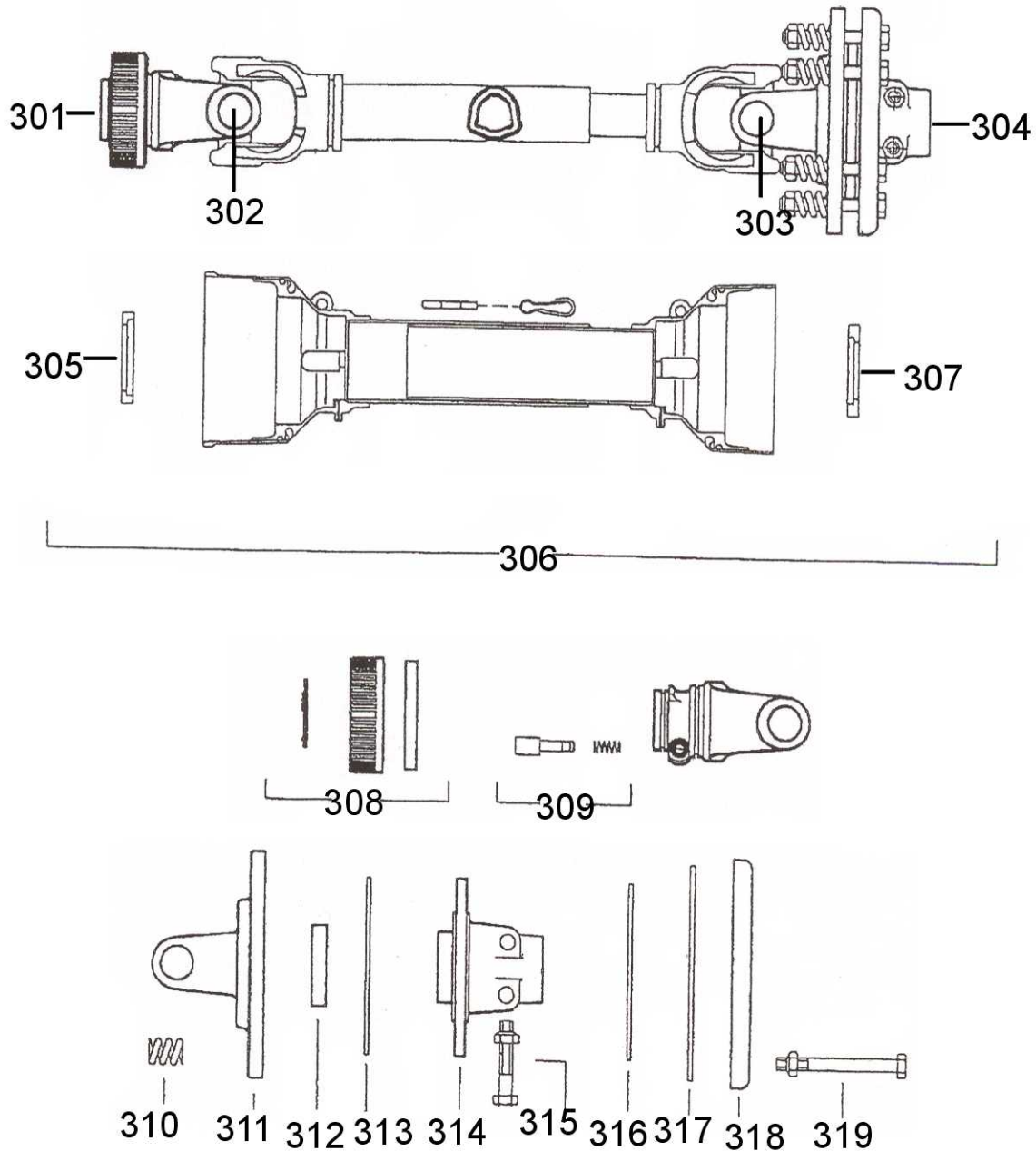
10327 Gearbox

(90H.P. Gearbox 1: 1.47 Ratio)



Key #	Part No.	Part Description
101	15768	Face plate
102	15732	Shim
	15733	Shim
	15734	Shim
103	15715	Input seal
104	11240	Cup
105	11241	Bearing
106	15606	Spacer
107	10683	Input gear
108	10353	Retaining ring
109	15602	Input shaft
110	11241	Bearing
111	11240	Cup
112	15664	Pressure relief plug
113	11516	Housing
114	10682	Output gear
115	11243	Cup
116	10352	Bearing
117	15600	Output shaft
118	10352	Bearing
119	11242	Cup
120	15706	Shim
121	15705	Bottom cover
122	10354	Output seal

11567 Driveshaft



Key #	Part No.	Description	Key #	Part No.	Description
301	11440	Yoke, Tractor end	311	15806	Flange yoke
302	15559	Cross kit	312	15562	Bushing
303	15559	Cross kit	313	11204	Clutch facing
304	11444	Clutch, complete	314	15802	Center hub
305	15800	Shield bearing	315	15803	Clutch bolt
306	11749	Shield kit complete	316	11204	Clutch facing
307	15801	Shield bearing	317	15563	Inner plate
308	15786	Twist collar kit	318	15799	Pressure plate
309	15579	Push pin complete	319	15794	Clutch bolt
310	15561	Spring			