

Item	Part Number	Qty.	Description								
1	10002	2	HEX BOLT, 1/4-20 X 1 Gr.5 PLATED	50	11860	10	TIE STRAP, (14" LG.) (100/PK)	99	23019	1	HITCH FRAME WELDMENT
2	10003	1	HEX BOLT, 1/4" X 1-1/2" Gr. 5 PLATED	51	13214	2	SAFETY CHAIN CLEVIS WITH PIN	100	23038	1	STAND WELDMENT
3	10006	8	HEX BOLT, 1/4" x 3" Gr.5 PLATED	52	13532	4	CLAMP, SIZE 3/4" TO 1-3/4" X 9/16"	101	23048	2	SPACER
4	10032	1	HEX BOLT, 3/8 x 1-1/2 Gr.5 PLATED	53	13535	6	STAIN. STEEL CLAMP, 1-1/2" TO 1-3/4"	102	23050	1	CABLE ROLLER
5	10052	8	HEX BOLT, 7/16 x 2 Gr.5 PLATED	54	13557	1	3/4"-M-NPT X 3/4" Metal Hose Barb	103	23073	1	WELDMENT, CABLE BRACKET
6	10071	8	HEX BOLT, 1/2" X 1" Gr.5 PLATED	55	13563	1	1-1/4"-M-NPT X 1-1/2" Metal Hose Barb	104	23084	1	WELDMENT, Cable Bracket, DB
7	10092	4	HEX BOLT, 5/8" X 2" Gr.5 PLATED	56	13632	1	METAL CAP, 1/4" NPT	105	23093	1	WELDMENT, Weight Box , DB
8	10093	2	HEX BOLT, 5/8" X 2-1/2" Gr.5 PLATED	57	13757	1	20-M-NPT X 12-F-NPT Reducer	106	23101	1	WELDMENT, OIL TANK
9	10096	1	HEX BOLT, 5/8"-11 X 4" Gr.5 PLATED	58	13899	4	#6 JIC CAP	107	23129	1	SHAFT, Counter Weight, DB
10	10153	9	LOCKNUT, 1/4" PLATED	59	13906	4	ELBOW, 6-M-JIC X 8-M-NPT 90 DEG	108	23130	1	PIVOT SLEEVE (13-5/8" LONG)
11	10154	1	LOCKNUT, 5/16"-18 PLATED	60	13976	3	12-M-JIC X 12-M-NPT 90 Deg. Elbow	109	23131	2	END CAP WELDMENT
12	10164	2	HEX NUT, 1/2" (Gr.5 PLATED)	61	15015	2	PIN - CYLINDER LINK	110	23136	2	PRESSURE FLANGE
13	10166	11	LOCKNUT, 5/8"-11 PLATED	62	15241	1	HYDRAULIC VANE MOTOR	111	23137	2	FLUID CONNECTOR
14	10173	1	CASTLE FLANGE NUT, 1"	63	15252	8	3/4" Hose Clamp Half	112	23140	2	TENSION BOLT
15	10175	1	LOCKNUT, 3/8"-16 Gr.5 PLATED	64	15255	4	COVER PLATE, HOSE CLAMP	113	23141	2	PIN, 1" X 5-3/8"
16	10176	6	LOCKNUT, 1/2" (Gr.5 PLATED)	65	15268	2	FITTING, 3/4" HB X 12-F-JIC	114	23142	1	PIN, (1" X 6-7/8")
17	10181	1	LOCK WASHER, 5/16" PLATED	66	15269	1	3/4" 140" HYDRAULIC PRESSURE HOSE	115	23146	1	SUCTION HOSE (1-1/2" X 24")
18	10183	8	LOCK WASHER, 7/16" PLATED	67	15270	3	DECAL, MODEL DB4048	116	23147	2	CABLE, 1/4" X 82" LG.
19	10184	8	LOCKWASHER, 1/2" PLATED	68	15845	1	DECAL KIT, HYDRAULIC	117	23149	1	WELDMENT, LIFT CHAIN
20	10185	6	LOCKWASHER, 5/8" PLATED	69	15845-1	1	DANGER DECAL (KIT 15845)	118	23157	1	RETURN HOSE, 3/4 X 42"
21	10200	4	FLATWASHER, 1/4" PLATED	70	15845-10	1	WARNING DECAL (KIT 15845)	119	23159	1	WELDMENT, LIFT ARM ASSEMBLY
22	10202	2	FLATWASHER, 3/8" PLATED	71	15845-11	3	WARNING DECAL (KIT 15845)	120	23202	1	WELDMENT, CABLE BRACKET
23	10204	8	FLATWASHER, 1/2" USS PLATED	72	15845-15	1	DANGER DECAL (KIT 15845)	121	23345	1	HEAD MOUNTING BRACKET WELDMENT
24	10207	8	FLATWASHER, 1" PLATED	73	15845-16	3	DANGER DECAL (KIT 15845)	122	23359	1	Head Mount Bracket Weldment
25	10247	1	Cotter Pin 3/16" X 1 1/4" Plated	74	15845-2	1	DANGER DECAL (KIT 15845)	123	23443	1	BLADE Holder W/Blades, W/Anti Wrap Hub
26	10252	8	COTTER PIN, 3/16" X 2" PLATED	75	15845-3	4	WARNING DECAL (KIT 15845)				
27	10307	2	HITCH PIN, CATEGORY 1	76	15845-8	1	DANGER DECAL (KIT 15845)				
28	10322	1	GREASE FITTING, 1/4-28 THREAD	77	15845-9	1	WARNING DECAL (KIT 15845)				
29	10335	1	HARDEE RED PAINT - (NOT SHOWN)	78	15852	2	RED REFLECTOR DECAL				
30	10339	2	POP RIVET	79	15853	2	YELLOW REFLECTOR DECAL				
31	10346	2	LYNCH PIN W/SNAP RING, CAT. 1 & 2	80	15854	1	MANUAL HOLDER CANISTER				
32	10363	2	Bearing for Cable Roller	81	15860	2	U-NUT, 1/4"-20 UNC				
33	10365	2	Clamp, 1/2" Plated Steel Loom	82	16012	1	Fitting, 12 F50X-S Strt. Thread Conn.				
34	10368	1	GATE VALVE, 1-1/4"	83	16100	1	SIGHT GAUGE, 5", WITH THERMOMETER				
35	10373	1	HYDRAULIC OIL	84	16138	4	LOCKNUT, 7/16"-14 NC with Nylon Insert				
36	10384	8	Wire Rope Clip, 1/4" Forged	85	16577	1	MOTOR HOUSING ASSEMBLY, HYDRAULIC				
37	10386	2	O-RING, 1/8"	86	16682	2	RELIEF VALVE ASM - 2700PSI - Pump Mounted				
38	10387	2	O-RING, 1/8"	87	16683	1	Relief Valve 2700PSI - w/TAMPER PROOF CAP				
39	10388	1	O-RING, 1/8" X 5"	88	16684	1	Fitting, #12 HB/ M-ORB Straight				
40	10390	1	CLIP PIN (1/8 x 2)	89	16685	8	SCREW, 7/16-14 X 2-1/4 LONG - Zinc Plated				
41	10393	1	UNIVERSAL CLIP PIN	90	16686	8	LOCK WASHER, Zinc Plated 7/16 High Collar				
42	10501	1	FLOW EZY BREATHER	91	16697	1	#4 ORB HOLLOW HEX PLUG				
43	10646	2	GREASE	92	16943	1	CYLINDER, 3" X 18"				
44	11005	1	DECAL, WARNING - THROWN OBJECTS	93	16944	1	CYLINDER, 3" X 30"				
45	11010	3	DECAL, LARGE HARDEE LOGO	94	20031	1	ACCESS COVER				
46	11675	1	FILTER ASSEMBLY, RETURN	95	22701	1	DB4048 Deck Weldment				
47	11703	1	3/4" STREET ELBOW	96	22707	2	DB4048 Rubber Belting Kit				
48	11727	1	SERIAL NUMBER PLATE	97	22712	1	WELDMENT, EXTENSION ARM, DB4048				
49	11850	1	DECAL, WEB SITE	98	22739	1	3/4" x 146" RETURN HOSE				

DWG. NO.	22700			REV.	I
REV	CHANGE	BY	DATE	ECN	
IR	INITIAL RELEASE	R.T.N.	8/16/04	---	
F	Manufacture Cylinder Change	T.B.B.	5/10/16	1655	
G	Pump 15240 Has Changed To Pump 16705.	T.B.B.	12/14/16	1672	
H	Remove Control Stand (23018).	C.K.N.	9/7/17	1687	
I	16943 & 44 WERE 16748 & 49.	M.J.Z.	12/20/24	1789	

Note:
Part #'s "13535 & 16682" have been listed with additional Qty to represent additional pump OPTION - (13535 Actual Qty: 4) (16682 Actual Qty: 1)

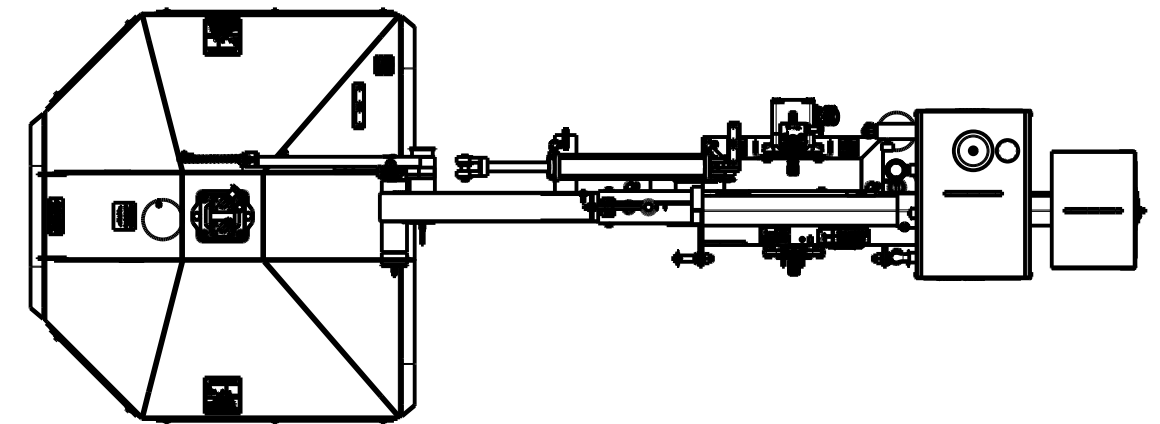
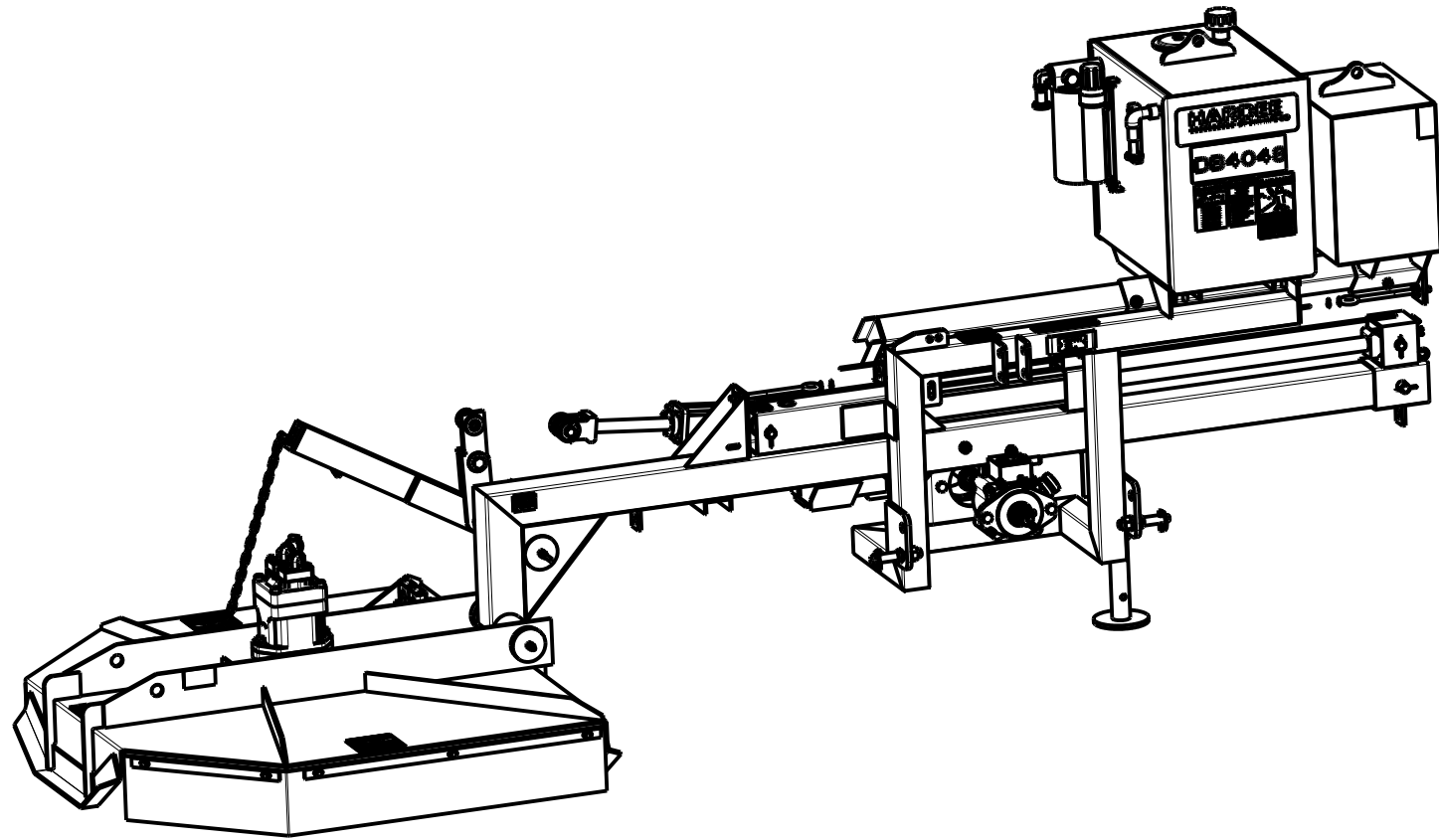
Note:
This list of components is strictly to be viewed as a "BILL OF MATERIALS" of the "COMPLETE" mower. It is not related to any illustration.

DB4048 Complete

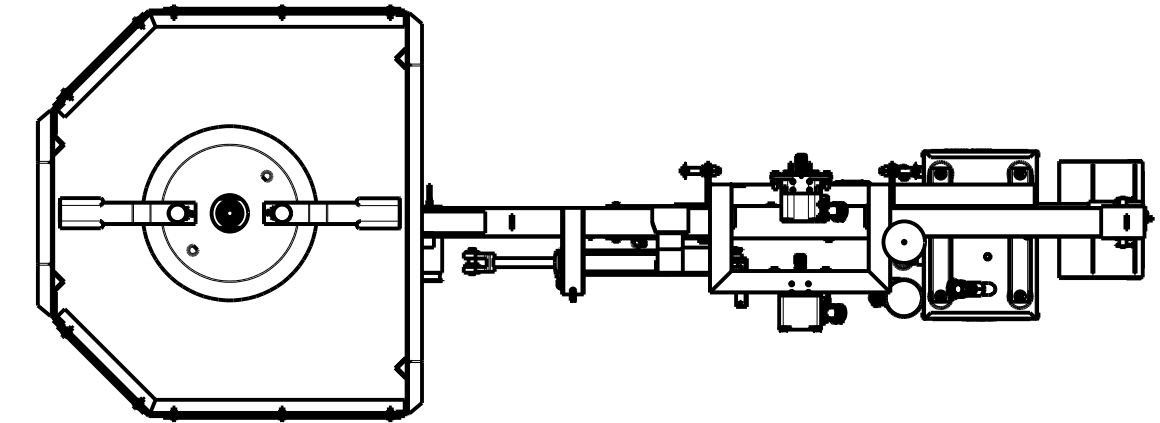
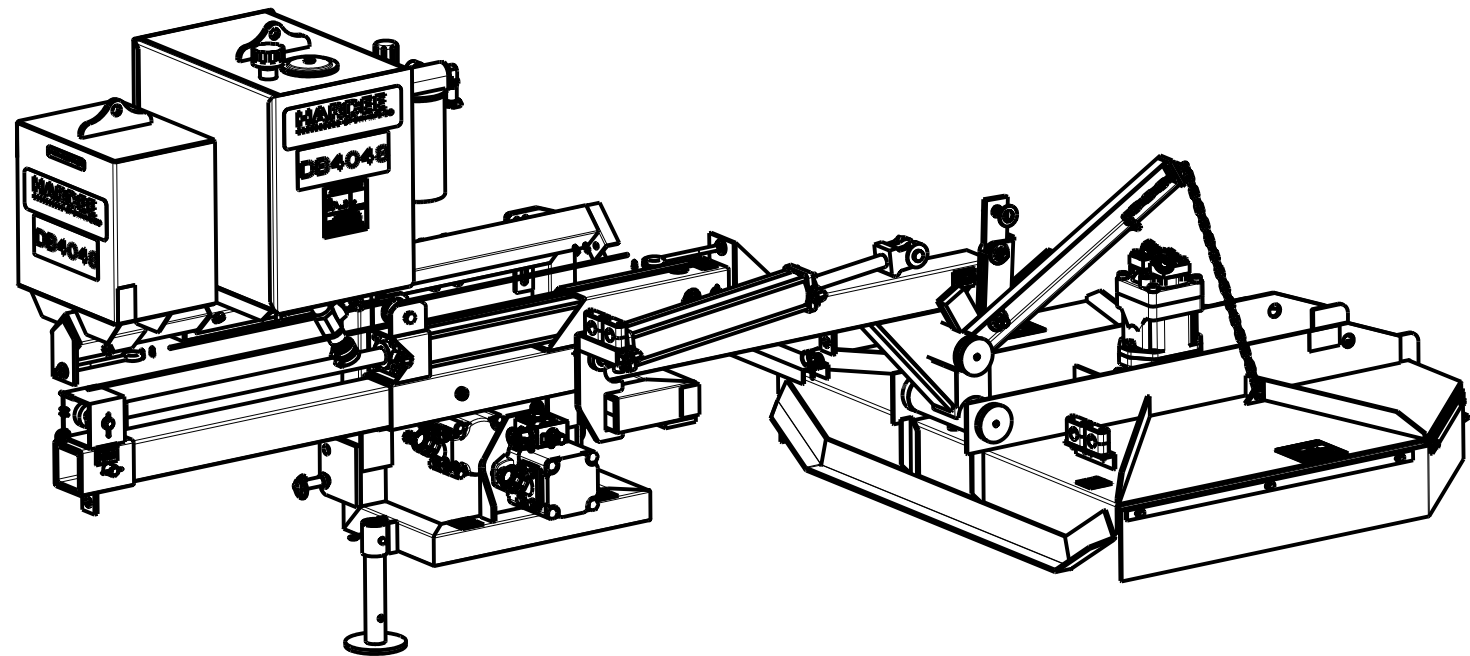
All Dimensions in Inches Unless Otherwise Specified
Dimensions in [] are in Millimeters
Tolerance Unless Otherwise Specified
Fractional Dimensions: 1/16" Angular Dimensions: 1°
Decimal Dim. to Limits Shown All Holes to be +0 -1/32"

MODELED BY	T.B.B.	2/9/15	HARDEE BY EVH MFG. CO.		
DRAWN BY	R.T.N.	2/9/15	LORIS S.C.		
MATERIAL	R.M.N.	N/A	DESCRIPTION	SHEET 1 of 7	
Manufactured By: EVH Mfg. Co., LLC			DO NOT SCALE	B DWG. NO.	22700

DWG. NO.	22700			REV.	I
REV	CHANGE	BY	DATE	ECN	
IR	INITIAL RELEASE	R.T.N.	8/16/04	---	
F	Manufacture Cylinder Change	T.B.B.	5/10/16	1655	
G	Pump 15240 Has Changed To Pump 16705.	T.B.B.	12/14/16	1672	
H	Remove Control Stand (23018).	C.K.N.	9/7/17	1687	
I	SEE SHEETS 1 & 3 -7 FOR CHANGES.	M.J.Z.	12/20/24	1789	



Top View



Bottom View

DB4048 Complete

All Dimensions in Inches Unless Otherwise Specified
 Dimensions in [] are in Millimeters
 Tolerance Unless Otherwise Specified
 Fractional Dimensions: 1/16" Angular Dimensions: 1°
 Decimal Dim. to Limits Shown All Holes to be +0 -1/32"

MODELED BY	T.B.B.	2/9/15	HARDEE BY EVH MFG. CO. LORIS S.C.	
DRAWN BY	R.T.N.	2/9/15		
MATERIAL	R.M.N.	N/A	DESCRIPTION	SHEET 2 of 7
Manufactured By: EVH Mfg. Co., LLC			DB4048 COMPLETE	
DO NOT SCALE	B	DWG. NO.	22700	
	DWG. SIZE			

Item	Part Number	Qty.	Description				
1	10002	2	HEX BOLT, 1/4-20 X 1 Gr.5 PLATED	40	13976	3	12-M-JIC X 12-M-NPT 90 Deg. Elbow
2	10003	1	HEX BOLT, 1/4" X 1-1/2" Gr. 5 PLATED	41	15015	2	PIN - CYLINDER LINK
3	10006	8	HEX BOLT, 1/4" x 3" Gr.5 PLATED	42	15241	1	HYDRAULIC VANE MOTOR
4	10032	1	HEX BOLT, 3/8 x 1-1/2 Gr.5 PLATED	43	15252	8	3/4" Hose Clamp Half
5	10092	2	HEX BOLT, 5/8" X 2" Gr.5 PLATED	44	15255	4	COVER PLATE, HOSE CLAMP
6	10096	1	HEX BOLT, 5/8"-11 X 4" Gr.5 PLATED	45	15268	2	FITTING, 3/4" HB X 12-F-JIC
7	10153	9	LOCKNUT, 1/4" PLATED	46	15270	3	DECAL, MODEL DB4048
8	10164	2	HEX NUT, 1/2" (Gr.5 PLATED)	47	15845-11	3	WARNING DECAL (KIT 15845)
9	10166	9	LOCKNUT, 5/8"-11 PLATED	48	15845-15	1	DANGER DECAL (KIT 15845)
10	10175	1	LOCKNUT, 3/8"-16 Gr.5 PLATED	49	15845-16	3	DANGER DECAL (KIT 15845)
11	10176	6	LOCKNUT, 1/2" (Gr.5 PLATED)	50	15845-2	1	DANGER DECAL (KIT 15845)
12	10200	4	FLATWASHER, 1/4" PLATED	51	15845-3	4	WARNING DECAL (KIT 15845)
13	10202	2	FLATWASHER, 3/8" PLATED	52	15845-8	1	DANGER DECAL (KIT 15845)
14	10204	8	FLATWASHER, 1/2" USS PLATED	53	15845-9	1	WARNING DECAL (KIT 15845)
15	10207	8	FLATWASHER, 1" PLATED	54	15852	2	RED REFLECTOR DECAL
16	10252	8	COTTER PIN, 3/16" X 2" PLATED	55	15853	2	YELLOW REFLECTOR DECAL
17	10307	2	HITCH PIN, CATEGORY 1	56	15854	1	MANUAL HOLDER CANISTER
18	10346	2	LYNCH PIN W/SNAP RING, CAT. 1 & 2	57	15860	2	U-NUT, 1/4"-20 UNC
19	10363	2	Bearing for Cable Roller	58	16100	1	SIGHT GAUGE, 5", WITH THERMOMETER
20	10365	2	Clamp, 1/2" Plated Steel Loom	59	16943	1	CYLINDER, 3" X 18"
21	10368	1	GATE VALVE, 1-1/4"	60	16944	1	CYLINDER, 3" X 30"
22	10384	8	Wire Rope Clip, 1/4" Forged	61	22712	1	WELDMENT, EXTENSION ARM, DB4048
23	10390	1	CLIP PIN (1/8 x 2)	62	23019	1	HITCH FRAME WELDMENT
24	10393	1	UNIVERSAL CLIP PIN	63	23038	1	STAND WELDMENT
25	10501	1	FLOW EZY BREATHER	64	23048	2	SPACER
26	11005	1	DECAL, WARNING - THROWN OBJECTS	65	23050	1	CABLE ROLLER
27	11010	3	DECAL, LARGE HARDEE LOGO	66	23073	1	WELDMENT, CABLE BRACKET
28	11675	1	FILTER ASSEMBLY, RETURN	67	23084	1	WELDMENT, Cable Bracket, DB
29	11703	1	3/4" STREET ELBOW	68	23093	1	WELDMENT, Weight Box , DB
30	11850	1	DECAL, WEB SITE	69	23101	1	WELDMENT, OIL TANK
31	13214	2	SAFETY CHAIN CLEVIS WITH PIN	70	23129	1	SHAFT, Counter Weight, DB
32	13532	3	CLAMP, SIZE 3/4" TO 1-3/4" X 9/16"	71	23140	2	TENSION BOLT
33	13535	4	STAIN. STEEL CLAMP, 1-1/2" TO 1-3/4"	72	23141	2	PIN, 1" X 5-3/8"
34	13557	1	3/4"-M-NPT X 3/4" Metal Hose Barb	73	23142	1	PIN, (1" X 6-7/8")
35	13563	1	1-1/4"-M-NPT X 1-1/2" Metal Hose Barb	74	23147	2	CABLE, 1/4" X 82" LG.
36	13632	1	METAL CAP, 1/4" NPT	75	23149	1	WELDMENT, LIFT CHAIN
37	13757	1	20-M-NPT X 12-F-NPT Reducer	76	23159	1	WELDMENT, LIFT ARM ASSEMBLY
38	13899	4	#6 JIC CAP	77	23202	1	WELDMENT, CABLE BRACKET
39	13906	4	ELBOW, 6-M-JIC X 8-M-NPT 90 DEG				

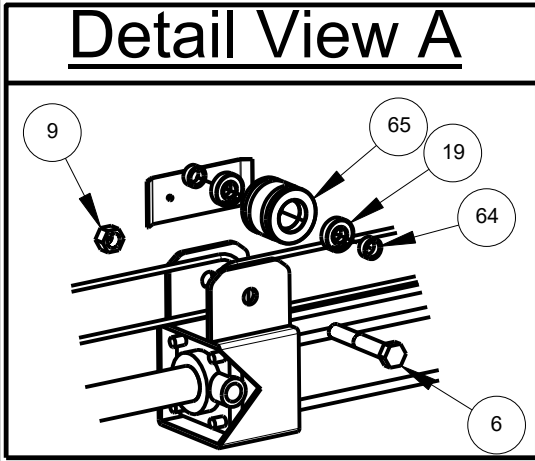
Hitch Frame & Components

DWG. NO.	22700			REV.	I
REV	CHANGE	BY	DATE	ECN	
IR	INITIAL RELEASE	R.T.N.	8/16/04	---	
F	Manufacture Cylinder Change	T.B.B.	5/10/16	1655	
G	Pump 15240 Has Changed To Pump 16705.	T.B.B.	12/14/16	1672	
H	Remove Control Stand (23018).	C.K.N.	9/7/17	1687	
I	16943 & 44 WERE 16748 & 49.	M.J.Z.	12/20/24	1789	

MODELED BY	T.B.B.	2/9/15	HARDEE BY EVH MFG. CO. LORIS S.C.	
DRAWN BY	R.T.N.	2/9/15	DESCRIPTION	SHEET 3 of 7
MATERIAL	R.M.N.	N/A	DB4048 COMPLETE	
All Dimensions in Inches Unless Otherwise Specified Dimensions in [] are in Millimeters Tolerance Unless Otherwise Specified Fractional Dimensions: 1/16" Angular Dimensions: 1° Decimal Dim. to Limits Shown All Holes to be +0 -1/32"			DO NOT SCALE	DWG. NO. 22700

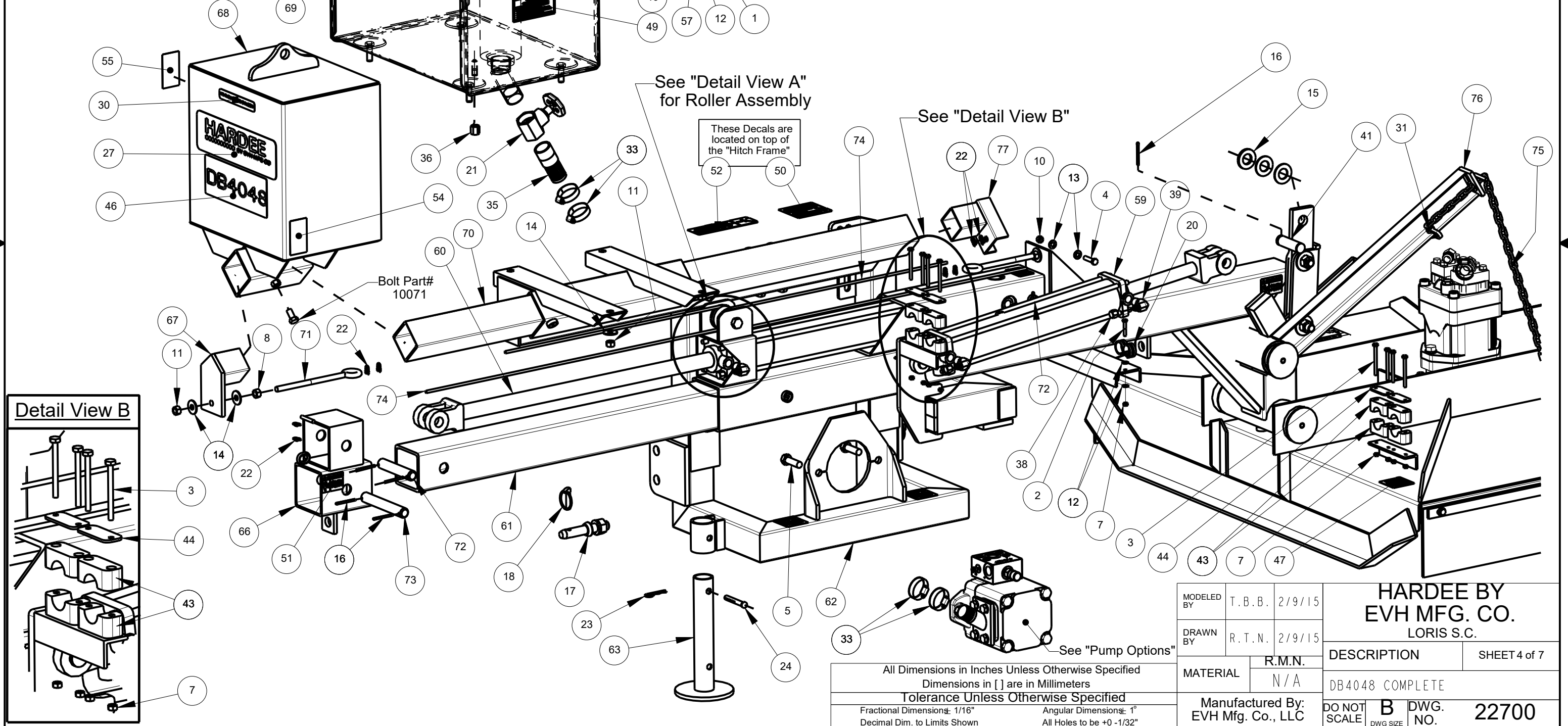
Manufactured By:
EVH Mfg. Co., LLC

Detail View A

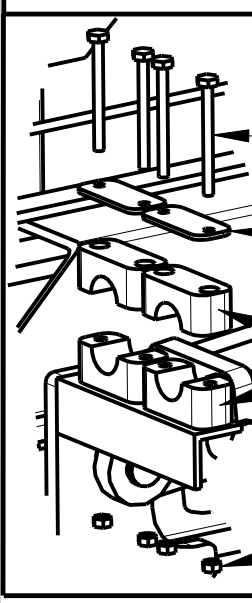


Hitch Frame & Components

DWG. NO.	22700		REV.	I
REV	CHANGE	BY	DATE	ECN
IR	INITIAL RELEASE	R.T.N.	8/16/04	---
F	Manufacture Cylinder Change	T.B.B.	5/10/16	1655
G	Pump 15240 Has Changed To Pump 16705.	T.B.B.	12/14/16	1672
H	Remove Control Stand (23018).	C.K.N.	9/7/17	1687
I	16943 & 44 WERE 16748 & 49.	M.J.Z.	12/20/24	1789



Detail View B



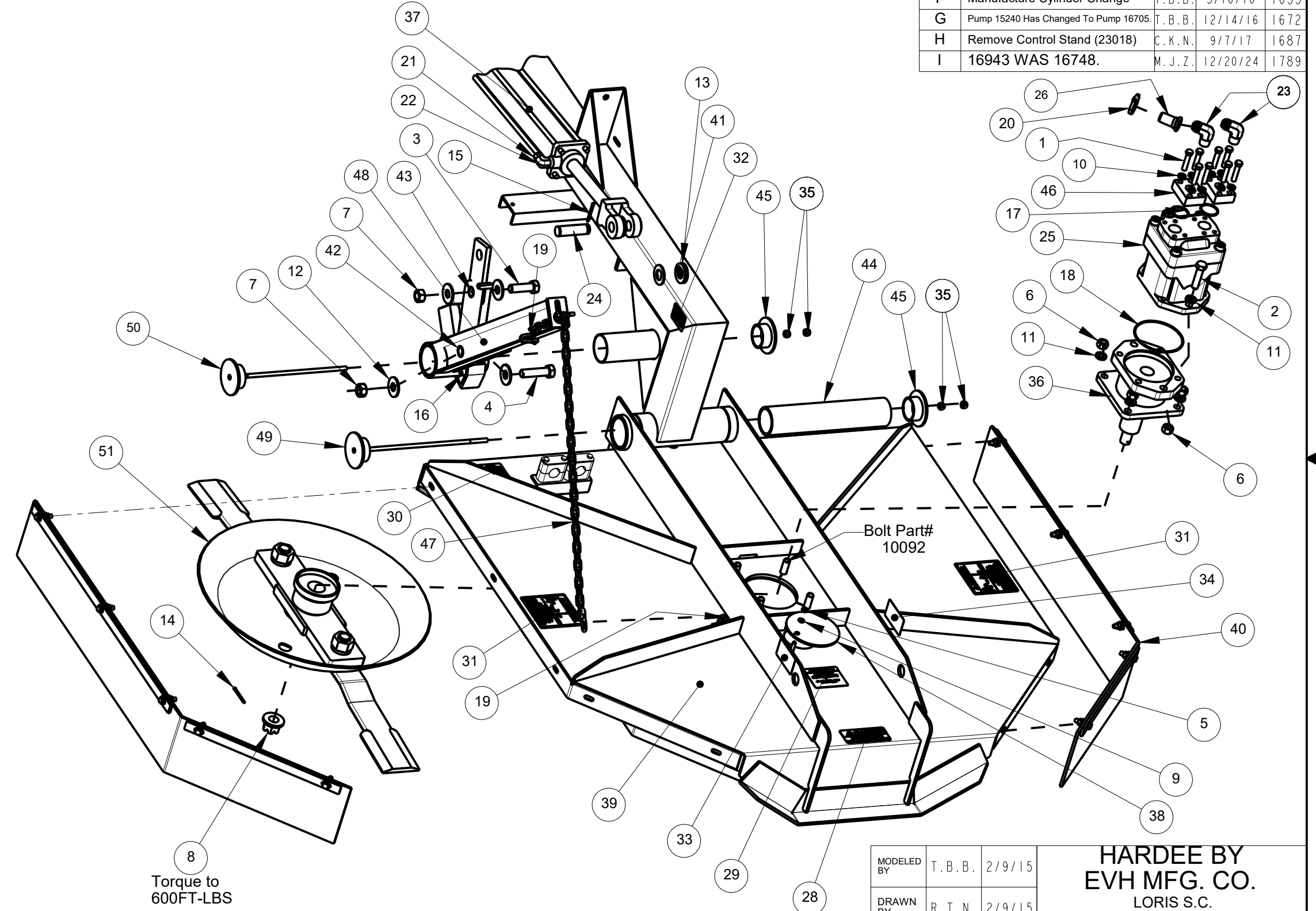
All Dimensions in Inches Unless Otherwise Specified
 Dimensions in [] are in Millimeters
 Tolerance Unless Otherwise Specified
 Fractional Dimensions: 1/16" Angular Dimensions: 1°
 Decimal Dim. to Limits Shown All Holes to be +0 -1/32"

MODELED BY	T.B.B.	2/9/15	HARDEE BY EVH MFG. CO. LORIS S.C.	
DRAWN BY	R.T.N.	2/9/15		
MATERIAL	R.M.N.	N/A	DESCRIPTION	SHEET 4 of 7
Manufactured By: EVH Mfg. Co., LLC			DB4048 COMPLETE	
DO NOT SCALE	B	DWG. NO.	22700	

Item	Part Number	Qty.	Description
1	10052	8	HEX BOLT, 7/16 x 2 Gr.5 PLATED
2	10093	2	HEX BOLT, 5/8" X 2-1/2" Gr.5 PLATED
3	10112	1	HEX BOLT, 3/4" X 2-1/2" Gr.5 PLATED
4	10113	1	HEX BOLT, 3/4" X 3" Gr.5 PLATED
5	10154	1	LOCKNUT, 5/16"-18 PLATED
6	10166	6	LOCKNUT, 5/8"-11 PLATED
7	10168	2	LOCKNUT, 3/4"-10 Gr.5 PLATED
8	10173	1	CASTLE FLANGE NUT, 1"
9	10181	1	LOCK WASHER, 5/16" PLATED
10	10183	8	LOCK WASHER, 7/16" PLATED
11	10185	6	LOCKWASHER, 5/8" PLATED
12	10206	4	FLATWASHER, 3/4" PLATED
13	10207	8	FLATWASHER, 1" PLATED
14	10247	1	Cotter Pin 3/16" X 1 1/4" Plated
15	10252	2	COTTER PIN, 3/16" X 2" PLATED
16	10322	1	GREASE FITTING, 1/4-28 THREAD
17	10386	2	O-RING, 1/8"
18	10388	1	O-RING, 1/8" X 5"
19	13214	2	SAFETY CHAIN CLEVIS WITH PIN
20	13532	1	CLAMP, SIZE 3/4" TO 1-3/4" X 9/16"
21	13899	2	#6 JIC CAP
22	13906	2	ELBOW, 6-M-JIC X 8-M-NPT 90 DEG
23	13976	2	12-M-JIC X 12-M-NPT 90 Deg. Elbow
24	15015	2	PIN - CYLINDER LINK
25	15241	1	HYDRAULIC VANE MOTOR
26	15268	1	FITTING, 3/4" HB X 12-F-JIC
27	15845	1	DECAL KIT, HYDRAULIC
28	15845-1	1	DANGER DECAL (KIT 15845)
29	15845-10	1	WARNING DECAL (KIT 15845)
30	15845-11	1	WARNING DECAL (KIT 15845)
31	15845-16	2	DANGER DECAL (KIT 15845)
32	15845-3	2	WARNING DECAL (KIT 15845)
33	15852	1	RED REFLECTOR DECAL
34	15853	1	YELLOW REFLECTOR DECAL
35	16138	4	LOCKNUT, 7/16"-14 NC with Nylon Insert
36	16577	1	MOTOR HOUSING ASSEMBLY, HYDRAULIC
37	16943	1	CYLINDER, 3" X 18"
38	20031	1	ACCESS COVER
39	22701	1	DB4048 Deck Weldment
40	22707	2	DB4048 Rubber Belting Kit
41	22712	1	WELDMENT, EXTENSION ARM, DB4048
42	23123	1	BUSHING FOR LIFT ARM (.824 I.D. X 1 1/2" LG.)
43	23124	1	BUSHING FOR LIFT ARM (.824 I.D. X 1 1/4" LG.)
44	23130	1	PIVOT SLEEVE (13-5/8" LONG)
45	23131	2	END CAP WELDMENT
46	23136	2	PRESSURE FLANGE
47	23149	1	WELDMENT, LIFT CHAIN
48	23159	1	WELDMENT, LIFT ARM ASSEMBLY
49	23345	1	HEAD MOUNTING BRACKET WELDMENT
50	23359	1	Head Mount Bracket Weldment
51	23443	1	BLADE Holder W/Blades, W/Anti Wrap Hub

Belting, Motor & Blade Holder

DWG. NO.	22700		REV.	I
REV	CHANGE	BY	DATE	ECN
IR	INITIAL RELEASE	R.T.N.	8/16/04	---
F	Manufacture Cylinder Change	T.B.B.	5/10/16	1655
G	Pump 15240 Has Changed To Pump 16705	T.B.B.	12/14/16	1672
H	Remove Control Stand (23018)	C.K.N.	9/7/17	1687
I	16943 WAS 16748.	M.J.Z.	12/20/24	1789



All Dimensions in Inches Unless Otherwise Specified
 Dimensions in [] are in Millimeters
 Tolerance Unless Otherwise Specified
 Fractional Dimensions: 1/16" Angular Dimensions: 1°
 Decimal Dim. to Limits Shown All Holes to be +0 -1/32"

MODELED BY	T.B.B.	2/9/15
DRAWN BY	R.T.N.	2/9/15
MATERIAL	R.M.N.	N/A
Manufactured By: EVH Mfg. Co., LLC		

HARDEE BY EVH MFG. CO. LORIS S.C.	
DESCRIPTION	SHEET 5 of 7
DB4048 COMPLETE	
DO NOT SCALE	DWG. NO. 22700

Hydraulic Schematic

Item	Part Number	Qty.	Description				
1	10071	8	HEX BOLT, 1/2" X 1" Gr.5 PLATED	26	16683	1	Relief Valve 2700PSI - w/TAMPER PROOF CAP
2	10092	4	HEX BOLT, 5/8" X 2" Gr.5 PLATED	27	16684	1	Fitting, #12 HB/ M-ORB Straight
3	10166	4	LOCKNUT, 5/8"-11 PLATED	28	16685	8	SCREW, 7/16-14 X 2-1/4 LONG - Zinc Plated
4	10184	8	LOCKWASHER, 1/2" PLATED	29	16686	8	LOCK WASHER, Zinc Plated 7/16 High Collar
5	10368	1	GATE VALVE, 1-1/4"	30	16697	1	#4 ORB HOLLOW HEX PLUG
6	10373	1	HYDRAULIC OIL	31	16705	1	HYDRAULIC PUMP, 1000 RPM
7	10387	2	O-RING, 1/8"	32	16943	1	CYLINDER, 3" X 18"
8	10501	1	FLOW EZY BREATHER	33	16944	1	CYLINDER, 3" X 30"
9	10646	2	GREASE	34	22739	1	3/4" x 146" RETURN HOSE
10	11675	1	FILTER ASSEMBLY, RETURN	35	23101	1	WELDMENT, OIL TANK
11	11703	1	3/4" STREET ELBOW	36	23137	2	FLUID CONNECTOR
12	11775	1	HYDRAULIC PUMP, 540RPM	37	23146	1	SUCTION HOSE (1-1/2" X 24")
13	13532	3	CLAMP, SIZE 3/4" TO 1-3/4" X 9/16"	38	23157	1	RETURN HOSE, 3/4 X 42"
14	13535	6	STAIN. STEEL CLAMP, 1-1/2" TO 1-3/4"				
15	13557	1	3/4"-M-NPT X 3/4" Metal Hose Barb				
16	13563	1	1-1/4"-M-NPT X 1-1/2" Metal Hose Barb				
17	13632	1	METAL CAP, 1/4" NPT				
18	13757	1	20-M-NPT X 12-F-NPT Reducer				
19	13906	4	ELBOW, 6-M-JIC X 8-M-NPT 90 DEG				
20	13976	1	12-M-JIC X 12-M-NPT 90 Deg. Elbow				
21	15241	1	HYDRAULIC VANE MOTOR				
22	15268	1	FITTING, 3/4" HB X 12-F-JIC				
23	15269	1	3/4" 140" HYDRAULIC PRESSURE HOSE				
24	16012	1	Fitting, 12 F50X-S Strt. Thread Conn.				
25	16682	2	RELIEF VALVE ASM - 2700PSI - Pump Mounted				

DWG. NO.	22700			REV.	I
REV	CHANGE	BY	DATE	ECN	
IR	INITIAL RELEASE	R.T.N.	8/16/04	---	
F	Manufacture Cylinder Change	T.B.B.	5/10/16	1655	
G	Pump 15240 Has Changed To Pump 16705.	T.B.B.	12/14/16	1672	
H	Remove Control Stand (23018).	C.K.N.	9/7/17	1687	
I	16943 & 44 WERE 16748 & 49.	M.J.Z.	12/20/24	1789	

All Dimensions in Inches Unless Otherwise Specified
 Dimensions in [] are in Millimeters
Tolerance Unless Otherwise Specified
 Fractional Dimensions: 1/16" Angular Dimensions: 1°
 Decimal Dim. to Limits Shown All Holes to be +0 -1/32"

MODELED BY	T.B.B.	2/9/15	HARDEE BY EVH MFG. CO.	
DRAWN BY	R.T.N.	2/9/15	LORIS S.C.	
MATERIAL	R.M.N.	N/A	DESCRIPTION	SHEET 6 of 7
			DB4048 COMPLETE	
Manufactured By: EVH Mfg. Co., LLC			DO NOT SCALE	DWG. NO. 22700

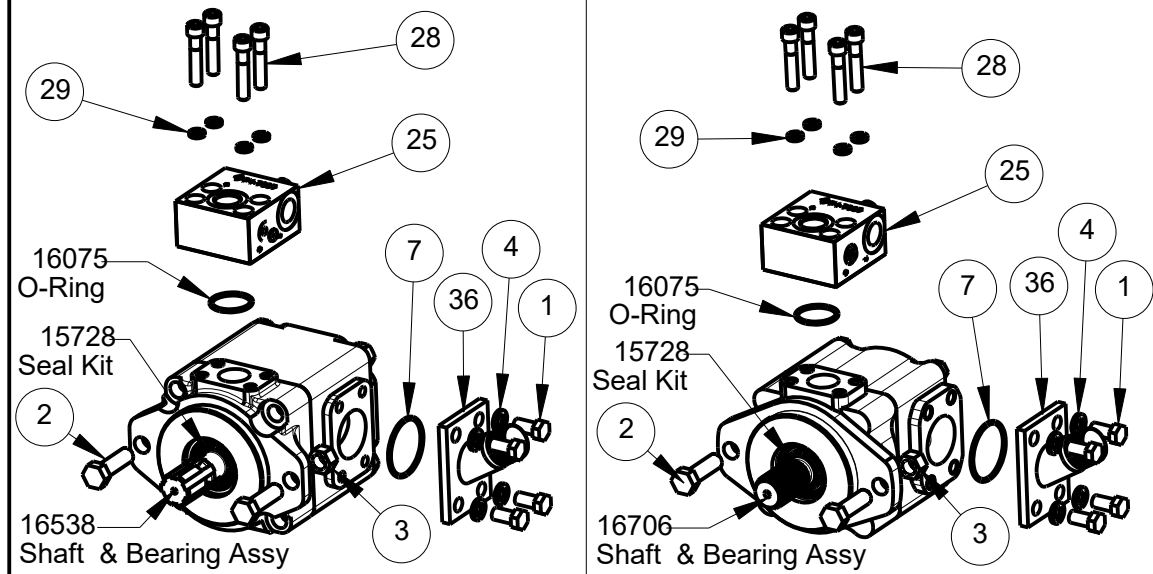
Pump Options

Hydraulic Schematic

DWG. NO.	22700		REV.	I
REV	CHANGE	BY	DATE	ECN
IR	INITIAL RELEASE	R.T.N.	8/16/04	---
F	Manufacture Cylinder Change	T.B.B.	5/10/16	1655
G	Pump 15240 Has Changed To Pump 16705.	T.B.B.	12/14/16	1672
H	Remove Control Stand (23018).	C.K.N.	9/7/17	1687
I	16943 & 44 WERE 16748 & 49.	M.J.Z.	12/20/24	1789

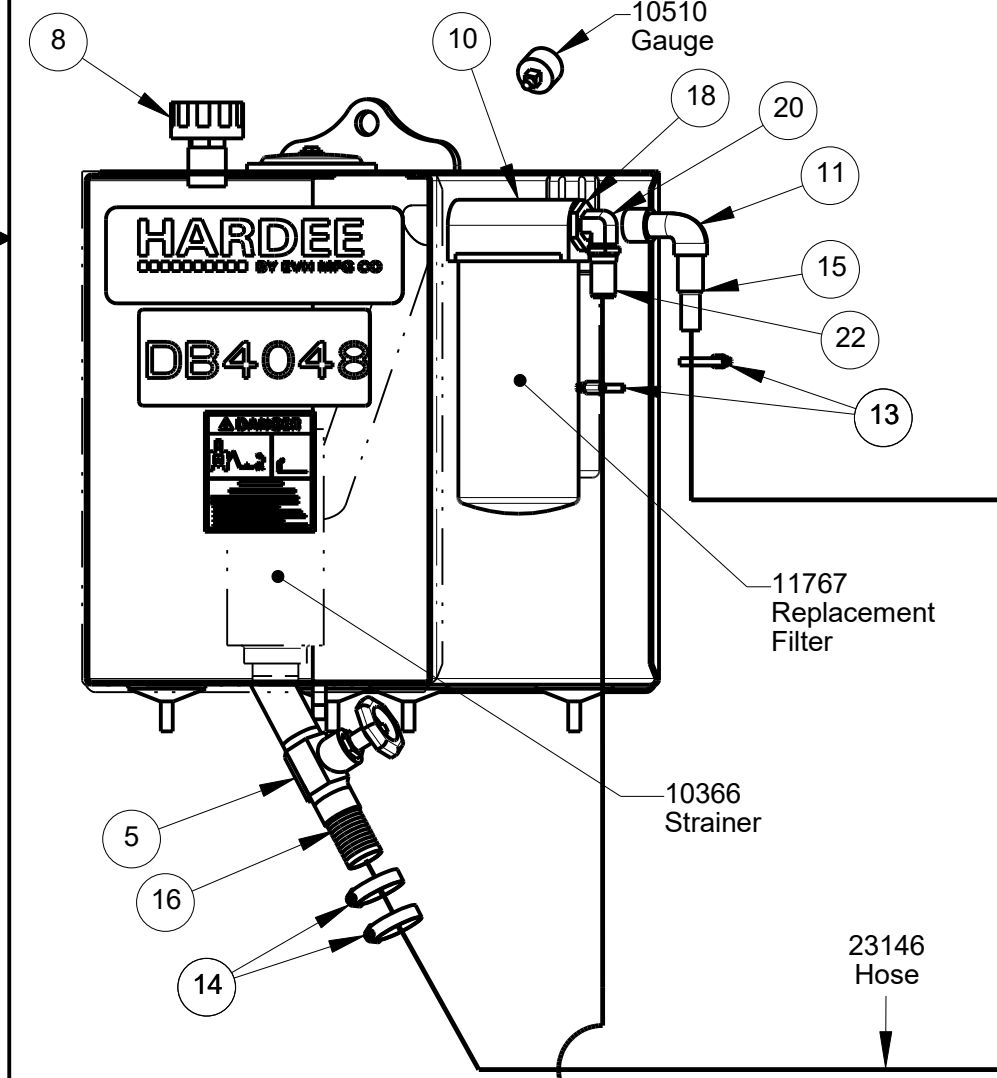
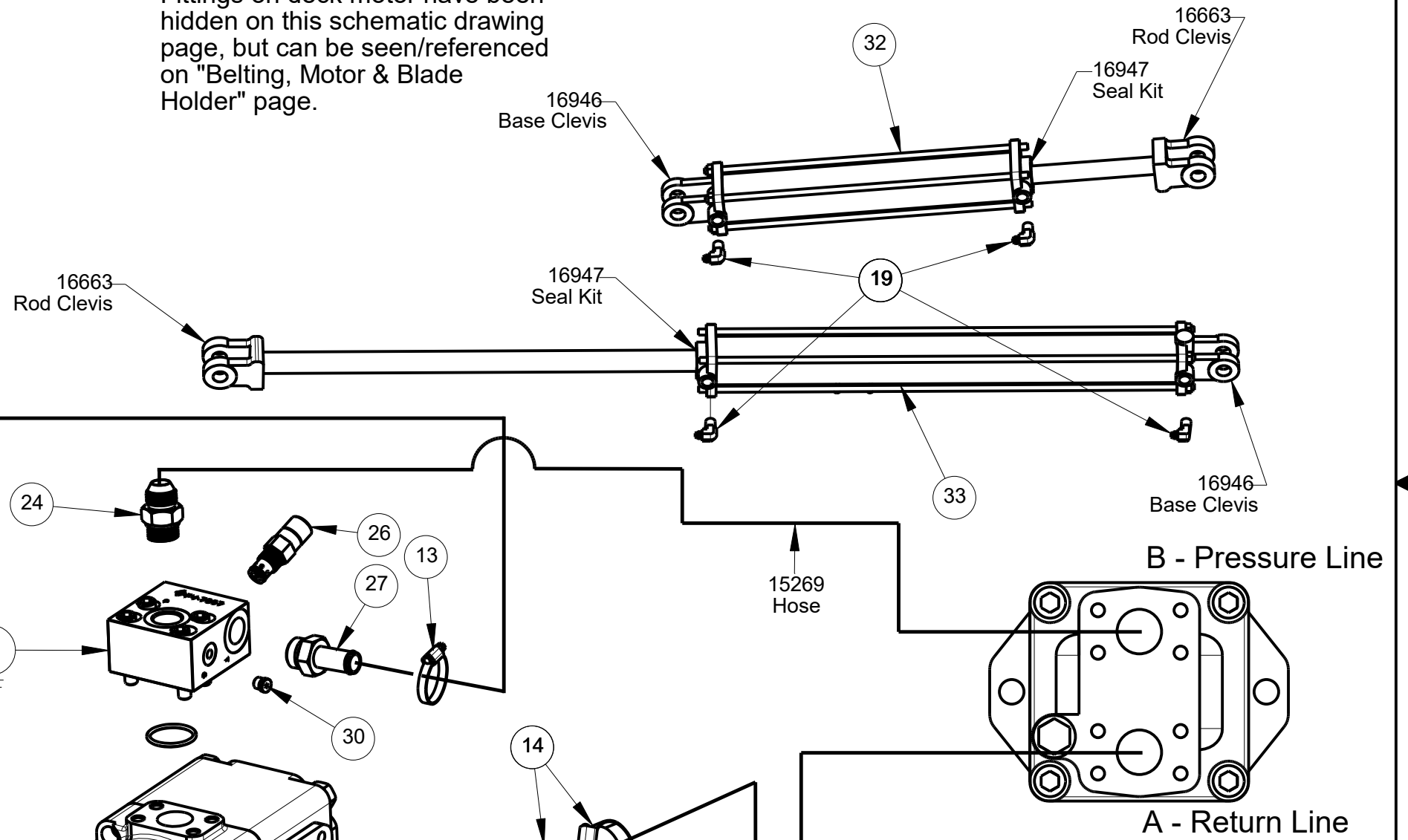
540 RPM - P/N: 11775

1000 RPM - P/N: 16705



Note:

Fittings on deck motor have been hidden on this schematic drawing page, but can be seen/referenced on "Belting, Motor & Blade Holder" page.



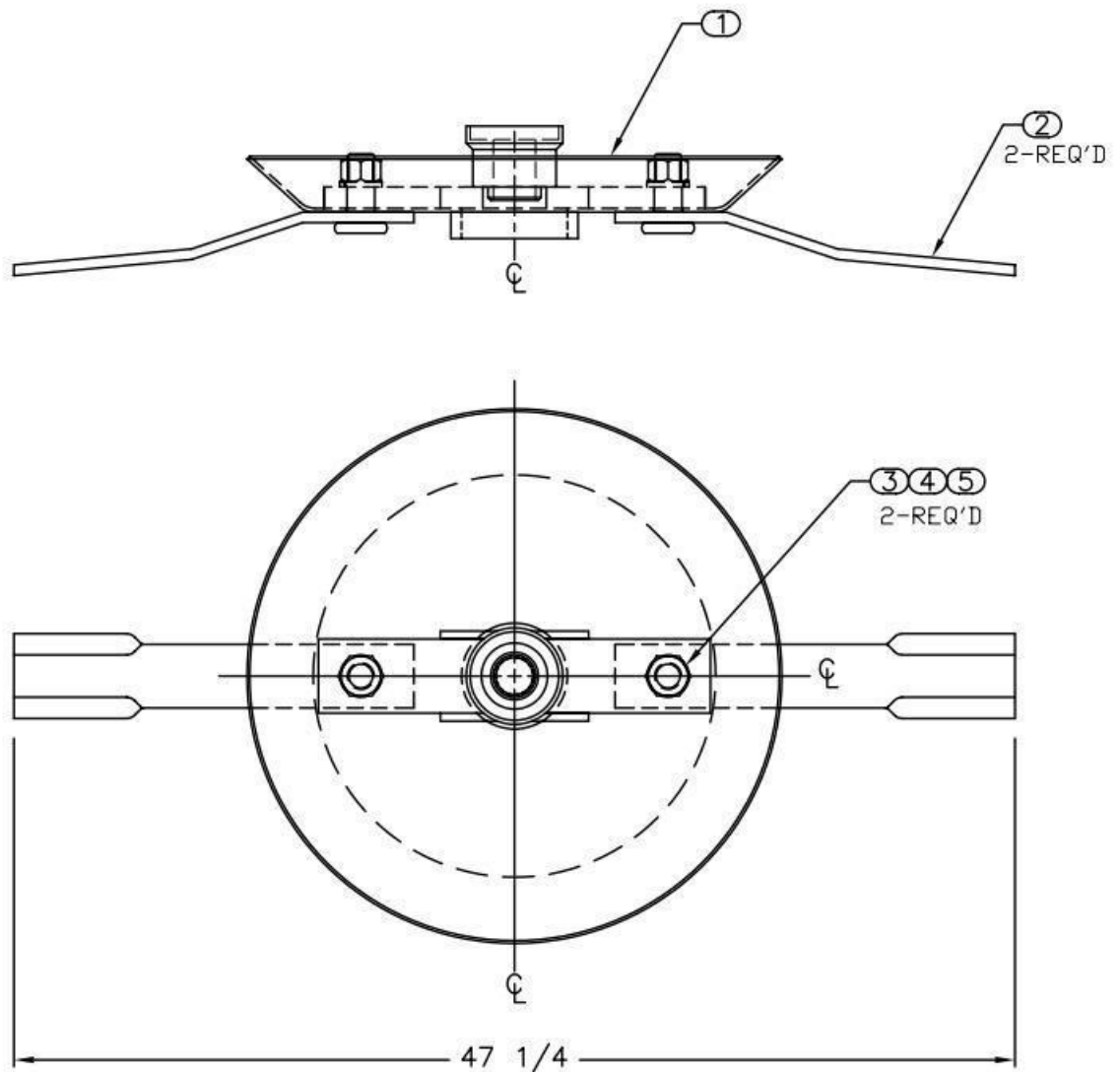
All Dimensions in Inches Unless Otherwise Specified
 Dimensions in [] are in Millimeters
 Tolerance Unless Otherwise Specified
 Fractional Dimensions: 1/16" Angular Dimensions: 1°
 Decimal Dim. to Limits Shown All Holes to be +0 -1/32"

MODELED BY	T.B.B.	2/9/15	HARDEE BY EVH MFG. CO. LORIS S.C.	
DRAWN BY	R.T.N.	2/9/15		
MATERIAL	R.M.N.	N/A	DESCRIPTION	SHEET 7 of 7
Manufactured By: EVH Mfg. Co., LLC			DB4048 COMPLETE	
DO NOT SCALE	B	DWG. NO.	22700	

Section 8 - Reference

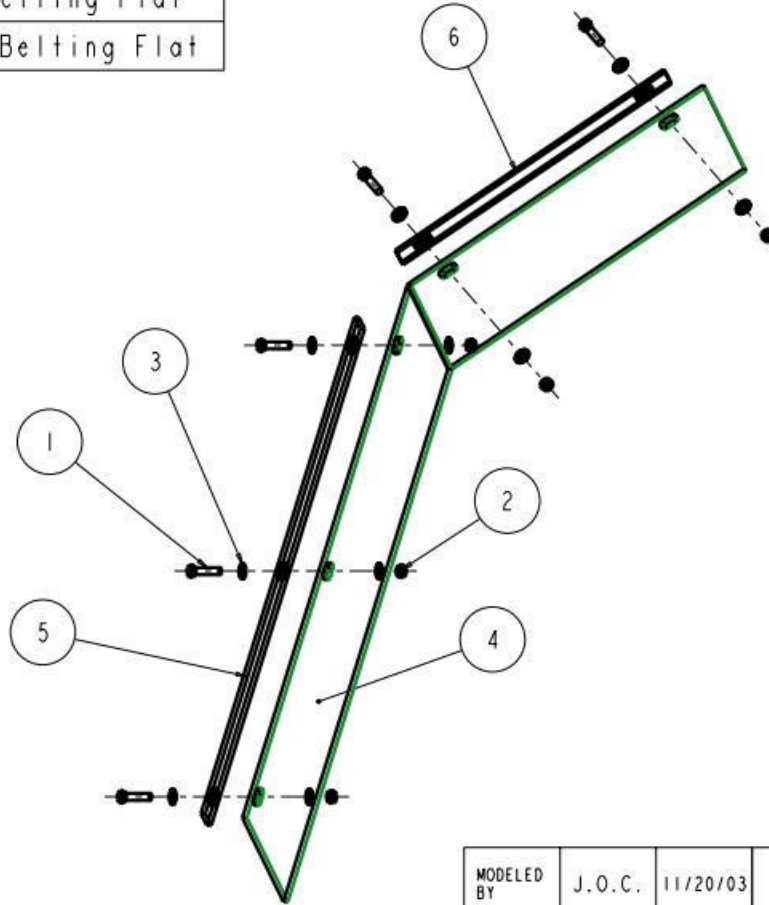
Part Number 23443
DB4048 Blade Holder

ITEM NO.	PART NUMBER	QTY REQD.	NOMENCLATURE OR DESCRIPTION
1	10311	2	BLADE BOLT NUT GR.8
2	10312	2	BLADE BOLT LOCKWASHER GR.8
3	10313	2	BLADE BOLT GR.8
4	10357	2	NON-DIRECTIONAL BLADE
5	26949	1	BLADE HOLDER WELDMENT



Item	Part Number	Qty.	Description
1	10032	5	Hex Bolt 3/8 x 1-1/2 gr.5 plated
2	10175	5	3/8" Locknut (Gr.5 Plated)
3	10202	10	3/8" Flatwasher (Plated)
4	22708	1	DB4048 Rubber Belting
5	22709	1	DB4048 Long Rubber Belting Flat
6	22710	1	DB4048 Short Rubber Belting Flat

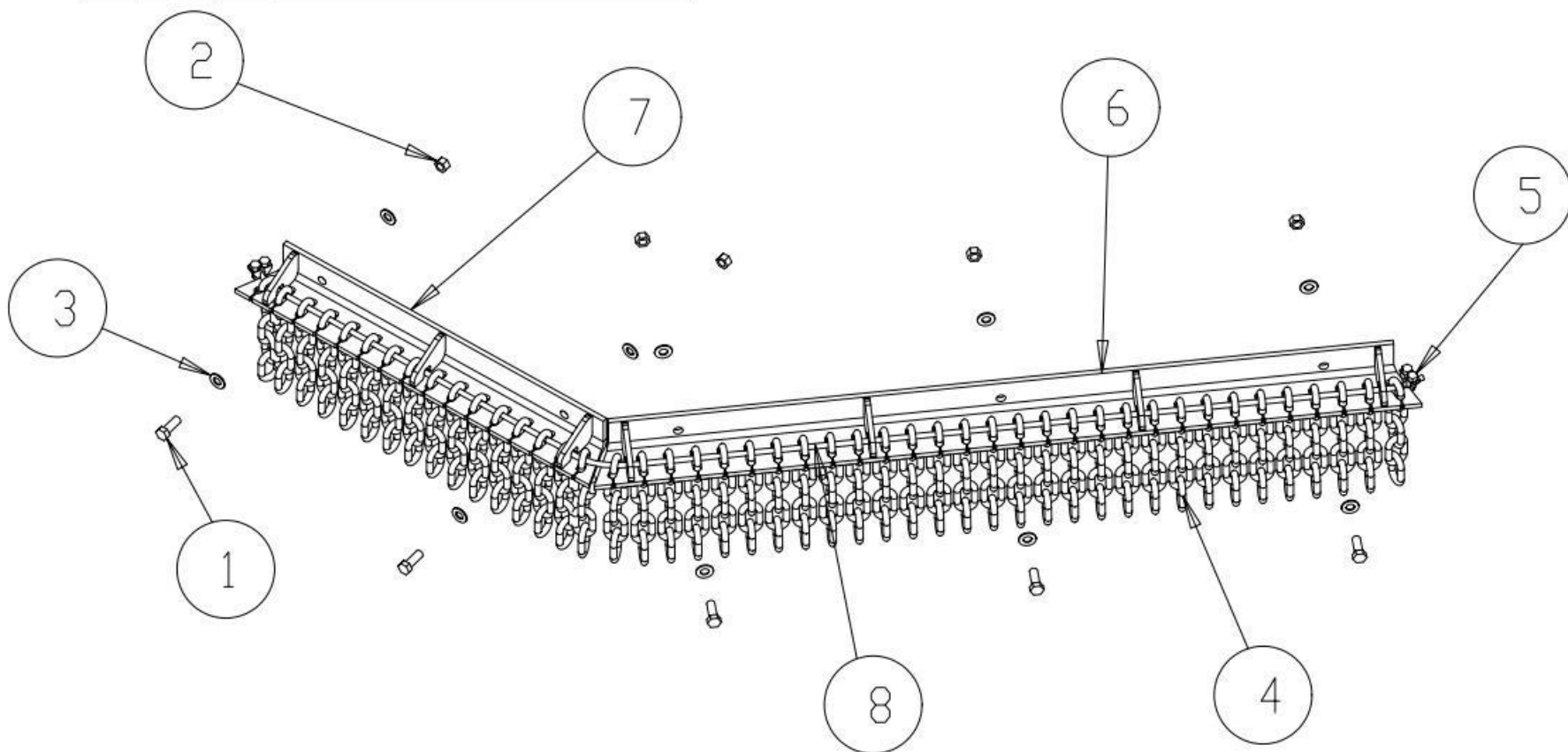
DWG. NO.	22707			REV.	IR
REV	CHANGE	BY	DATE	ECN	
IR	INITIAL RELEASE	J.O.C.	11/20/03	---	



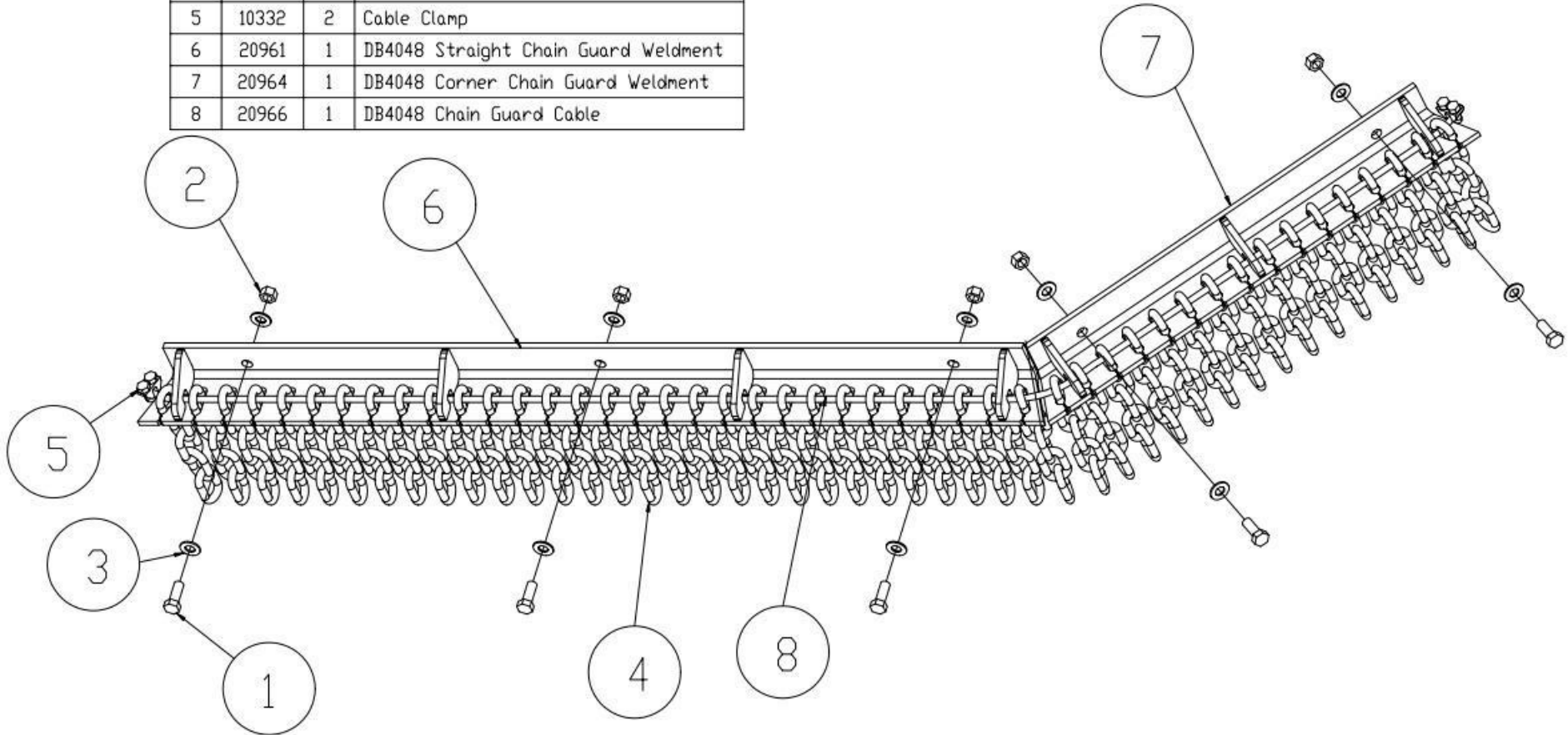
MODELED BY	J.O.C.	11/20/03	EVH MFG. CO. LORIS S.C.	
DRAWN BY	R.T.N.	01/07/04		
MATERIAL	R.M.N. N/A		DESCRIPTION	SHEET 1 of 1
MANUFACTURED BY: EVH MFG CO LLC			DB4048 Rubber Belting Kit	
DO NOT SCALE	A	DWG. NO.	22707	
	DWG SIZE			

All Dimensions in Inches Unless Otherwise Specified
 Dimensions in [] are in Millimeters
 Tolerance Unless Otherwise Specified
 Fractional Dimensions $\pm 1/16"$ Angular Dimensions $\pm 1^\circ$
 Decimal Dim. to Limits Shown All Holes to be $+0 -1/32"$

PARTS LISTING FOR DB4048 FRONT CHAIN GUARD (P/N 20960)			
Item	Part Number	Qty.	Description
1	10031	5	Hex Bolt 3/8 x 1 gr.5 plated
2	10175	5	3/8" Locknut (Gr.5 Plated)
3	10202	10	3/8" Flatwasher (Plated)
4	10317	46	5 Link Chain
5	10332	2	Cable Clamp
6	20961	1	DB4048 Straight Chain Guard Weldment
7	20964	1	DB4048 Corner Chain Guard Weldment
8	20966	1	DB4048 Chain Guard Cable

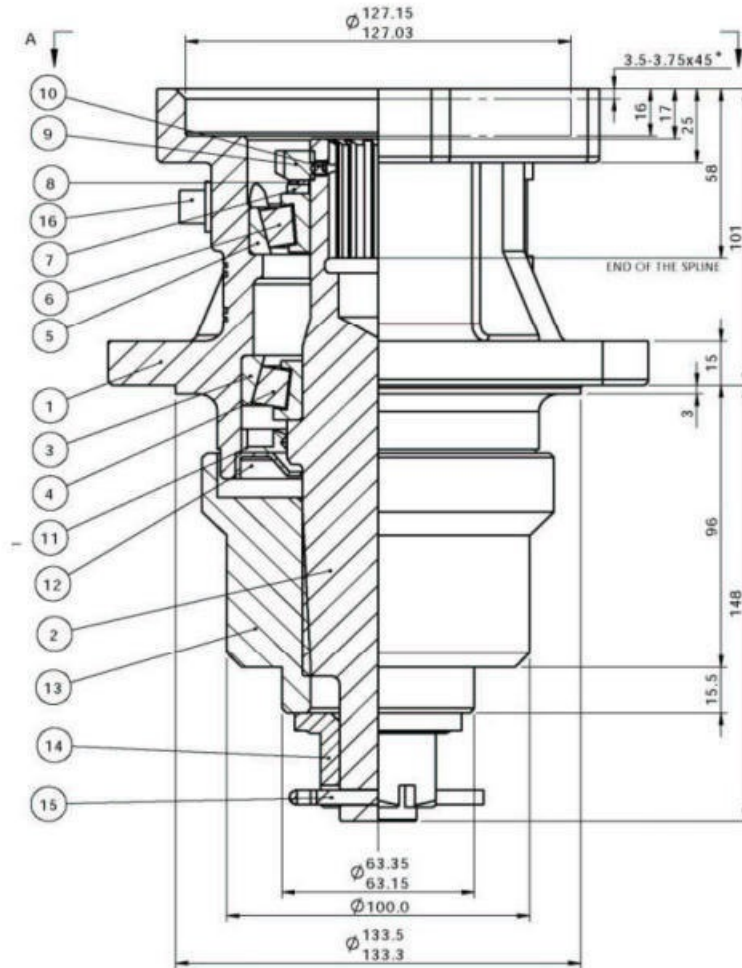


PARTS LISTING FOR DB4048 REAR CHAIN GUARD (P/N 20967)			
Item	Part Number	Qty.	Description
1	10031	5	Hex Bolt 3/8 x 1 gr.5 plated
2	10175	5	3/8" Locknut (Gr.5 Plated)
3	10202	10	3/8" Flatwasher (Plated)
4	10317	46	5 Link Chain
5	10332	2	Cable Clamp
6	20961	1	DB4048 Straight Chain Guard Weldment
7	20964	1	DB4048 Corner Chain Guard Weldment
8	20966	1	DB4048 Chain Guard Cable



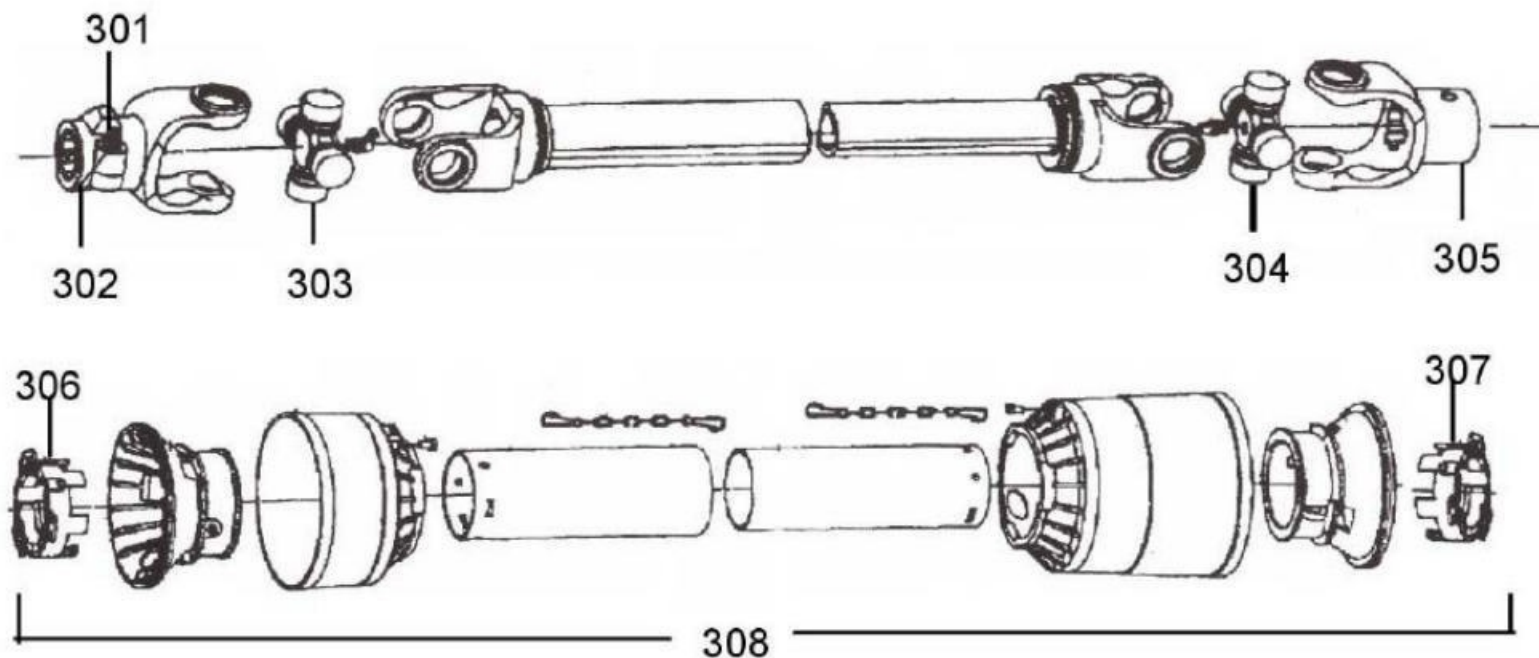
EVH P/N 16577

Hydraulic Motor Housing
For
DB-4048 AND DB-4060



<u>Key #</u>	<u>Part No.</u>	<u>Description</u>	<u>Key #</u>	<u>Part No.</u>	<u>Description</u>
1	N/A	Housing	9	16484	Locknut
2	N/A	Shaft	10	16480	Set Screw
3	15777	Cup	11	16479	Lip Seal-Output
4	15778	Bearing	12	16483	Seal Protector
5	15779	Cup	13	16472	Blade Hub
6	15780	Bearing	14	10173	Nut, Hex Slotted
7	15782	Washer w/tang	15	10243	Cotter Pin
8	15783	Lockwasher	16	15784	Plug, Pipe

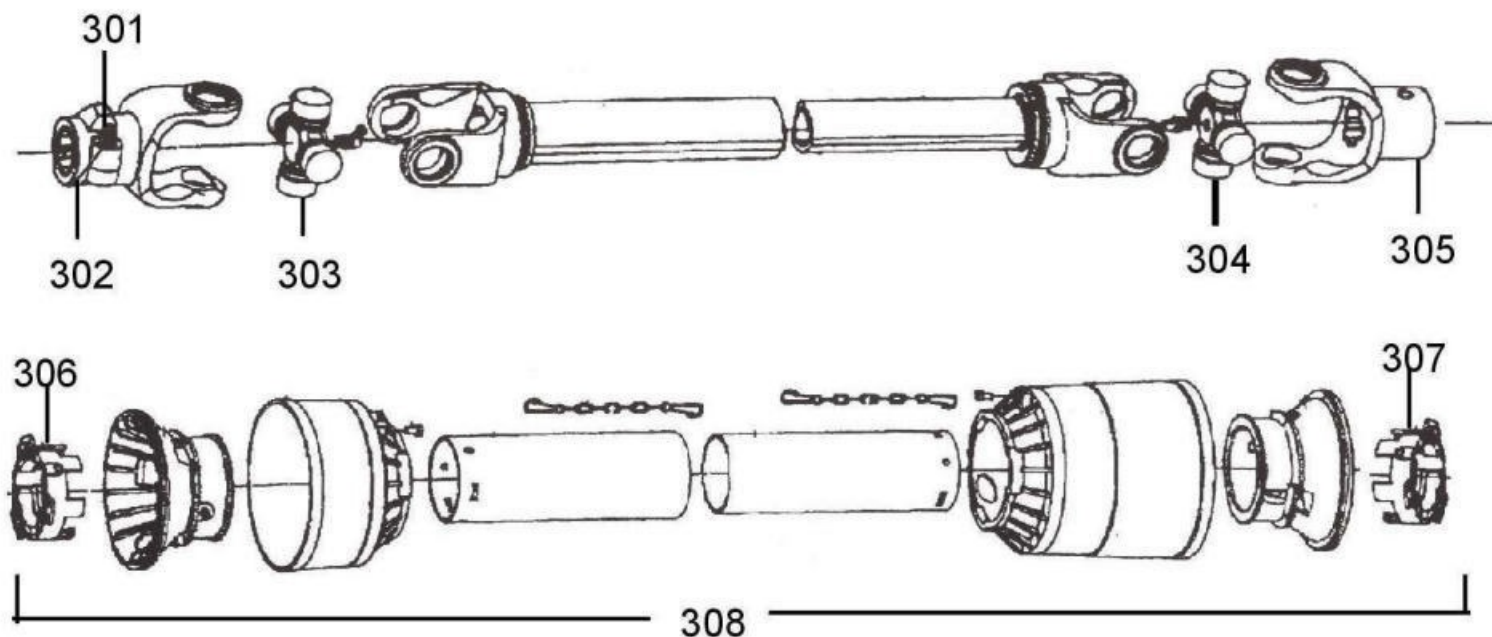
10601 Driveshaft



Key #	Part No.	Description	Key #	Part No.	Description
301	15579	Push Pin complete	305	16521	Yoke, Imp end
302	11436	Yoke, Tractor end	306	15804	Shield bearing
303	11437	Cross Kit	307	15805	Shield Bearing
304	11437	Cross Kit	308	11448	Shield kit complete

11716 Driveshaft

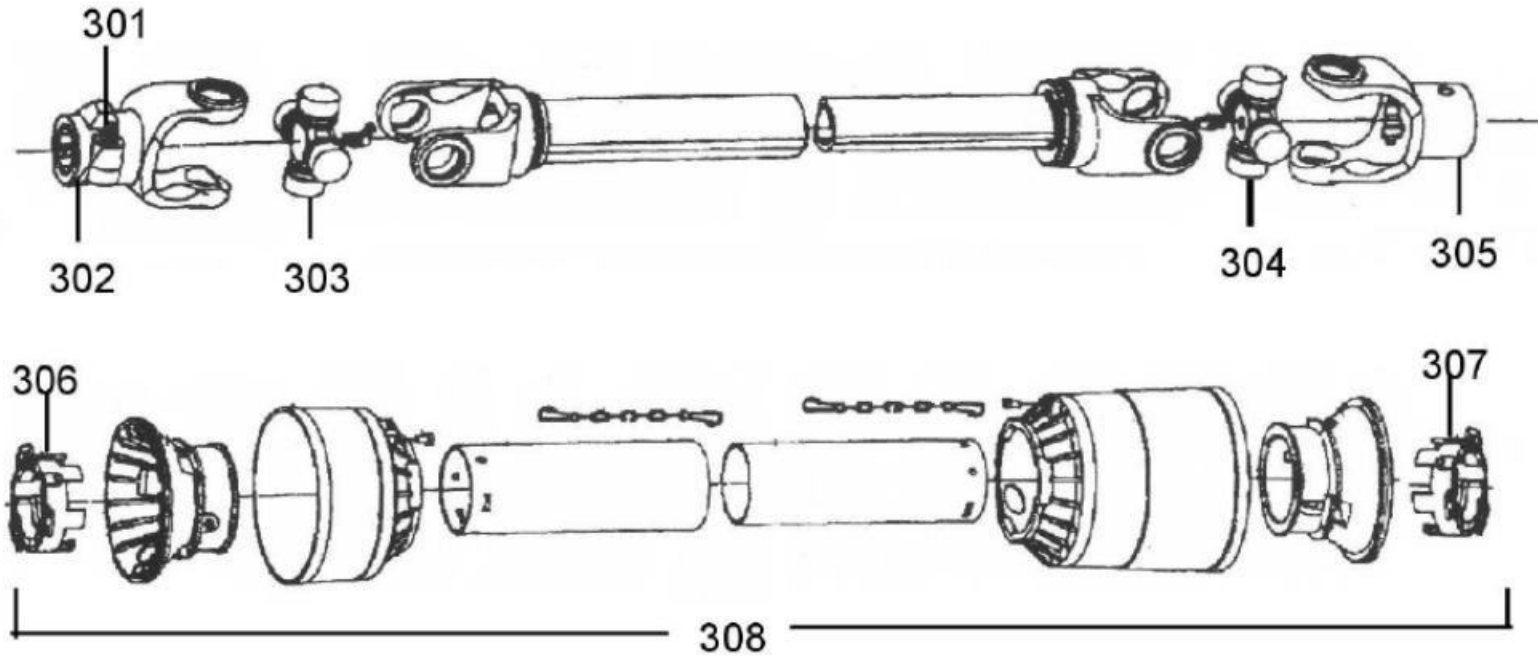
(1 3/4 20spline tractor end & 1 3/8 21spline Imp. end)



Key #	Part No.	Description	Key #	Part No.	Description
301	16857	Push pin complete	305	15807	1 3/8 21 spline yoke w/swell pin cat5
302	11855	1 3/4 20 spline yoke tractor end	306	15809	Shield bearing
303	15629	Cross kit	307	15810	Shield bearing
304	15629	Cross kit	308	15811	Shield kit complete

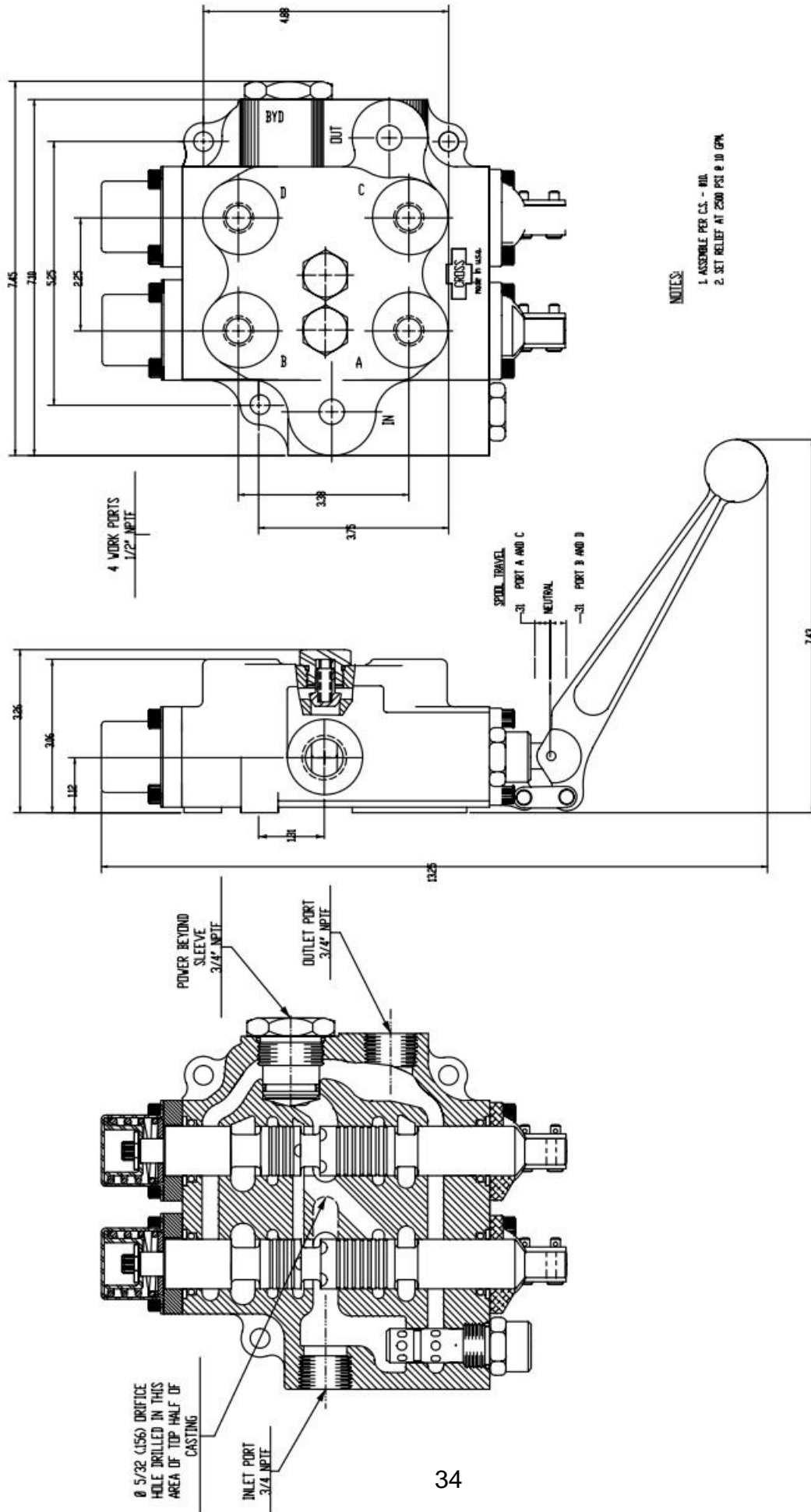
11717 Driveshaft

(1 3/8 - 21 Spline Yoke Both Ends)



Key #	Part #	Description	Key #	Part #	Description
301	15579	Push Pin complete	305	16708	1 3/8 21 yoke w/ swell pin cat 4
302	15900	1 3/8 21 spline yoke tractor end		16765	Swell Pin Kit For 16708
303	11437	Cross Kit	306	15804	Shield bearing
304	11437	Cross Kit	307	15805	Shield Bearing
			308	11448	Shield kit complete

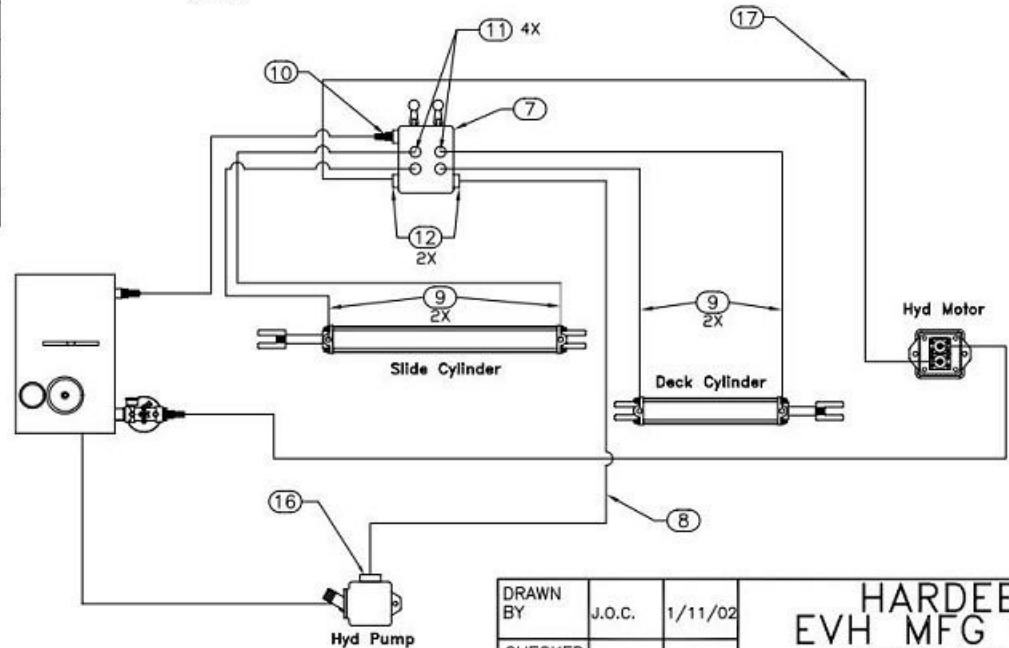
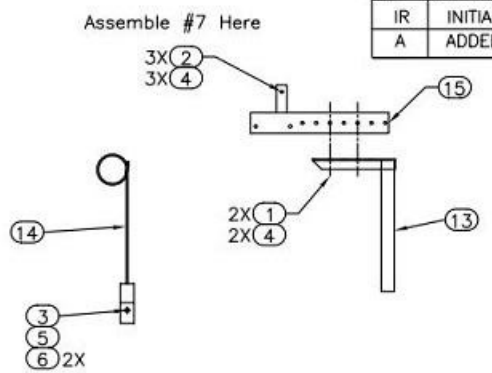
Section 8 - Reference



HARDEE BY EVH, MFG. CO.
 MODELS DB-4048 & DB-4060
 DUAL SPOOL CONTROL VALVE
 EVH No. 10374

ITEM NO.	PART NUMBER	QTY REQD.	NOMENCLATURE OR DESCRIPTION
1	10031	2	HEX BOLT (3/8" X 1")
2	10033	3	HEX BOLT (3/8" X 2")
3	10079	1	HEX BOLT (1/2" X 5")
4	10175	5	LOCK NUT (3/8")
5	10176	1	LOCK NUT (1/2")
6	10204	2	FLAT WASHER (1/2")
7	10374	1	DUAL SPOOL CONTROL VALVE
8	10379	1	3/4" HYDRAULIC HOSE X 72"
9	10382	4	3/8" X 104" PRESSURE HOSE
10	13557	1	3/4"-M-NPT X 3/4" HOSE BARB
11	13905	4	6-M-JICX8-M-NPT ELBOW
12	13976	2	12-M-JICX12-M-NPT 90 DEG. ELBOW
13	23078	1	CONTROL STAND MOUNTING BRACKET
14	23081	1	HOSE BRACKET WELDMENT
15	23087	1	CONTROL BRACKET WELDMENT
16	23136	1	PRESSURE FLANGE
17	11593	1	3/4" X 180" PRESSURE HOSE W/ 12-F-JIC

DWG. NO.		23162		REV.		A	
REV	CHANGE	BY	DATE	ECN			
IR	INITIAL RELEASE	J.O.C.	1/11/02	---			
A	ADDED 11593 (ITEM 17)	B.C	1/2/07				



Packaging instructions:

1. Package all components in a box for dealer installation.

Assembly instructions:

1. Part # 13 assembles in control stand on top of hitch frame.
2. Part # 14 bolts to hole in top of hitch frame to act as a hose guide.
3. Assemble all other parts as shown.

All Dimensions in Inches Unless Otherwise Specified	
Dimensions in [] are in Millimeters	
Tolerances Unless Otherwise Specified	
Fractional Dimensions ±1/16"	Angular Dimensions ±1°
Decimal Dim. to Limits Shown	All holes to be $\begin{matrix} +0 \\ -1/32 \end{matrix}$

DRAWN BY	J.O.C.	1/11/02	HARDEE EVH MFG CO. LORIS S.C.	
CHECKED BY				
MATERIAL	R.M.N. N/A		APPLICATION	OLD PART #
			DB Cutters	----
			DESCRIPTION	Hydraulic Conversion Kit (Converts SH into H)
DO NOT SCALE	A	DWG. NO.	23162	