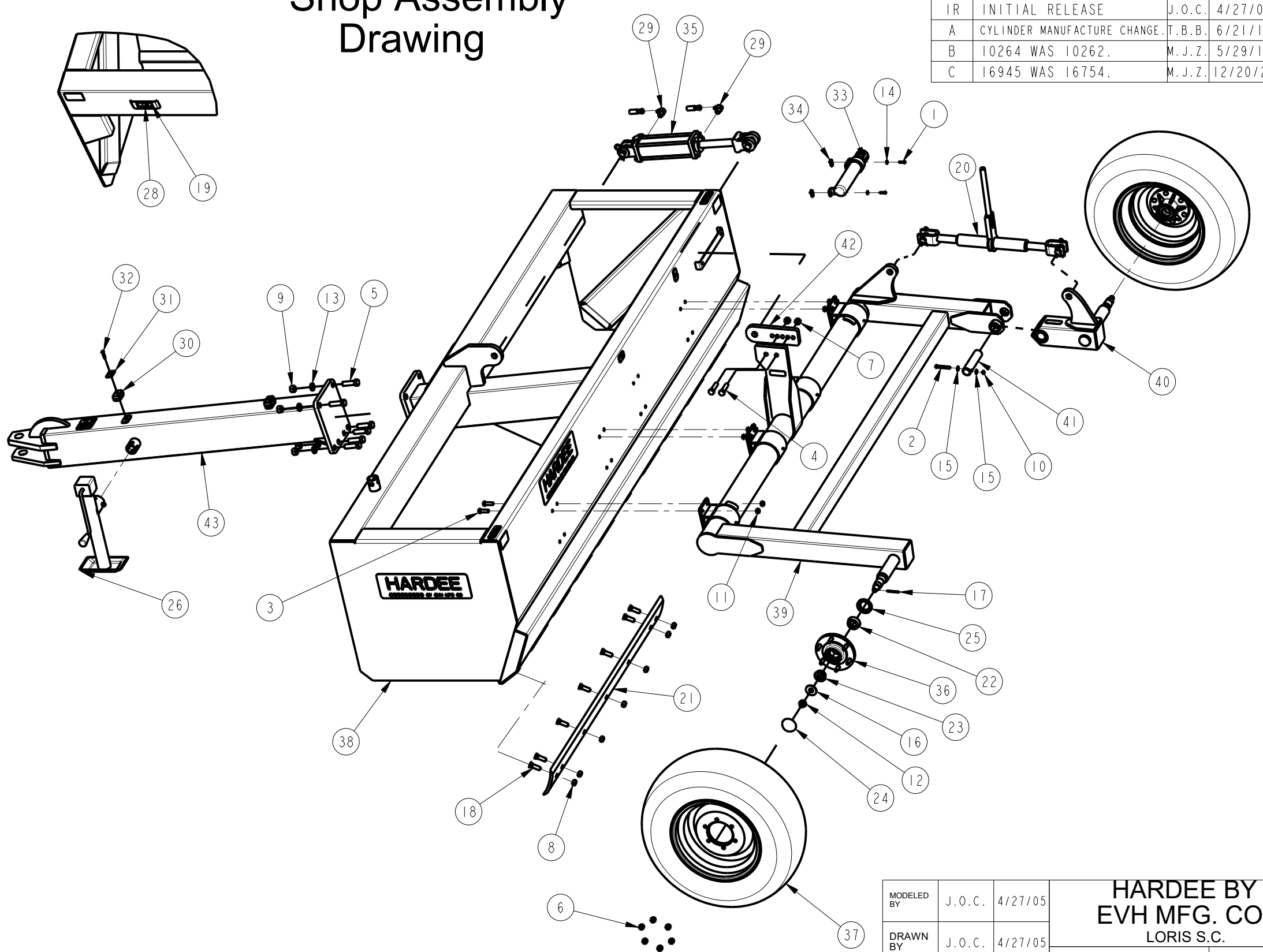


| Item | Part Number | Qty. | Description |
|------|-------------|------|---|
| 1 | 10002 | 2 | HEX BOLT, 1/4-20 X 1 Gr.5 PLATED |
| 2 | 10034 | 1 | HEX BOLT, 3/8" x 2-1/2" Gr.5 PLATED |
| 3 | 10072 | 16 | HEX BOLT, 1/2 x 1 1/2 Gr.5 PLATED |
| 4 | 10093 | 2 | HEX BOLT, 5/8" X 2-1/2" Gr.5 PLATED |
| 5 | 10112 | 6 | HEX BOLT, 3/4" X 2-1/2" Gr.5 PLATED |
| 6 | 10150 | 12 | LUG NUT (1/2" - 20 UNF) |
| 7 | 10156 | 2 | Nylon Lock Nut, 5/8" Plated |
| 8 | 10166 | 14 | LOCKNUT, 5/8"-11 PLATED |
| 9 | 10167 | 6 | HEX NUT, 3/4" (Gr.5 PLATED) |
| 10 | 10175 | 1 | LOCKNUT, 3/8"-16 Gr.5 PLATED |
| 11 | 10176 | 16 | LOCKNUT, 1/2" (Gr.5 PLATED) |
| 12 | 10179 | 2 | CASTLE NUT, 3/4" Gr.5 Fine Thread |
| 13 | 10186 | 6 | LOCK WASHER, 3/4" PLATED |
| 14 | 10200 | 2 | FLATWASHER, 1/4" PLATED |
| 15 | 10202 | 2 | FLATWASHER, 3/8" PLATED |
| 16 | 10206 | 2 | FLATWASHER, 3/4" PLATED |
| 17 | 10252 | 2 | COTTER PIN, 3/16" X 2" PLATED |
| 18 | 10264 | 14 | Plow Bolt 5/8 x 2 Gr.5 Plated |
| 19 | 10339 | 2 | POP RIVET |
| 20 | 10343 | 1 | RATCHET JACK |
| 21 | 10431 | 2 | BLADE, 60", CUTTING EDGE |
| 22 | 10437 | 2 | INNER BEARING |
| 23 | 10438 | 2 | OUTER BEARING |
| 24 | 10439 | 2 | DUST CAP |
| 25 | 10440 | 2 | GREASE SEAL |
| 26 | 10618 | 1 | JACK, 10" |
| 27 | 10924 | 2 | 3/8" X 163" HYD. HOSE (NOT SHOWN) |
| 28 | 11727 | 1 | SERIAL NUMBER PLATE |
| 29 | 13905 | 2 | ELBOW, 6-M-JIC X 8-M-NPT |
| 30 | 15291 | 2 | 5/8" Tube Clamp Set - Twin, Polypropylene |
| 31 | 15293 | 2 | COVER PLATE - Twin, Group 2 |
| 32 | 15294 | 2 | HEX BOLT, 5/16"-18 X 1-1/4" Gr.5 Plated |
| 33 | 15854 | 1 | MANUAL HOLDER CANISTER |
| 34 | 15860 | 2 | U-NUT, 1/4"-20 UNC |
| 35 | 16945 | 1 | CYLINDER, 3" X 8" |
| 36 | 25203 | 2 | WHEEL HUB W/ HARDWARE |
| 37 | 30324 | 2 | 11L X 15 Tire, Tube and Rim |
| 38 | 40410 | 1 | Frame Weldment, PTS 120 |
| 39 | 40433 | 1 | Tailwheel Frame Weldment |
| 40 | 40451 | 1 | TILT ARM WELDMENT |
| 41 | 40456 | 1 | Pin, Tilt Arm |
| 42 | 40457 | 1 | Cylinder Adjusting Bracket |
| 43 | 40458 | 1 | Tongue Weldment, Standard |
| 44 | 11636-5 | 1 | DANGER DECAL (KIT 11636) |

Shop Assembly Drawing



| | | | | | |
|----------|-----------------------------|--------|----------|------|---|
| DWG. NO. | 40400 | | | REV. | C |
| REV | CHANGE | BY | DATE | ECN | |
| IR | INITIAL RELEASE | J.O.C. | 4/27/05 | --- | |
| A | CYLINDER MANUFACTURE CHANGE | T.B.B. | 6/21/16 | 1655 | |
| B | 10264 WAS 10262. | M.J.Z. | 5/29/19 | 1747 | |
| C | 16945 WAS 16754. | M.J.Z. | 12/20/24 | 1789 | |

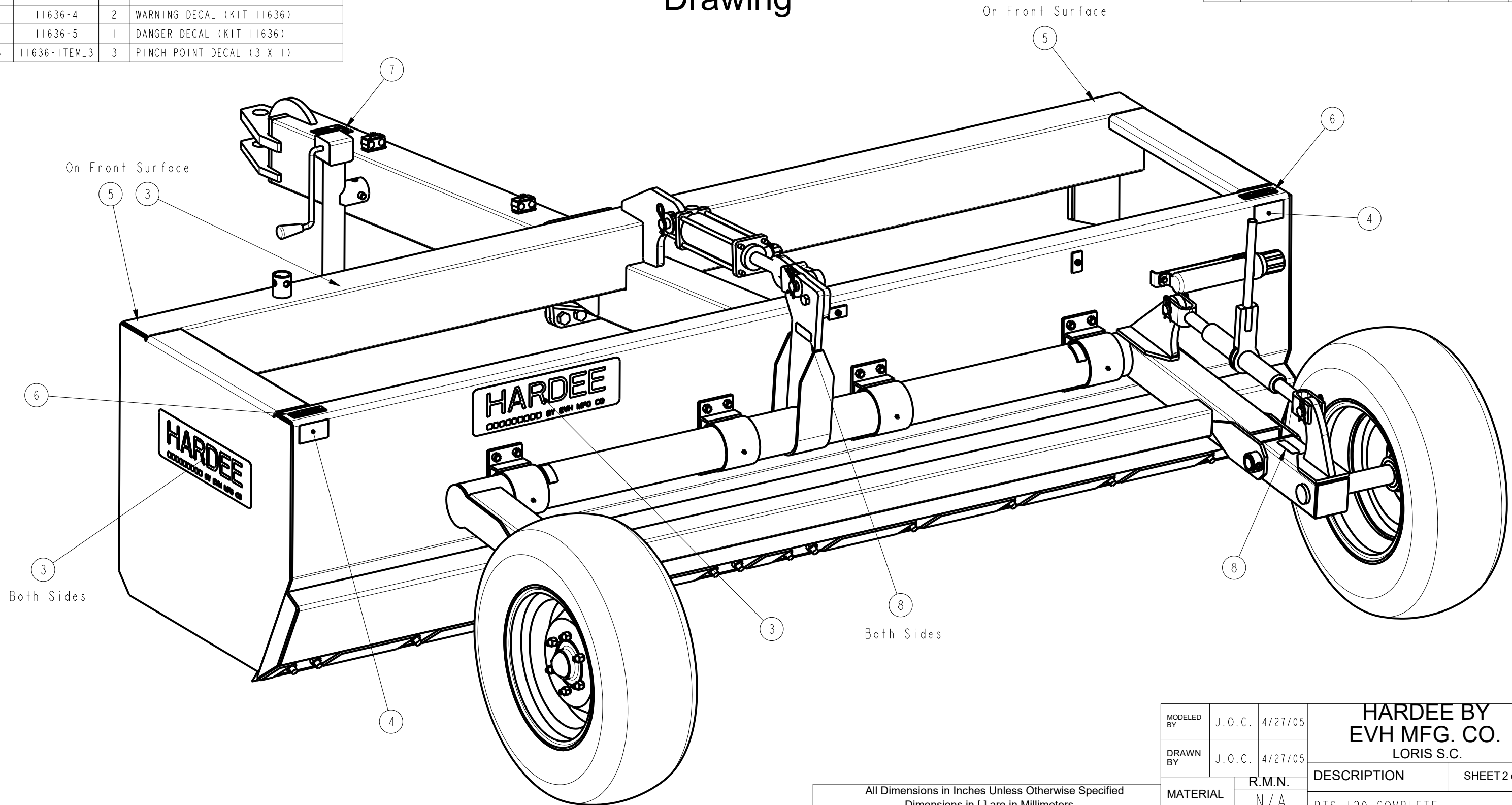
All Dimensions in Inches Unless Otherwise Specified
Dimensions in [] are in Millimeters
Tolerance Unless Otherwise Specified
Fractional Dimensions: 1/16"
Decimal Dim. to Limits Shown
Angular Dimensions: 1°
All Holes to be +0 -1/32"

| | | | | |
|---------------------------------------|--------|----------|--|--------------|
| MODELED BY | J.O.C. | 4/27/05 | HARDEE BY EVH MFG. CO. LORIS S.C. | |
| DRAWN BY | J.O.C. | 4/27/05 | | |
| MATERIAL | R.M.N. | N/A | DESCRIPTION | SHEET 1 of 3 |
| Manufactured By: EVH Mfg. Co., LLC | | | PTS 120 COMPLETE | |
| DO NOT SCALE | B | DWG. NO. | 40400 | |

| Item | Part Number | Qty. | Description |
|------|--------------|------|-----------------------------------|
| 1 | 10264 | 14 | Plow Bolt 5/8 x 2 Gr.5 Plated |
| 2 | 10343 | 1 | RATCHET JACK |
| 3 | 11131 | 4 | DECAL, HARDEE BY EVH MFG (5 X 16) |
| 4 | 15852 | 2 | RED REFLECTOR DECAL |
| 5 | 15853 | 2 | YELLOW REFLECTOR DECAL |
| 6 | 11636-4 | 2 | WARNING DECAL (KIT 11636) |
| 7 | 11636-5 | 1 | DANGER DECAL (KIT 11636) |
| 8 | 11636-ITEM_3 | 3 | PINCH POINT DECAL (3 X 1) |

| | | | | | |
|----------|------------------------------|--------|----------|------|---|
| DWG. NO. | 40400 | | | REV. | C |
| REV | CHANGE | BY | DATE | ECN | |
| IR | INITIAL RELEASE | J.O.C. | 4/27/05 | --- | |
| A | CYLINDER MANUFACTURE CHANGE | T.B.B. | 6/21/16 | 1655 | |
| B | CHANGES ARE ON SHEETS 1 & 3. | M.J.Z. | 5/29/19 | 1747 | |
| C | CHANGES ARE ON SHEETS 1 & 3. | M.J.Z. | 12/20/24 | 1789 | |

Decal Placement Drawing

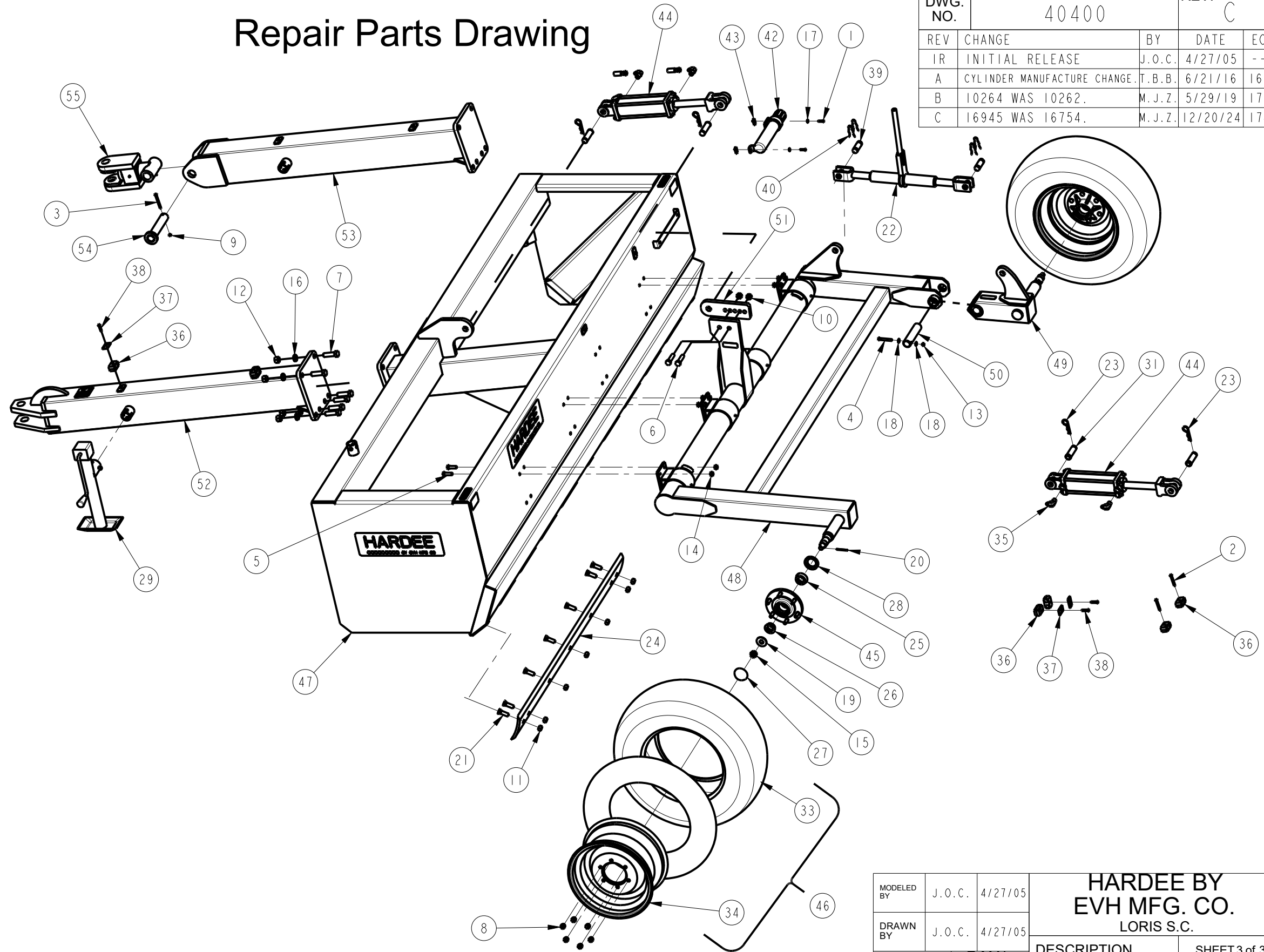


All Dimensions in Inches Unless Otherwise Specified
 Dimensions in [] are in Millimeters
 Tolerance Unless Otherwise Specified
 Fractional Dimensions: 1/16" Angular Dimensions: 1°
 Decimal Dim. to Limits Shown All Holes to be +0 -1/32"

| | | | | |
|---------------------------------------|--------|----------|--|--------------|
| MODELED BY | J.O.C. | 4/27/05 | HARDEE BY EVH MFG. CO. LORIS S.C. | |
| DRAWN BY | J.O.C. | 4/27/05 | | |
| MATERIAL | R.M.N. | N/A | DESCRIPTION | SHEET 2 of 3 |
| Manufactured By: EVH Mfg. Co., LLC | | | PTS 120 COMPLETE | |
| DO NOT SCALE | B | DWG. NO. | 40400 | |

| Item | Part Number | Qty. | Description |
|------|-------------|------|--|
| 1 | 10002 | 2 | HEX BOLT, 1/4-20 X 1 Gr.5 PLATED |
| 2 | 10014 | 2 | HEX BOLT, 5/16" X 2-1/4" Gr.5 PLATED |
| 3 | 10021 | 1 | HEX BOLT, 5/16" X 3" Gr.5 PLATED |
| 4 | 10034 | 1 | HEX BOLT, 3/8" X 2-1/2" Gr.5 PLATED |
| 5 | 10072 | 16 | HEX BOLT, 1/2 X 1 1/2 Gr.5 PLATED |
| 6 | 10093 | 2 | HEX BOLT, 5/8" X 2-1/2" Gr.5 PLATED |
| 7 | 10112 | 6 | HEX BOLT, 3/4" X 2-1/2" Gr.5 PLATED |
| 8 | 10150 | 12 | LUG NUT (1/2" - 20 UNF) |
| 9 | 10154 | 1 | LOCKNUT, 5/16"-18 PLATED |
| 10 | 10156 | 2 | Nylon Lock Nut, 5/8" Plated |
| 11 | 10166 | 14 | LOCKNUT, 5/8"-11 PLATED |
| 12 | 10167 | 6 | HEX NUT, 3/4" (Gr.5 PLATED) |
| 13 | 10175 | 1 | LOCKNUT, 3/8"-16 Gr.5 PLATED |
| 14 | 10176 | 16 | LOCKNUT, 1/2" (Gr.5 PLATED) |
| 15 | 10179 | 2 | CASTLE NUT, 3/4" Gr.5 Fine Thread |
| 16 | 10186 | 6 | LOCK WASHER, 3/4" PLATED |
| 17 | 10200 | 2 | FLATWASHER, 1/4" PLATED |
| 18 | 10202 | 2 | FLATWASHER, 3/8" PLATED |
| 19 | 10206 | 2 | FLATWASHER, 3/4" PLATED |
| 20 | 10252 | 2 | COTTER PIN, 3/16" X 2" PLATED |
| 21 | 10264 | 14 | Plow Bolt 5/8 x 2 Gr.5 Plated |
| 22 | 10343 | 1 | RATCHET JACK |
| 23 | 10391 | 4 | CLIP PIN (Hairpin) 3/16 X 3-1/4" |
| 24 | 10431 | 2 | BLADE, 60", CUTTING EDGE |
| 25 | 10437 | 2 | INNER BEARING |
| 26 | 10438 | 2 | OUTER BEARING |
| 27 | 10439 | 2 | DUST CAP |
| 28 | 10440 | 2 | GREASE SEAL |
| 29 | 10618 | 1 | JACK, 10" |
| 30 | 10924 | 2 | 3/8" X 163" HYD. HOSE (NOT SHOWN) |
| 31 | 10927 | 4 | 1" X 3" Cylinder Pin |
| 32 | 11842 | 2 | Tube for 9.5L x 15 Tire |
| 33 | 11843 | 2 | 11L X 15 TIRE |
| 34 | 13277 | 2 | Wheel, 15" x 8", 6 Lug |
| 35 | 13905 | 4 | ELBOW, 6-M-JIC X 8-M-NPT |
| 36 | 15291 | 6 | 5/8" Tube Clamp Set - Twin, Polypropylene |
| 37 | 15293 | 4 | COVER PLATE - Twin, Group 2 |
| 38 | 15294 | 4 | HEX BOLT, 5/16"-18 X 1-1/4" Gr.5 Plated |
| 39 | 15447 | 2 | 1" X 2-13/16" PIN |
| 40 | 15448 | 4 | Clip for 15447 Ratchet Jack Pin - INACTIVE |
| 41 | 15471 | 2 | 3/8" X 228" Hyd. Hose W/ 6-F-JIC X 8-M-NPT |
| 42 | 15854 | 1 | MANUAL HOLDER CANISTER |
| 43 | 15860 | 2 | U-NUT, 1/4"-20 UNC |
| 44 | 16945 | 2 | CYLINDER, 3" X 8" |
| 45 | 25203 | 2 | WHEEL HUB W/ HARDWARE |
| 46 | 30324 | 2 | 11L X 15 Tire, Tube and Rim |
| 47 | 40410 | 1 | Frame Weldment, PTS 120 |
| 48 | 40433 | 1 | Tailwheel Frame Weldment |
| 49 | 40451 | 1 | TILT ARM WELDMENT |
| 50 | 40456 | 1 | Pin, Tilt Arm |
| 51 | 40457 | 1 | Cylinder Adjusting Bracket |
| 52 | 40458 | 1 | Tongue Weldment, Standard |
| 53 | 40459 | 1 | Tongue Weldment, Swivel |
| 54 | 40468 | 1 | Pin Weldment, Swivel Hitch |
| 55 | 40472 | 1 | Swivel Hitch Weldment |

Repair Parts Drawing



| | | | | | |
|----------|-----------------------------|--------|----------|------|---|
| DWG. NO. | 40400 | | | REV. | C |
| REV | CHANGE | BY | DATE | ECN | |
| IR | INITIAL RELEASE | J.O.C. | 4/27/05 | --- | |
| A | CYLINDER MANUFACTURE CHANGE | T.B.B. | 6/21/16 | 1655 | |
| B | 10264 WAS 10262. | M.J.Z. | 5/29/19 | 1747 | |
| C | 16945 WAS 16754. | M.J.Z. | 12/20/24 | 1789 | |

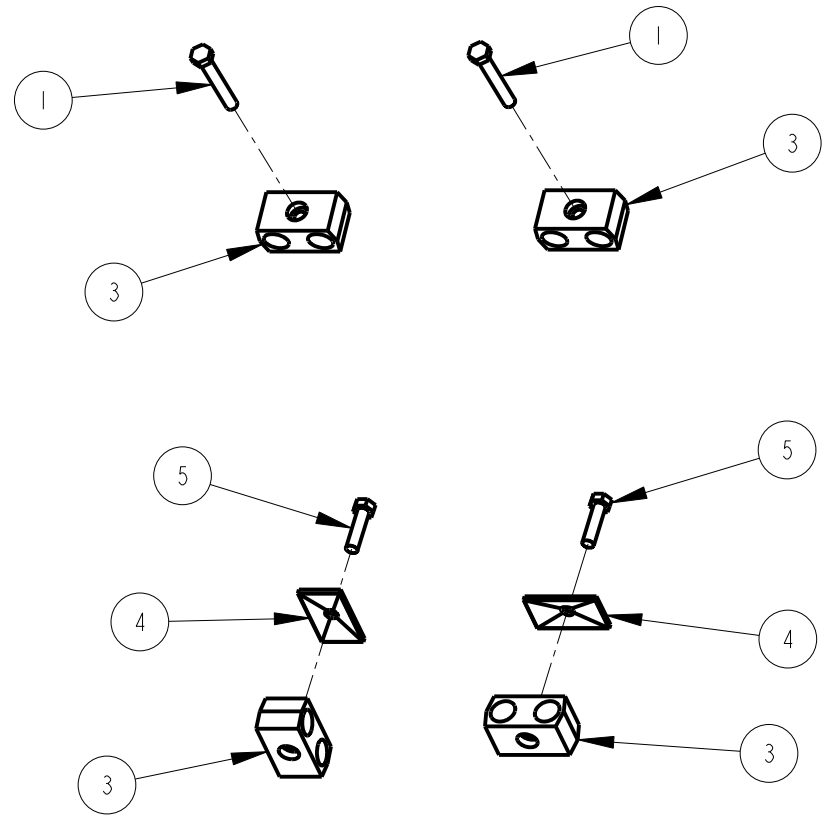
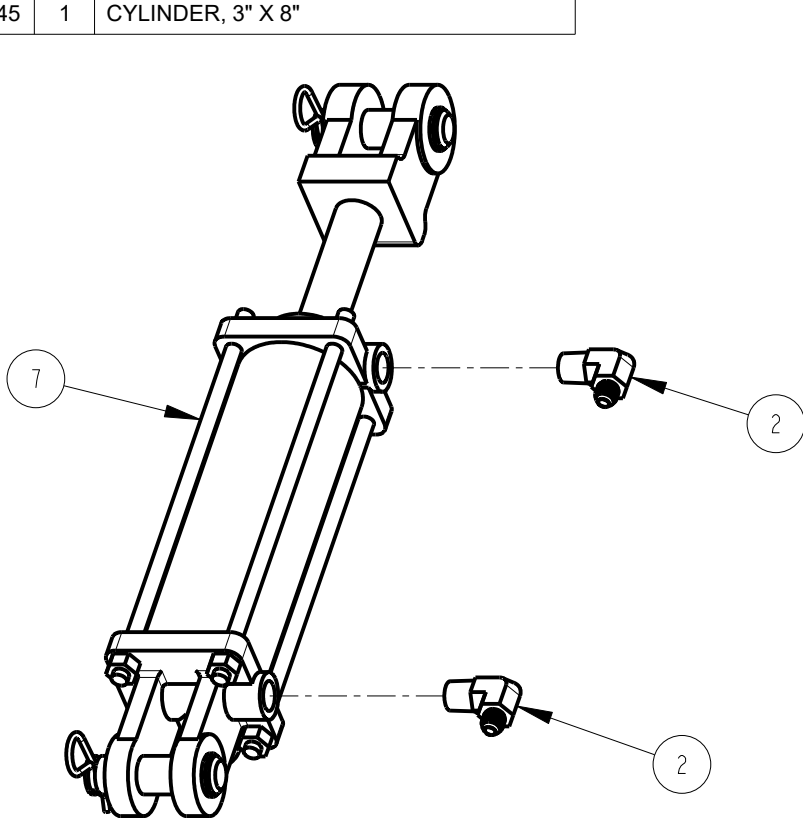
All Dimensions in Inches Unless Otherwise Specified
 Dimensions in [] are in Millimeters
 Tolerance Unless Otherwise Specified
 Fractional Dimensions: 1/16"
 Decimal Dim. to Limits Shown
 Angular Dimensions: 1°
 All Holes to be +0 -1/32"

Drafting Note:
 Ballons 29 & 46 Are Created Objects.

| | | | | |
|---------------------------------------|---------------|----------|--|--------------|
| MODELED BY | J.O.C. | 4/27/05 | HARDEE BY EVH MFG. CO. LORIS S.C. | |
| DRAWN BY | J.O.C. | 4/27/05 | | |
| MATERIAL | R.M.N. | N/A | DESCRIPTION | SHEET 3 of 3 |
| Manufactured By: EVH Mfg. Co., LLC | | | PTS 120 COMPLETE | |
| DO NOT SCALE | B DWG SIZE | DWG. NO. | 40400 | |

| Item | Part Number | Qty. | Description |
|------|-------------|------|--|
| 1 | 10014 | 2 | HEX BOLT, 5/16" X 2-1/4" Gr.5 Plated |
| 2 | 13905 | 2 | ELBOW, 6-M-JIC X 8-M-NPT |
| 3 | 15291 | 4 | 5/8" Tube Clamp Set - Twin, Polypropylene |
| 4 | 15293 | 2 | COVER PLATE - Twin, Group 2 |
| 5 | 15294 | 2 | HEX BOLT, 5/16"-18 X 1-1/4" Gr.5 Plated |
| 6 | 15471 | 2 | 3/8" X 228" Hyd. Hose W/ 6-F-JIC X 8-M-NPT |
| 7 | 16945 | 1 | CYLINDER, 3" X 8" |

| | | | | | |
|----------|-----------------------------|--------|----------|------|---|
| DWG. NO. | 40403 | | | REV. | B |
| REV | CHANGE | BY | DATE | ECN | |
| IR | INITIAL RELEASE | J.O.C. | 5/19/05 | --- | |
| A | CYLINDER MANUFACTURE CHANGE | T.B.B. | 6/21/16 | 1655 | |
| B | 16945 WAS 16754. | M.J.Z. | 12/20/24 | 1789 | |



All Dimensions in Inches Unless Otherwise Specified
 Dimensions in [] are in Millimeters
Tolerance Unless Otherwise Specified
 Fractional Dimensions $\pm 1/16"$ Angular Dimensions $\pm 1^\circ$
 Decimal Dim. to Limits Shown All Holes to be $+0 -1/32"$

| | | | | | |
|---------------------------------------|--------|-----------|--|--------------|--|
| MODELED BY | J.O.C. | 5/19/05 | HARDEE BY EVH MFG. CO. LORIS S.C. | | |
| CHECKED BY | J.O.C. | 5/19/05 | | | |
| MATERIAL | R.M.N. | N/A | DESCRIPTION | SHEET 1 of 1 | |
| Manufactured By: EVH Mfg. Co., LLC | | | TILT CYLINDER OPTION | | |
| DO NOT SCALE | A | DWG. NO. | 40403 | | |
| | | DWG. SIZE | | | |