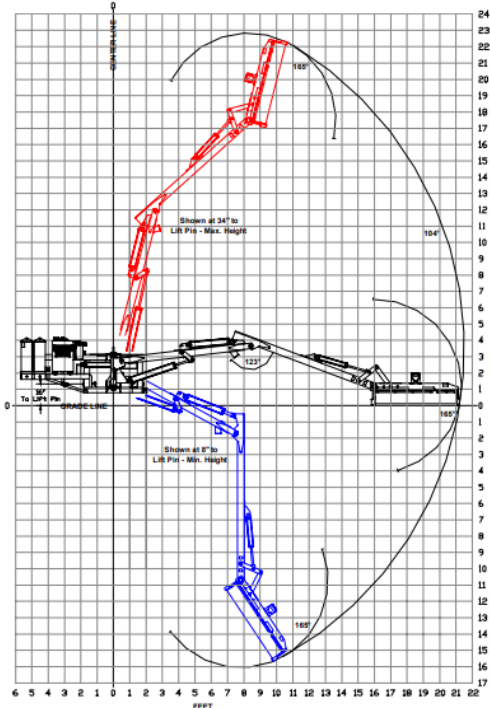


HYDRUALIC BOOM MOWER HR2360



The Hardee HR2360 has a rugged 23' reach with 60" cutting rotary head that has a "Self-Contained" hydraulic system, so that your tractor does not have to supply hydraulics. It comes standard with a Hydraulic Oil Cooler which allows operation at higher ambient temperatures as well as heavy-duty cutting. The HR2360 is designed for tractors weighing a minimum of 15,500 lbs.



| SPECIFICATIONS | |
|---------------------------|-----------------|
| NET WEIGHT | ~5,100lbs |
| CUTTER HEAD ARC | 165° |
| BLADE TIP SPEED | 19,000ft/min |
| HEAVY HEAT-TREATED BLADES | 6" X 5/8" X 15" |
| PTO OPERATING SPEED | 1,000rpm |
| DECK THICKNESS | 7 Gauge |
| OIL TYPE | HARDEE 403 |
| HYDRAULIC OIL CAPACITY | 55 Gallons |
| SYSTEM PRESSURE | 3,000psi |

- ### FEATURES
- 🦁 Shielded Drive Shaft
 - 🦁 Category III, 3-Point Mounting
 - 🦁 Tractor Requires Stable Ballast to handle 23' Boom
 - 🦁 Folds behind Tractor for Compact Transport
 - 🦁 Well Balanced Hitch Frame
 - 🦁 Convenient 4-Axis Joystick Control
 - 🦁 "FINE METERING" Proportional Control Valves
 - 🦁 Extended Life, High Efficiency Pump and Motor
 - 🦁 Replaceable 100 Micron Mesh Strainer & Spin-On Filter
 - 🦁 No-Drift Load Holding Valve
 - 🦁 Lubrication Wear Point Grease fittings
 - 🦁 Automatic Integrated, Vertical & Horizontal Hydraulic Breakaway