

OFFSET ROTARY MOWER (FRONT LOADER) BRUSH TIGER

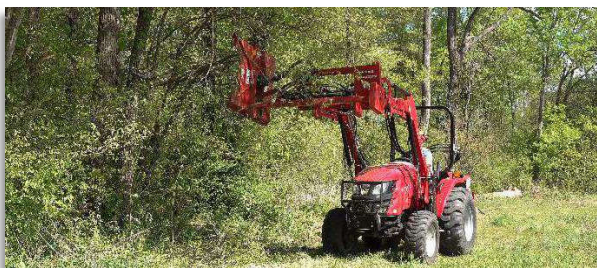


HARDEE
BY EVH MFG CO



The Hardee Brush Tiger is an offset rotary mower designed for compact tractors with 22-34 HP. Operator has full control from the driver's seat for mowing ditches, banks and trimming brush. It is "quick hitch" compatible for easy attachment and dismount. All hoses are equipped with quick connector attachments for easy installation. The cutter head hydraulics on this machine are self-contained, and powered by the PTO pump. The mower head moves hydraulically up and down. It requires 1 remote outlet for cylinder operation. The Brush Tiger can cut limbs up to 1.5" in thickness.

SPECIFICATIONS	
CUTTING WIDTH	35"
BLADE TIP SPEED	~18,000fpm
BLADE SIZE	2-1/2" X 13-1/8"
NET WEIGHT	725lbs
TRACTOR PTO	540rpm
SYSTEM WORK PRESSURE	2,500psi
DECK THICKNESS	10 Gauge



HARDEE
BY EVH MFG CO

*Please contact local dealer for more information.

4895 Red Bluff Rd., Loris, SC 29569 | Phone: (843) 756-2555 | Hardeebyevh.com