

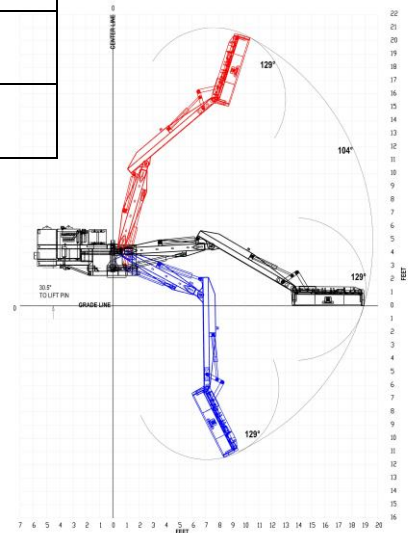
COMMERCIAL BOOM MOWER CM2160



Hardee CM2160 has a rugged Commercial Hydraulic Boom with a 21' reach. This mower is designed for tractors with minimum of 150 HP and 15,500 LBS, 2,950 PSI relief pressure hydraulic system, stable ballast and 4 sets of remotes (8 hydraulic ports). The PTO operating speed of 750 to 1,000 RPM with a choice of 1 $\frac{3}{8}$ " or 1 $\frac{1}{2}$ " shielded driveshaft option. It is equipped with a Cat. III, 3-Point Mounting Hitch. "Quick Hitch" ready and it folds behind tractor for compact transport. Features an automatic horizontal and a mechanical vertical breakaway. All wear points have grease fittings and all cylinders are welded so there are no Tie-Rods. The replaceable 100-Micron mesh strainer and spin on filter is a convenient feature as well as the combination of hydraulic steel tubing and hoses for better cooling characteristics. The CM2160 has an extended life – high efficiency pump and motor. It weighs 5,650 lbs. It also has a hydraulic oil cooler with a 12V DC fan. This machine is a "must-have" for all your commercial needs.

| SPECIFICATIONS | |
|---------------------------|-----------------|
| CUTTING WIDTH | 60" |
| BLADE TIP SPEED | 19,000ft/min |
| HEAVY HEAT-TREATED BLADES | 6" X 5/8" X 12" |
| HEAVY DUTY 7 GAUGE DECK | 12" Deep |
| OIL CAPACITY | 55 Gallons |
| OIL TYPE | Hardee 403 |
| SYSTEM WORK PRESSURE | 2,950psi |

| Available Options |
|--------------------|
| FRONT CHAIN GUARDS |
| REAR CHAIN GUARDS |



*Please contact local dealer for more information.

4895 Red Bluff Rd., Loris, SC 29569 | Phone: (843) 756-2555 | Hardeebyevh.com